

# Census Update

Jamey Christy  
Regional Director



# Overview

- Census Coverage Measurement
- 2010 Census Products and Special Tabulations
- Regional Office Restructuring
- 2020 Planning

# Census Coverage Measurement

Results Released May 22, 2012

# Census Count of the CCM Household Population

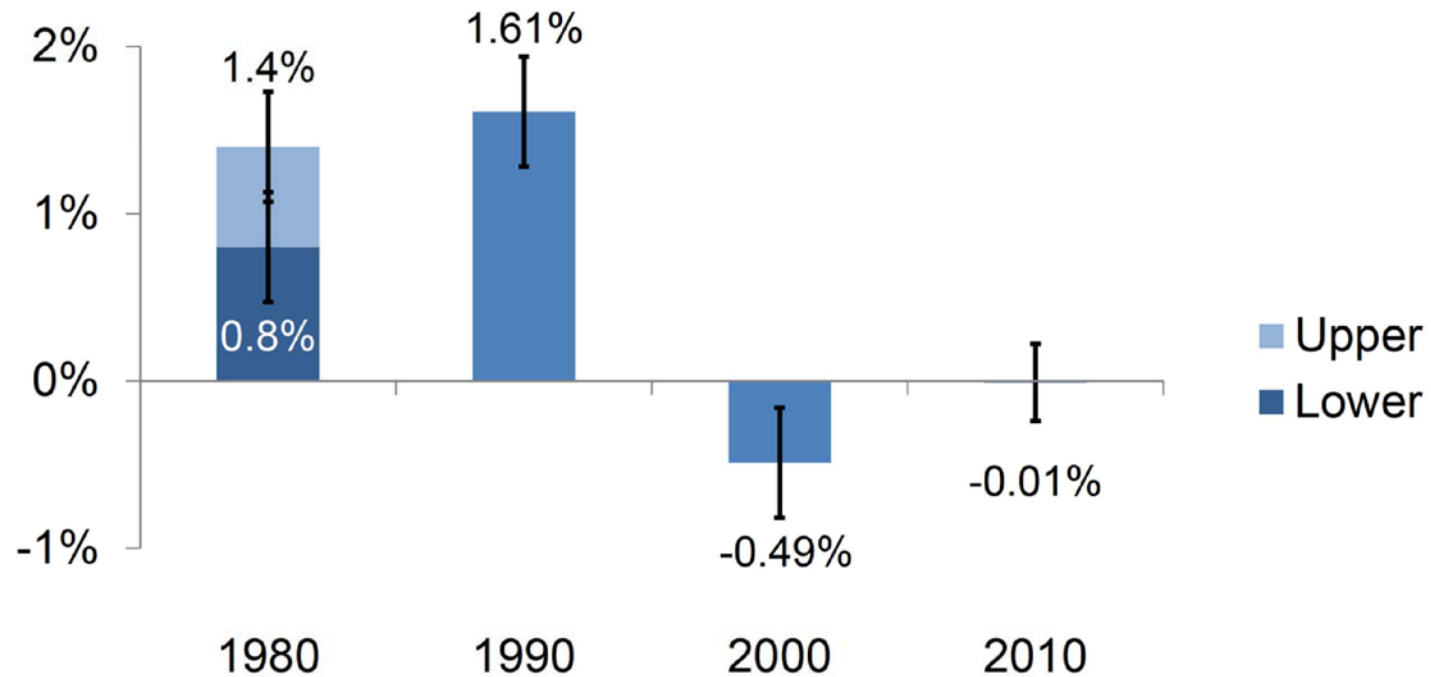
|                   |             |
|-------------------|-------------|
| 2010 Census Count | 308,745,538 |
|-------------------|-------------|

|                             |           |
|-----------------------------|-----------|
| Group Quarters Population - | 7,987,323 |
|-----------------------------|-----------|

|               |          |
|---------------|----------|
| Remote Alaska | - 54,777 |
|---------------|----------|

|   |             |
|---|-------------|
| Census Count of<br>CCM Household Population | 300,703,438 |
|---|-------------|

## U.S. Total Percentage Net Undercount from 1980 - 2010



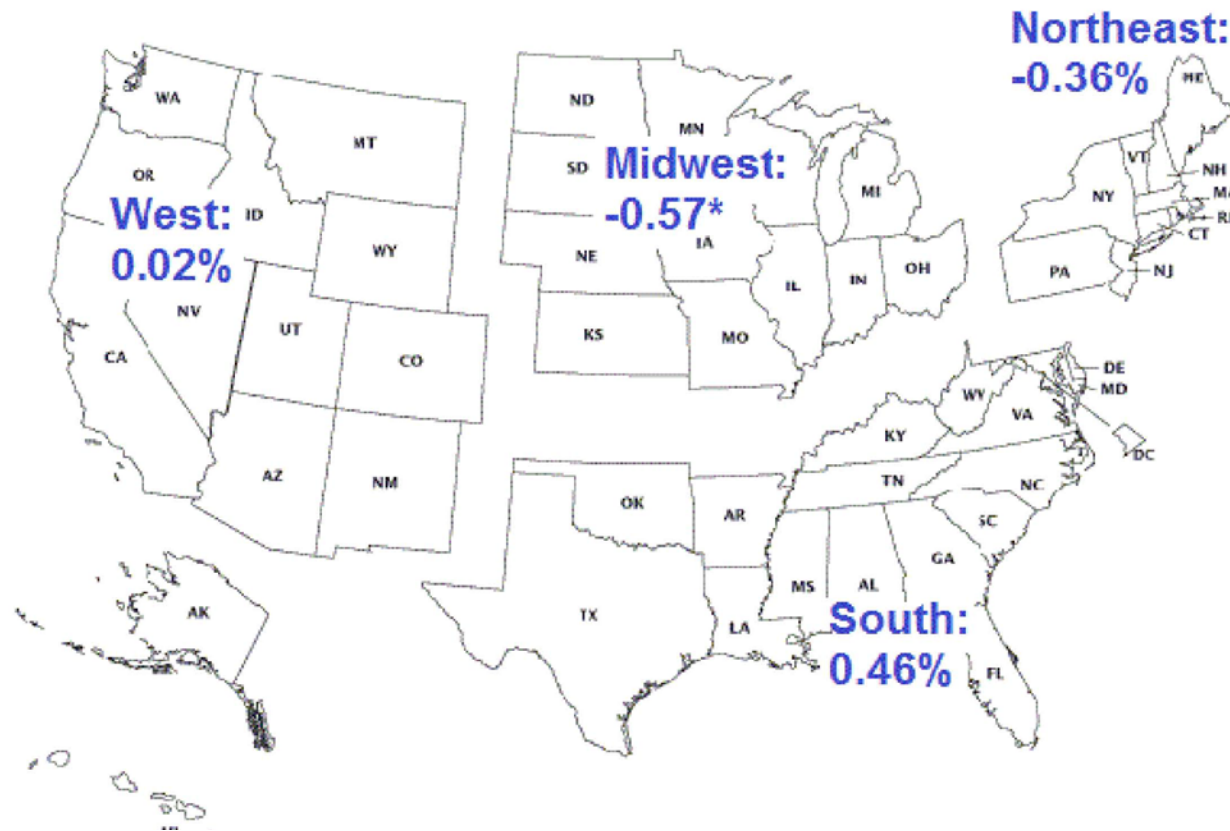
## Percentage Net Undercount by Race and Hispanic Origin

|                                     | 1990   | 2000   | 2010   |
|-------------------------------------|--------|--------|--------|
| Non-Hispanic White                  | 0.68*  | -1.13* | -0.84* |
| Non-Hispanic Black                  | 4.57*  | 1.84*  | 2.07*  |
| Non-Hispanic Asian                  | 2.36*  | -0.75  | 0.08   |
| American Indian on Reservation      | 12.22* | -0.88  | 4.88*  |
| American Indian off Reservation     | 0.68*  | 0.62   | -1.95  |
| Native Hawaiian or Pacific Islander | 2.36*  | 2.12   | 1.34   |
| Hispanic Origin                     | 4.99*  | 0.71   | 1.54*  |

## Percentage Net Undercount by Race and Hispanic Origin

|                                     | 1990   | 2000   | 2010   | Is there a significant difference from 2010? |      |
|-------------------------------------|--------|--------|--------|--|------|
|                                     |        |        |        | 1990   | 2000 |
| Non-Hispanic White                  | 0.68*  | -1.13* | -0.84* | Yes  |      |
| Non-Hispanic Black                  | 4.57*  | 1.84*  | 2.07*  | Yes  |      |
| Non-Hispanic Asian                  | 2.36*  | -0.75  | 0.08   |  |      |
| American Indian on Reservation      | 12.22* | -0.88  | 4.88*  |  | Yes  |
| American Indian off Reservation     | 0.68*  | 0.62   | -1.95  |  |      |
| Native Hawaiian or Pacific Islander | 2.36*  | 2.12   | 1.34   |  |      |
| Hispanic Origin                     | 4.99*  | 0.71   | 1.54*  | Yes  |      |

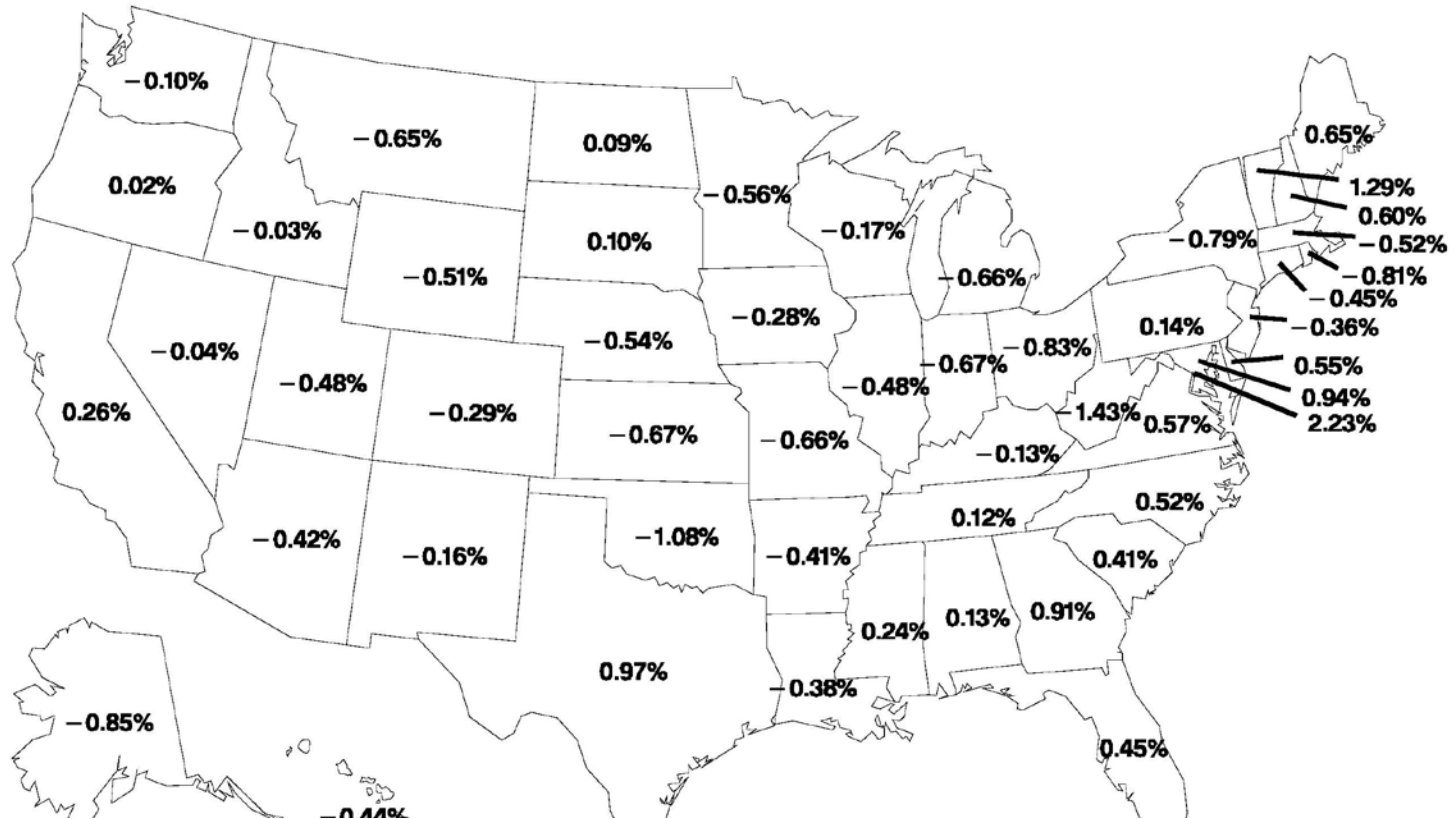
## Percentage Undercount for Persons by Region in 2010





# Percentage Net Undercount for Persons by State

No state or DC has a statistically significant undercount or overcount



# CCM for California

- Estimated Net Undercount:
  - 2010: 0.26% (0.76% RMSE)
  - 2000: 0.13% (0.26% SE)
- Well within margins of error – and therefore, not statistically significant
- Similar results for all reported Counties and Cities in California

# Released 2010 Census Products

- Redistricting Data
- Demographic Profile
- Summary File 1
- Advanced Group Quarters Summary File
- Same-Sex Couple Households Supplemental Tables
- Census Briefs

# Redistricting Data Summary File (P.L. 94-171)

- State and sub-state counts
  - Total population and population 18 years and over for 63 race groups and Hispanic or Latino origin
  - Total population and population 18 years and over for Not Hispanic or Latino origin by 63 race groups
  - Housing unit counts by occupancy status (occupied units and vacant units)
- Lowest Level of Geography: Block
- Media: AFF, FTP site, and DVD
- Released: February 3 – March 24, 2011

# National Summary File of Redistricting Data

- Same data tables as the state files
- Media: AFF and FTP site
- Released: April 14, 2011

# Demographic Profile

- Subjects:
  - Age
  - Sex
  - Race
  - Hispanic or Latino origin
  - Relationship to householder
  - Households
  - Group quarters population
  - Housing occupancy
  - Housing tenure
- Lowest Level of Geography: Initially Places/Functioning Minor Civil Divisions; update goes down to census tract
- Media: AFF (Summary File - FTP site)
- Released: May 5-26, 2011; updated August 25, 2011

# Summary File 1 – State

- Subjects:
  - Age
  - Sex
  - Race
  - Hispanic or Latino origin
  - Households
  - Families
  - Relationship to householder
  - Housing occupancy
  - Housing tenure (owner/renter)
  - Group quarters population
- Some tables are repeated for 9 race/Hispanic or Latino origin groups
  - White alone
  - Black or African American alone
  - American Indian and Alaska Native alone
  - Asian alone
  - Native Hawaiian and Other Pacific Islander alone
  - Some Other Race alone
  - Two or More Races
  - Hispanic or Latino
  - White alone, Not Hispanic or Latino
- Lowest Level of Geography: Block or census tract
- Media: AFF, FTP, and DVD (soon)
- Released: June 16, 2011 - August 25, 2011

# Summary File 1 – National

- Same data tables as state files
- Lowest Level of Geography: American Indian Areas
- Media: AFF, FTP, and DVD (soon)
- Released: October 27, 2011



# Summary File 1 Updates

- Summary File 1 Urban/Rural Update File
  - Urban/rural population and housing unit counts
  - Characteristics for urbanized areas and urban clusters
  - Lowest Level of Geography: Block
  - Media: AFF and FTP
  - Release: October 2012
- Summary File 1 Redefined Core Based Statistical Areas Update File
  - Same data tables as state files, but for redefined CBSAs as defined by Office of Management and Budget following the 2010 Census
  - Media: AFF and FTP
  - Release: August 2013

# Upcoming 2010 Census Releases

- Summary File 2
- Congressional and State Legislative District Summary Files
- American Indian and Alaska Native Summary File
- Public Use Microdata Sample File
- Printed Reports
- Census Briefs

# Summary File 2 – State

- Subjects:
  - Age
  - Sex
  - Households
  - Families
  - Relationship to householder
  - Housing occupancy
  - Housing tenure (owner/renter)
  - Group quarters population
- Lowest Level of Geography: Census tract
- Tables are repeated by:
  - Race groups
  - American Indian and Alaska Native (AIAN) tribes/tribal groupings
  - Hispanic or Latino origin groups
- Threshold -- All race and Hispanic groups, except AIAN tribes/tribal groups: **100 people in the U.S.**
- Threshold -- AIAN tribes/tribal groups: **7,000 people in the U.S.**
- Profile Table
- Media: AFF, FTP, and DVD (after national file is released)
- Release: December 2011 - April 2012

# Summary File 2 – National and Urban/Rural Update

- Summary File 2 National File
  - Same data tables as state files
  - Lowest Level of Geography: American Indian Areas and Core Based Statistical Areas (CBSAs)
  - Media: AFF, FTP, and DVD
  - Release: May 2012
- Summary File 2 Urban/Rural Update File
  - Urban/rural population and housing unit counts
  - Characteristics for urbanized areas and urban clusters
  - Lowest Level of Geography: Census tract
  - Media: AFF and FTP
  - Release: January 2013

# Census Briefs

- Topics:
  - Population Distribution and Change: 2000 to 2010 \*
  - Overview of Race and Hispanic Origin: 2010 \*
  - Age and Sex Composition: 2010 \*
  - The Hispanic Population: 2010 \*
  - The White Population: 2010 \*
  - The Black Population: 2010 \*
  - Housing Characteristics: 2010 \*
  - Congressional Apportionment: 2010 \*
  - The Older Population: 2010
  - More are planned
- Media: Internet, printed
  - <http://www.census.gov/population/www/cen2010/glance/files/2010CensusBriefs.pdf>

\* Census Brief has been released

# Congressional and State Legislative District Summary Files

- Congressional District Summary File
  - Newly redistricted Congressional Districts for 113<sup>th</sup> Congress
  - Lowest Level of Geography: Tracts within Congressional Districts
  - Media: AFF and FTP
  - Release: January 2013, and every 2 years thereafter as needed
- State Legislative District Summary File
  - Lowest Level of Geography: Places
  - Media: AFF and FTP
  - Release: June 2013, and every 2 years thereafter as needed

# American Indian and Alaska Native (AIAN) Summary File

- Same content as Summary File 2
- Tables repeated for:
  - Total population
  - Total AIAN population
  - Total American Indian population
  - Total Alaska Native population
  - Numerous American Indian and Alaska Native tribes
- Threshold: 100 people in the U.S.
- Iterations: Approximately 1,750 AIAN iteration groups
- Lowest Level of Geography: Census tract
- Media: AFF and FTP
- Release: December 2012

# Public Use Microdata Sample (PUMS) Files

- Individual records of characteristics:
  - Age
  - Sex
  - Race
  - Hispanic or Latino origin
  - Household type
  - Relationship to householder
  - Tenure (owner/renter)
  - Occupancy and vacancy status
- Lowest Level of Geography: Public Use Microdata Area (PUMAs) of 100,000 or more population
- Media: FTP and DVD
- Release: December 2012 – April 2013



# Summary Population and Housing Characteristics Reports Series

- Data tables on:
  - Age
  - Sex
  - Race
  - Hispanic or Latino origin
  - Households
  - Families
  - Housing tenure and occupancy
  - Population density
  - Area measurements
- Lowest Level of Geography: Places
- Media: Internet, PDF only
- Release: May 2012 – December 2012

# Population and Housing Units Counts Report Series

- Historical population and housing unit counts (1990, 2000, 2010)
  - Population density
  - Area measurements
- Lowest Level of Geography: Places
- Media: Printed report and Internet PDF
- Release: April 2013 – September 2013

# Characteristics of American Indians and Alaska Natives by Tribe Report

- Population and housing characteristics for selected American Indian and Alaska Native tribes
- Lowest Level of Geography: States
- Media: Printed report and Internet PDF
- Release: April 2013

# Advance Group Quarters Summary File

- Table showing counts for 7 types of group quarters
  - Correctional facilities for adults
  - Juvenile facilities
  - Nursing facilities/Skilled-nursing facilities
  - Other institutional facilities
  - College/University student housing
  - Military quarters
  - Other noninstitutional facilities
- Identical to table P42 in Summary File 1
- Lowest level of Geography: Blocks
- Media: FTP site
- Released: April 20, 2011

# Same-Sex Couple Households Supplemental Tables

- Data showing the number of households with a partner or spouse that is the same sex as the householder by the sex of the partners and by the presence of own children
- Numbers include both 2010 Census and ACS estimates
- Lowest Level of Geography: State
- Media: Searchable from AFF
- Released: September 27, 2011

# At A Glance

[www.census.gov/population/www/cen2010/glance/index.html](http://www.census.gov/population/www/cen2010/glance/index.html)



## 2010 CENSUS DATA PRODUCTS: UNITED STATES *At a Glance* (Version 1.6)

*Revised 9/6/2011*

| Planned Release Date <sup>1</sup>   | Data Products   | Lowest Level Geography                                    |
|---|---|---|
| <u>States:</u><br>Released<br>February 3, 2011—<br>March 24, 2011   | <b>2010 Census Redistricting Data (P.L. 94-171) Summary File:</b> <ul style="list-style-type: none"> <li>State population counts for race and Hispanic or Latino categories</li> <li>State housing unit counts by occupancy status (occupied units, vacant units)</li> </ul> Media: Internet tables, DVD, download capability | Blocks  |
| <u>National:</u><br>April 14, 2011  | <b>National Summary File of Redistricting Data:</b> <ul style="list-style-type: none"> <li>Population and housing unit counts for the United States, regions, divisions, and American Indian, Alaska Native, and Native Hawaiian Areas</li> </ul> Media: Internet tables, download capability                                 | American Indian, Alaska Native, and Native Hawaiian areas |
| <u>States:</u><br>Released May 5-26, 2011<br><u>National:</u><br>Released May 26, 2011<br><br><u>Geographic Update:</u> | <b>Demographic Profile:</b> <ul style="list-style-type: none"> <li>Selected population and housing characteristics</li> <li>Includes Congressional Districts of the 111<sup>th</sup> Congress .....</li> </ul><br><b>Geographic Update (to States and National):</b>  | Places/Functioning Minor Civil Divisions <sup>2</sup>     |

# Overview of the Modified Race Summary File

- Created for use in the Census Bureau's Estimates and Projections program
- Race modification reconciles 2010 Census race categories with official Office of Management and Budget (OMB) race categories (used in estimates processing)
- File is made available to the public for others to use

# Timeline

- No substantive changes to race modification edit since Census 2000
- First release of modified race data: **2000-2010 Intercensal Estimates** released Sept. 28, 2011
  - <http://www.census.gov/popest/estimates.html>
  - 6 race (5 “alone” races and a broad “Two or More Races” category)
- **Modified Race Summary File** will be released after all relevant 2010 Census data have been released (Summer 2012)
- Research will continue through 2014



# Race Modification Results

| Race              | Census 2010 |         | Modified Race |         |
|-------------------|-------------|---------|---------------|---------|
|                   | Number      | Percent | Number        | Percent |
| One Race          | 299,736,465 | 97.1    | 301,761,343   | 97.7    |
| White             | 223,553,265 | 72.4    | 241,937,061   | 78.4    |
| Black             | 38,929,319  | 12.6    | 40,250,635    | 13.0    |
| AIAN              | 2,932,248   | 0.9     | 3,739,506     | 1.2     |
| Asian             | 14,674,252  | 4.8     | 15,159,516    | 4.9     |
| NHPI              | 540,013     | 0.2     | 674,625       | 0.2     |
| Some Other Race   | 19,107,368  | 6.2     | (X)           | (X)     |
| Two or More Races | 9,009,073   | 2.9     | 6,984,195     | 2.3     |

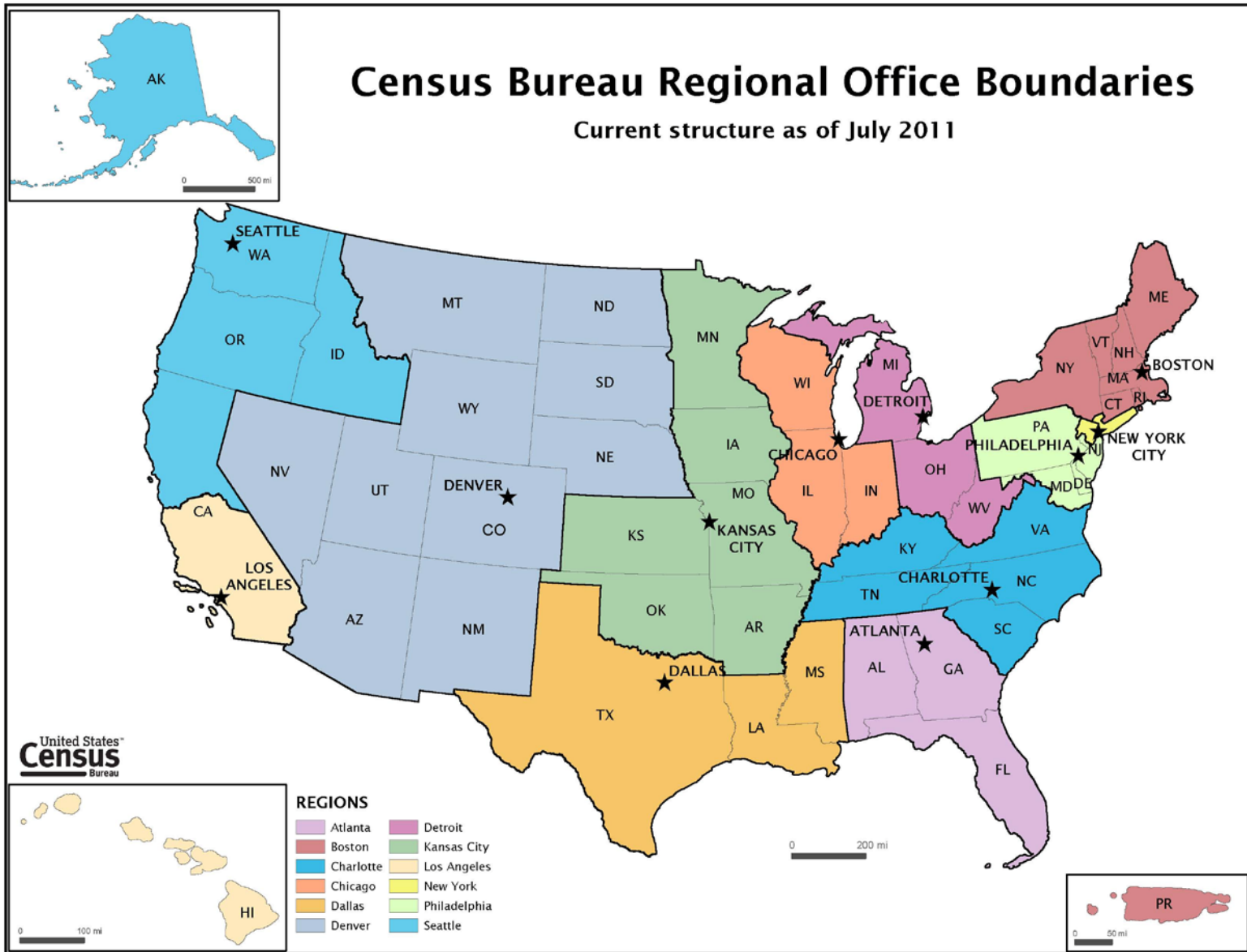
(X) Not applicable

Note: AIAN = American Indian and Alaska Native; NHPI = Native Hawaiian and Other Pacific Islander.

Sources: Census 2010 data available via <http://factfinder2.census.gov/>. Modified Race data from the intercensal estimates produced by the Population Division, U.S. Census Bureau, available via <http://www.census.gov/popest/intercensal/>.

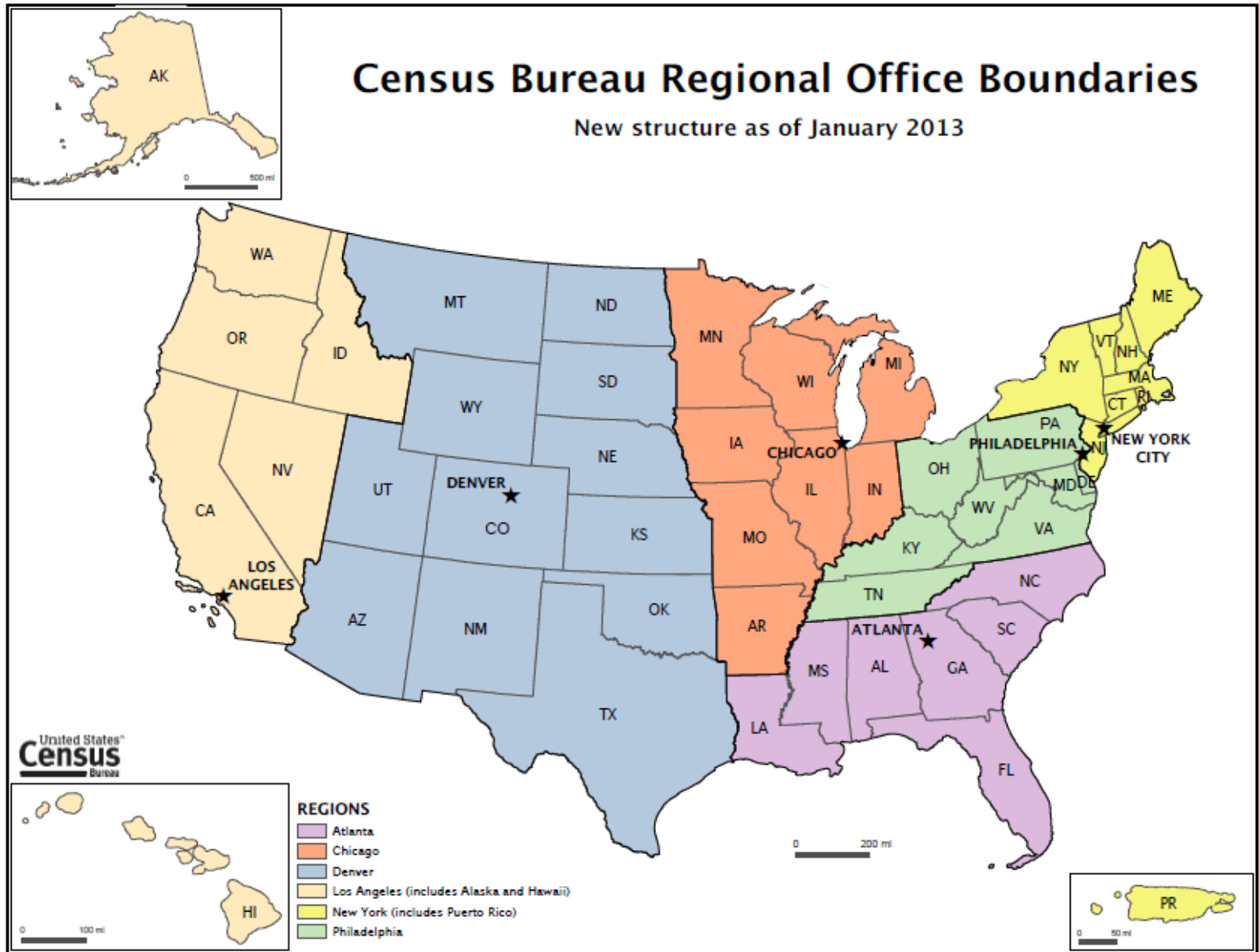
# Regional Office Realignment

- Announced in June 2011
- Implementation Began in January 2012
- Finished by November 2012
- Estimated Savings of \$15-18 Million per year
- Two key elements
  - Reduction in Offices
  - Field Management Changes



# Census Bureau Regional Office Boundaries

New structure as of January 2013



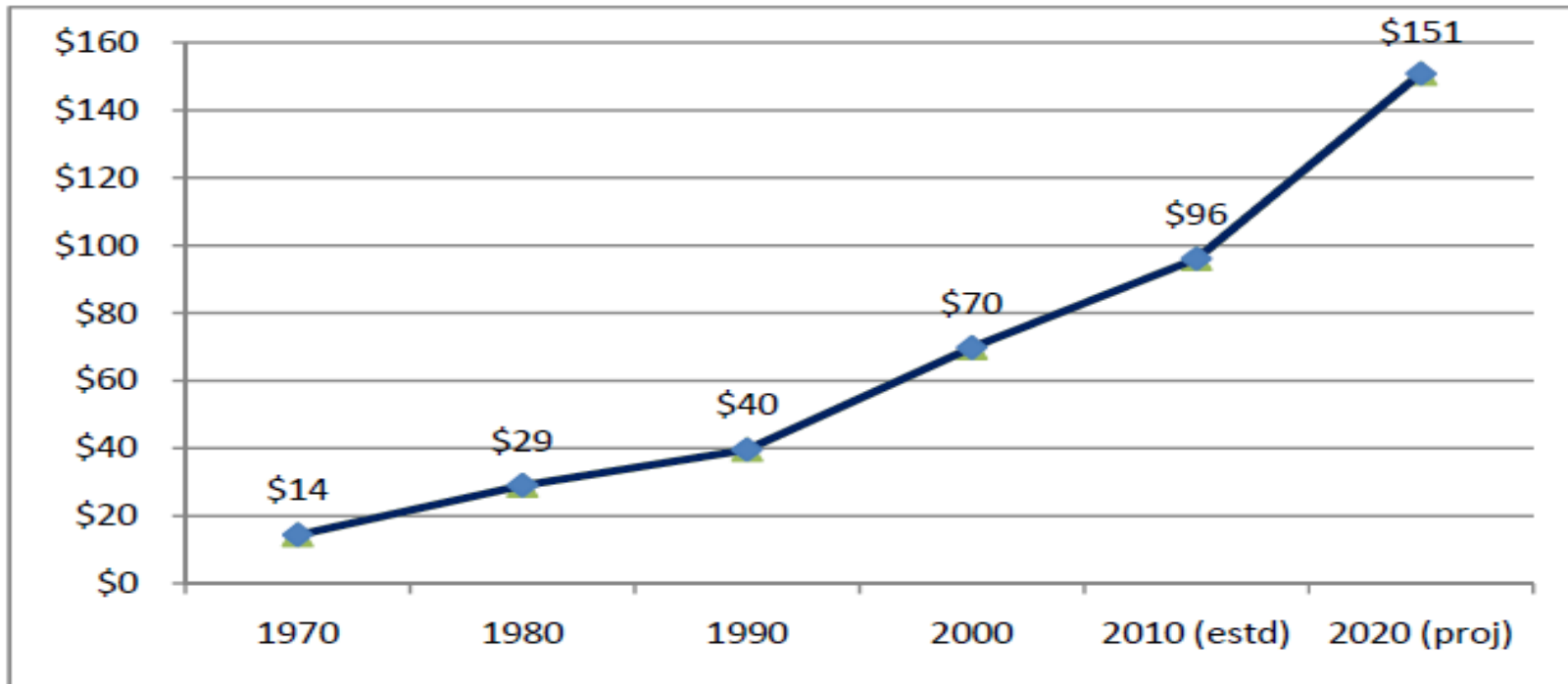
# What the Reorg means to you

- All of California managed out of 1 office
- Expanding support for data users
  - One person in San Francisco
  - One person in Seattle
  - Five in the Los Angeles office
- Greater focus on remote management of data
- Improvements in data quality

# 2020 Planning

# The Challenge and the Target

**Census Cost per Housing Unit (2010 Dollars)**



**Notes:** (1) Chart reflects cost projections based on known FY 2010 savings of \$1.87 billion as of October 4, 2010 (some additional adjustments may occur as cost information is finalized/verified); (2) Projected cost per housing unit for 2020 assumes no change in design and real cost growth from 1990-2000 and 2000-2010 averaged (57%); (3) Includes the costs for the MAF-TIGER Enhancement Program and American Community Survey.

# 2020 Census Vision

An efficient and quality census that counts people, once, only once, and in the right place.

## 2020 Census Mission

The 2020 Census will conduct a census of population and housing and disseminate data to the President, the States, and the American people.

## Guiding Principles for the 2020 Census

- Reduce Cost
- Maintain Quality
- Reduce Field Timeline
- Tailor Response Modes
- Leverage ACS
- Support Continual Frame Updating
- Support Agile Decision-making
- Reuse Data
- Leverage Systems and Methods
- Leverage Partnerships
- Support Organizational Solutions
- Build a 21<sup>st</sup> Century Workforce



## 2020 Census Goals

**An Efficient  
2020 Census**

**A Complete and  
Accurate Census**

**Embraced and  
Valued Results**

**A Well-Managed 2020  
Census Program**



# Likely to include...

- Emphasis on Internet Response
- Targeted Field Address Updates
- Increased Use of Administrative Records
- Focus on Hard To Count

Done!