

# 2012 Interim Projections

Where we are, were, and are going

# Overview

- Review of full set contents
- Status of needed components
- Historical Population Overview
- Interim Projection Results

# 2012 “Full” Projections

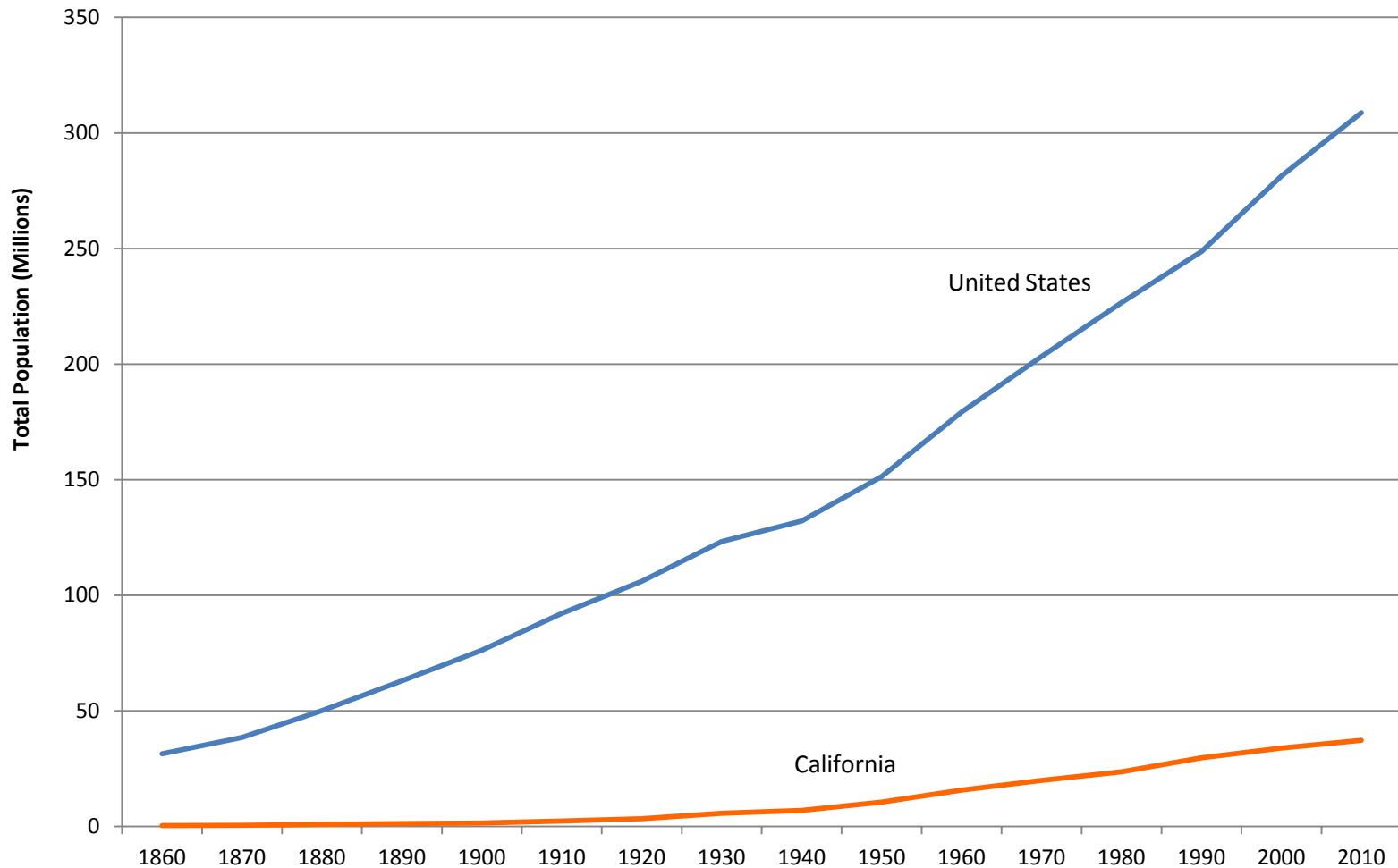
- Aiming for a late 2012, early 2013 release date
- These will extend the horizon to 2060
- Complete OMB race groups: 6 Hispanic Exclusive [White, African-American, Asian, NHOPI, AIAN, Multi-race] and Hispanic
- Single year of age (most tabulation will be in 5-year cohorts)
- Sex
- For all counties and the state

# Needed Inputs

- Modified Race file (MARS): Needed to eliminate the “some other race” responses from the Census
  - Important for California since 90.4% of these responses in 2000 were Hispanic
  - No change to age (age 0 problem, age clumping)
- Input from stakeholders

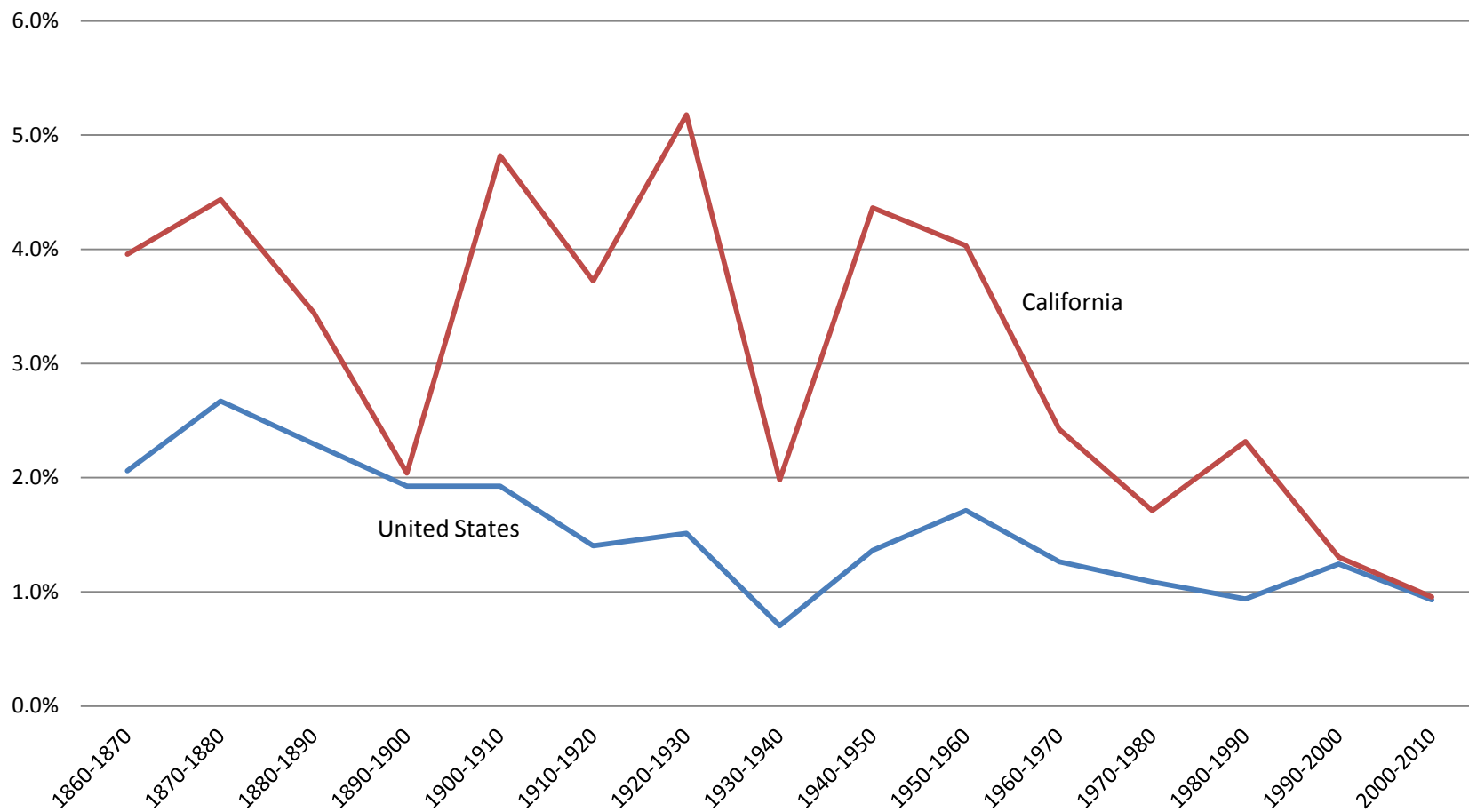
# Where we've been...

## U.S. and California Population 1860-2010



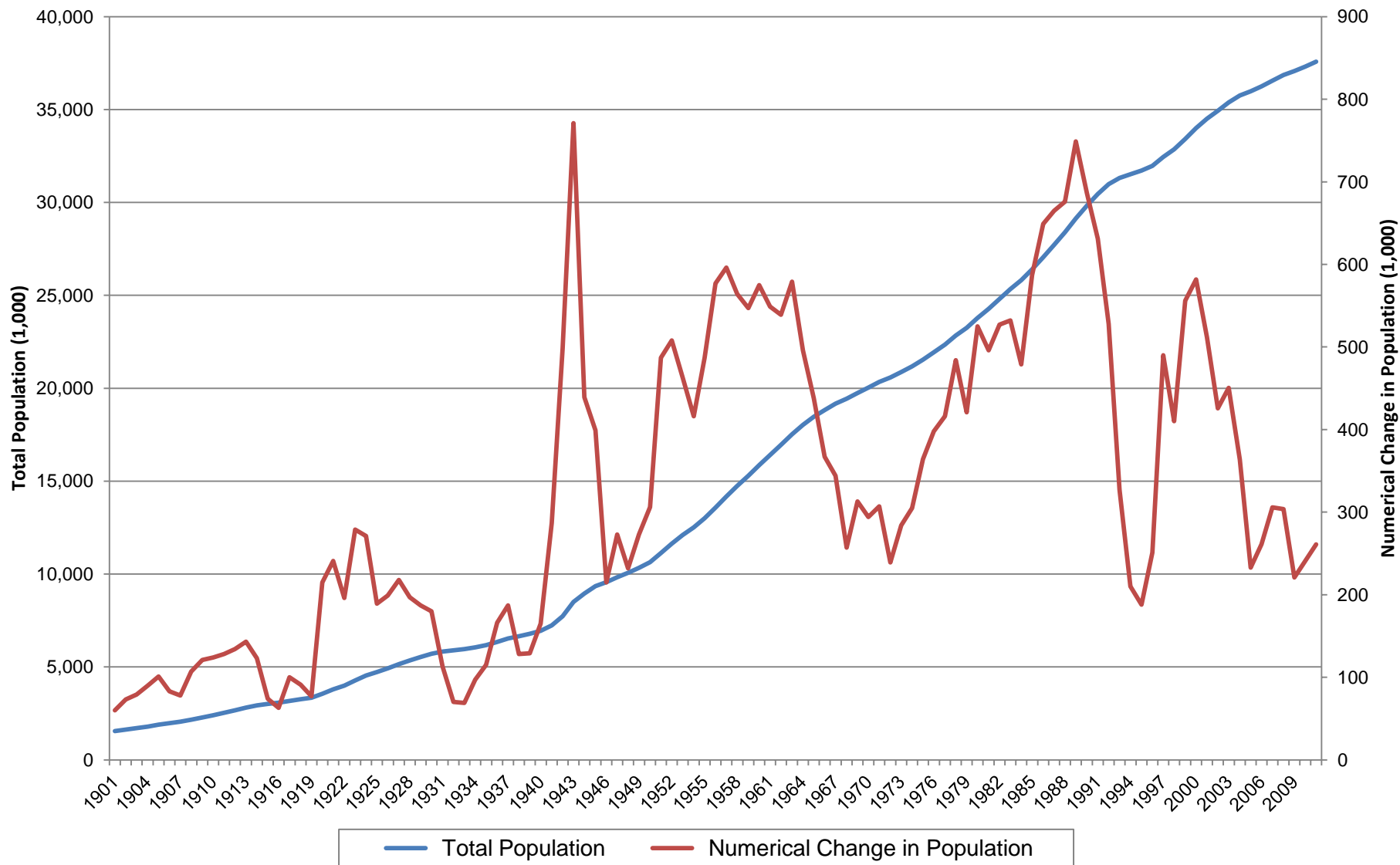
Source: 1860 to 2010 Decennial Census, U.S. Census Bureau

## U.S. and California Annual Growth Rates



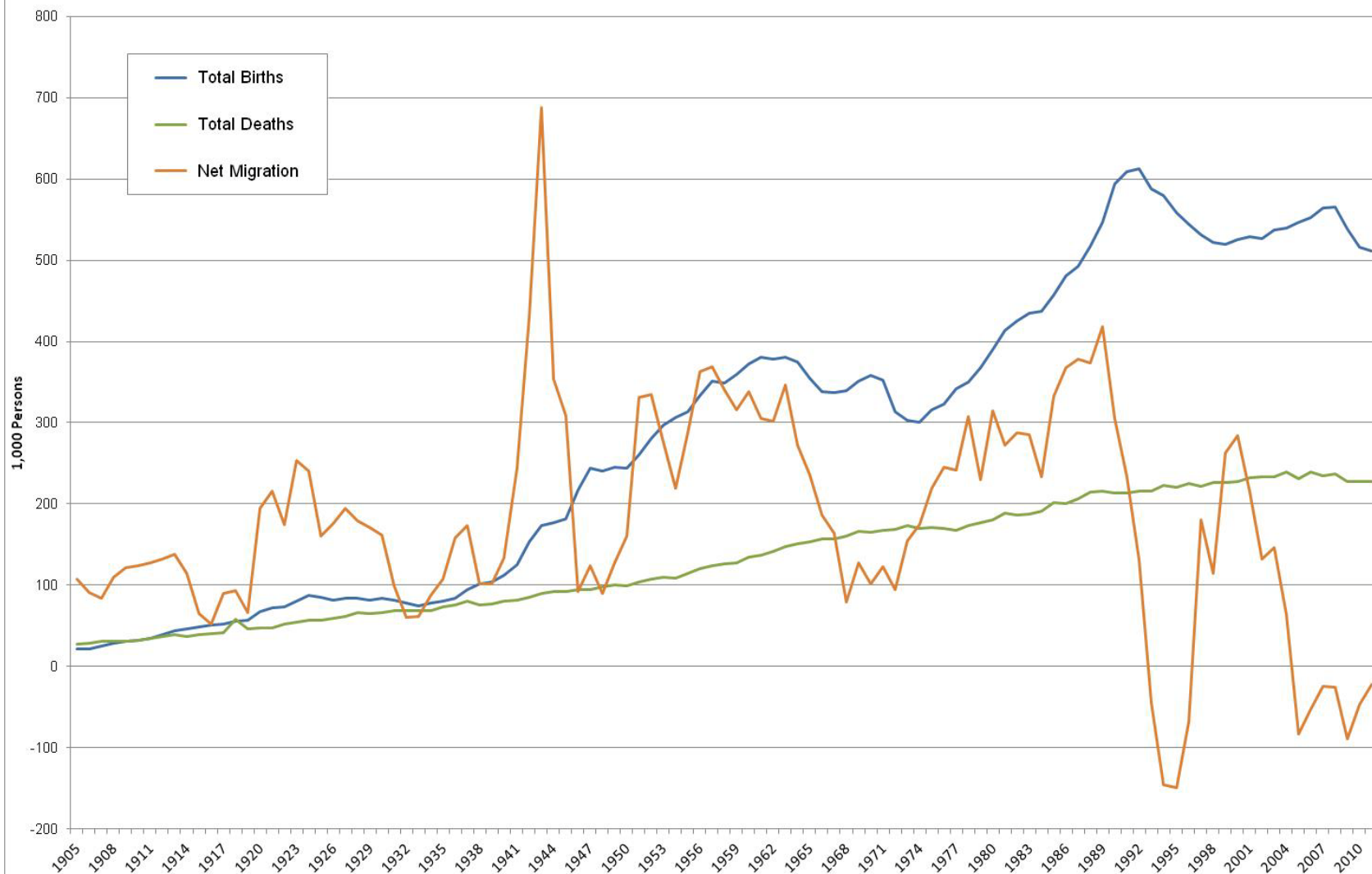
Source: 1860-2010 Decennial Census, U.S. Census Bureau

# Total Population and Numerical Change for California 1901 - 2011



Source: *Population Estimates, with Components of Change and Crude Rates, July 1, 1900-2011*. California Department of Finance, December 2011  
 Chart prepared by: Demographic Research Unit, California Department of Finance, April 23, 2012

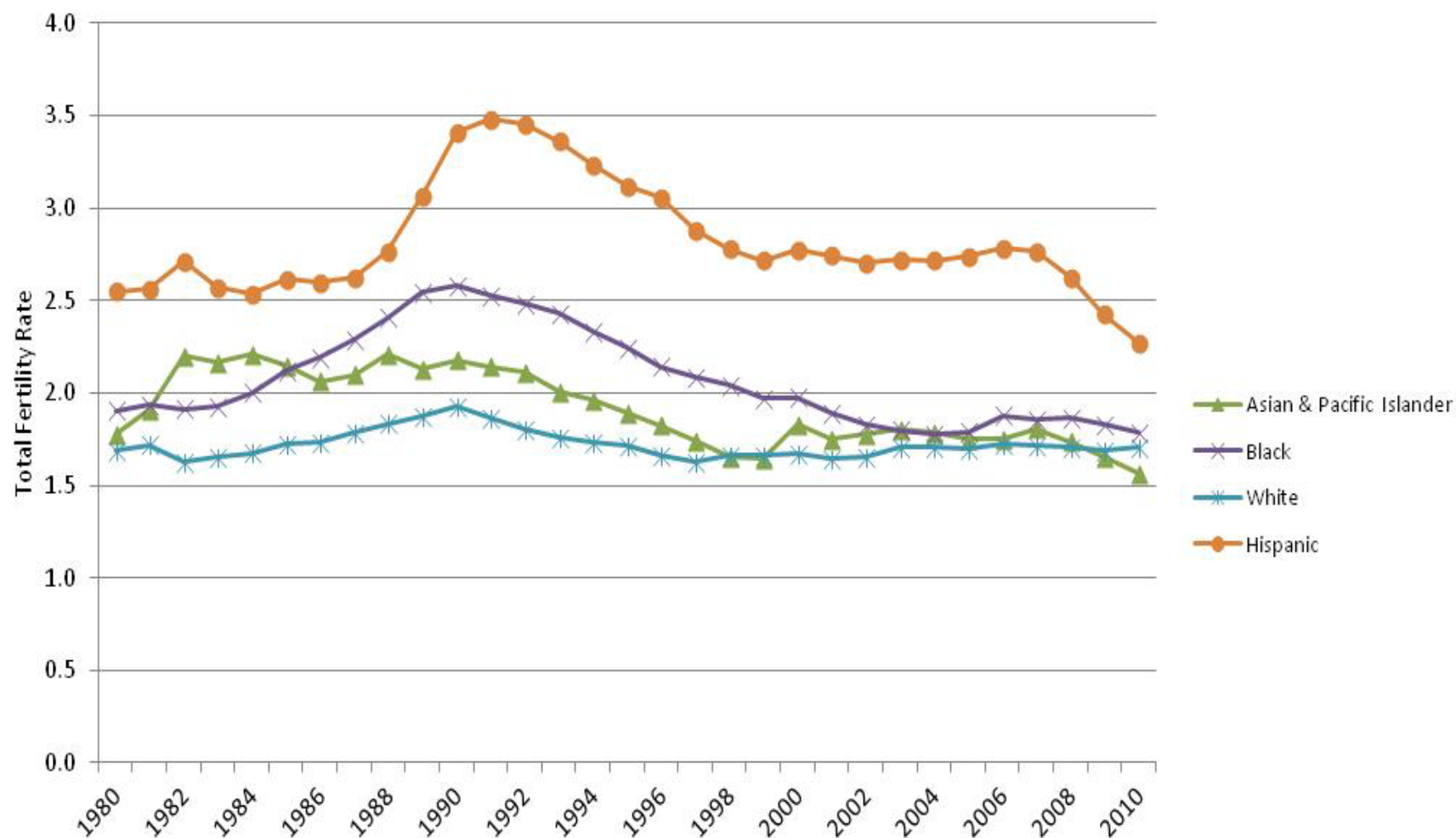
## Components of Population Change for California 1905-2011



Source: State of California, Department of Finance, *California Population Estimates, with Components of Change and Crude Rates, July 1, 1900-2011*. Sacramento, California, December 2011  
 Chart prepared by: Demographic Research Unit, California Department of Finance, April 23, 2012



## Total Fertility Rates by Race for California

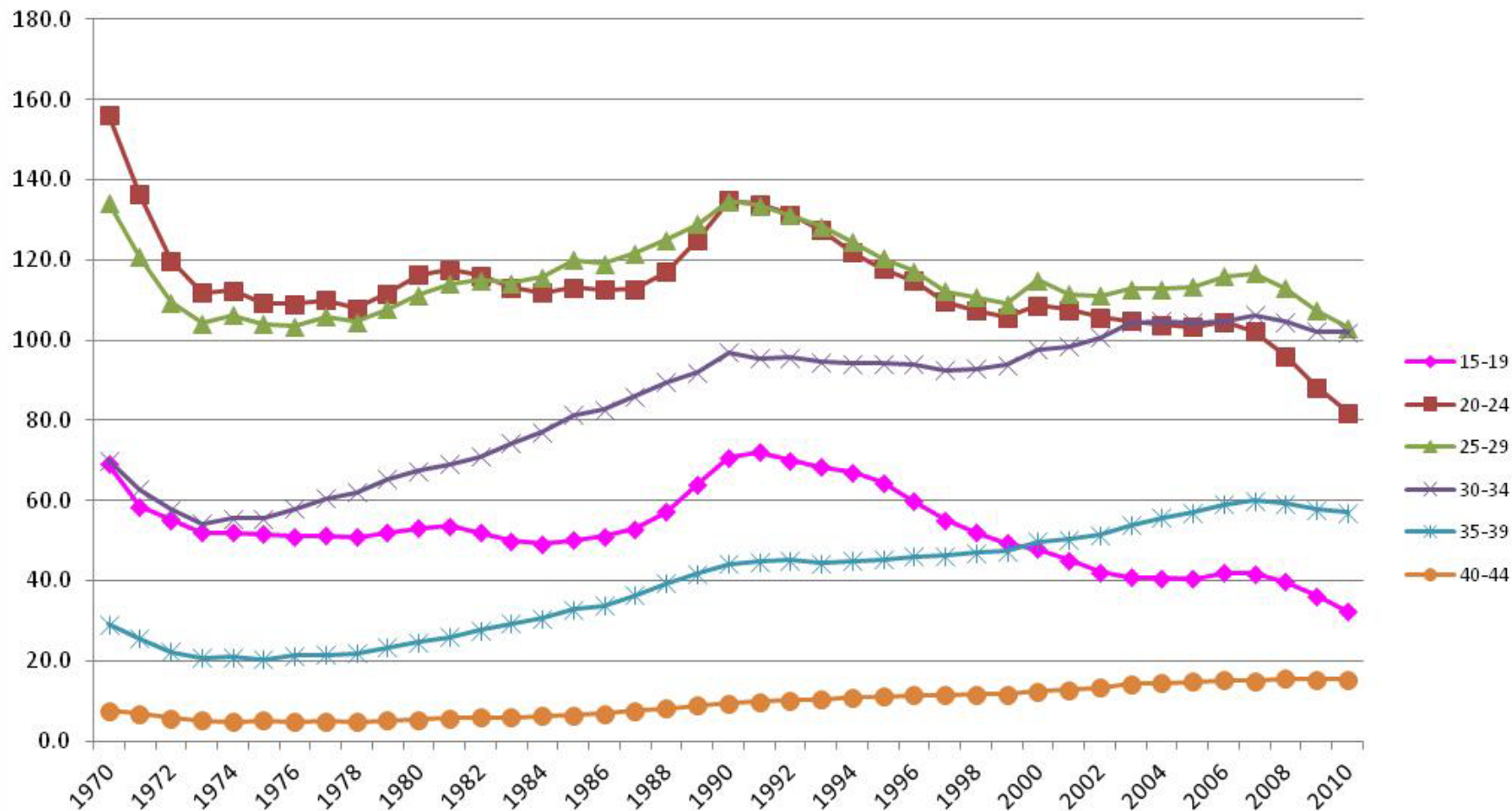


Total Fertility Rate is the expected number of children born to a woman during her childbearing years.

Source for Births: California Department of Public Health, Vital Statistics Branch

Chart prepared by: Demographic Research Unit, California Department of Finance, April 23, 2012

## Age-Specific Fertility Rates - Total Population California, 1970-2010



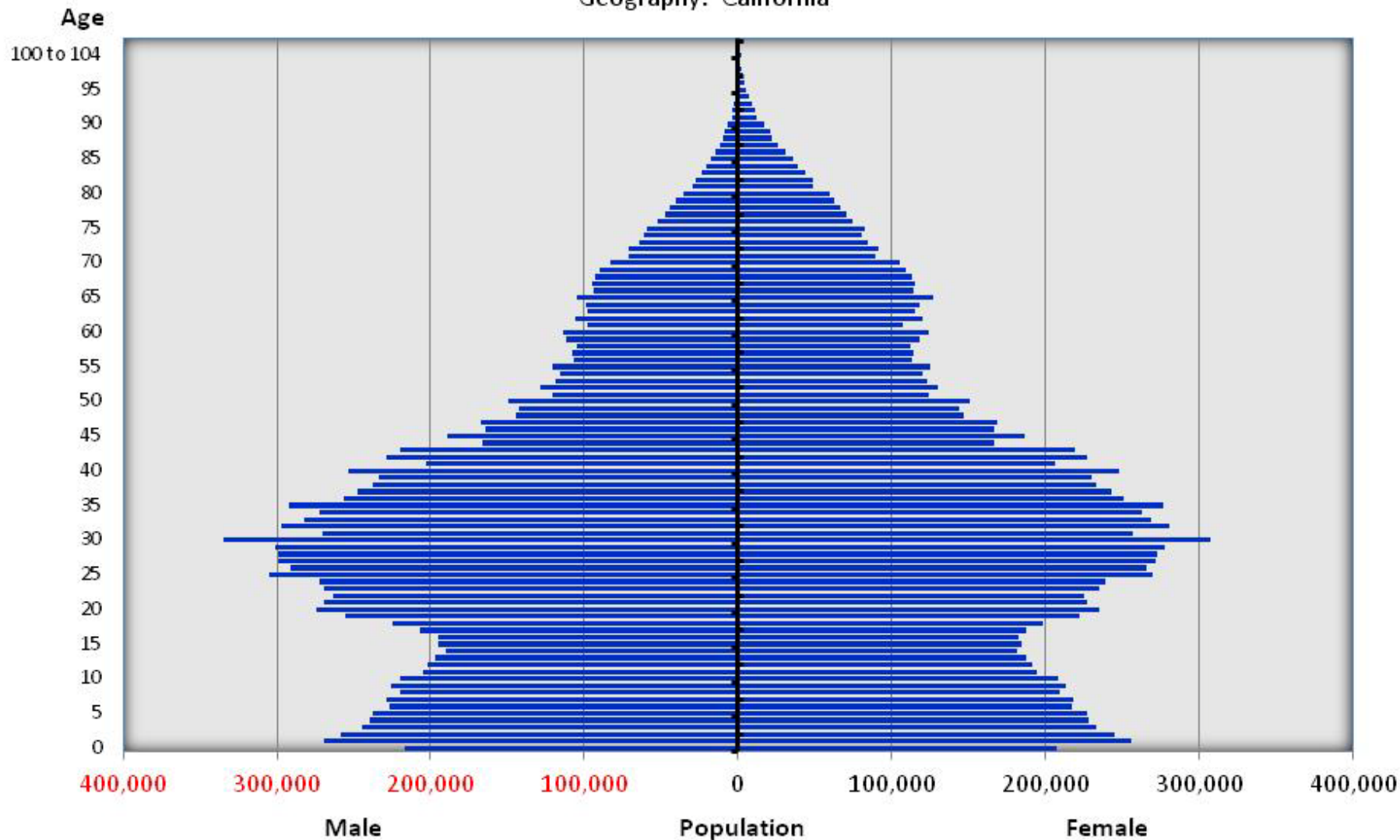
Age-Specific Fertility Rate (ASFR) is the number of live births per 1000 women in the specific age cohort in a given year.

Source for Births: California Department of Public Health, Vital Statistics Branch

Chart prepared by: Demographic Research Unit, California Department of Finance, April 23, 2012

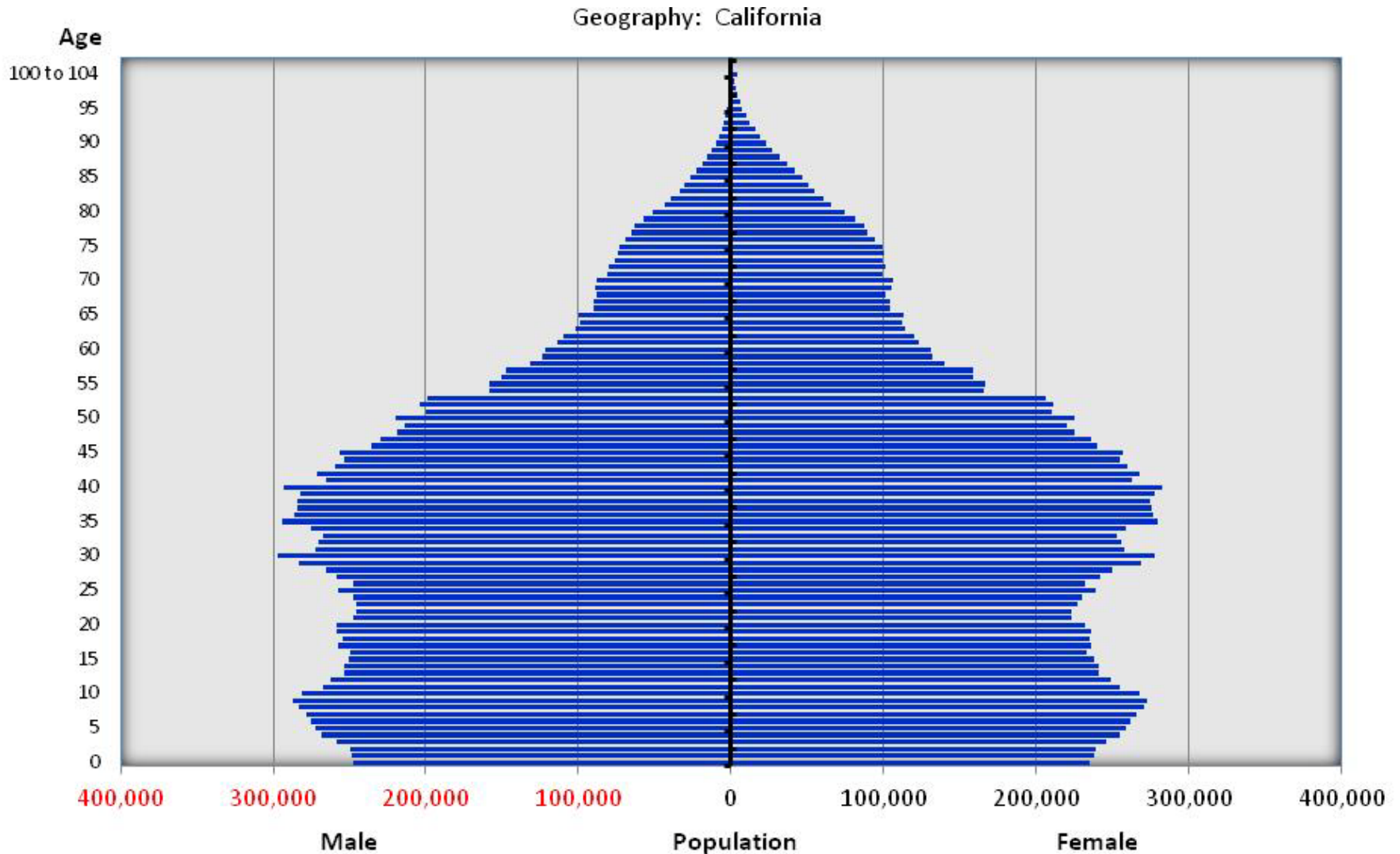
# 1990 California by Age and Sex

Geography: California



Source: 1990 Census of Population, U.S. Census Bureau

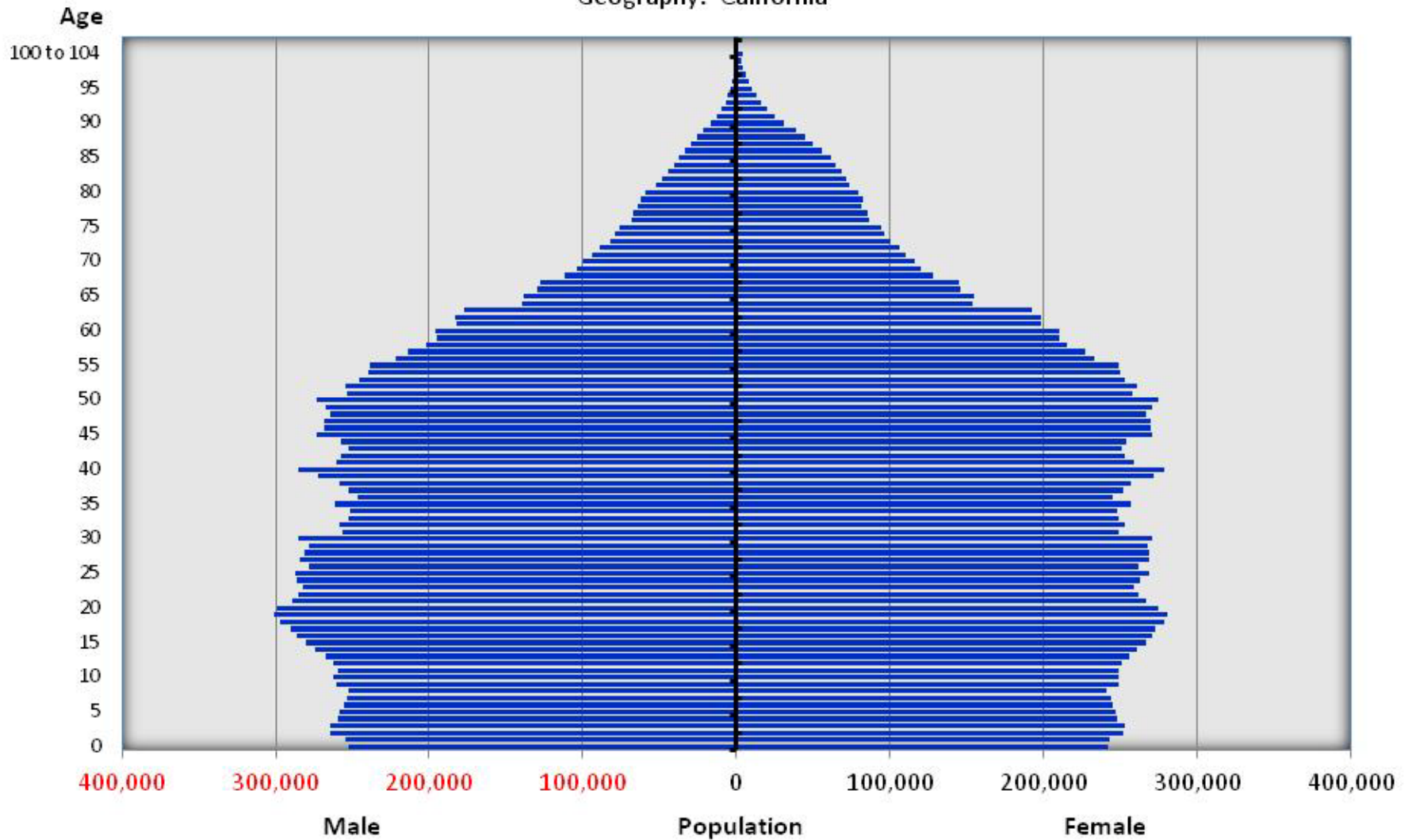
# 2000 California by Age and Sex



Source: 2000 Census of Population, U.S. Census Bureau

# 2010 California by Age and Sex

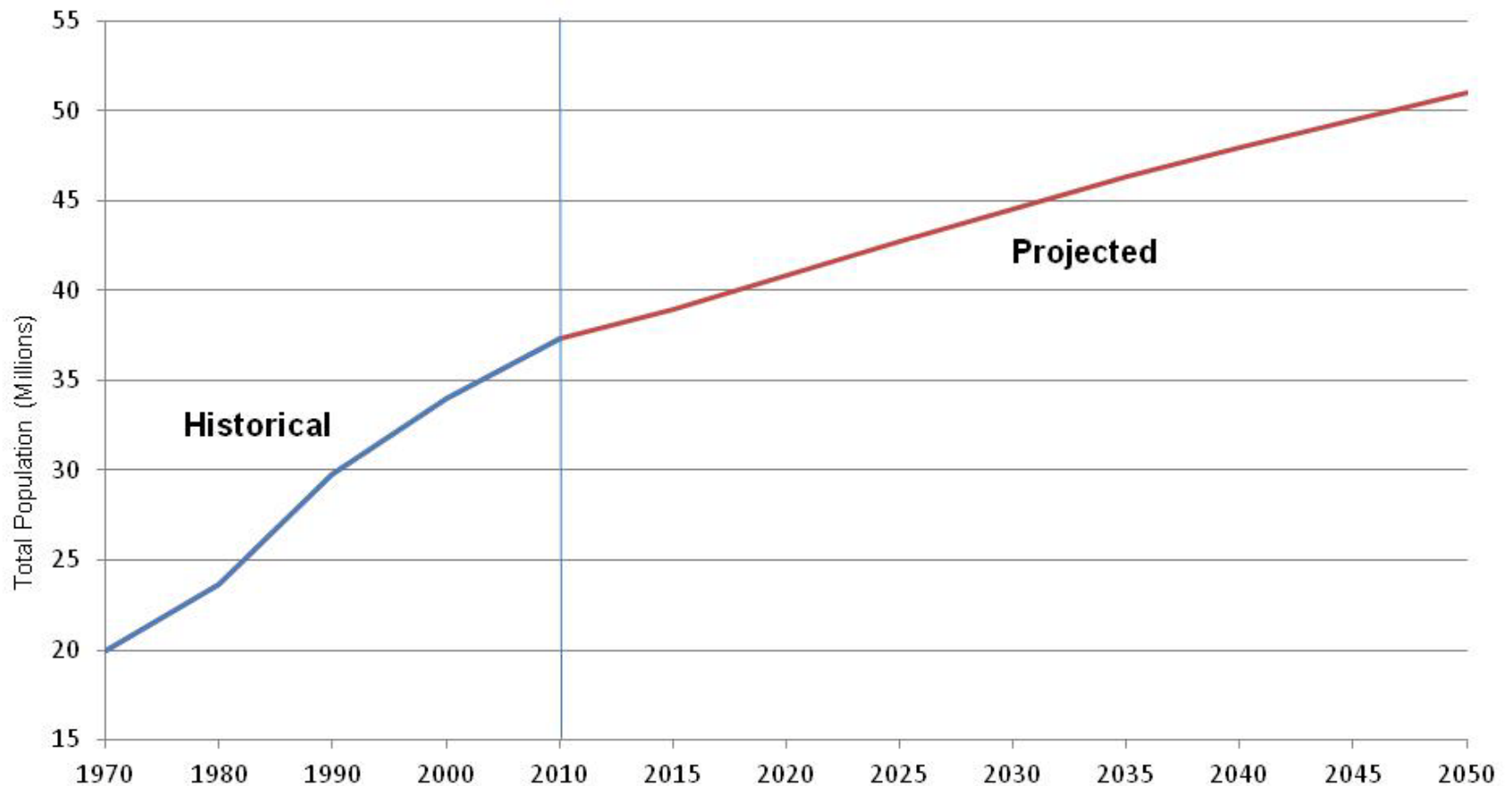
Geography: California



Source: 2010 Census of Population, U.S. Census Bureau

# Where are we going...

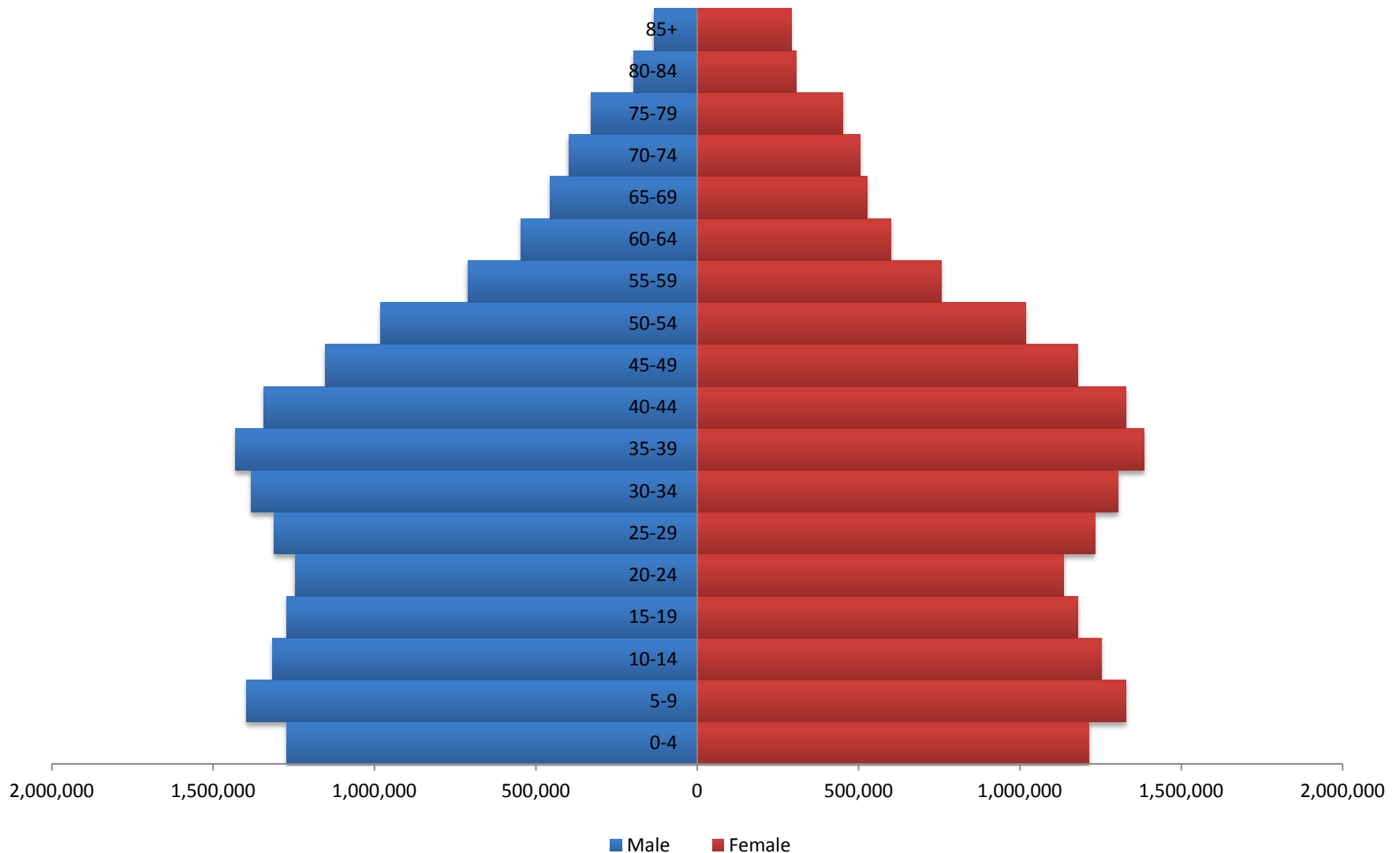
## Historical and Projected Total Population for California 1970 - 2050



Source: State of California, Department of Finance, Interim Population Projections for California and Its Counties 2010-2050, May 2012.  
1970-2000 Decennial Census, U.S. Census Bureau

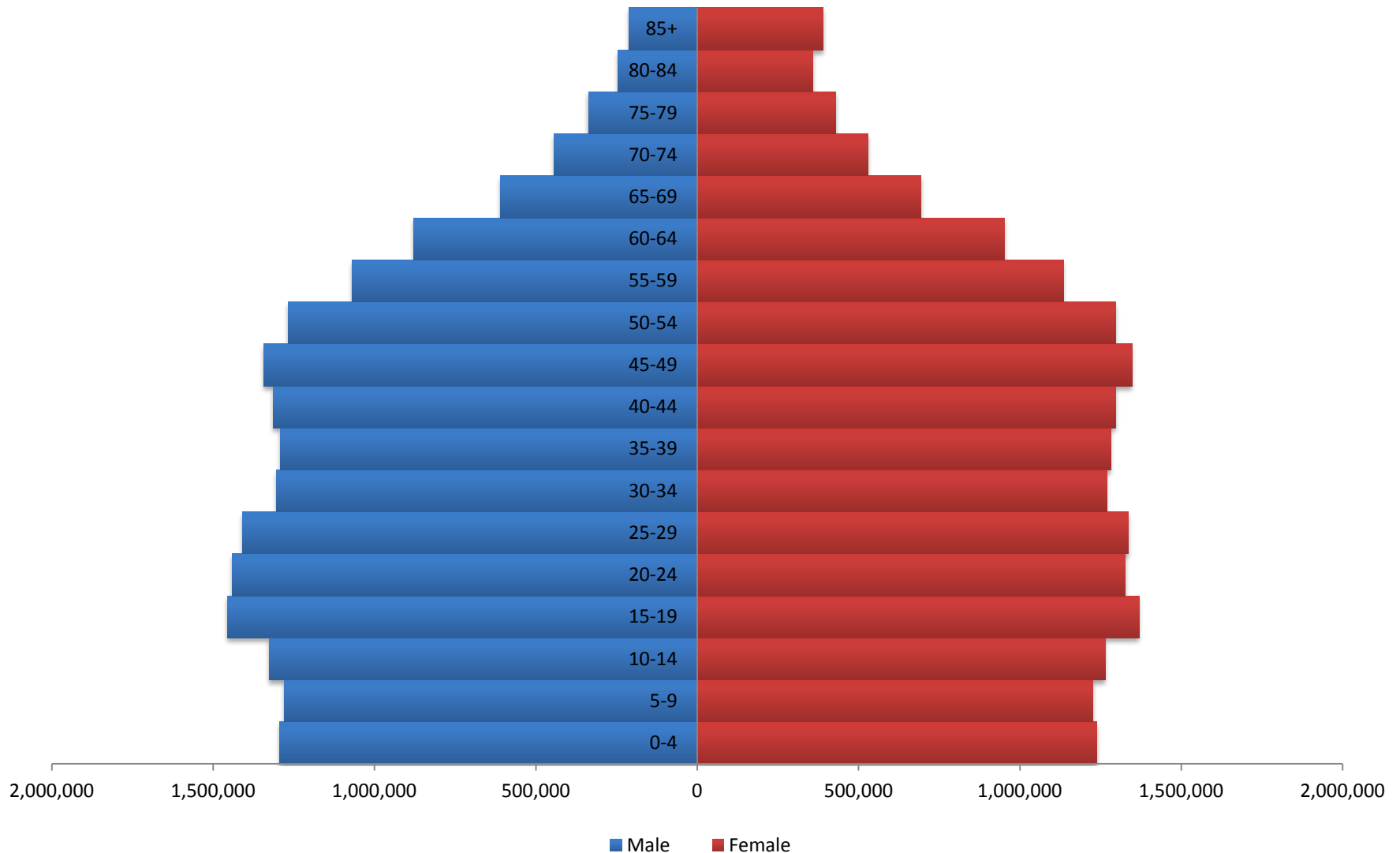
Chart prepared by: Demographic Research Unit, California Department of Finance, May 7, 2012.

## California 2000



Source: *Interim Population Projections for California and Its Counties 2010-2050*, California Department of Finance

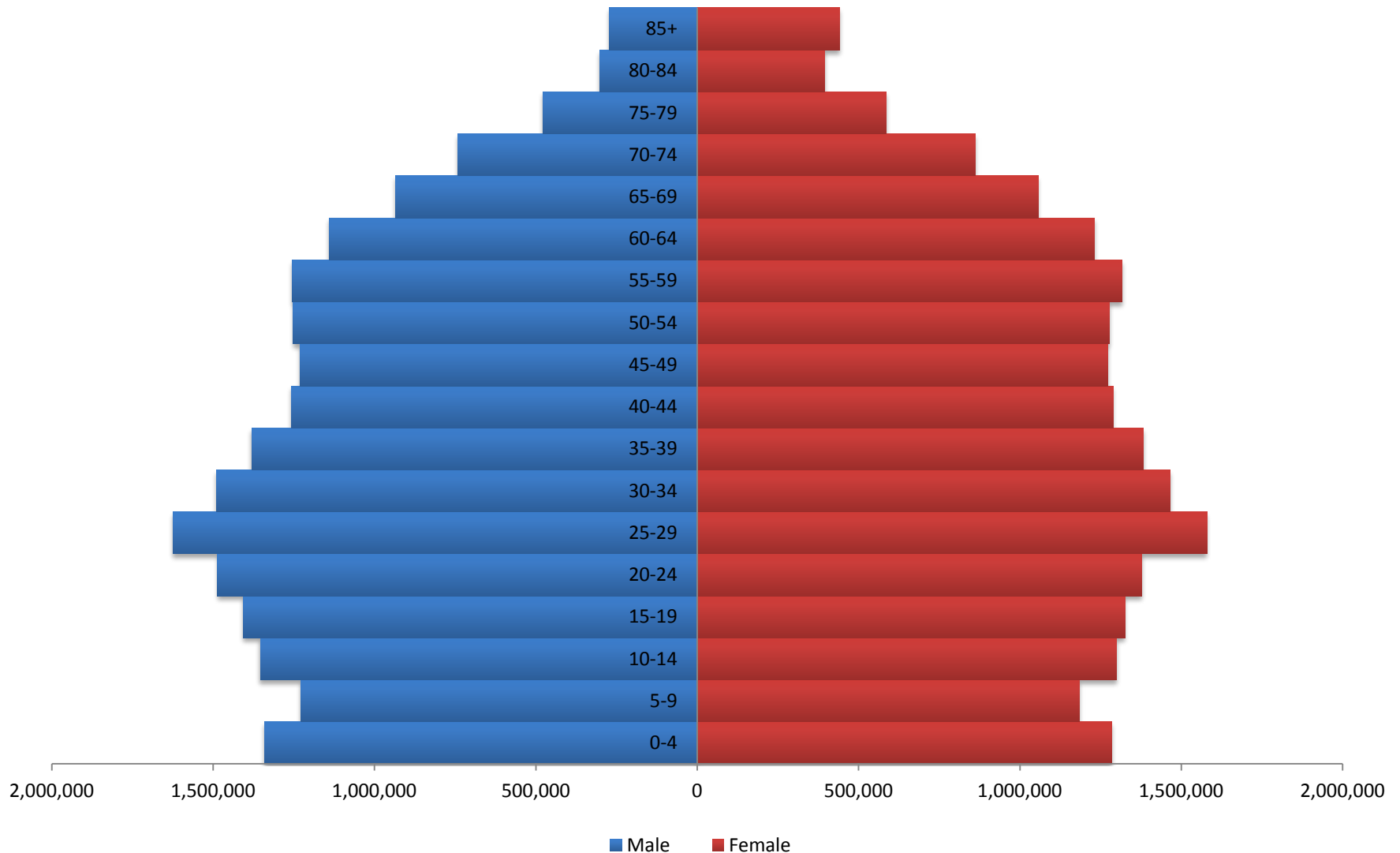
## California 2010



Source: *Interim Population Projections for California and Its Counties 2010-2050*, California Department of Finance

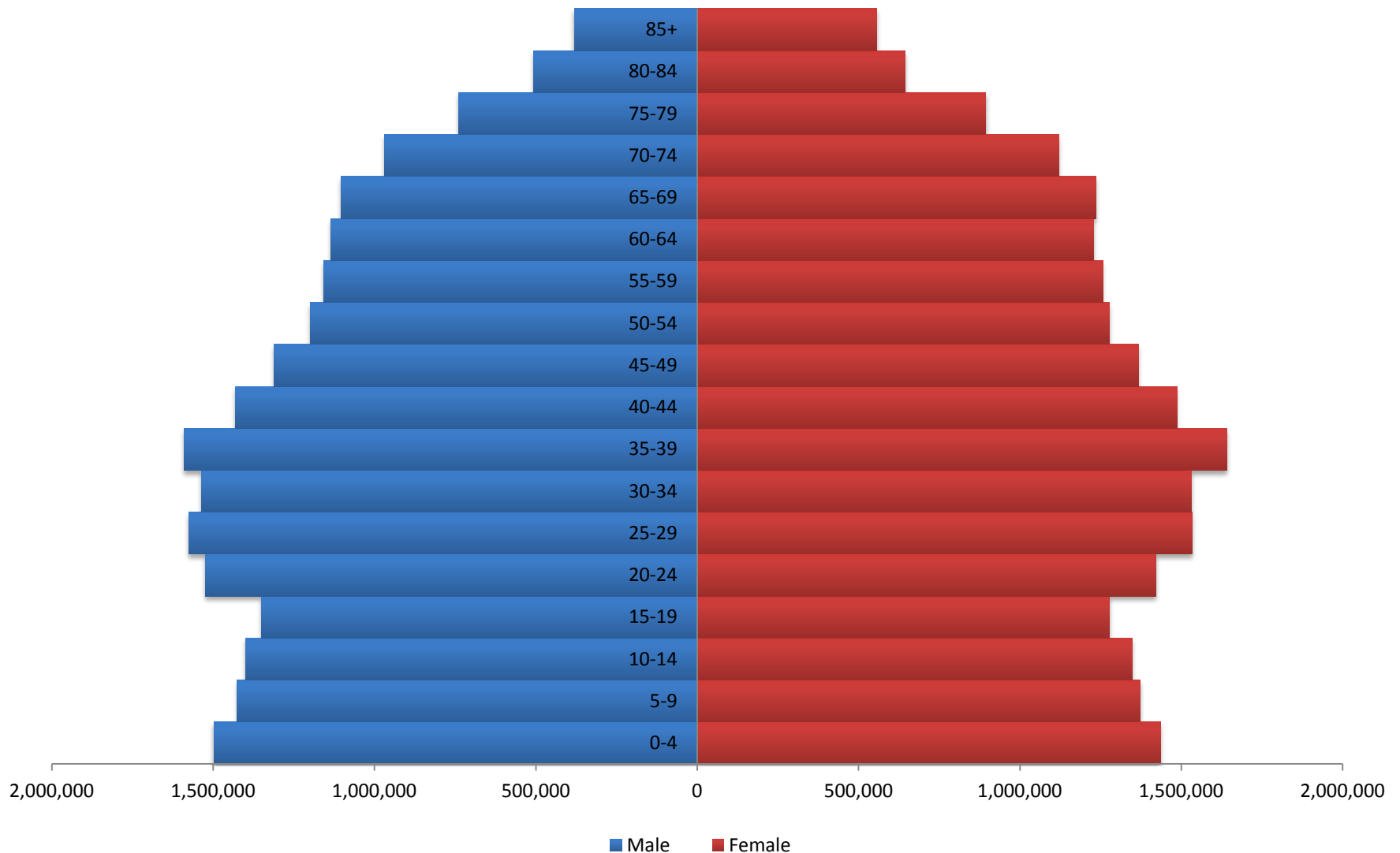


## California 2020



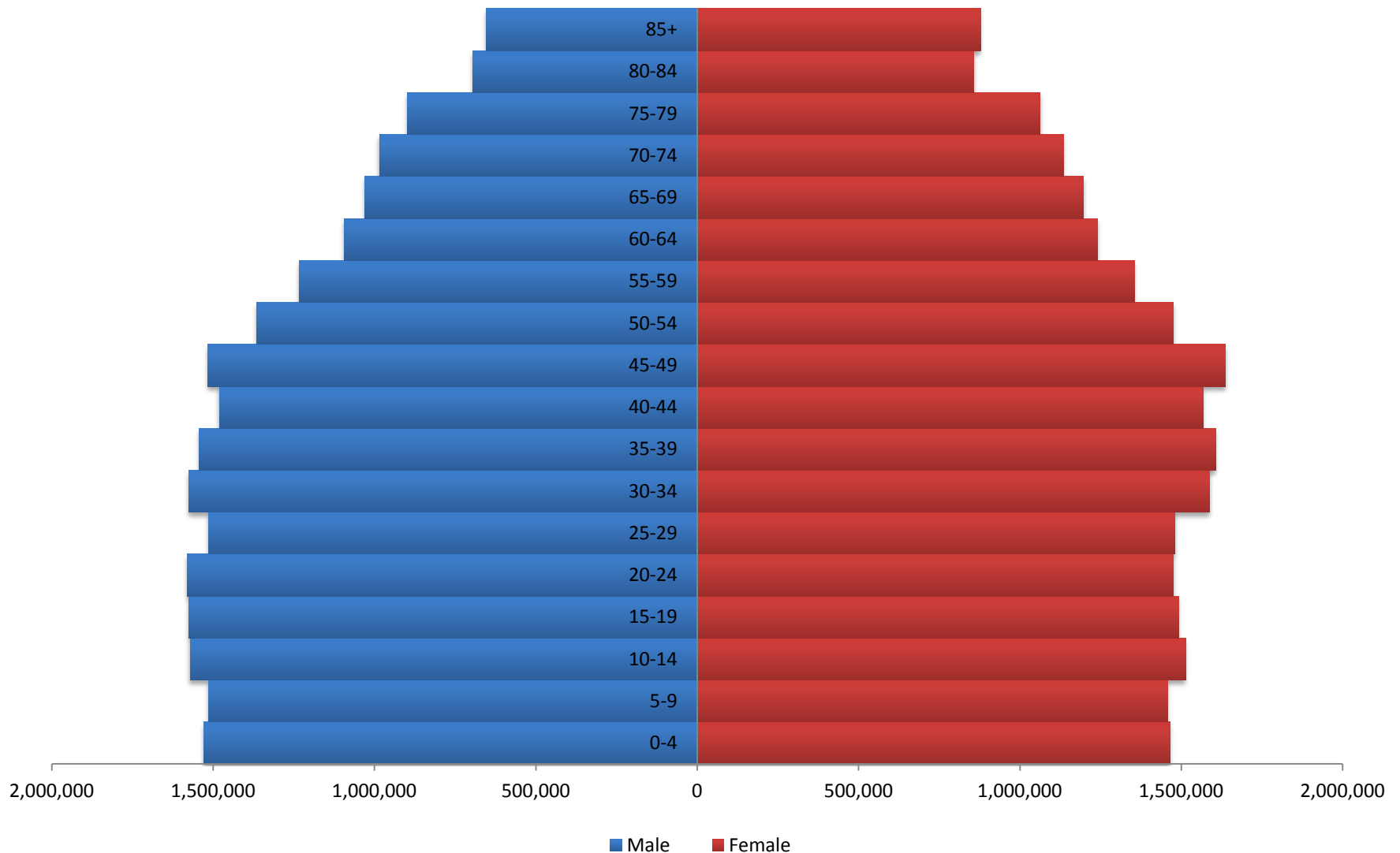
Source: *Interim Population Projections for California and Its Counties 2010-2050*, California Department of Finance

## California 2030



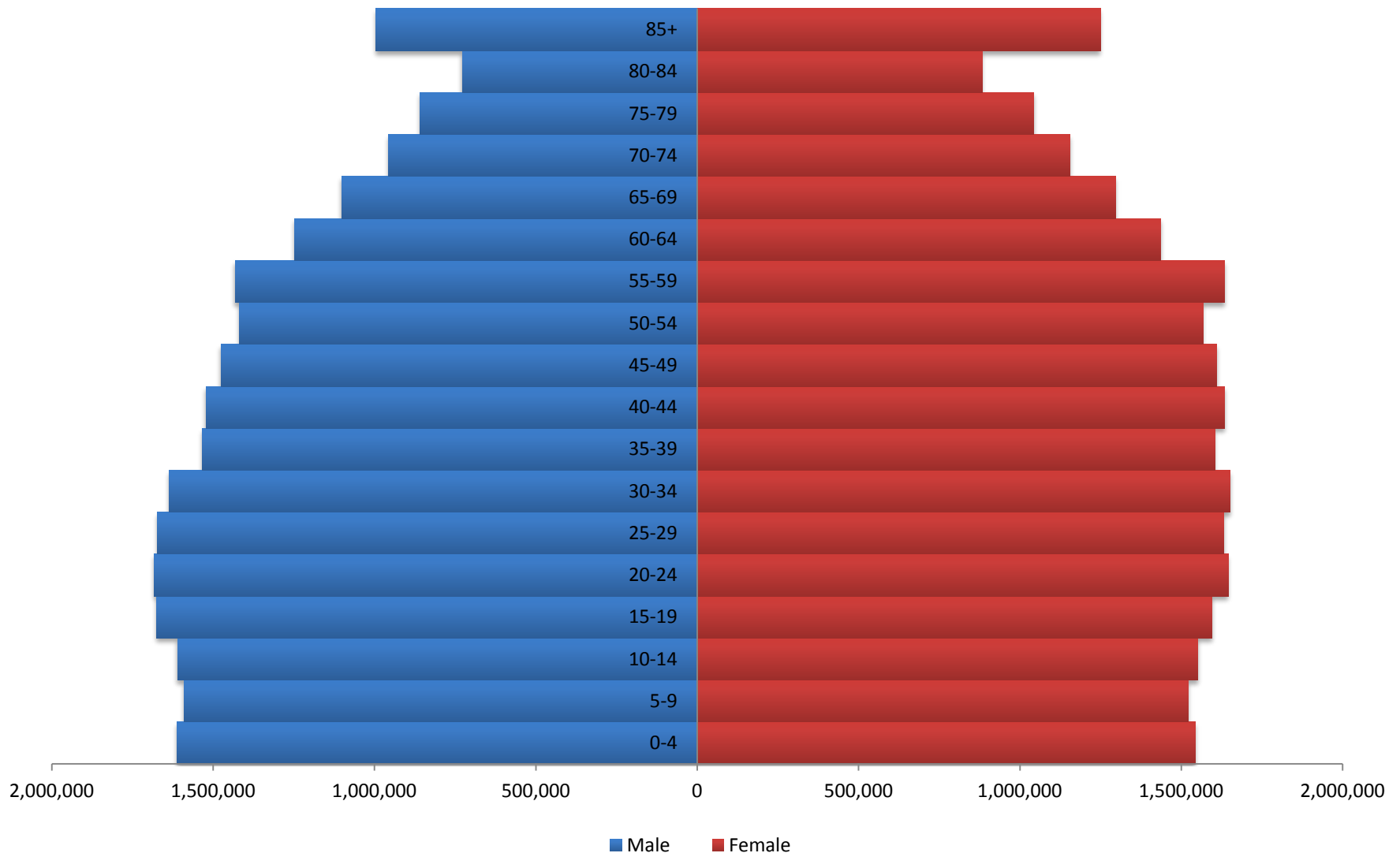
Source: *Interim Population Projections for California and Its Counties 2010-2050*, California Department of Finance

## California 2040



Source: *Interim Population Projections for California and Its Counties 2010-2050*, California Department of Finance

## California 2050

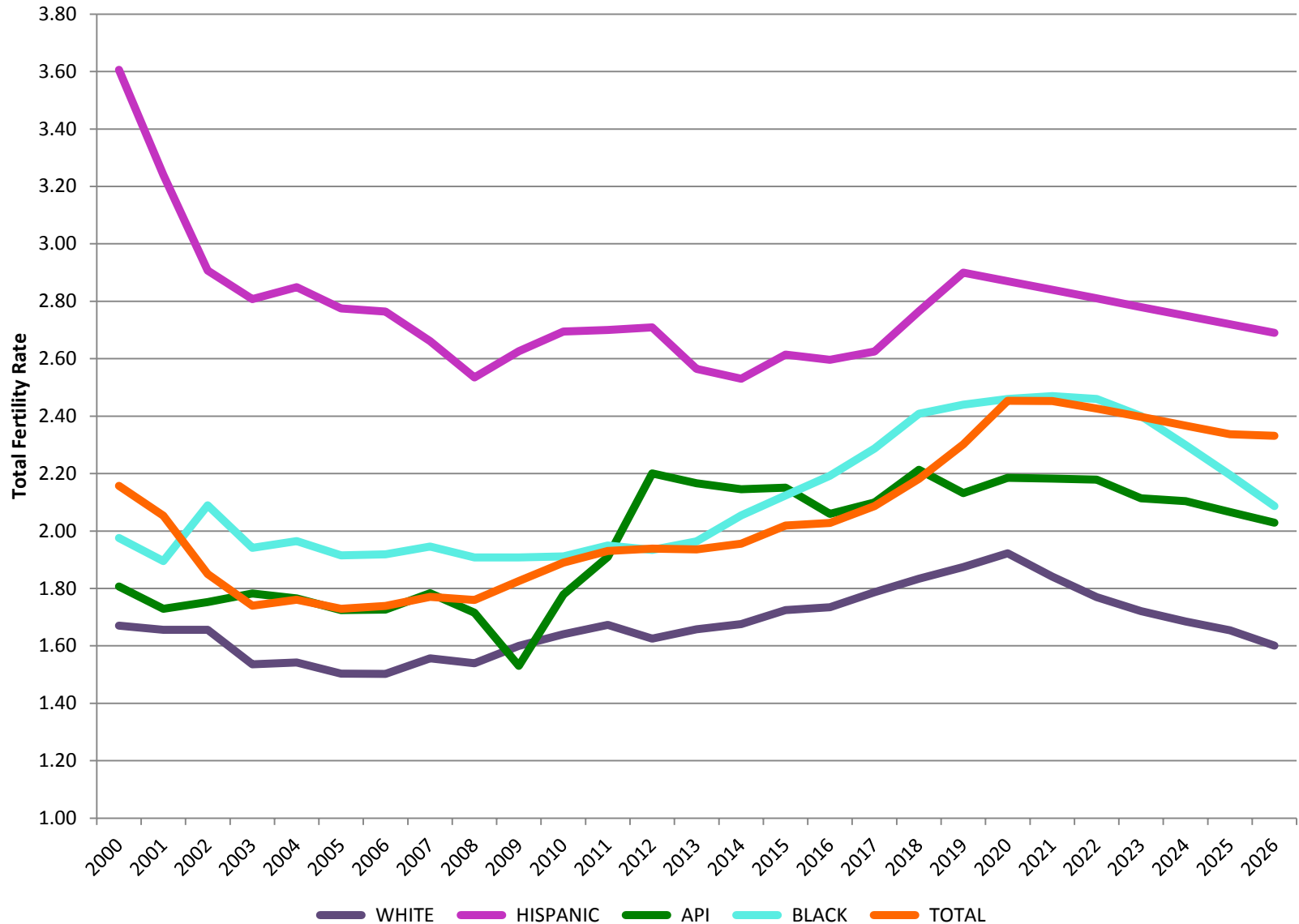


Source: *Interim Population Projections for California and Its Counties 2010-2050*, California Department of Finance

# Interim Projections

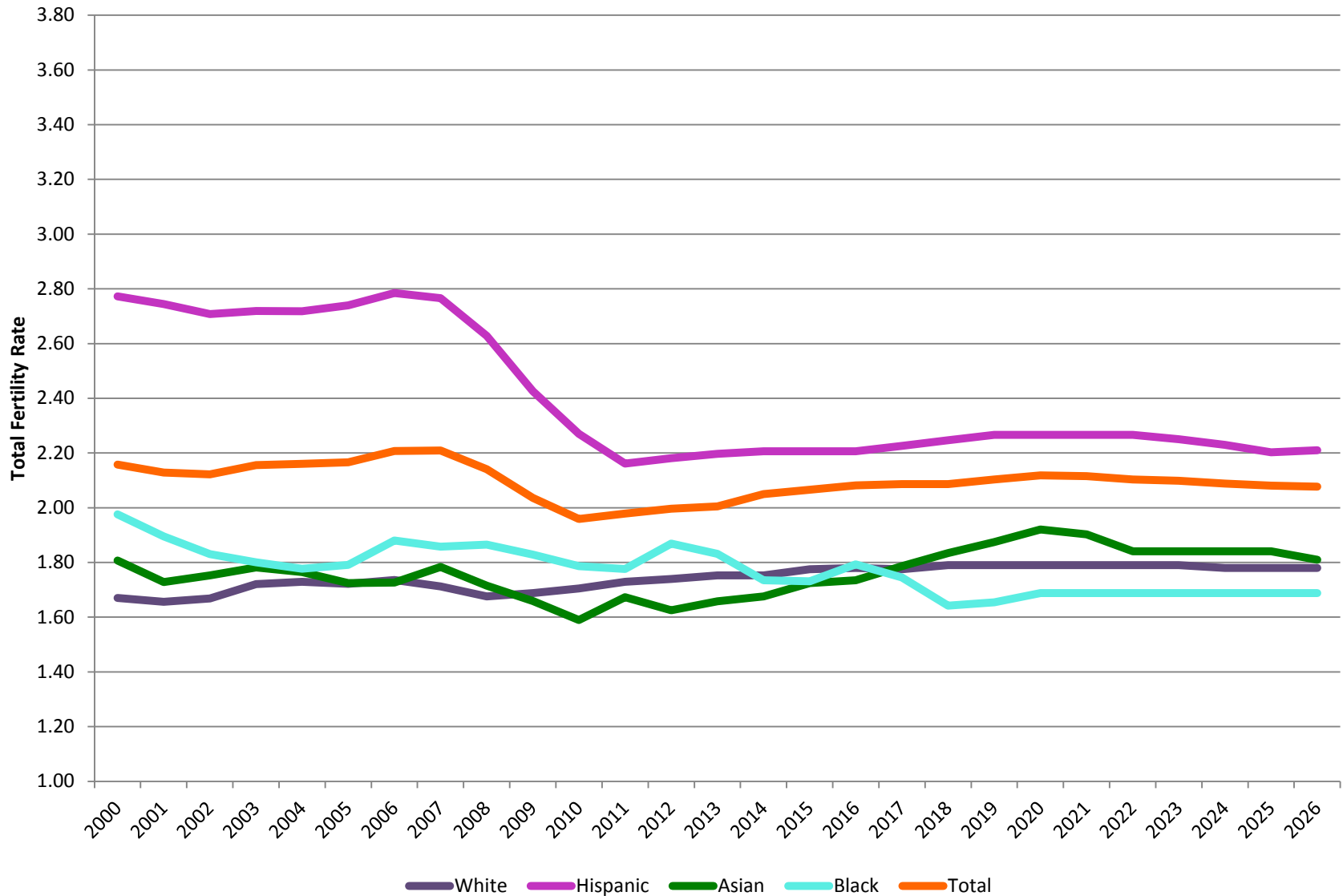
- Total population by county 2010-2050 in 5-year increments
- State population by 5-year age cohort by the same 5-year increments
- No Sex or Race detail is published
- Designed to provide more realistic short term numbers and provide a guide to what the current direction of the full projections might be

## 2006 Baseline Projections - Total Fertility Rate Assumptions



Source: *Population Projections for California and Its Counties 2000-2050, 2006 Baseline*, California Department of Finance, July 2007

## 2012 Interim Projections - Total Fertility Rate Assumptions



Source: *Interim Population Projections for California and Its Counties 2010-2050*, California Department of Finance. May 2012

# Differences in Migration Assumptions

## Net Migration per Year

Year	2006 Baseline Migration	Interim Migration
2010	146,954	62,048
2015	164,870	78,215
2020	164,870	88,225
2025	166,434	93,822
2030	166,434	104,008
2035	173,511	113,226
2040	173,511	124,866
2045	173,511	124,866
2050	169,997	138,285
Average	176,900	99,626

Source: *Interim Population Projections for California and Its Counties 2010-2050*, California Department of Finance. May 2012