



# The New American FactFinder (AFF)



# New American FactFinder

- Culmination of two-year effort featuring a complete overall redesign of AFF
  - Increases data access effectiveness for users
  - Guides users to their data without forcing them to become experts
  - Gives end users more functionality and flexibility
  - Addresses growing usage and data volume needs
  - Provides a platform that evolves over time, avoiding technology obsolescence

# New American FactFinder: Release 1 (January 18, 2011)

- New AFF redelivers enhanced core functionality of Legacy system
- Release 1 functionality includes
  - Improved search and navigation services
  - Table services
    - Basic table manipulations (e.g., sorting / filtering)
    - Transposition of rows and columns
  - Mapping services
    - Thematic mapping “on the fly” (only)
  - Basic embargo capability

## What's Next?

# Future Releases (and approximate release dates)

- Release 1.2 (May – August 2011)
  - Mapping upgrade
- Release 2 (July – October 2011)
  - Narrative profiles
  - Charting services
  - Enhanced Errata capability
  - Download as (.rtf)
  - Sort on multiple columns
  - Format for print, deep linking
  - Advanced Embargo capabilities
  - Ability to download spatial data

## What's Next?

# Future Releases (and approximate release dates)

- Release 3 (TBD)
  - Plans in progress
- Release 4 (May – June 2012)
  - Functionality for simple user-defined tables

# Census Bureau Home Page:

## www.census.gov

### U.S. Census Bureau

FAQs Subjects A to Z Help SEARCH:  GO

#### Redistricting Data

First Look at Local Data

New on the Site

Data Tools

American FactFinder

Jobs@Census

Catalog

Publications

Are You in a Survey?

About the Bureau

Regional Offices

Doing Business with Us

Related Sites

Follow us on Twitter

## 2010 RESIDENT POPULATION

# 308,745,538

Learn more about your state

- Data Map
- Animation
- Video
- News
- Director's Blog
- Census Blog

#### Read our Census Blogs

### Data Finders

#### Population Clocks

## U.S. 310,901,397

World 6,902,667,547

22:34 UTC (EST+5) Feb 27, 2011

#### Population Finder\*

\* Does not currently contain 2010 data

city/ town, county, or zip

or state

Select a state

#### Find An Area Profile with QuickFacts

Select a state to begin

Select a state

#### Latest Economic Indicators

- Advance Report on Durable Goods Manufacturers' Shipments, Inventories, and Orders
- New Home Sales

#### Economic Indicators

Select an indicator

Select an indicator

#### People & Households

[American Community Survey](#) · [Estimates](#) · [Projections](#) · [Housing](#) · [Income](#) | [State Median Income](#) · [Poverty](#) · [Health Insurance](#) · [International](#) · [Genealogy](#) · [Census 2000](#) · [More](#)

#### Business & Industry

[Economic Census](#) · [Get Help with Your Form](#) · [Economic Indicators](#) · [NAICS](#) · [Survey of Business Owners](#) · [Government](#) · [E-Stats](#) · [Foreign Trade](#) | [Export Codes](#) · [Local Employment Dynamics](#) · [More](#)

#### Geography

[Maps](#) · [TIGER](#) · [Gazetteer](#) · [More](#)

#### Newsroom

[Releases](#) · [Facts for Features](#) · [Minority Links](#) · [Multimedia Gallery](#) · [News Release Subscription](#) · [More](#)

#### Special Topics

[Fraudulent Activity & Scams](#) · [Census Bureau Data and Emergency Preparedness](#) · [Events Calendar](#) · [Training](#) · [Statistical Abstract](#) · [FedStats](#) · [USA.gov](#) · [Recovery Act at the Census Bureau](#)

### The NEW American FactFinder is now available!

The transition from the legacy American FactFinder to the NEW American FactFinder will continue through the fall of 2011. Data on the legacy FactFinder will be moved to the NEW FactFinder in the coming months [Frequently Asked Questions »](#)

The legacy American FactFinder will be discontinued in the fall of 2011.



for data from  
**Census 2010** (beginning in February 2011)  
and **Census 2000**

go to

[factfinder2.census.gov](http://factfinder2.census.gov)

Learn more about the New American FactFinder

For information about the release of data  
from the 2010 Census, see the  
[2010 Census Data Products](#)  
release schedule



for data from the  
**American Community Survey,**  
the **Economic Census,**  
and **Population Estimates**

go to

[factfinder.census.gov](http://factfinder.census.gov)



## Question & Answer Center

Read the [2010 Census Blog](#), connect with us on [Facebook](#), [Twitter](#) and [YouTube](#) to get more tips, or visit our [2010 Census site](#).

[Log In](#) | [Sign Up](#)

Answers

Ask a Question

My Stuff ▾

Advanced Search

znewaff

Search

Find the answer to your question

Results 1 - 10 of 23 for [znewaff](#)

### [New American FactFinder: Available Data Sets Updated](#)

When the NEW American FactFinder is released on January 18, 2011, the site will only have data from Census 2000 available. Starting with the 2010 Redistricting Data Summary File (PL 94- 171) all...

Date Updated: 02/09/2011

### [New American FactFinder: Census Tracts and Blocks Updated](#)

American FactFinder organizes data for over eight million different geographic areas. In order to properly organize such a large amount of data, the geographic search function is performed in a...

Date Updated: 02/09/2011

### [New American FactFinder: Factsheets Updated](#)

Factsheets are not available in the new American FactFinder. The same information and more can be found in the American Community Survey/Decennial Data & Demographic...

Date Updated: 02/09/2011

### [New American FactFinder: How do I find all the Census Tracts in a Place? New](#)

To find all Census Tracts within a City, Town, or County Subdivision, use the following steps: Open the Geographies Search option found on the left side of the Main or Search page. Use the text box...

Date Updated: 02/14/2011

### [New American FactFinder: Quick Introduction Updated](#)

American FactFinder allows users to search and analyze demographic and economic information about the nation and your communities using a variety of methods. They include: Keyword Search...

Date Updated: 02/09/2011

### [New American FactFinder: Large Downloads - many tables and/or many geographies Updated](#)

We are experiencing problems with large downloads. Until we can resolve the problem, please use the FTP site to process large downloads. You can download the 2010 Redistricting Data...

Date Updated: 02/09/2011



[MAIN](#)[SEARCH](#)[WHAT WE PROVIDE](#)[USING FACTFINDER](#)[English](#)[Español](#)

### Your Selections

"Your Selections" is empty

### Topics ?

### Geographies

(states, counties, places, ...)

### Population Groups

(race, ancestry, ...)

### Industry Codes

(NAICS, ...)

### Legacy American FactFinder

The following data are available on the legacy American FactFinder System:

- [2007 Economic Census](#)
- [2009 American Community Survey](#)
- [2009 Population Estimates](#)

### Load Query

Use Load Query to restore a previously saved query

[LOAD QUERY](#)

Your source for population, housing, economic, and geographic data



View [video tutorials](#) to help you get started using the NEW American FactFinder.

### Quick Start

Enter search term(s) and click 'GO' ?

topic or table name

geography (optional)

for

GO



topics



population groups



industries

Or use the options on the left to begin your search

### News and Notes

Feb 04, 2011

2010 Census Redistricting Data is now available! According to Public Law (P.L.) 94-171, we must provide redistricting data to the 50 states no later than April 1st of the year following the census. As a result, we are delivering the data state-by-state on a flow basis in February and March. Each table will provide summaries of population totals, as well as data on race, Hispanic origin and voting age for multiple geographies within the state, such as census blocks, tracts, voting districts, cities, counties and school districts. Click the more link to view a full list of the files. These files default to states that have already been released. [more »](#)

Feb 04, 2011

Click the more link for large Downloads of the 2010 Census Redistricting Summary File. [more »](#)

Jan 18, 2011



### U.S. Population Clock

18:57 UTC (EST+5) Feb 23, 2011

**310,875,485**

[more population clocks](#)

### Reference Maps

Reference Maps show selected geographic boundaries for an area along with orienting features, such as roads.

United States

GO

### Address Search



Find Census data by entering a [street address](#).

### Did you know?



1,233 is the number of locations producing chocolate and cocoa products in 2007

**Search** - Use the options on the left (search, topics, geographies, ...) to find the data you're looking for

## Your Selections

'Your Selections' is empty

## Search within Results for...

GO

## Topics ?

## People

- ☐ Basic Count/Estimate
- ☐ Age & Sex
- ☐ Age Group
- ☐ Disability
- ☐ Education
- ☐ Employment
- ☐ Income & Earnings
- ☐ Language
- ☐ Marital & Fertility Status
- ☐ Origins
- ☐ Population Change
- ☐ Poverty
- ☐ Race & Ethnicity
- ☐ Relationship
- ☐ Veterans

## Housing

- ☐ Year
- ☐ Product Type
- ☐ Document Type
- ☐ Data Type
- ☐ Compare Geography
- ☐ Program
- ☐ Survey
- ☐ Dataset

☐ Include archived products ?

## Geographies

(states, counties, places, ...)

Search Results: 1-25 of 4,441

per page: 25

Selected:



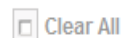
View



Download



Compare



Clear All



?

&lt; 1 2 3 4 5 &gt;

	ID	Title	Dataset	About
<input type="checkbox"/>	QT-PL	Race, Hispanic or Latino, Age, and Housing Occupancy: 2010	2010 Redistricting Data SF (PL 94-171)	
<input type="checkbox"/>	GCT-PL1	Race and Hispanic or Latino: 2010 - State -- Place	2010 Redistricting Data SF (PL 94-171)	
<input type="checkbox"/>	GCT-PL1	Race and Hispanic or Latino: 2010 - State -- County Subdivision	2010 Redistricting Data SF (PL 94-171)	
<input type="checkbox"/>	GCT-PL1	Race and Hispanic or Latino: 2010 - State -- School District	2010 Redistricting Data SF (PL 94-171)	
<input type="checkbox"/>	GCT-PL1	Race and Hispanic or Latino: 2010 - State -- American Indian Area/Alaska Native Area/Hawaiian Home Land	2010 Redistricting Data SF (PL 94-171)	
<input type="checkbox"/>	GCT-PL1	Race and Hispanic or Latino: 2010 - State -- Congressional District	2010 Redistricting Data SF (PL 94-171)	
<input type="checkbox"/>	GCT-PL1	Race and Hispanic or Latino: 2010 - State -- Place and (in selected states) County Subdivision	2010 Redistricting Data SF (PL 94-171)	
<input type="checkbox"/>	GCT-PL1	Race and Hispanic or Latino: 2010 - County -- County Subdivision and Place	2010 Redistricting Data SF (PL 94-171)	
<input type="checkbox"/>	GCT-PL1	Race and Hispanic or Latino: 2010 - State -- State Legislative District	2010 Redistricting Data SF (PL 94-171)	
<input type="checkbox"/>	GCT-PL1	Race and Hispanic or Latino: 2010 - County -- Census Tract	2010 Redistricting Data SF (PL 94-171)	
<input type="checkbox"/>	GCT-PL1	Race and Hispanic or Latino: 2010 - State -- County / County Equivalent	2010 Redistricting Data SF (PL 94-171)	
<input type="checkbox"/>	GCT-PL2	Population and Housing Occupancy Status: 2010 - State -- Congressional District	2010 Redistricting Data SF (PL 94-171)	
<input type="checkbox"/>	GCT-PL2	Population and Housing Occupancy Status: 2010 - County -- Census Tract	2010 Redistricting Data SF (PL 94-171)	
<input type="checkbox"/>	GCT-PL2	Population and Housing Occupancy Status: 2010 - State -- State Legislative District	2010 Redistricting Data SF (PL 94-171)	
<input type="checkbox"/>	GCT-PL2	Population and Housing Occupancy Status: 2010 - State -- American Indian Area/Alaska Native Area/Hawaiian Home Land	2010 Redistricting Data SF (PL 94-171)	

# Getting Started with American FactFinder2

## Your Selections

"Your Selections" is empty

## Topics ?

- ☒ People
- ☒ Housing
- ☒ Business and Industry
- ☒ Year
- ☒ Program
- ☒ Survey
- ☒ Product Type
- ☒ Document Type
- ☒ Data Set

☐ Include Archived Products

Geographies (States, Counties, Places, ...)

Population Groups (Race, Ancestry, ...)

Industry Codes (NAICS, ...)

Your source for population, housing, economic, and geographic data

## Quick Start

Enter search term(s) and click "GO" ?

topic or table name

geography (optional)

for

GO

☒ topics ☐ population groups ☐ industries

Or use the options on the left to begin your search.

## Data Available on Legacy American FactFinder

## 1. Quick Start

Self-guided: Find data by (a) entering a topic / table name or geography alone or (b) topic / table name and geography

## 3. Reference Maps

Select geography by using a map

308,554,629

more population clocks

## Reference Maps

Reference Maps show geographic boundaries and orienting features for an area.

United States

GO

## Address Search



Find Census data by entering a street address.

## Did you know?

There are 3,140 counties and county equivalents in the United States.

## 2. Topic Search

Expand selected category for additional pre-defined choices

## 4. Address Search

Find census data using an address

## 1. Your Selections

Lists the search words used to find your results; easily add and remove selections

## 4. Search Results

Select data to view or download

Use the options on the left (search, topics, geographies, ...) to find the data you're looking for.

### Your Selections

2005 ✕  
"Income" ✕  
Virginia ✕  
Norfolk City, Virginia ✕

[clear all selections](#)

### Search Within Results for ...

GO

### Topics

- ☐ People
- ☐ Housing
- ☐ Population and Housing Totals
- ☐ Business & Industry
- ☐ Year
- ☐ Program / Data Set
- ☐ Product Type

Geographies (States, Counties, Places, ...)

Population Groups (Race, Ancestry, ...)

Industry Codes (NAICS, ...)

## 3. Advanced Search Options

Geographies  
Population Groups  
Industry Codes

**2. Search within Results**  
Refine your search results by entering keywords

# Working with Search Results

Results: 1-25 of 95

Per Page: 25 50 75

Selected Items: [View](#) | [Download](#) | [Compare](#)

◀ 1 2 3 4 5 ▶

	ID	Title	Data Set	About
<input type="checkbox"/>	DP-3	Selected Economic Characteristics: 2005	2005 American Community Survey	<a href="#">i</a>
<input type="checkbox"/>	S1902	Mean Income in the Past 12 Months (in 2005 Inflation-Adjusted Dollars)	2005 American Community Survey	<a href="#">i</a>
<input type="checkbox"/>			2005 American Community Survey	<a href="#">i</a>
<input type="checkbox"/>			2005 American Community Survey	<a href="#">i</a>
<input type="checkbox"/>			2005 American Community Survey	<a href="#">i</a>
<input type="checkbox"/>	S2507	Financial Characteristics for Housing Units Without a Mortgage	2005 American Community Survey	<a href="#">i</a>
<input type="checkbox"/>	GCT2001	Median Household Income (In 2005 Inflation-Adjusted Dollars): 2005	2005 American Community Survey	<a href="#">i</a>
<input type="checkbox"/>				
<input type="checkbox"/>				
<input type="checkbox"/>				
<input type="checkbox"/>				
<input type="checkbox"/>	B19216	Aggregate Nonfamily Household Income in the Past 12 Months (in 2005 Inflation-Adjusted Dollars) by Sex of Householder by Living Alone by Age of Householder Universe: Nonfamily Households	2005 American Community Survey	<a href="#">i</a>
<input type="checkbox"/>	GCT2003	Percent of Households With Retirement Income: 2005 Universe: Households	2005 American Community Survey	<a href="#">i</a>
<input type="checkbox"/>	B19127	Aggregate Family Income in the Past 12 Months (in 2005 Inflation-Adjusted Dollars) Universe: Families	2005 American Community Survey	<a href="#">i</a>
<input type="checkbox"/>	C19101	Family Income in the Past 12 Months (in 2005 Inflation-Adjusted Dollars) Universe: Families	2005 American Community Survey	<a href="#">i</a>

[View](#) | [Download](#) | [Compare](#)

◀ 1 2 3 4 5 ▶



## Search

Use the options on the left (search, top

# Search Using Geography: Name

## Your Selections

2005

"Income"

Virginia

Norfolk City, Virginia

[clear all selections](#)

## Search Within Results for ...

GO

## Topics

Enter text to look for a geography name or use the geography filters

Geographic Selections are added to "Your Selections" box

Search Results are updated

Results: 26-50 of 622

Per Page: 10 25 50

Selected Items: View Download

◀ 1 2 3 4 5 ▶

	ID	Title	Data Set	About
<input type="checkbox"/>	DP-3	Selected Economic Characteristics: 2005	2005 American Community Survey	
<input type="checkbox"/>	81608	Married, Divorced, Widowed, and Never Married: 2005	2005 American Community Survey	

## Name

## Address

## Map

Enter a geography name or use the Geography Filter Options below

GO

## Your Geography Filters

No filters are selected

## Geography Filter Options

## Geographic type

☐ Nation (1)

☐ State (60)

☐ County (3,389)

☐ Place (27,286)

☐ County Subdivision (43,597)

☐ ZIP Code (43,668)

[more...](#)

☐ Geographies within another geography☐ Geographic vintage (year)

☐ Show Geographic Components (e.g., urban, rural)

☐ Show all geographic types

Select geographies to add to Your Selections

Results: 1-25 of 734,819

Per Page: 25 50 75

Geography Name	Geographic Type
<a href="#">United States</a>	Nation
<a href="#">Northeast Region</a>	Region
<a href="#">Midwest Region</a>	Region
<a href="#">South Region</a>	Region
<a href="#">West Region</a>	Region
<a href="#">New England Division</a>	Division
<a href="#">Middle Atlantic Division</a>	Division
<a href="#">East North Central Division</a>	Division
<a href="#">West North Central Division</a>	Division
<a href="#">South Atlantic Division</a>	Division
<a href="#">East South Central Division</a>	Division
<a href="#">West South Central Division</a>	Division
<a href="#">Mountain Division</a>	Division
<a href="#">Pacific Division</a>	Division
<a href="#">Alabama</a>	State
<a href="#">Alaska</a>	State
<a href="#">Arizona</a>	State
<a href="#">Arkansas</a>	State

# Search using Geography:

## Address

Name

Address

Map

Enter a street address, city and state

street address

city

state

zip

1265 Lombardi Avenue

Green Bay

Wisconsin

54307

GO

Geographies containing **1265 LOMBARDI AVE, GREEN BAY, WI, 54304:**  
**Select geographies to add to Your Selections**

Search for geographies by  
entering an address

Select geographies to add to  
"Your Selections"

**Results: 1 - 5 of 5**

Geography Name	Geography Type
Block 5010, Block Group 5, Census Tract 6, Brown County, Wisconsin	Block
Block Group 5, Census Tract 6, Brown County, Wisconsin	Block Group
Census Tract 6, Brown County, Wisconsin	Census Tract
Brown County, Wisconsin	County
Wisconsin	State

MAIN

SEARCH

WHAT WE PROVIDE

USING FACTFINDER

## Search

Use the options on the left (search, topics, geograph

## Your Selections

2005   
"Income"   
Virginia   
Norfolk City, Virginia 


[clear all selections](#)

Search Within Results for ...

Results: 28-50 of 622

Selected Items:  View  Download

◀ 1 2 3 4 5 ▶

	ID	Title	Data Set	About
<input type="checkbox"/>	DP-3	Selected Economic Characteristics: 2005	2005 American Community Survey	
<input type="checkbox"/>	DP-3	Selected Economic Characteristics: 2005	2005 American Community Survey	

Name Address Map

## Select Geographies

Select

states

from the map using one of the following  
selection tools:

## Legend

## Boundaries

— State  
2005 County  
2005 County Subdivision

## Features

Major Road  
Street  
Stream  
Waterbody

Items in grey text are not visible  
at this zoom level.

Boundaries and Features

Find a Location

Map Markers

# Search using Geography: Maps

Select a single  
geography by  
clicking on the map

Select multiple  
geographies by  
drawing a rectangle  
or circle on the map

Add the selected  
geographic areas to  
"Your Selections"





MAIN

SEARCH

WHAT WE PROVIDE

USING FACTFINDER

Spanish

## Search

Use the options on the left (search, topics, geographies, ...)



## Your Selections

2005   
"Income"   
Virginia   
Norfolk City, Virginia 

[clear all selections](#)

Results: 26-50 of 622

Selected Items:  [View](#) |  [Download](#)

	ID	Title	Data Set	About
<input type="checkbox"/>	DP-3	Selected Economic Characteristics: 2005	2005 American Community Survey	
<input type="checkbox"/>	DP-3	Selected Economic Characteristics: 2005	2005 American Community Survey	

Enter text to look for a population group or use the population group filters

Population Groups are added to "Your Selections"

Search Results are updated

Enter a population group name or code, or use the Population Group Filter Options below

GO

## Your Population Group Filters

Basic Race Categories [clear all filters](#)

## Population Group Filter Options

 Population Group Type  
Basic Race Categories (7)  
Race and Ethnic Groups (250)  
Ancestry Groups (85)  
Tribal Groups (39)  
Tribes (540)  
Country of Birth (152)

 Population Categories  
 Birth Continent  
 Race Combinations

Select population groups to add to Your Selections

Results: 1-7 of 7

Code	Population Group Name	Type
	<a href="#">American Indian and Alaska Native Alone</a>	Basic Race Category
	<a href="#">Asian Alone</a>	Basic Race Category
	<a href="#">Black or African American Alone</a>	Basic Race Category
	<a href="#">Hispanic or Latino</a>	Basic Race Category
	<a href="#">Native Hawaiian and Other Pacific Islander Alone</a>	Basic Race Category
	<a href="#">Some Other Race Alone</a>	Basic Race Category
	<a href="#">Two or More Races</a>	Basic Race Category
	<a href="#">White Alone</a>	Basic Race Category
	<a href="#">White Alone, not Hispanic or Latino</a>	Basic Race Category

Selected Items:  [View](#) |  [Download](#)

&lt;&lt; &lt; 1 2 3 4 5 &gt; &gt;&gt;

# Search using Industry Codes

## Search

Use the options on the left (search, topics, geographies, ...) to find the data you're looking for.

**Your Selections**  
2005 ✕  
Income ✕  
Virginia ✕  
Norfolk City, Virginia ✕  
[clear all selections](#)

**Search Within Results for ...**

**Topics** ▶

**Geographies (States, Counties, Places, ...)** ▶

**Population Groups (Race, Ancestry, ...)** ▶

**Industry Codes (NAICS, ...)** ▼

**Results: 26-50 of 622**  
Selected Items: [View](#) | [Download](#)  

	ID	Title	Data Set	About
<input type="checkbox"/>	DP-3	<a href="#">Selected Economic Characteristics: 2005</a>	2005 American Community Survey	
<input type="checkbox"/>	DP-3	<a href="#">Selected Economic Characteristics: 2005</a>	2005 American Community Survey	

**Per Page: 25 50 75**  
1 2 3 4 5 ▶

Enter an industry, product, or commodity name or code, or use the Industry Code Filter Options below.

**Your Industry Code Filters**  
"electronic circuits" ✕  
[clear all filters](#)

**Industry Code Filter Options**  
☒ **Code Type**  
NAICS (North American Industry Classification System) (23000)  
Products and Services (12345)  
Commodity Codes (12345)  
Materials and Fuels Consumed (540)  
☐ **Year**  
☐ **Sector**  
☐ **Sub-Sector**  
☐ **Commodity Group**

**Select industry codes to add to Your Selections**  
**Results: 1-8 of 8**  

Code	Description	Code Type	Year	About
001900B4	<a href="#">Electronic components and accessories (123)</a>	Materials and Fuels Consumed	2002	
001900B8	<a href="#">Other comps./accessories for electronic circuitry, exc. tubes (123)</a>	Materials and Fuels Consumed	2002	
334417A	<a href="#">Printed memory boards for electronic circuitry (123)</a>	Products and Services	2002	
334417A1	<a href="#">Printed circuit assemblies, loaded boards, and modules (123)</a>	Products and Services	2002	
334417D	<a href="#">Other connectors for electronic circuitry, including parts (123)</a>	Products and Services	2002	
334417D1	<a href="#">Other connectors for electronic circuitry, including parts (123)</a>	Products and Services	2002	
334417D100	<a href="#">Other connectors for electronic circuitry, including parts (123)</a>	Products and Services	2002	
334418	<a href="#">Printed circuit assembly (electronic assembly) mfg (123)</a>	NAICS	2002	

- Enter text to look for an industry code or use the industry code filters
- Industry Codes are added to "Your Selections"
- Search Results are updated



# View a Table

[MAIN](#) [SEARCH](#) [WHAT WE PROVIDE](#) [USING FACTFINDER](#)

## Results

Click 'Back to Search' to select other tables or geographies.

[← BACK TO SEARCH](#)Table ID  
C06003

**Place of Birth by Sex in the United States**  
**Universe: Total Population in the United States** ⓘ  
**2005-2007 American Community Survey 3-Year Estimate**

Table View



Map View



Actions:

[Modify Table](#)[Bookmark](#)[Download](#)[Create a Thematic Map](#)[View Table Notes](#)

	Alabama		Florida		Georgia		South Carolina	
	Estimate	Margin of Error	Estimate	Margin of Error	Estimate	Margin of Error	Estimate	Margin of Error
Total:	4,585,900	*****	18,014,927	*****	9,331,515	*****	4,330,933	*****
Male	2,218,544	+/-1,679	8,841,365	+/-2,036	4,587,486	+/-2,841	2,107,584	+/-1,360
Female	2,367,356	+/-1,679	9,173,562	+/-2,035	4,744,029	+/-2,841	2,223,349	+/-1,360
Born in state of residence:	3,261,251	+/-12,088	6,058,029	+/-22,048	5,218,892	+/-17,841	2,631,604	+/-11,997
Male	1,569,734	+/-6,922	3,020,525	+/-13,713	2,538,943	+/-11,231	1,268,275	+/-6,724
Female	1,691,517	+/-7,274	3,037,504	+/-14,345	2,679,949	+/-10,745	1,363,329	+/-7,544
Born in other state in the United States:	1,161,504	+/-10,635	8,065,826	+/-20,932	3,166,845	+/-18,025	1,480,072	+/-12,079
Male	563,720	+/-6,155	3,916,417	+/-12,571	1,537,424	+/-10,503	721,823	+/-6,867
Female	597,784	+/-6,842	4,149,409	+/-14,706	1,629,421	+/-10,584	758,249	+/-7,603
Native; born outside the United States:	32,355	+/-2,201	521,324	+/-9,938	104,496	+/-3,743	37,614	+/-1,932
Male	17,135	+/-1,485	254,102	+/-5,177	53,067	+/-2,776	19,207	+/-1,500
Female	15,220	+/-1,328	267,222	+/-6,555	51,429	+/-2,593	18,407	+/-1,253
Foreign born	130,790	+/-3,766	3,369,748	+/-17,842	841,282	+/-10,234	181,643	+/-4,796

Source: U.S. Census Bureau, 2005-2007 American Community Survey

View your selected search results

Bookmark the data for future use

Print the data

Download the data in multiple formats

Excel

Comma-Delimited

PDF

## Customize a Table

MAIN

SEARCH

WHAT WE PROVIDE

USING FACTFINDER

English Español

## Results:

Click 'Back to Search' to change geographies or industries.

← BACK TO SEARCH

B01001

SEX BY AGE

Table View

Map View

Chart View

Actions:



Hide Table Tools



Bookmark



Download



Create Thematic Map

Table Tools:



Reset Table



Show Hidden Rows/Columns



Transpose Rows/Columns

Click 'Back to Search' to change geographies or industries.

Legend:

show/hide  
rows and columnscollapse/expand  
data categoriesrearrange  
columns

View Table Notes

		Alabama		Alaska		Arizona	
		Estimate	Margin of Error	Estimate	Margin of Error	Estimate	Margin of Error
		<input checked="" type="checkbox"/>		<input checked="" type="checkbox"/>		<input checked="" type="checkbox"/>	
Total	<input checked="" type="checkbox"/>						
Total	<input checked="" type="checkbox"/>	4,442,558		641,724		5,829,839	
Male	<input checked="" type="checkbox"/>						
Total	<input checked="" type="checkbox"/>	2,142,901	+/-3,564	325,699	+/-1,891	2,902,933	+/-2,476
Under 5 years		<input checked="" type="checkbox"/>	+/-1,940	24,914	+/-1,224	236,015	+/-1,475
5 to 9 years		<input checked="" type="checkbox"/>	+/-5,256	25,801	+/-1,767	216,755	+/-6,132



Name

Address

Map

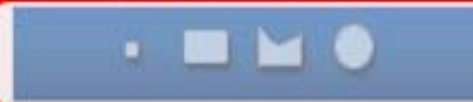
# Create a Reference Map

Select Geographies ?

Select

State

from the map using one of the  
following selection tools:



Legend

Boundaries

- State
- '08 County

Features

- Street
- Stream/Waterbody

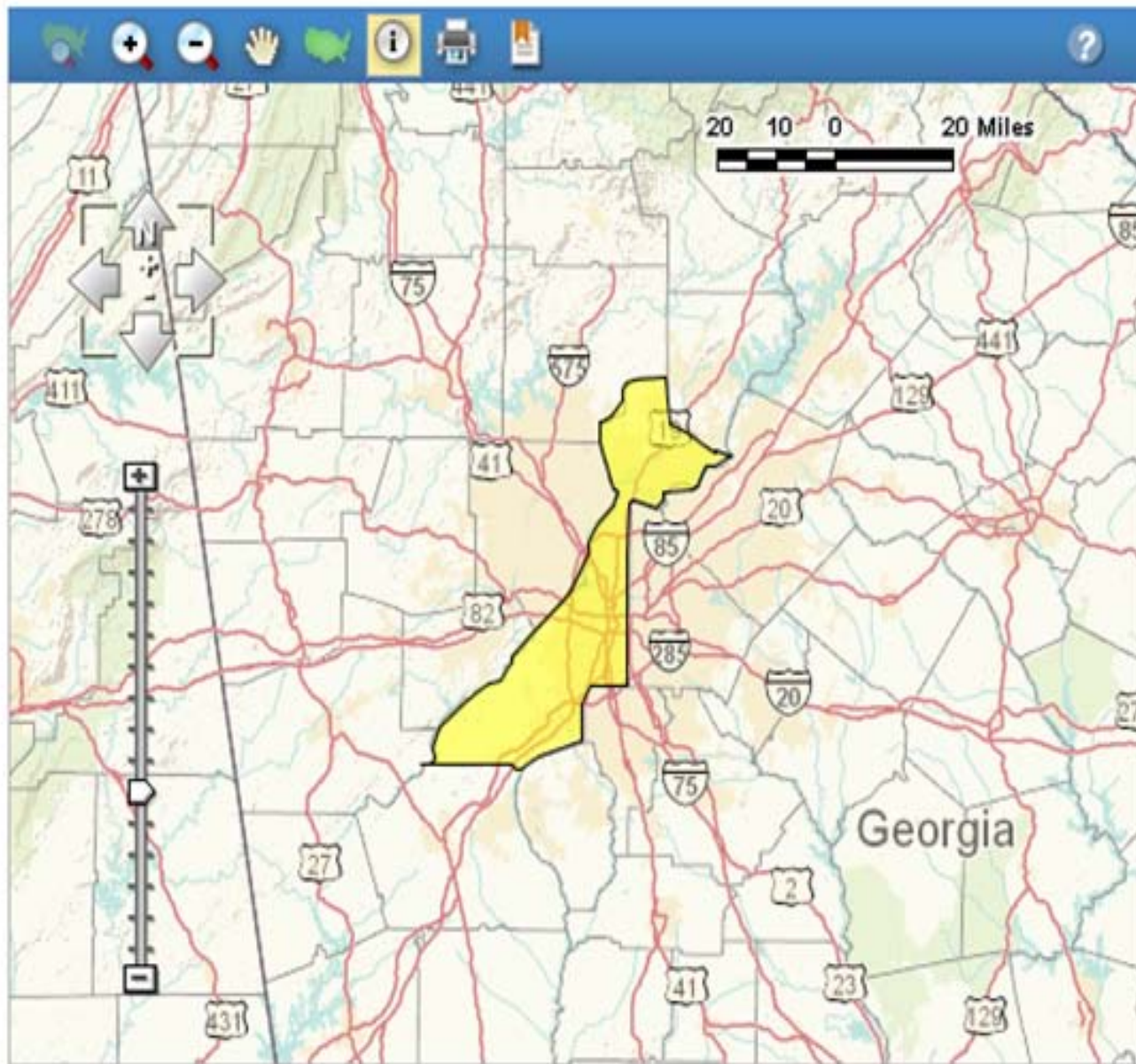
Your Selections

- Your Selections

Items in grey text are not visible at this  
zoom level

Modify the map using the options below:

Boundaries and Features



# Map Tools

Name

Address

Map

Select Geographies ?

Select

State

from the map using one of the  
following selection tools:

Legend

Boundaries

- State
- '08 County

Features

- Street
- Stream/Waterbody

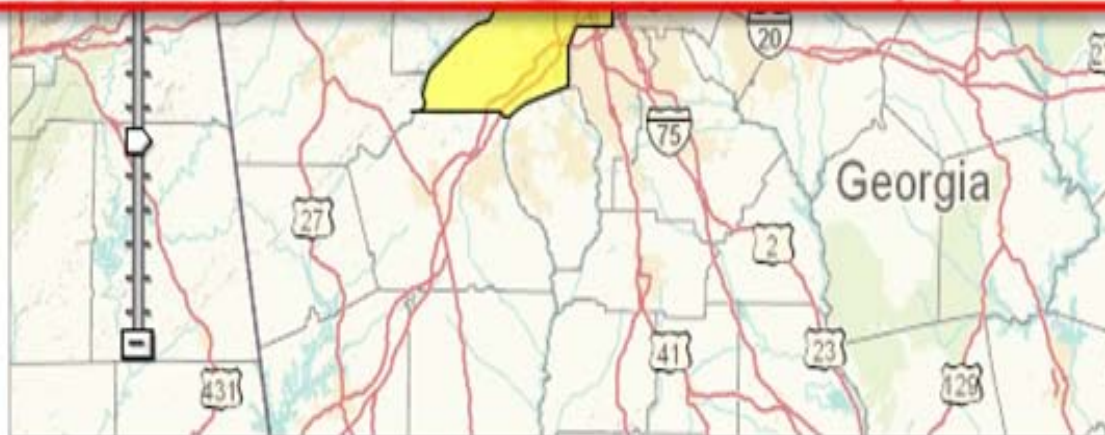
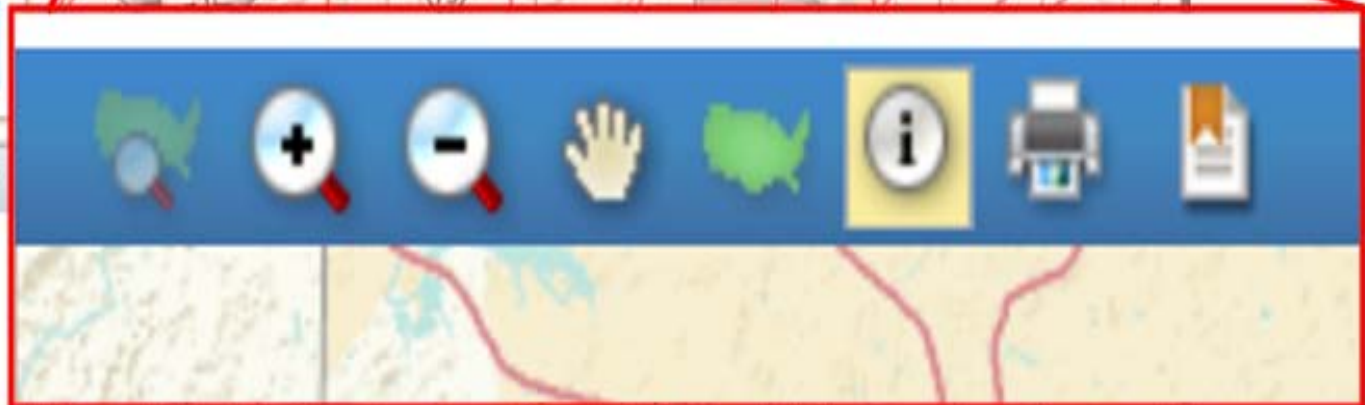
Your Selections

 Your Selections

Items in grey text are not visible at this  
zoom level

Modify the map using the options below:

Boundaries and Features





## Results

Click 'Back to Search Results' to select other tables or products.

◀ BACK TO SEARCH RESULTS

C06003

Place of Birth by Sex in the United States - Universe: Total  
2005-2007 American Community Survey 3-Year Estimates

Table View

Map View

Chart View

Actions:

 [Select a Data Value to Map](#)



[Bookmark](#)



[Download](#)

Thematic Map of Estimate; Male; Born in state of residence  
Geography: by State

 [View Notes](#)

Legend

Data Classes and Colors

Color range (select the first and last colors):



Transparency:

0  100

Number of classes:

5

Classing method:

User Defined

Define classes: (classes range from 1,268,275 to 3,029,525 persons)

1	1268275	-	
2		-	
3		-	
4		-	
5		-	3029525

GO

Boundaries and Features

Find a Location

Map Markers

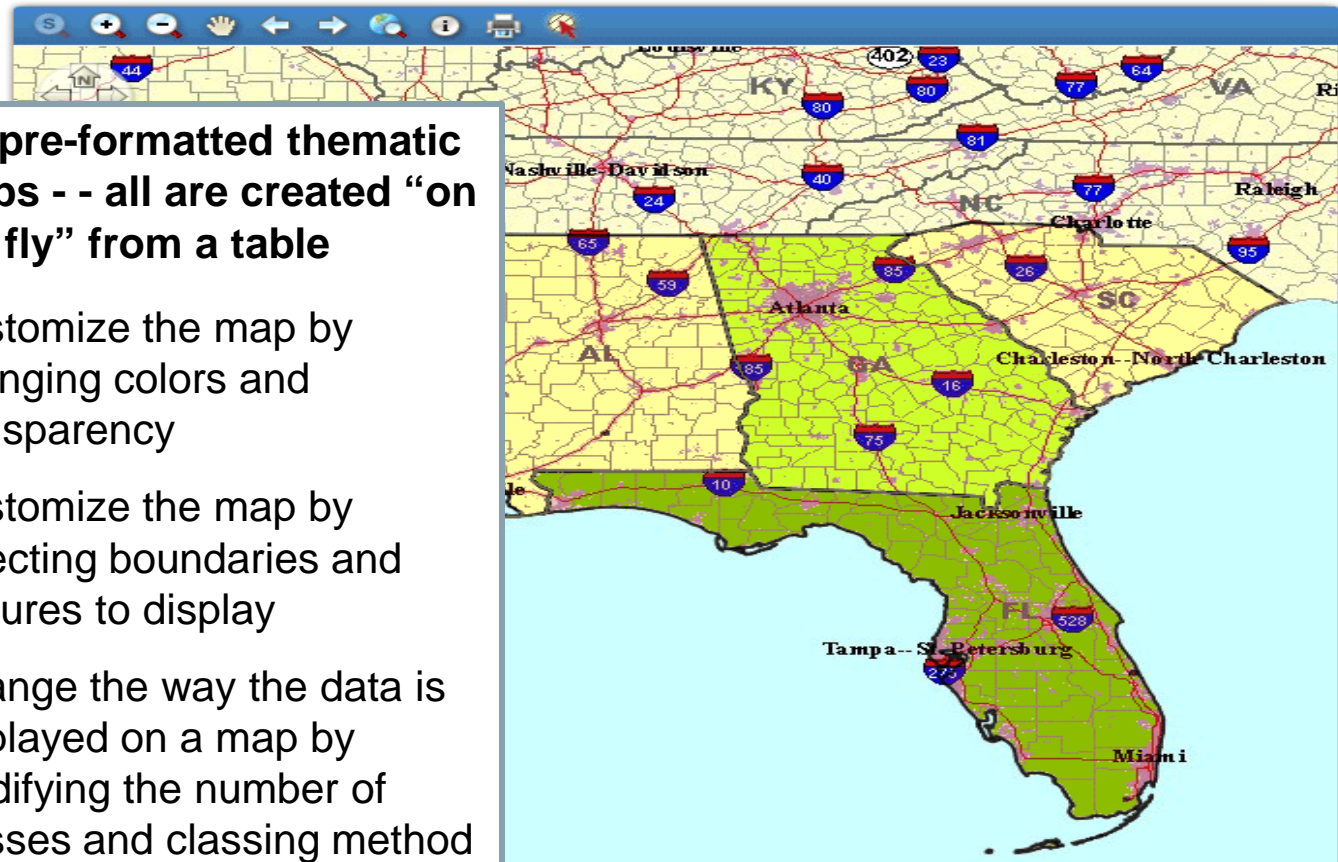
No pre-formatted thematic maps - - all are created “on the fly” from a table

Customize the map by changing colors and transparency

Customize the map by selecting boundaries and features to display

Change the way the data is displayed on a map by modifying the number of classes and classing method

# Create a Thematic Map





# Summary:

## Tools & Capabilities

### Manage Rows and Columns (Modify Table)

Collapse / Expand

Hide Rows and Columns

Filter Rows

Show Hidden Rows / Columns

Transpose Rows / Columns

Reset Table

### Bookmark a Product

Bookmark” a product from the  
Search Results or Data Product  
Display page

### Save/Load a Query

Save your search query for  
future use

### Download Data Products

Available formats:

- Database-compatible
  - (.csv) or (.xls)
- Presentation-ready
  - (.xls) or (.pdf)

### Print a Product

Print a data product (table or  
map) from the system using your  
Internet browser print capability

## Summary:

# Products and Availability (Legacy AFF)

- Online through Fall 2011
  - American Community Survey
    - All products since 2005
  - Population Estimates
    - All products since 2006
  - Economic programs
    - 1997, 2002, 2007 Economic Census
    - 2003-2009 Annual Survey of Manufactures
    - 2004-2008 County Business Patterns
    - 2004-2008 Nonemployer Statistics



## Summary:

# Products and Availability (New AFF)

- Now
  - 2000 Census
  - 2008 Population Estimates
- February – March 2011
  - 2010 Census Redistricting Data (P.L. 94-171 Summary File)
- April 2011
  - National Summary File of Redistricting Data
    - Down to American Indian, Alaska Native, and Native Hawaiian areas

## Summary:

# Products and Availability (New AFF)

- Late Spring / early Summer 2011
  - ACS 2005-2008 all products
  - Economic Census 2002
  - Annual economic surveys
- Mid / late Summer 2011
  - Economic Census 2007
  - ACS 2009 all products
- Fall 2011
  - Sunset of Legacy American FactFinder





Further questions . . .

Linda Clark

Information Services Specialist

[linda.clark@census.gov](mailto:linda.clark@census.gov)

425-908-3060

Seattle Regional Census Center  
Partnership & Data Services  
19820 North Creek Parkway  
Bothell, WA 98011

# Thank you!