

New Baseline Projection Series

State Data Center Meeting

November 6, 2024



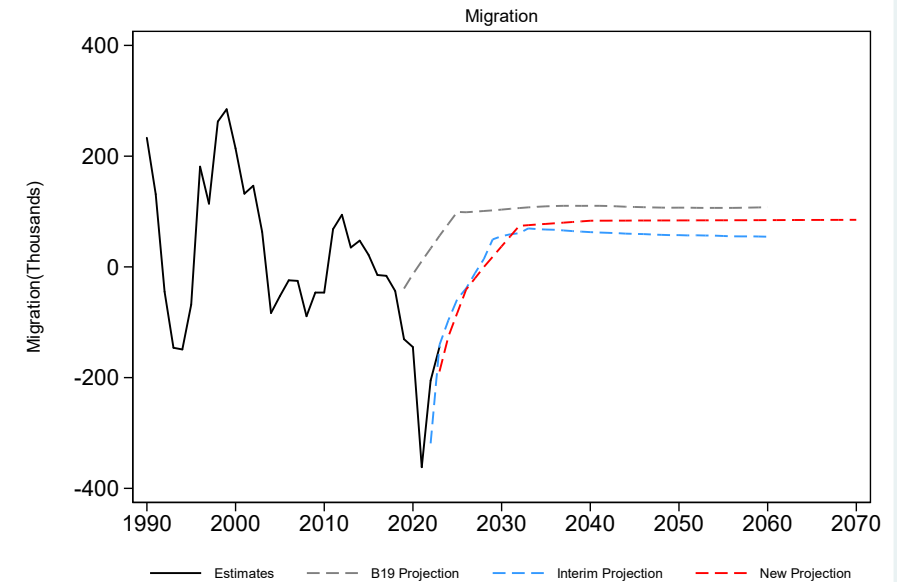
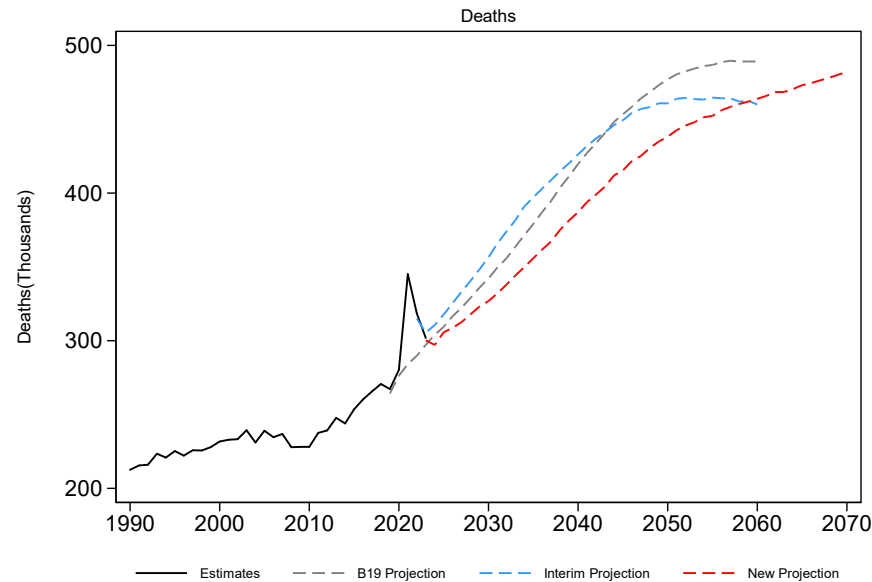
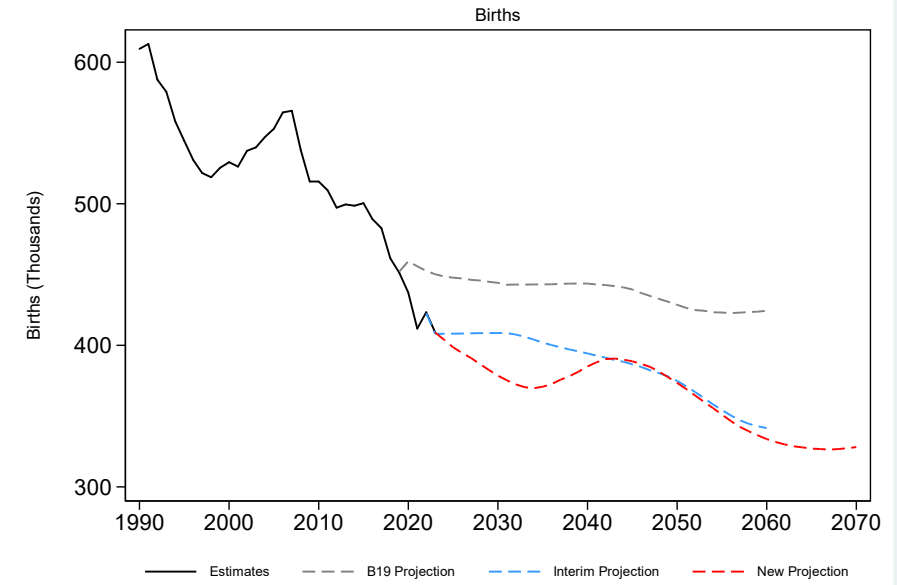
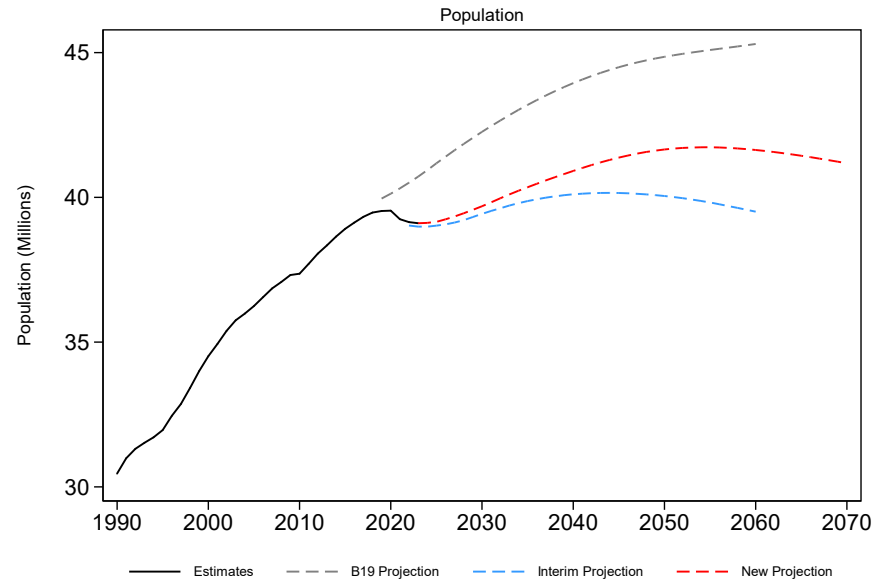
Walter Schwarm
Chief Demographer
California Department of Finance

California Population and Components: B19, Interim, B23

Population growth is projected to slow to an average 0.13% per year (down from B19 (0.5%) but up from the Interim (0.11%) per year). California population peaks at 41.7 million in 2055 (compared to 40.2 million in 2044 for the Interim) and experiences slight declines through the end of the projection thereafter

The projection reflects both:

- Return to positive growth in 2023
- Domestic Migration returning to 2014-18 levels of -100,000 net loss
- Increases in Foreign immigration to ~210,000
- Fewer births, 1.3 TFR rather than 1.5 TFR as the floor
- Slowing life expectancy gains vs. B19, but better than Interim (Pandemic accelerated deaths)



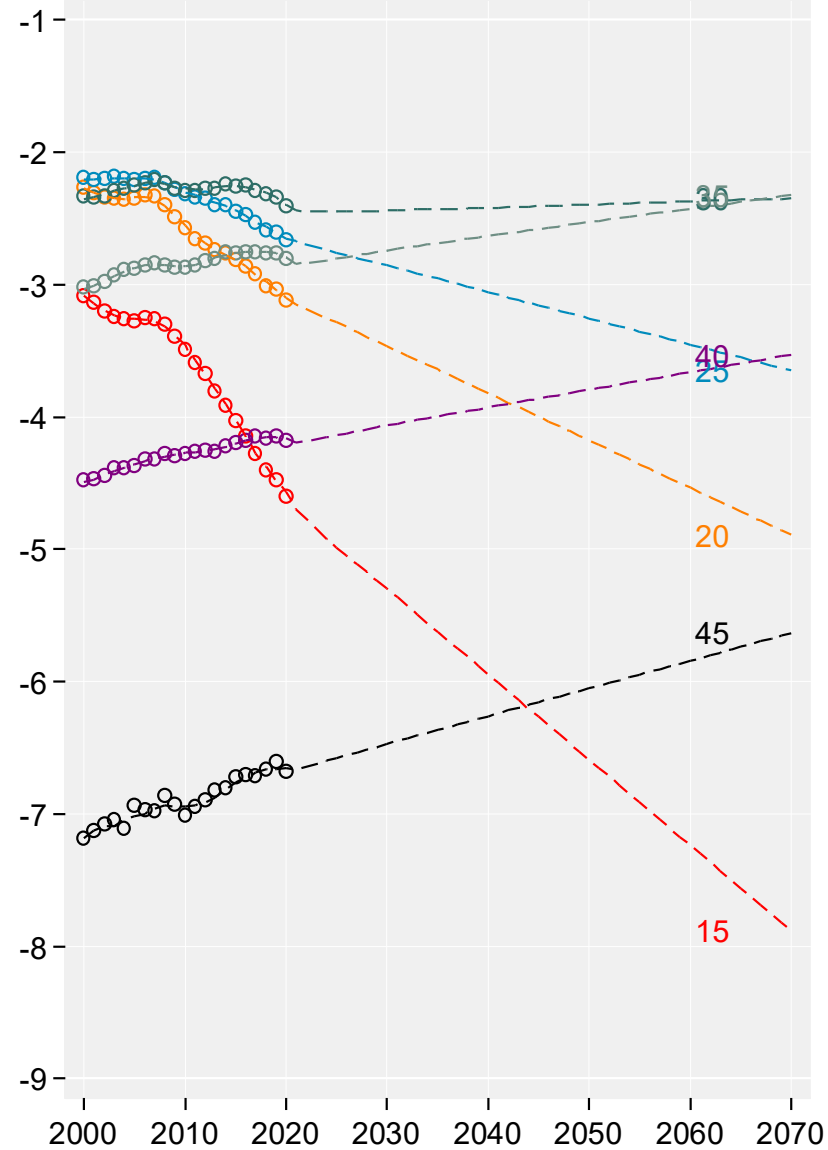
Total Fertility Rate

Analysis of the data suggest that birth rates are declining for women under age 30 and rising for those above 30, especially at ages 35-40 (these exceed 20-24 and 30-34 by the end of the forecast window).

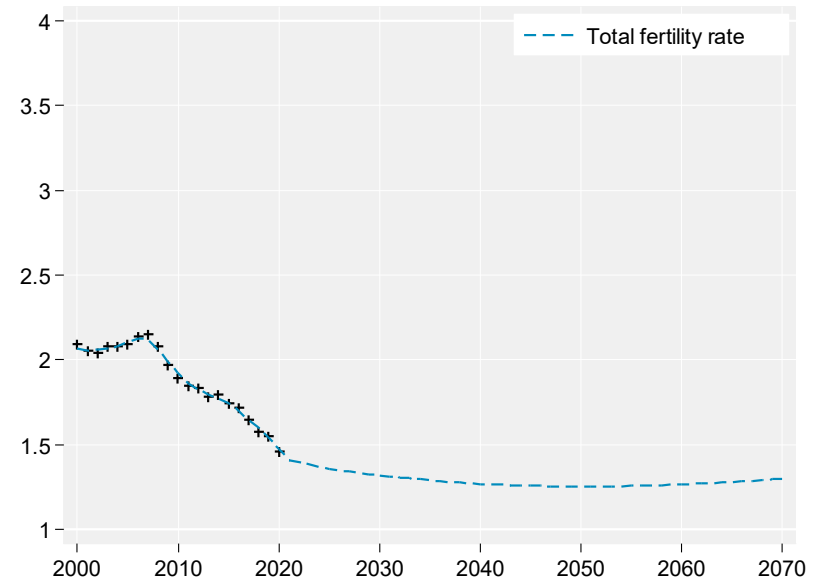
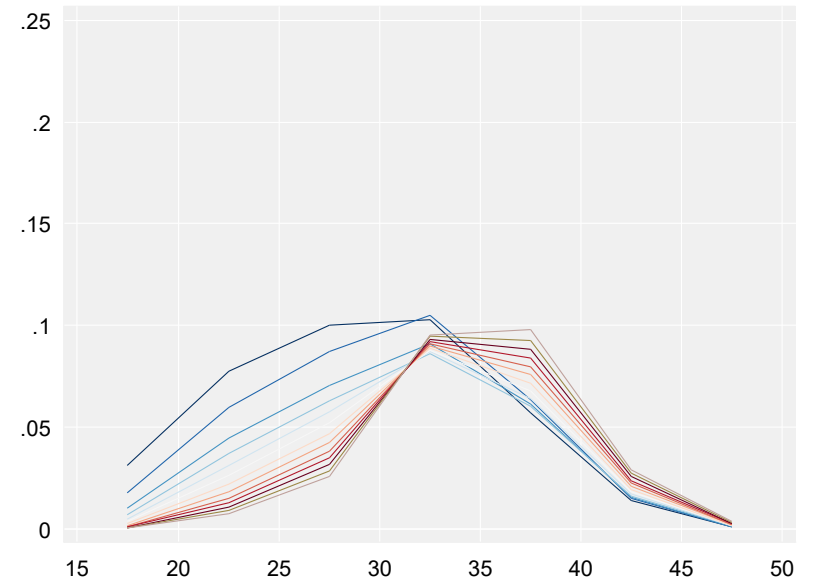
Our new series projects a slightly faster rate of change compared to the previous series beginning at a point already below 400,000.

This level of fertility (1.3 TFR) would put California in the company of European but still higher than some Asian ones.

Age specific fertility rates



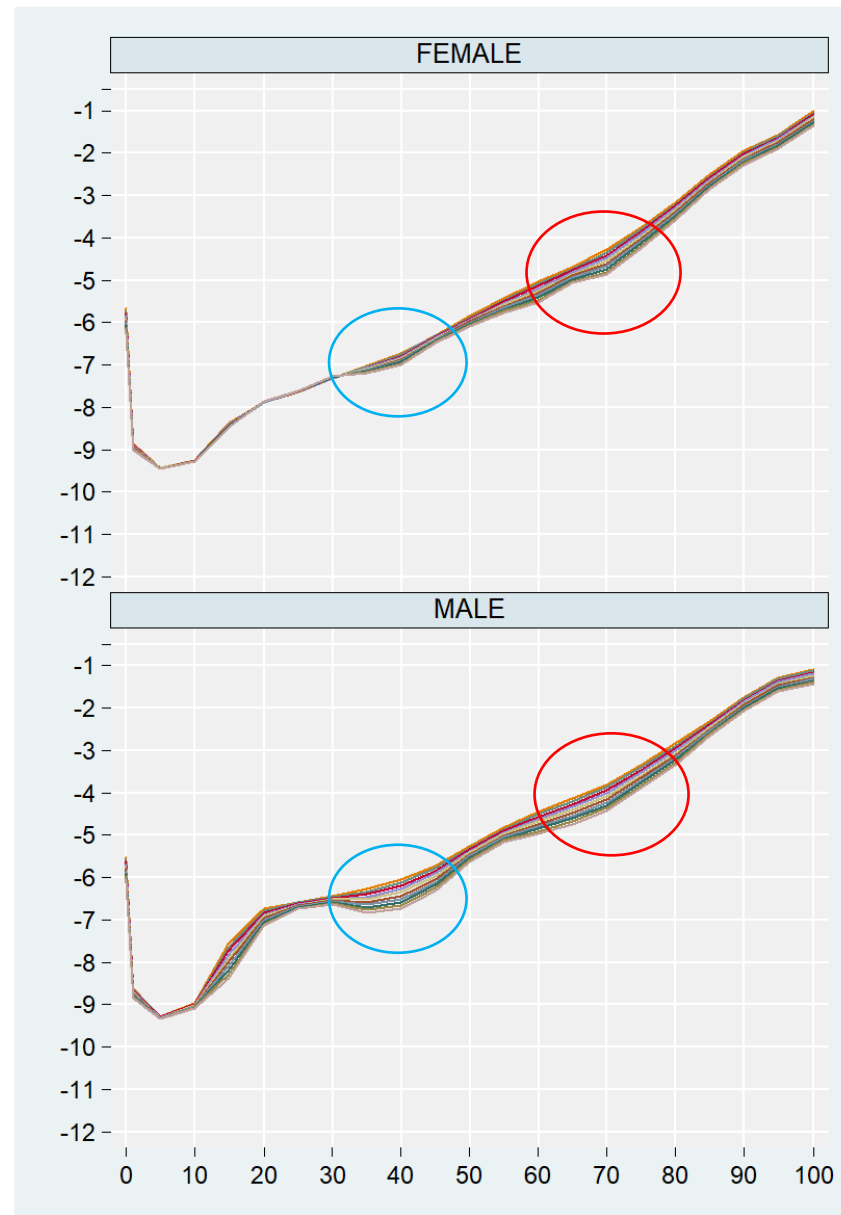
CALIFORNIA



Life Expectancy

The Interim series projected lower life expectancy gains in the future. That translated into more deaths, which slowed population growth. In the short run this is driven by **COVID-19** as an endemic and continued **deaths of despair** (elevated suicide rates and fentanyl overdoses) particularly among men.

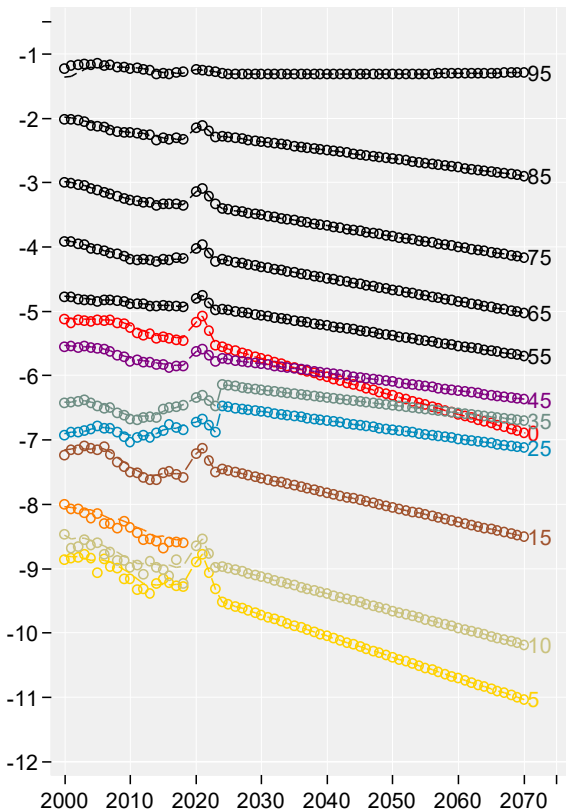
The new series sees an improvement in these areas with fewer COVID-19 deaths and a lessening of the deaths of despair.



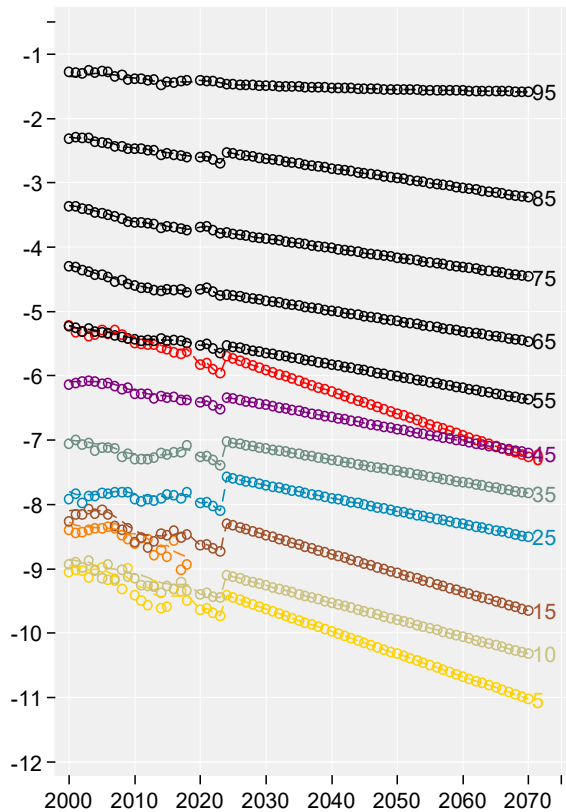
Interim

B23 Mortality

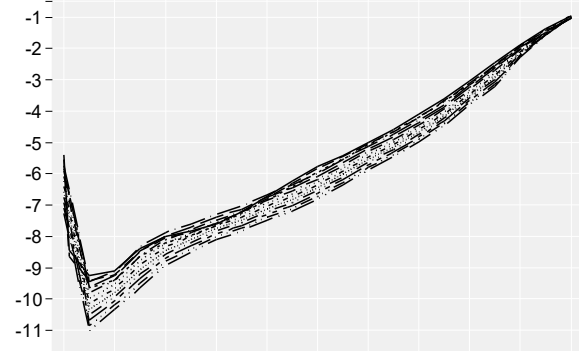
Men



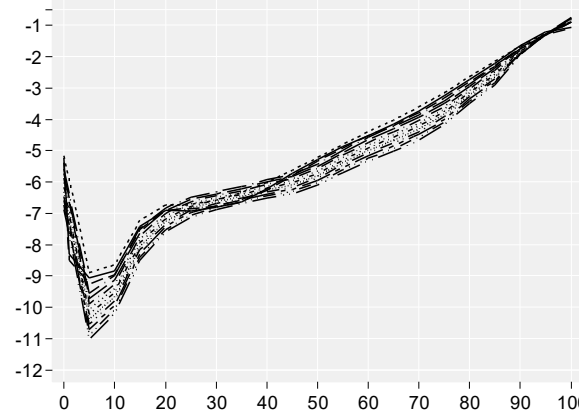
Women



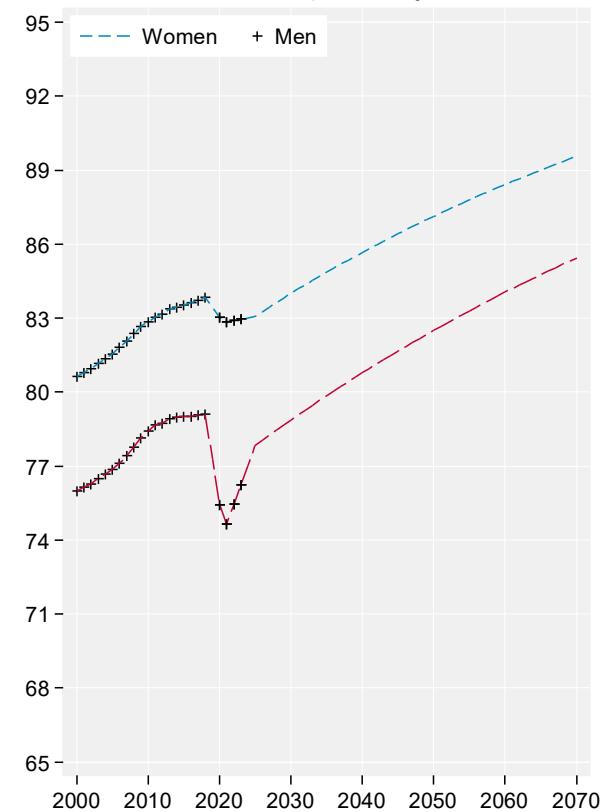
FEMALE



MALE



Life expectancy



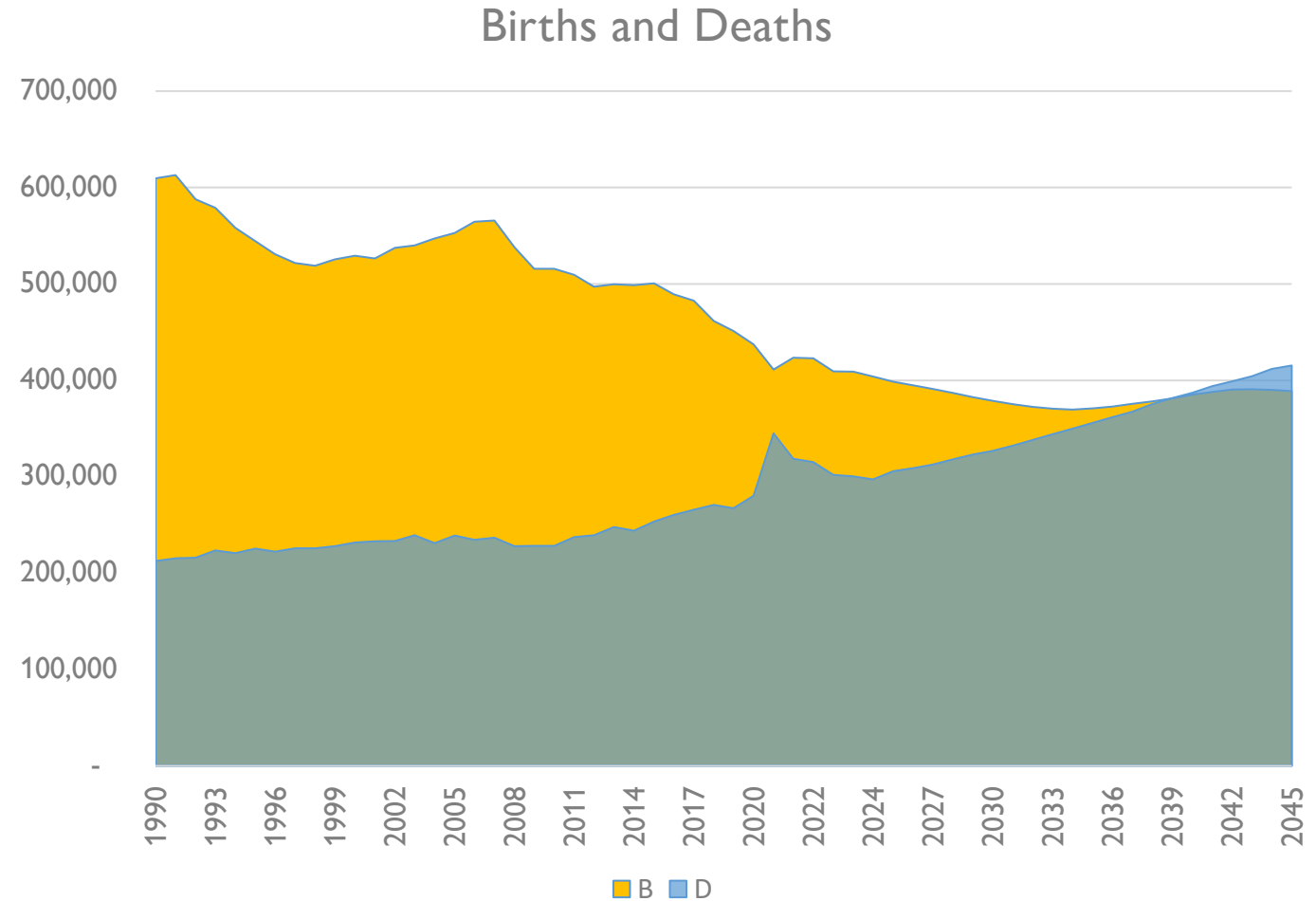
CALIFORNIA

Natural Increase

The Interim series had California experiencing natural decrease (deaths exceed births) in 2041.

In contrast, the new projection series experiences natural decrease earlier in 2039. This is largely the result of lower fertility assumptions. Migration and age-structure of the population continue to support similar levels of births throughout the remainder of the projection.

Natural decrease is projected to remain around -85,000 on average from 2045-2070

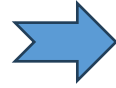
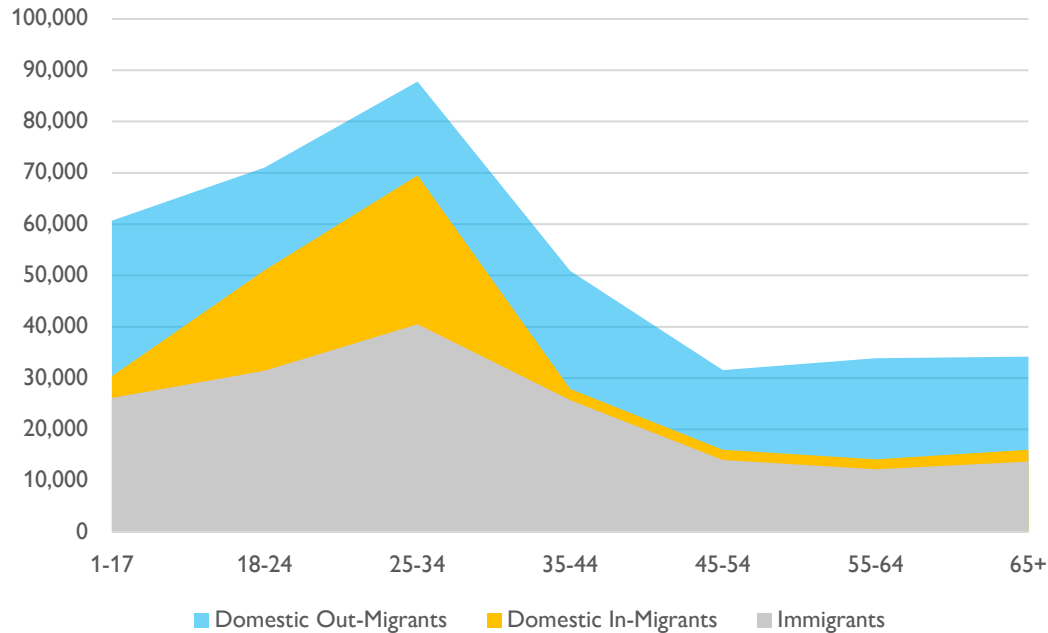


Migration

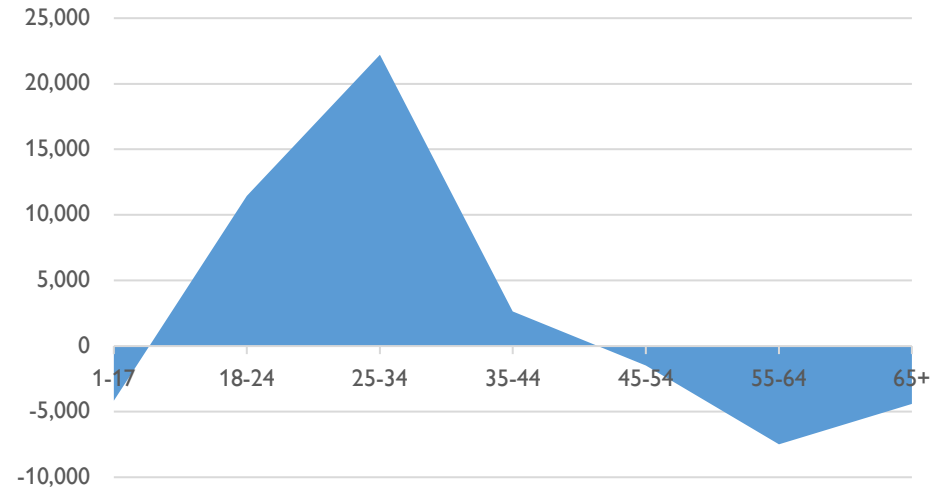
A pre-pandemic 10-year lookback window was used to set long-run average values or migration for the state and counties.

For California this yields an average total net migration of 79,000 persons comprised of -101,000 Net Domestic and 180,000 Net Immigrants when fully allowed to drive the series from 2032 onward.

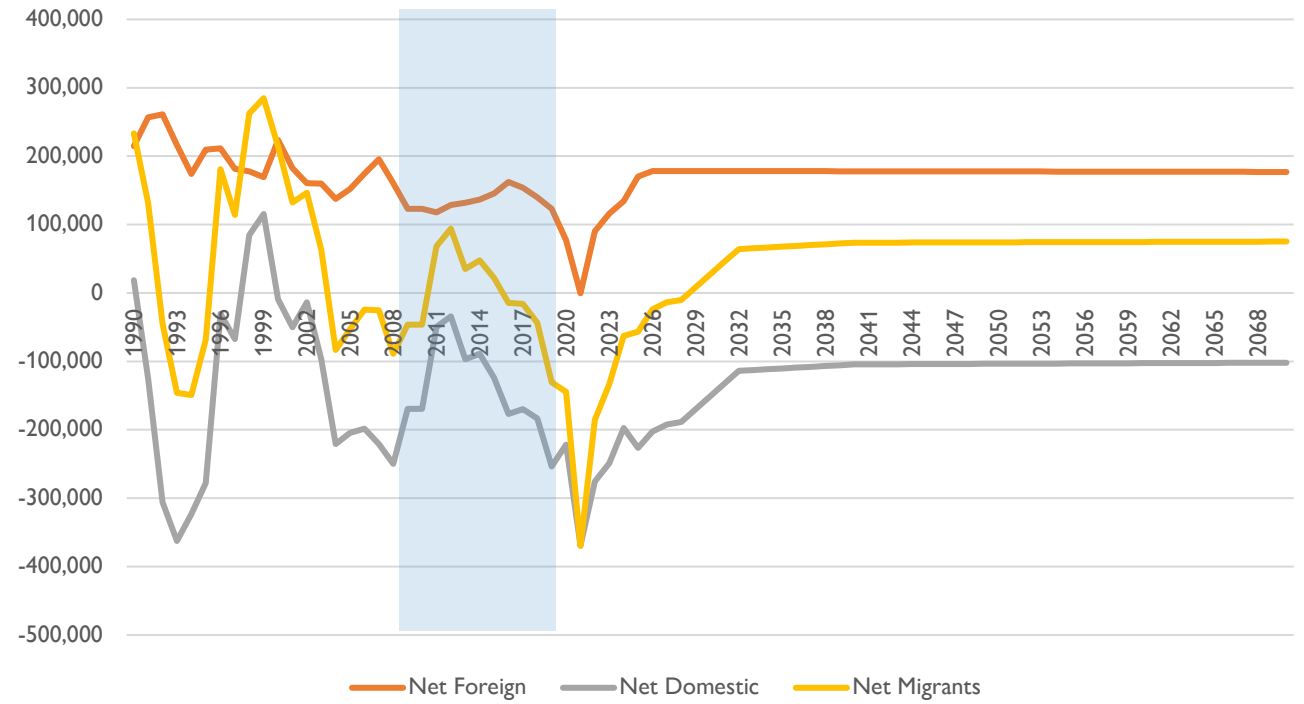
Age Structure Migration



Total Net Migration



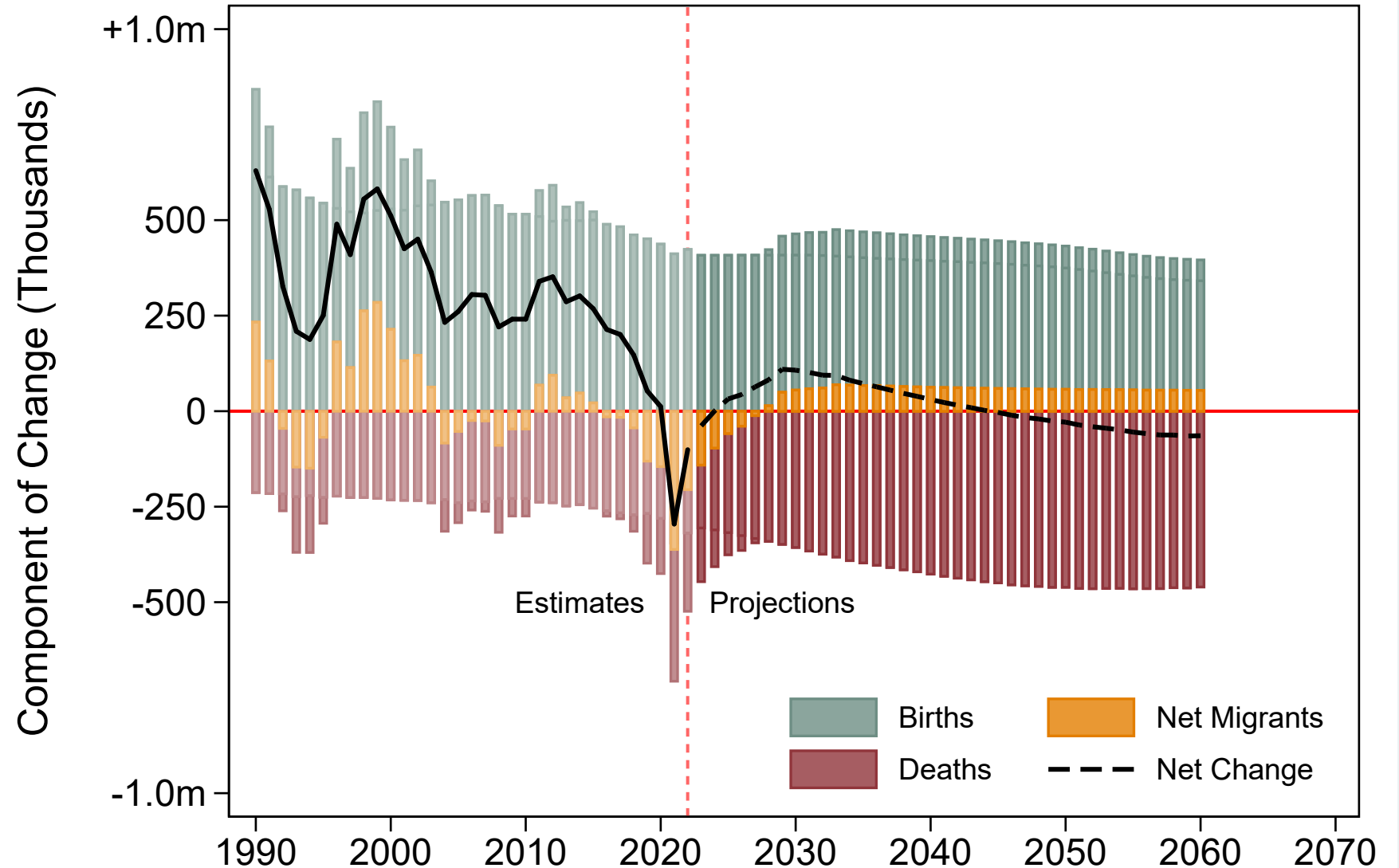
Net Migration: Foreign, Domestic, and Total



Components

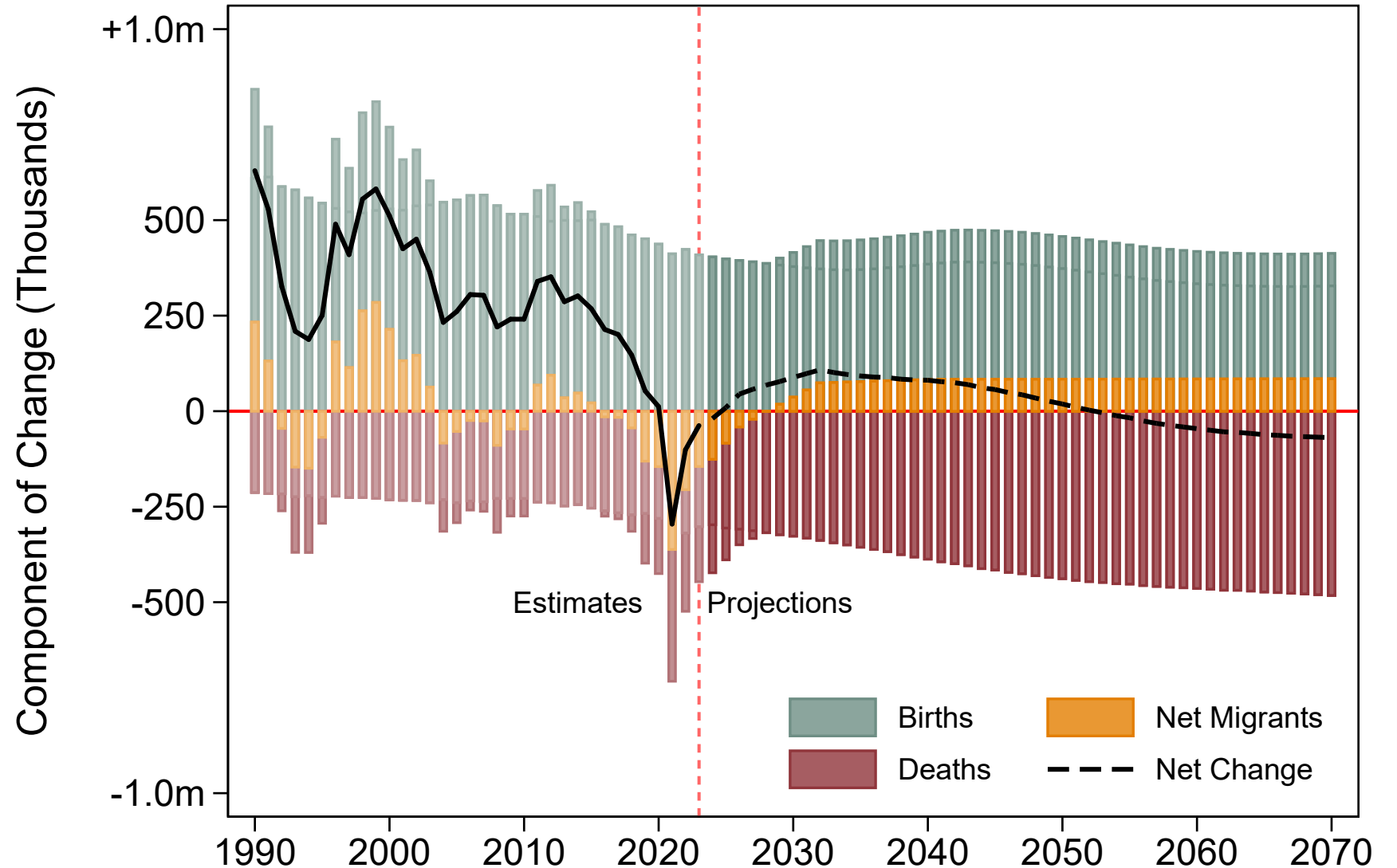
The Interim series had California experiencing natural decrease (deaths exceed births) in 2041. With lower migration and higher mortality, the state was projected to start losing population by 2044.

Interim



Components

In contrast in the new projection series while natural decrease starts earlier in 2039. This is largely the result of lower fertility. Higher levels of migration as well as increases in life expectancy keep California's growth rate positive until 2055.



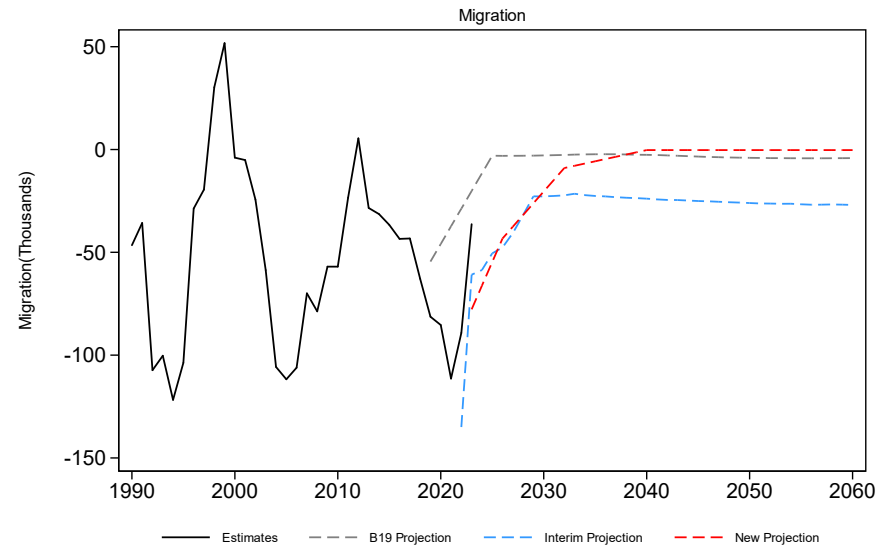
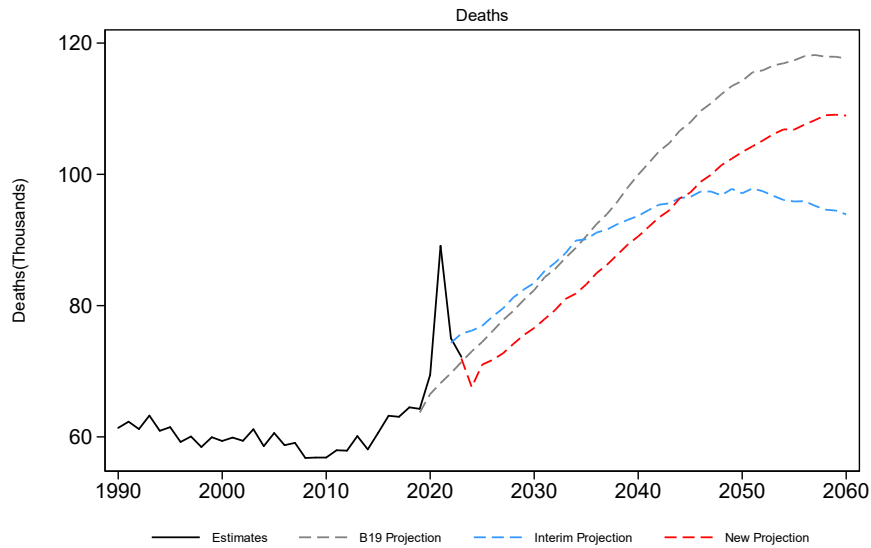
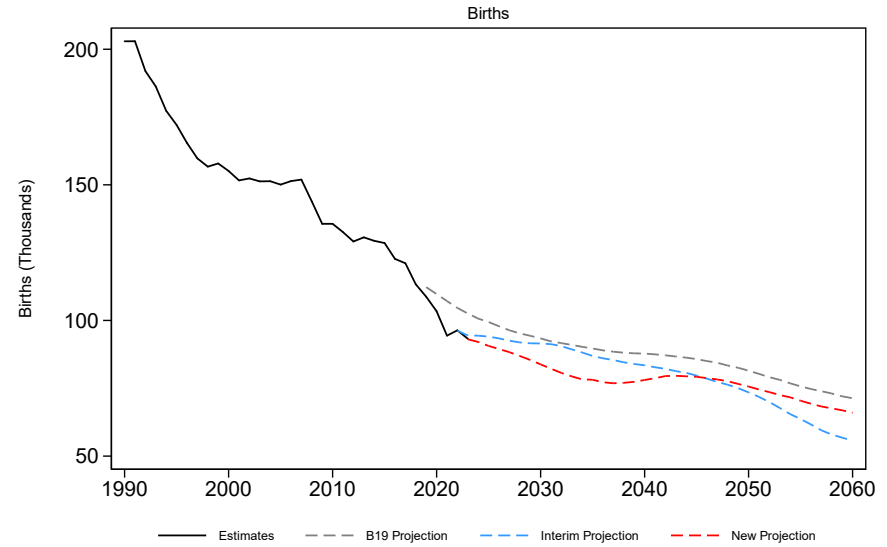
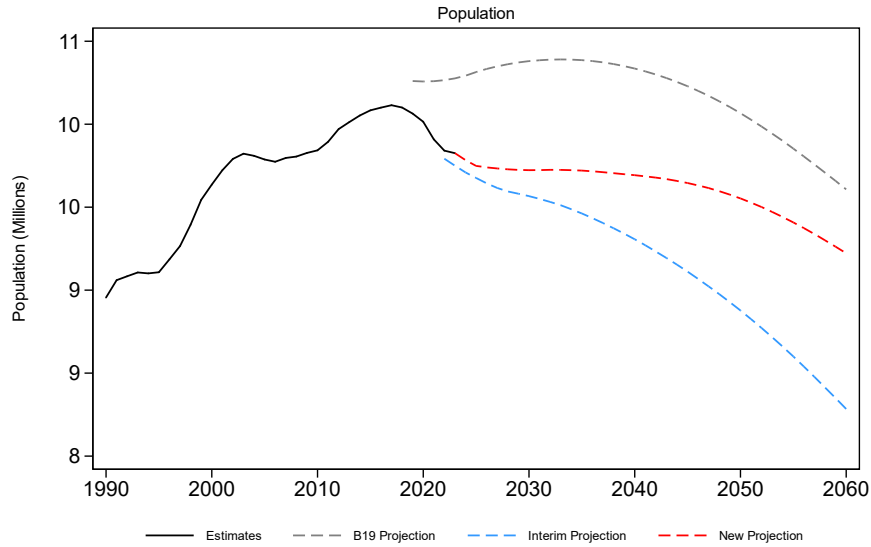
Thank You

Walter Schwarm, PhD
Chief Demographer
California Department of Finance



Walter.Schwarm@dof.ca.gov

LOS ANGELES



RIVERSIDE

