



**STATE POPULATION DECLINES SLIGHTLY BY 173,000  
IN FISCAL YEAR 2020-2021**

FOR IMMEDIATE RELEASE:  
December 17, 2021

CONTACT: Walter Schwarm/Phuong Nguyen  
(916) 323-4086  
H.D. Palmer (916) 323-0648

**SACRAMENTO** – California's population declined by 173,000 between July 1, 2020 and July 1, 2021 to total 39.37 million, according to official population estimates released today by the Department of Finance.

The 0.44-percent decline is slightly less than, but follows a similar pattern of, the population decline reported for the January 2021 calendar year estimates. Three principal factors contributed once again to this net population decrease:

- Continuing declines in natural increase – births minus non-COVID-19 deaths. While natural increase for this period was 76,100, it represents slower growth, as past 12-month average increases were above 100,000.
- Continuing declines in foreign immigration (loss of 90,000), accelerated in recent years by federal policy.
- Deaths in 2020-21 separately associated with the COVID-19 pandemic [loss of 56,500]

Other factors contributing to the decrease include the loss of 53,000 international students due to pandemic restrictions, and declines in domestic in-migration.

In recent years, the first two factors – which mirror nationwide trends – have contributed to the state's population growth slowing and plateauing. Though a new federal administration took office in January, immigration policies were not altered until late February, and lags in implementing these changes remain. The additional COVID-19-related deaths on top of these existing trends further compounded the annual loss.

Natural increase—births minus deaths—added 76,100 people to the state over the period with 420,300 births and 344,200 deaths. Births were down from 437,300 in the year ending July 1, 2020, while deaths were up from 280,300 in the preceding year, some due to the COVID-19 pandemic. While deaths are generally rising due to an aging population, state vital statistics data indicate the COVID-19 pandemic directly increased deaths for this period by 56,479.

“Excess deaths” — or, deaths above their pre-pandemic three-year average, but not attributed to a single factor—were observed in all counties, from 3.9 percent above average in Lake County to 29.3 percent above average in Imperial County. Seven counties had death rates at least 20 percent above average; 23 counties had rates between 10 and 20 percent above average, and 28 counties had death rates at less than 10 percent above average.

Since 2011, California has experienced negative net domestic migration, where the number of people moving out of the state in a year exceed the number moving in. Since 2016, net domestic outmigration has exceeded net international migration, leaving natural increase as the only source of population growth. However, with continuing fertility declines and increased

deaths from aging and the pandemic, natural increase did not offset the declines in net migration—total migration into the state minus total out-migration —during this period.

Net international migration to California declined significantly to 27,000 persons in fiscal year 2020-21, reflecting the suspension of visa processing in March 2020 through December 2020, which was extended to certain types of foreign worker visas through June 2021. Global travel restrictions during the pandemic also resulted in 53,000 fewer international students in California, a decline of 29 percent.

While net international migration added population during this period, negative domestic net migration outweighed these gains, resulting in an overall net migration loss of 249,200 residents. Domestic out-migration saw some increase, while domestic in-migration slowed considerably.

California's 58 counties range in size from Alpine County, with just over 1,100 residents, to Los Angeles County with 9.9 million residents. The population increased in 20 counties largely in the Central Valley, the Sacramento Valley, and the Inland Empire. San Benito and Colusa counties had the highest growth rates, at 1.27 percent and 1.07 percent, respectively. Most inland counties had positive population growth rates, continuing a trend that started in 2016. No urban coastal counties gained population.

Counties in the San Francisco Bay Area had increasing outmigration flow. For the first time, all nine counties in the Bay Area had a drop in population, ranging from a -0.19 percent in Solano County to -1.77 percent in San Francisco. Distance work and school combined with restricted international travel led to a net loss of 15,400 persons between 2019-2020 and 2020-2021 in San Francisco. Alameda, Contra Costa, and Solano counties also declined in population for the first time since 2010.

Besides Bay Area counties, San Diego County registered its first 12-month period of negative population growth, due to declines in natural increase of about 5,000, losses of around 4,000 in international migration, and reductions in Group Quarters of around 4,000. Population also declined in seven of the ten counties with one million or more people: Alameda, Contra Costa, Los Angeles, Orange, San Bernardino, San Diego, and Santa Clara.

Group quarters (GQ) account for about two percent (793,200) of the state population. This total includes college dormitories (132,900), state and federal prisons (120,900), local jails (60,600), and military group quarters (55,500). Efforts to halt the spread of COVID-19 drove declines in the GQ population by 14 percent or 125,000. Dormitory population declined by 97,500 persons (42 percent) compared to the previous year, representing 78 percent of total change in GQ population. Additionally, 20 percent of the decline (25,600) occurred among the prison/jail population. Counties affected by GQ declines were Sacramento, which retained positive growth, and Del Norte, Lassen, Humboldt, San Louis Obispo, and Tuolumne counties, which saw negative growth.

Highlights of the July 1, 2021 county population report include:

- The state's ten largest counties were Los Angeles, San Diego, Orange, Riverside, San Bernardino, Santa Clara, Alameda, Sacramento, Contra Costa, and Fresno, with each having more than one million residents. These ten counties represented 72 percent of California's population. Only three of these counties (Riverside, Sacramento, and Fresno) had positive population growth. In addition, only Fresno and Riverside counties had positive population growth from net migration.

- Among the 10 counties with the highest numeric change, Riverside and San Joaquin counties had the largest gains, with growth largely due to net domestic migration. Fresno County's growth reflected natural increase and moderate positive net migration.
- Since the 2010 Census, Los Angeles County's population had grown to 10 million in 2013. The county continued to increase its population size to 10.1 million in 2017. However, Los Angeles County's population began to decline in 2018 and fell below 10 million people in 2021.
- Population growth rates ranged from a high of 1.27 percent in San Benito County to a low of -4.76 percent in Butte County. Butte County was still losing population after the Camp Fire in November 2018; however, the magnitude was much slower than the previous year. The number of counties with negative population growth has increased each year across the decade. Thirty-eight counties had population losses this year.
- Although natural increase was a main source of population growth in the state, 26 counties experienced natural decrease—more deaths than births—an increase from 18 counties in the preceding year. Among those counties, natural decrease in El Dorado, Placer, and Shasta counties was offset by positive net migration, especially net domestic migration.

### **Background Information**

Population estimates produced by the Department of Finance are mandated by the California Constitution and various codes. They are used by state agencies, California counties, academic institutions, private research organizations, the media, and the public. Primary uses include budgeting, needs assessment, program planning and evaluation, distribution of state funds, and the calculation of rates (such as birth, death, and incarceration).

Population estimates are developed using aggregate data from a variety of sources, including birth and death counts provided by the Department of Public Health, driver's license and driver's license address change data from the Department of Motor Vehicles, housing unit data from local governments, school enrollment data from the Department of Education, and federal income tax return data from the U.S. Internal Revenue Service. These statistical reports of administrative records do not disclose any information about individuals. Due to the pandemic, many tax, license renewals, and other deadlines were extended, thus there may be larger than usual revisions to these estimates once more complete data is available.

Significant adjustments to the prison and college dorm population were made by transferring them into the household population:

- A majority of dormitory losses were shifted back into the household population. A proportion of students were kept in the county hosting the school while the remainder were returned to their county of origin. A small portion of students were removed from the state to represent out of state and international students.
- The prison population was shifted back into the household population by returning them to their intake counties using data from the California Department of Corrections and Rehabilitation.

This data series continues to use Census 2010 as the benchmark population since Census 2020 results with necessary detail are not yet available. The Department of Finance estimates population each year based on population changes in births, deaths, domestic migration, and international migration. Following the release of the 2020 Decennial Census PL 94-171

redistricting data in August 2021, the department closed a gap between the 2010- 2020 estimates series and 2020 Census data using intercensal population estimation methods consistent with those employed by the Census Bureau. Postcensal data years of July 2020 and July 2021 also used the 2010 estimates base due to the lack of detailed age data in the current census release.

This estimate reflects revisions to the preliminary July 1, 2020 state and county estimates released in December 2020. The preliminary estimate had the state population at 39,761,200 and this year's revised estimate for 2020 is 39,541,800, a downward revision of 219,400. The change mostly reflects the process of controlling to Census 2020 data.

The pandemic has affected data sources used in the population estimates process. There also are indications the pandemic has altered recent population patterns in some parts of the state. Revisions to the estimates are likely. The report reflects the current release of initial 2020 Census results. Additional decennial census population, age and other data will be released in the coming year and incorporated into future estimates.

County ranking tables, maps, and the E-2 (*California County Population Estimates and Components of Change by Year, July 1, 2010-2021*) methodology and data tables are included. The E-2 and companion reports E-6 (*Population Estimates and Components of Change by County, July 1, 2010-2021*) and E-7 (*California Population Estimates, with Components of Change and Crude Rates, July 1, 1900-2021*), are on the Department's website: <http://www.dof.ca.gov/Forecasting/Demographics/Estimates>.

# # #

July 1, 2021 County Estimates Ranked by Size, Numeric and Percent Change since July 1, 2020

Rank	County	July 1, 2021 Estimate	Percent of State	Numeric Rank	County	Numeric Change	Percent Rank	County	Percent Change
	California	39,368,613	100.00%		California	-173,173		California	-0.44%
1	Los Angeles	9,944,953	25.26%	1	Riverside	10,167	1	San Benito	1.27%
2	San Diego	3,288,455	8.35%	2	San Joaquin	6,024	2	Colusa	1.07%
3	Orange	3,161,681	8.03%	3	Fresno	4,884	3	Placer	0.92%
4	Riverside	2,431,647	6.18%	4	Placer	3,736	4	Merced	0.83%
5	San Bernardino	2,181,258	5.54%	5	Merced	2,320	5	San Joaquin	0.77%
6	Santa Clara	1,913,113	4.86%	6	Tulare	1,516	6	Yuba	0.76%
7	Alameda	1,671,741	4.25%	7	Kern	1,262	7	Sutter	0.72%
8	Sacramento	1,586,031	4.03%	8	San Benito	814	8	Glenn	0.64%
9	Contra Costa	1,163,765	2.96%	9	Sutter	727	9	Fresno	0.48%
10	Fresno	1,013,744	2.58%	10	El Dorado	710	10	Riverside	0.42%
11	Kern	908,283	2.31%	11	Monterey	695	11	El Dorado	0.37%
12	San Francisco	855,550	2.17%	12	Yuba	623	12	Tehama	0.35%
13	Ventura	837,845	2.13%	13	Yolo	592	13	Kings	0.35%
14	San Joaquin	786,700	2.00%	14	Kings	532	14	Tulare	0.32%
15	San Mateo	756,655	1.92%	15	Sacramento	365	15	Yolo	0.27%
16	Stanislaus	553,138	1.41%	16	Colusa	233	16	Monterey	0.16%
17	Sonoma	485,110	1.23%	17	Tehama	230	17	Kern	0.14%
18	Tulare	474,998	1.21%	18	Shasta	191	18	Shasta	0.11%
19	Solano	452,532	1.15%	19	Glenn	185	19	Madera	0.09%
20	Santa Barbara	443,121	1.13%	20	Madera	135	20	Sacramento	0.02%
21	Monterey	439,703	1.12%	21	Plumas	-7	21	Lake	-0.02%
22	Placer	409,044	1.04%	22	Sierra	-16	22	San Bernardino	-0.03%
23	Merced	283,193	0.72%	23	Lake	-17	23	Plumas	-0.04%
24	San Luis Obispo	278,607	0.71%	24	Alpine	-18	24	Stanislaus	-0.15%
25	Santa Cruz	267,551	0.68%	25	Inyo	-46	25	Solano	-0.19%
26	Marin	260,416	0.66%	26	Mariposa	-79	26	Inyo	-0.24%
27	Yolo	217,136	0.55%	27	Trinity	-88	27	Contra Costa	-0.25%
28	Butte	201,158	0.51%	28	Modoc	-111	28	Nevada	-0.35%
29	El Dorado	191,992	0.49%	29	Mono	-112	29	Calaveras	-0.37%
30	Shasta	182,072	0.46%	30	Calaveras	-166	30	Mariposa	-0.46%
31	Imperial	177,052	0.45%	31	Amador	-190	31	San Diego	-0.46%
32	Madera	156,654	0.40%	32	Del Norte	-216	32	Amador	-0.47%
33	Kings	153,617	0.39%	33	Siskiyou	-301	33	Sierra	-0.49%
34	Napa	137,600	0.35%	34	Nevada	-359	34	Trinity	-0.55%
35	Humboldt	135,467	0.34%	35	Lassen	-648	35	Alameda	-0.59%
36	Nevada	102,033	0.26%	36	Tuolumne	-689	36	Napa	-0.60%
37	Sutter	101,478	0.26%	37	San Bernardino	-725	37	Los Angeles	-0.67%
38	Mendocino	90,806	0.23%	38	Mendocino	-796	38	Siskiyou	-0.68%
39	Yuba	82,091	0.21%	39	Napa	-833	39	Orange	-0.72%
40	Lake	68,082	0.17%	40	Stanislaus	-857	40	Marin	-0.76%
41	Tehama	65,873	0.17%	41	Solano	-873	41	Humboldt	-0.77%
42	San Benito	64,924	0.16%	42	Humboldt	-1,047	42	Del Norte	-0.78%
43	Tuolumne	54,811	0.14%	43	Imperial	-1,485	43	Ventura	-0.79%
44	Calaveras	45,111	0.11%	44	Marin	-1,994	44	Imperial	-0.83%
45	Siskiyou	43,790	0.11%	45	Contra Costa	-2,904	45	Mono	-0.85%
46	Amador	40,316	0.10%	46	San Luis Obispo	-4,389	46	Mendocino	-0.87%
47	Lassen	31,377	0.08%	47	Sonoma	-4,770	47	San Mateo	-0.90%
48	Glenn	29,007	0.07%	48	Santa Cruz	-4,809	48	Sonoma	-0.97%
49	Del Norte	27,529	0.07%	49	Santa Barbara	-5,538	49	Santa Clara	-1.06%
50	Colusa	22,059	0.06%	50	Ventura	-6,700	50	Santa Barbara	-1.23%
51	Plumas	19,659	0.05%	51	San Mateo	-6,842	51	Tuolumne	-1.24%
52	Inyo	18,931	0.05%	52	Alameda	-9,959	52	Modoc	-1.28%
53	Mariposa	17,044	0.04%	53	Butte	-10,058	53	Alpine	-1.50%
54	Trinity	16,047	0.04%	54	San Diego	-15,281	54	San Luis Obispo	-1.55%
55	Mono	13,073	0.03%	55	San Francisco	-15,435	55	Santa Cruz	-1.77%
56	Modoc	8,592	0.02%	56	Santa Clara	-20,403	56	San Francisco	-1.77%
57	Sierra	3,217	0.01%	57	Orange	-22,832	57	Lassen	-2.02%
58	Alpine	1,181	0.00%	58	Los Angeles	-67,521	58	Butte	-4.76%

California County Rankings by Size, Numeric and Percent Change: July 1, 2020 -July 1, 2021

County	Size Rank	Numeric Change		Percent Change	
		Rank	Rank	Rank	County
Alameda	7	52	35	Alameda	
Alpine	58	24	53	Alpine	
Amador	46	31	32	Amador	
Butte	28	53	58	Butte	
Calaveras	44	30	29	Calaveras	
Colusa	50	16	2	Colusa	
Contra Costa	9	45	27	Contra Costa	
Del Norte	49	32	42	Del Norte	
El Dorado	29	10	11	El Dorado	
Fresno	10	3	9	Fresno	
Glenn	48	19	8	Glenn	
Humboldt	35	42	41	Humboldt	
Imperial	31	43	44	Imperial	
Inyo	52	25	26	Inyo	
Kern	11	7	17	Kern	
Kings	33	14	13	Kings	
Lake	40	23	21	Lake	
Lassen	47	35	57	Lassen	
Los Angeles	1	58	37	Los Angeles	
Madera	32	20	19	Madera	
Marin	26	44	40	Marin	
Mariposa	53	26	30	Mariposa	
Mendocino	38	38	46	Mendocino	
Merced	23	5	4	Merced	
Modoc	56	28	52	Modoc	
Mono	55	29	45	Mono	
Monterey	21	11	16	Monterey	
Napa	34	39	36	Napa	
Nevada	36	34	28	Nevada	
Orange	3	57	39	Orange	
Placer	22	4	3	Placer	
Plumas	51	21	23	Plumas	
Riverside	4	1	10	Riverside	
Sacramento	8	15	20	Sacramento	
San Benito	42	8	1	San Benito	
San Bernardino	5	37	22	San Bernardino	
San Diego	2	54	31	San Diego	
San Francisco	12	55	56	San Francisco	
San Joaquin	14	2	5	San Joaquin	
San Luis Obispo	24	46	54	San Luis Obispo	
San Mateo	15	51	47	San Mateo	
Santa Barbara	20	49	50	Santa Barbara	
Santa Clara	6	56	49	Santa Clara	
Santa Cruz	25	48	55	Santa Cruz	
Shasta	30	18	18	Shasta	
Sierra	57	22	33	Sierra	
Siskiyou	45	33	38	Siskiyou	
Solano	19	41	25	Solano	
Sonoma	17	47	48	Sonoma	
Stanislaus	16	40	24	Stanislaus	
Sutter	37	9	7	Sutter	
Tehama	41	17	12	Tehama	
Trinity	54	27	34	Trinity	
Tulare	18	6	14	Tulare	
Tuolumne	43	36	51	Tuolumne	
Ventura	13	50	43	Ventura	
Yolo	27	13	15	Yolo	
Yuba	39	12	6	Yuba	

E-2. California County Population Estimates and Components of Change  
Revised July 1, 2020 and Preliminary July 1, 2021  
Table 1.

County	Total Population		Change 2020-2021		Components of Change					
	Revised July 1, 2020	Preliminary July 1, 2021	Number	Percent	Births	Deaths	Natural Increase	Net Migration	Net Immigration	Net Domestic Migration
Alameda	1,681,700	1,671,741	-9,959	-0.59	17,296	11,592	5,704	-15,663	1,558	-17,221
Alpine	1,199	1,181	-18	-1.50	13	33	-20	2	0	2
Amador	40,506	40,316	-190	-0.47	272	503	-231	41	6	35
Butte	211,216	201,158	-10,058	-4.76	1,983	2,476	-493	-9,565	-35	-9,530
Calaveras	45,277	45,111	-166	-0.37	360	586	-226	60	4	56
Colusa	21,826	22,059	233	1.07	292	193	99	134	18	116
Contra Costa	1,166,669	1,163,765	-2,904	-0.25	11,795	9,109	2,686	-5,590	1,172	-6,762
Del Norte	27,745	27,529	-216	-0.78	258	376	-118	-98	3	-101
El Dorado	191,282	191,992	710	0.37	1,472	1,855	-383	1,093	43	1,050
Fresno	1,008,860	1,013,744	4,884	0.48	13,830	9,561	4,269	615	561	54
Glenn	28,822	29,007	185	0.64	358	300	58	127	12	115
Humboldt	136,514	135,467	-1,047	-0.77	1,262	1,496	-234	-813	25	-838
Imperial	178,537	177,052	-1,485	-0.83	2,396	1,889	507	-1,992	287	-2,279
Inyo	18,977	18,931	-46	-0.24	173	241	-68	22	3	19
Kern	907,021	908,283	1,262	0.14	12,363	8,349	4,014	-2,752	474	-3,226
Kings	153,085	153,617	532	0.35	2,242	1,206	1,036	-504	66	-570
Lake	68,099	68,082	-17	-0.02	713	903	-190	173	15	158
Lassen	32,025	31,377	-648	-2.02	293	323	-30	-618	4	-622
Los Angeles	10,012,474	9,944,953	-67,521	-0.67	97,884	88,887	8,997	-76,518	6,960	-83,478
Madera	156,519	156,654	135	0.09	2,099	1,458	641	-506	53	-559
Marin	262,410	260,416	-1,994	-0.76	2,080	2,207	-127	-1,867	131	-1,998
Mariposa	17,123	17,044	-79	-0.46	120	220	-100	21	2	19
Mendocino	91,602	90,806	-796	-0.87	879	1,068	-189	-607	29	-636
Merced	280,873	283,193	2,320	0.83	3,750	2,382	1,368	952	134	818
Modoc	8,703	8,592	-111	-1.28	75	131	-56	-55	2	-57
Mono	13,185	13,073	-112	-0.85	123	59	64	-176	4	-180
Monterey	439,008	439,703	695	0.16	5,593	3,326	2,267	-1,572	257	-1,829
Napa	138,433	137,600	-833	-0.60	1,202	1,298	-96	-737	81	-818
Nevada	102,392	102,033	-359	-0.35	772	1,218	-446	87	13	74
Orange	3,184,513	3,161,681	-22,832	-0.72	30,969	26,320	4,649	-27,481	2,770	-30,251
Placer	405,308	409,044	3,736	0.92	3,487	3,774	-287	4,023	154	3,869
Plumas	19,666	19,659	-7	-0.04	163	257	-94	87	-1	88
Riverside	2,421,480	2,431,647	10,167	0.42	27,035	23,971	3,064	7,103	1,125	5,978
Sacramento	1,585,666	1,586,031	365	0.02	18,009	13,903	4,106	-3,741	2,295	-6,036
San Benito	64,110	64,924	814	1.27	728	438	290	524	35	489
San Bernardino	2,181,983	2,181,258	-725	-0.03	26,744	21,681	5,063	-5,788	1,148	-6,936
San Diego	3,303,736	3,288,455	-15,281	-0.46	37,217	26,659	10,558	-25,839	1,898	-27,737
San Francisco	870,985	855,550	-15,435	-1.77	8,002	6,701	1,301	-16,736	802	-17,538
San Joaquin	780,676	786,700	6,024	0.77	9,717	7,533	2,184	3,840	677	3,163
San Luis Obispo	282,996	278,607	-4,389	-1.55	2,359	2,639	-280	-4,109	55	-4,164
San Mateo	763,497	756,655	-6,842	-0.90	7,734	5,185	2,549	-9,391	873	-10,264
Santa Barbara	448,659	443,121	-5,538	-1.23	5,337	3,696	1,641	-7,179	-106	-7,073
Santa Clara	1,933,516	1,913,113	-20,403	-1.06	19,547	11,896	7,651	-28,054	2,124	-30,178
Santa Cruz	272,360	267,551	-4,809	-1.77	2,186	2,095	91	-4,900	57	-4,957
Shasta	181,881	182,072	191	0.11	1,845	2,607	-762	953	26	927
Sierra	3,233	3,217	-16	-0.49	26	45	-19	3	0	3
Siskiyou	44,091	43,790	-301	-0.68	390	702	-312	11	7	4
Solano	453,405	452,532	-873	-0.19	4,952	3,932	1,020	-1,893	281	-2,174
Sonoma	489,880	485,110	-4,770	-0.97	4,311	4,606	-295	-4,475	210	-4,685
Stanislaus	553,995	553,138	-857	-0.15	7,088	5,798	1,290	-2,147	426	-2,573
Sutter	100,751	101,478	727	0.72	1,255	947	308	419	116	303
Tehama	65,643	65,873	230	0.35	724	875	-151	381	15	366
Trinity	16,135	16,047	-88	-0.55	99	177	-78	-10	2	-12
Tulare	473,482	474,998	1,516	0.32	6,676	4,162	2,514	-998	211	-1,209
Tuolumne	55,500	54,811	-689	-1.24	398	766	-368	-321	6	-327
Ventura	844,545	837,845	-6,700	-0.79	8,287	7,347	940	-7,640	376	-8,016
Yolo	216,544	217,136	592	0.27	1,957	1,527	430	162	-63	225
Yuba	81,468	82,091	623	0.76	1,121	761	360	263	23	240
California	39,541,786	39,368,613	-173,173	-0.44	420,311	344,245	76,066	-249,239	27,424	-276,663

E-2. California County Population Estimates and Components of Change  
 Revised July 1, 2019 and Revised July 1, 2020  
 Table 2.

County	Total Population		Change 2019-2020		Components of Change					
	Revised July 1, 2019	Revised July 1, 2020	Number	Percent	Births	Deaths	Natural Increase	Net Migration	Net Immigration	Net Domestic Migration
Alameda	1,678,926	1,681,700	2,774	0.17	17,827	10,413	7,414	-4,640	4,373	-9,013
Alpine	1,205	1,199	-6	-0.50	15	20	-5	-1	0	-1
Amador	40,279	40,506	227	0.56	294	495	-201	428	16	412
Butte	226,714	211,216	-15,498	-6.84	2,072	2,062	10	-15,508	-98	-15,410
Calaveras	45,285	45,277	-8	-0.02	391	515	-124	116	13	103
Colusa	21,745	21,826	81	0.37	259	140	119	-38	50	-88
Contra Costa	1,162,287	1,166,669	4,382	0.38	11,956	8,194	3,762	620	3,291	-2,671
Del Norte	27,604	27,745	141	0.51	281	342	-61	202	8	194
El Dorado	187,905	191,282	3,377	1.80	1,518	1,657	-139	3,516	120	3,396
Fresno	1,001,640	1,008,860	7,220	0.72	14,107	7,301	6,806	414	1,574	-1,160
Glenn	28,525	28,822	297	1.04	365	255	110	187	35	152
Humboldt	136,740	136,514	-226	-0.17	1,311	1,366	-55	-171	70	-241
Imperial	180,809	178,537	-2,272	-1.26	2,462	1,377	1,085	-3,357	807	-4,164
Inyo	18,947	18,977	30	0.16	166	218	-52	82	9	73
Kern	903,150	907,021	3,871	0.43	12,606	6,581	6,025	-2,154	1,331	-3,485
Kings	151,691	153,085	1,394	0.92	2,191	928	1,263	131	184	-53
Lake	68,114	68,099	-15	-0.02	700	830	-130	115	43	72
Lassen	32,857	32,025	-832	-2.53	277	261	16	-848	11	-859
Los Angeles	10,063,851	10,012,474	-51,377	-0.51	103,446	69,468	33,978	-85,355	19,537	-104,892
Madera	155,291	156,519	1,228	0.79	2,065	1,107	958	270	148	122
Marin	263,917	262,410	-1,507	-0.57	2,055	2,018	37	-1,544	369	-1,913
Mariposa	17,213	17,123	-90	-0.52	145	192	-47	-43	6	-49
Mendocino	91,727	91,602	-125	-0.14	906	924	-18	-107	82	-189
Merced	278,157	280,873	2,716	0.98	3,797	1,904	1,893	823	375	448
Modoc	8,709	8,703	-6	-0.07	84	109	-25	19	6	13
Mono	13,227	13,185	-42	-0.32	134	58	76	-118	10	-128
Monterey	440,874	439,008	-1,866	-0.42	5,808	2,662	3,146	-5,012	721	-5,733
Napa	138,965	138,433	-532	-0.38	1,235	1,219	16	-548	227	-775
Nevada	102,298	102,392	94	0.09	789	1,053	-264	358	38	320
Orange	3,191,365	3,184,513	-6,852	-0.21	33,549	20,674	12,875	-19,727	7,777	-27,504
Placer	401,671	405,308	3,637	0.91	3,572	3,293	279	3,358	434	2,924
Plumas	19,807	19,666	-141	-0.71	158	229	-71	-70	-2	-68
Riverside	2,400,535	2,421,480	20,945	0.87	27,754	18,294	9,460	11,485	3,159	8,326
Sacramento	1,570,918	1,585,666	14,748	0.94	18,601	12,125	6,476	8,272	6,443	1,829
San Benito	63,282	64,110	828	1.31	750	375	375	453	99	354
San Bernardino	2,174,437	2,181,983	7,546	0.35	28,058	15,490	12,568	-5,022	3,224	-8,246
San Diego	3,294,272	3,303,736	9,464	0.29	38,348	22,651	15,697	-6,233	5,328	-11,561
San Francisco	872,205	870,985	-1,220	-0.14	8,419	5,955	2,464	-3,684	2,251	-5,935
San Joaquin	771,083	780,676	9,593	1.24	9,869	5,886	3,983	5,610	1,900	3,710
San Luis Obispo	282,617	282,996	379	0.13	2,408	2,365	43	336	155	181
San Mateo	766,312	763,497	-2,815	-0.37	8,117	4,802	3,315	-6,130	2,452	-8,582
Santa Barbara	448,815	448,659	-156	-0.03	5,365	3,223	2,142	-2,298	-298	-2,000
Santa Clara	1,936,521	1,933,516	-3,005	-0.16	20,508	10,640	9,868	-12,873	5,962	-18,835
Santa Cruz	272,182	272,360	178	0.07	2,328	1,769	559	-381	161	-542
Shasta	181,387	181,881	494	0.27	1,873	2,247	-374	868	73	795
Sierra	3,233	3,233	0	0.00	25	35	-10	10	0	10
Siskiyou	44,193	44,091	-102	-0.23	415	615	-200	98	19	79
Solano	451,701	453,405	1,704	0.38	5,020	3,528	1,492	212	790	-578
Sonoma	492,668	489,880	-2,788	-0.57	4,368	4,165	203	-2,991	588	-3,579
Stanislaus	551,566	553,995	2,429	0.44	7,266	4,415	2,851	-422	1,195	-1,617
Sutter	101,046	100,751	-295	-0.29	1,251	885	366	-661	325	-986
Tehama	65,312	65,643	331	0.51	769	709	60	271	41	230
Trinity	16,054	16,135	81	0.50	97	159	-62	143	4	139
Tulare	470,619	473,482	2,863	0.61	6,777	3,376	3,401	-538	592	-1,130
Tuolumne	55,316	55,500	184	0.33	446	712	-266	450	18	432
Ventura	845,474	844,545	-929	-0.11	8,644	6,006	2,638	-3,567	1,056	-4,623
Yolo	216,073	216,544	471	0.22	2,081	1,382	699	-228	-176	-52
Yuba	80,250	81,468	1,218	1.52	1,191	615	576	642	64	578
California	39,529,566	39,541,786	12,220	0.03	437,289	280,289	157,000	-144,780	76,990	-221,770



E-2. California County Population Estimates and Components of Change  
 Revised July 1, 2018 and Revised July 1, 2019  
 Table 3.

County	Total Population		Change 2018-2019		Components of Change					
	Revised July 1, 2018	Revised July 1, 2019	Number	Percent	Births	Deaths	Natural Increase	Net Migration	Net Immigration	Net Domestic Migration
Alameda	1,669,659	1,678,926	9,267	0.56	18,325	9,762	8,563	704	7,477	-6,773
Alpine	1,208	1,205	-3	-0.25	12	23	-11	8	1	7
Amador	40,038	40,279	241	0.60	309	437	-128	369	19	350
Butte	234,627	226,714	-7,913	-3.37	2,308	2,355	-47	-7,866	166	-8,032
Calaveras	45,365	45,285	-80	-0.18	380	525	-145	65	17	48
Colusa	21,690	21,745	55	0.25	264	177	87	-32	66	-98
Contra Costa	1,158,017	1,162,287	4,270	0.37	11,856	7,733	4,123	147	3,809	-3,662
Del Norte	27,572	27,604	32	0.12	272	309	-37	69	9	60
El Dorado	187,122	187,905	783	0.42	1,581	1,525	56	727	171	556
Fresno	993,965	1,001,640	7,675	0.77	14,280	6,943	7,337	338	2,178	-1,840
Glenn	28,134	28,525	391	1.39	390	266	124	267	31	236
Humboldt	137,493	136,740	-753	-0.55	1,429	1,360	69	-822	82	-904
Imperial	180,627	180,809	182	0.10	2,717	1,117	1,600	-1,418	1,100	-2,518
Inyo	18,953	18,947	-6	-0.03	189	212	-23	17	25	-8
Kern	895,655	903,150	7,495	0.84	12,996	6,197	6,799	696	1,727	-1,031
Kings	151,040	151,691	651	0.43	2,184	841	1,343	-692	268	-960
Lake	68,358	68,114	-244	-0.36	704	874	-170	-74	53	-127
Lassen	32,936	32,857	-79	-0.24	298	267	31	-110	16	-126
Los Angeles	10,100,671	10,063,851	-36,820	-0.36	108,758	64,267	44,491	-81,311	37,959	-119,270
Madera	155,476	155,291	-185	-0.12	2,044	1,074	970	-1,155	213	-1,368
Marin	264,944	263,917	-1,027	-0.39	2,103	1,902	201	-1,228	400	-1,628
Mariposa	17,345	17,213	-132	-0.76	138	198	-60	-72	7	-79
Mendocino	91,726	91,727	1	0.00	916	847	69	-68	92	-160
Merced	274,871	278,157	3,286	1.20	3,904	1,753	2,151	1,135	534	601
Modoc	8,755	8,709	-46	-0.53	97	112	-15	-31	3	-34
Mono	13,222	13,227	5	0.04	130	52	78	-73	13	-86
Monterey	439,618	440,874	1,256	0.29	5,917	2,633	3,284	-2,028	938	-2,966
Napa	139,558	138,965	-593	-0.42	1,263	1,172	91	-684	275	-959
Nevada	101,920	102,298	378	0.37	801	1,036	-235	613	64	549
Orange	3,193,464	3,191,365	-2,099	-0.07	35,238	20,389	14,849	-16,948	11,253	-28,201
Placer	395,677	401,671	5,994	1.51	3,674	3,280	394	5,600	557	5,043
Plumas	19,575	19,807	232	1.19	159	225	-66	298	3	295
Riverside	2,383,773	2,400,535	16,762	0.70	28,520	17,284	11,236	5,526	4,699	827
Sacramento	1,554,668	1,570,918	16,250	1.05	19,052	11,721	7,331	8,919	7,254	1,665
San Benito	61,848	63,282	1,434	2.32	798	351	447	987	121	866
San Bernardino	2,160,036	2,174,437	14,401	0.67	28,857	14,709	14,148	253	4,695	-4,442
San Diego	3,293,350	3,294,272	922	0.03	39,259	21,827	17,432	-16,510	10,369	-26,879
San Francisco	872,338	872,205	-133	-0.02	8,690	5,796	2,894	-3,027	4,720	-7,747
San Joaquin	759,753	771,083	11,330	1.49	9,979	5,630	4,349	6,981	2,426	4,555
San Luis Obispo	282,952	282,617	-335	-0.12	2,459	2,476	-17	-318	219	-537
San Mateo	766,711	766,312	-399	-0.05	8,273	4,725	3,548	-3,947	2,690	-6,637
Santa Barbara	447,666	448,815	1,149	0.26	5,497	3,176	2,321	-1,172	698	-1,870
Santa Clara	1,937,985	1,936,521	-1,464	-0.08	21,160	10,069	11,091	-12,555	8,206	-20,761
Santa Cruz	273,527	272,182	-1,345	-0.49	2,424	1,719	705	-2,050	380	-2,430
Shasta	181,472	181,387	-85	-0.05	1,924	2,259	-335	250	102	148
Sierra	3,232	3,233	1	0.03	26	35	-9	10	1	9
Siskiyou	44,305	44,193	-112	-0.25	446	583	-137	25	26	-1
Solano	449,091	451,701	2,610	0.58	4,941	3,497	1,444	1,166	1,169	-3
Sonoma	496,869	492,668	-4,201	-0.85	4,436	4,008	428	-4,629	756	-5,385
Stanislaus	549,544	551,566	2,022	0.37	7,279	4,343	2,936	-914	1,600	-2,514
Sutter	99,334	101,046	1,712	1.72	1,225	845	380	1,332	461	871
Tehama	64,568	65,312	744	1.15	768	739	29	715	59	656
Trinity	15,754	16,054	300	1.90	104	170	-66	366	2	364
Tulare	467,656	470,619	2,963	0.63	6,997	3,053	3,944	-981	771	-1,752
Tuolumne	55,311	55,316	5	0.01	461	696	-235	240	24	216
Ventura	849,523	845,474	-4,049	-0.48	8,848	5,740	3,108	-7,157	1,585	-8,742
Yolo	216,474	216,073	-401	-0.19	2,046	1,312	734	-1,135	562	-1,697
Yuba	79,043	80,250	1,207	1.53	1,122	624	498	709	80	629
California	39,476,064	39,529,566	53,502	0.14	451,227	267,250	183,977	-130,475	123,201	-253,676

E-2. California County Population Estimates and Components of Change  
 Revised July 1, 2017 and Revised July 1, 2018  
 Table 4.

County	Total Population		Change 2017-2018		Components of Change					
	Revised July 1, 2017	Revised July 1, 2018	Number	Percent	Births	Deaths	Natural Increase	Net Migration	Net Immigration	Net Domestic Migration
Alameda	1,659,750	1,669,659	9,909	0.60	18,317	9,926	8,391	1,518	8,328	-6,810
Alpine	1,211	1,208	-3	-0.25	10	21	-11	8	0	8
Amador	38,549	40,038	1,489	3.86	310	435	-125	1,614	6	1,608
Butte	233,080	234,627	1,547	0.66	2,406	2,493	-87	1,634	184	1,450
Calaveras	45,354	45,365	11	0.02	407	498	-91	102	24	78
Colusa	21,792	21,690	-102	-0.47	273	168	105	-207	115	-322
Contra Costa	1,149,457	1,158,017	8,560	0.74	12,094	8,070	4,024	4,536	4,125	411
Del Norte	26,898	27,572	674	2.51	282	306	-24	698	11	687
El Dorado	184,800	187,122	2,322	1.26	1,619	1,593	26	2,296	187	2,109
Fresno	985,393	993,965	8,572	0.87	14,375	7,192	7,183	1,389	2,686	-1,297
Glenn	28,072	28,134	62	0.22	365	279	86	-24	55	-79
Humboldt	137,492	137,493	1	0.00	1,331	1,327	4	-3	74	-77
Imperial	180,627	180,627	0	0.00	2,741	1,142	1,599	-1,599	1,599	-3,198
Inyo	18,945	18,953	8	0.04	188	223	-35	43	34	9
Kern	888,203	895,655	7,452	0.84	12,904	6,284	6,620	832	2,093	-1,261
Kings	148,933	151,040	2,107	1.41	2,295	935	1,360	747	267	480
Lake	67,963	68,358	395	0.58	758	835	-77	472	46	426
Lassen	32,655	32,936	281	0.86	302	269	33	248	19	229
Los Angeles	10,114,636	10,100,671	-13,965	-0.14	113,353	64,497	48,856	-62,821	40,509	-103,330
Madera	154,238	155,476	1,238	0.80	2,154	1,118	1,036	202	248	-46
Marin	264,753	264,944	191	0.07	2,189	1,997	192	-1	526	-527
Mariposa	17,502	17,345	-157	-0.90	141	218	-77	-80	8	-88
Mendocino	91,609	91,726	117	0.13	947	875	72	45	102	-57
Merced	272,610	274,871	2,261	0.83	3,860	1,777	2,083	178	682	-504
Modoc	8,691	8,755	64	0.74	98	107	-9	73	3	70
Mono	13,355	13,222	-133	-1.00	134	51	83	-216	11	-227
Monterey	438,011	439,618	1,607	0.37	5,814	2,630	3,184	-1,577	1,283	-2,860
Napa	140,299	139,558	-741	-0.53	1,268	1,274	-6	-735	399	-1,134
Nevada	101,384	101,920	536	0.53	788	1,077	-289	825	64	761
Orange	3,188,158	3,193,464	5,306	0.17	36,493	20,443	16,050	-10,744	12,327	-23,071
Placer	388,773	395,677	6,904	1.78	3,629	3,330	299	6,605	579	6,026
Plumas	19,642	19,575	-67	-0.34	158	239	-81	14	1	13
Riverside	2,361,995	2,383,773	21,778	0.92	29,213	17,396	11,817	9,961	5,593	4,368
Sacramento	1,536,517	1,554,668	18,151	1.18	19,173	12,030	7,143	11,008	8,475	2,533
San Benito	60,733	61,848	1,115	1.84	732	348	384	731	144	587
San Bernardino	2,147,291	2,160,036	12,745	0.59	29,280	14,703	14,577	-1,832	4,919	-6,751
San Diego	3,276,113	3,293,350	17,237	0.53	40,462	21,941	18,521	-1,284	14,370	-15,654
San Francisco	868,879	872,338	3,459	0.40	8,665	5,948	2,717	742	4,809	-4,067
San Joaquin	750,306	759,753	9,447	1.26	9,899	5,630	4,269	5,178	2,613	2,565
San Luis Obispo	282,103	282,952	849	0.30	2,496	2,471	25	824	265	559
San Mateo	765,601	766,711	1,110	0.14	8,402	4,797	3,605	-2,495	2,901	-5,396
Santa Barbara	445,801	447,666	1,865	0.42	5,327	3,288	2,039	-174	746	-920
Santa Clara	1,932,947	1,937,985	5,038	0.26	21,773	10,249	11,524	-6,486	9,621	-16,107
Santa Cruz	274,739	273,527	-1,212	-0.44	2,545	1,775	770	-1,982	536	-2,518
Shasta	181,095	181,472	377	0.21	2,002	2,257	-255	632	111	521
Sierra	3,233	3,232	-1	-0.03	26	38	-12	11	2	9
Siskiyou	44,390	44,305	-85	-0.19	433	554	-121	36	19	17
Solano	445,721	449,091	3,370	0.76	5,098	3,517	1,581	1,789	1,350	439
Sonoma	501,111	496,869	-4,242	-0.85	4,507	4,168	339	-4,581	996	-5,577
Stanislaus	546,499	549,544	3,045	0.56	7,337	4,363	2,974	71	1,883	-1,812
Sutter	97,771	99,334	1,563	1.60	1,318	830	488	1,075	473	602
Tehama	64,141	64,568	427	0.67	715	718	-3	430	80	350
Trinity	15,498	15,754	256	1.65	115	137	-22	278	4	274
Tulare	465,343	467,656	2,313	0.50	6,851	3,157	3,694	-1,381	976	-2,357
Tuolumne	55,032	55,311	279	0.51	463	661	-198	477	19	458
Ventura	849,979	849,523	-456	-0.05	9,191	6,030	3,161	-3,617	1,666	-5,283
Yolo	215,072	216,474	1,402	0.65	2,264	1,377	887	515	719	-204
Yuba	78,181	79,043	862	1.10	1,134	687	447	415	81	334
California	39,328,926	39,476,064	147,138	0.37	461,424	270,699	190,725	-43,587	139,966	-183,553

E-2. California County Population Estimates and Components of Change  
 Revised July 1, 2016 and Revised July 1, 2017  
 Table 5.

County	Total Population		Change 2016-2017		Components of Change					
	Revised July 1, 2016	Revised July 1, 2017	Number	Percent	Births	Deaths	Natural Increase	Net Migration	Net Immigration	Net Domestic Migration
Alameda	1,647,332	1,659,750	12,418	0.75	19,501	10,052	9,449	2,969	9,522	-6,553
Alpine	1,207	1,211	4	0.33	7	12	-5	9	0	9
Amador	37,929	38,549	620	1.63	296	439	-143	763	17	746
Butte	230,681	233,080	2,399	1.04	2,462	2,477	-15	2,414	202	2,212
Calaveras	45,365	45,354	-11	-0.02	400	512	-112	101	18	83
Colusa	21,677	21,792	115	0.53	318	164	154	-39	81	-120
Contra Costa	1,141,566	1,149,457	7,891	0.69	12,166	7,869	4,297	3,594	4,291	-697
Del Norte	27,070	26,898	-172	-0.64	276	321	-45	-127	19	-146
El Dorado	182,937	184,800	1,863	1.02	1,639	1,573	66	1,797	198	1,599
Fresno	977,361	985,393	8,032	0.82	14,798	7,057	7,741	291	2,526	-2,235
Glenn	28,005	28,072	67	0.24	382	255	127	-60	64	-124
Humboldt	137,346	137,492	146	0.11	1,422	1,384	38	108	101	7
Imperial	180,280	180,627	347	0.19	2,962	1,039	1,923	-1,576	1,809	-3,385
Inyo	18,956	18,945	-11	-0.06	197	256	-59	48	17	31
Kern	880,702	888,203	7,501	0.85	13,547	6,108	7,439	62	2,094	-2,032
Kings	147,615	148,933	1,318	0.89	2,309	833	1,476	-158	330	-488
Lake	66,945	67,963	1,018	1.52	776	919	-143	1,161	77	1,084
Lassen	32,309	32,655	346	1.07	316	234	82	264	14	250
Los Angeles	10,099,858	10,114,636	14,778	0.15	121,107	63,057	58,050	-43,272	46,448	-89,720
Madera	153,136	154,238	1,102	0.72	2,189	1,117	1,072	30	245	-215
Marin	265,181	264,753	-428	-0.16	2,226	1,954	272	-700	537	-1,237
Mariposa	17,644	17,502	-142	-0.80	146	212	-66	-76	12	-88
Mendocino	91,021	91,609	588	0.65	1,035	828	207	381	155	226
Merced	268,701	272,610	3,909	1.45	4,307	1,843	2,464	1,445	632	813
Modoc	8,795	8,691	-104	-1.18	86	99	-13	-91	0	-91
Mono	13,389	13,355	-34	-0.25	141	59	82	-116	18	-134
Monterey	437,116	438,011	895	0.20	6,017	2,580	3,437	-2,542	1,354	-3,896
Napa	141,089	140,299	-790	-0.56	1,298	1,297	1	-791	401	-1,192
Nevada	100,919	101,384	465	0.46	795	1,056	-261	726	56	670
Orange	3,170,359	3,188,158	17,799	0.56	38,264	19,862	18,402	-603	13,689	-14,292
Placer	382,010	388,773	6,763	1.77	3,781	3,301	480	6,283	556	5,727
Plumas	19,672	19,642	-30	-0.15	181	209	-28	-2	5	-7
Riverside	2,337,698	2,361,995	24,297	1.04	30,499	16,451	14,048	10,249	6,012	4,237
Sacramento	1,520,401	1,536,517	16,116	1.06	19,208	11,677	7,531	8,585	9,443	-858
San Benito	60,087	60,733	646	1.08	760	366	394	252	151	101
San Bernardino	2,132,121	2,147,291	15,170	0.71	30,522	14,259	16,263	-1,093	5,311	-6,404
San Diego	3,263,517	3,276,113	12,596	0.39	42,324	21,600	20,724	-8,128	13,714	-21,842
San Francisco	863,546	868,879	5,333	0.62	9,011	5,766	3,245	2,088	5,966	-3,878
San Joaquin	739,814	750,306	10,492	1.42	10,130	5,610	4,520	5,972	2,927	3,045
San Luis Obispo	281,681	282,103	422	0.15	2,524	2,519	5	417	314	103
San Mateo	764,070	765,601	1,531	0.20	8,740	4,848	3,892	-2,361	3,404	-5,765
Santa Barbara	444,277	445,801	1,524	0.34	5,511	3,250	2,261	-737	996	-1,733
Santa Clara	1,925,914	1,932,947	7,033	0.37	22,552	10,251	12,301	-5,268	10,433	-15,701
Santa Cruz	275,452	274,739	-713	-0.26	2,666	1,785	881	-1,594	602	-2,196
Shasta	180,287	181,095	808	0.45	2,006	2,375	-369	1,177	101	1,076
Sierra	3,220	3,233	13	0.40	35	33	2	11	4	7
Siskiyou	44,554	44,390	-164	-0.37	451	632	-181	17	16	1
Solano	441,224	445,721	4,497	1.02	5,209	3,376	1,833	2,664	1,228	1,436
Sonoma	501,989	501,111	-878	-0.17	4,779	4,257	522	-1,400	970	-2,370
Stanislaus	540,856	546,499	5,643	1.04	7,767	4,382	3,385	2,258	2,002	256
Sutter	96,517	97,771	1,254	1.30	1,266	858	408	846	522	324
Tehama	63,999	64,141	142	0.22	729	646	83	59	67	-8
Trinity	14,840	15,498	658	4.43	126	154	-28	686	3	683
Tulare	462,223	465,343	3,120	0.67	7,159	3,038	4,121	-1,001	1,073	-2,074
Tuolumne	55,162	55,032	-130	-0.24	473	712	-239	109	17	92
Ventura	850,227	849,979	-248	-0.03	9,453	5,804	3,649	-3,897	2,076	-5,973
Yolo	213,224	215,072	1,848	0.87	2,316	1,356	960	888	844	44
Yuba	76,782	78,181	1,399	1.82	1,220	677	543	856	85	771
California	39,127,855	39,328,926	201,071	0.51	482,783	265,660	217,123	-16,052	153,769	-169,821

E-2. California County Population Estimates and Components of Change  
 Revised July 1, 2015 and Revised July 1, 2016  
 Table 6.

County	Total Population		Change 2015-2016		Components of Change					
	Revised July 1, 2015	Revised July 1, 2016	Number	Percent	Births	Deaths	Natural Increase	Net Migration	Net Immigration	Net Domestic Migration
Alameda	1,630,159	1,647,332	17,173	1.05	19,585	9,632	9,953	7,220	10,149	-2,929
Alpine	1,201	1,207	6	0.50	5	8	-3	9	1	8
Amador	36,905	37,929	1,024	2.77	307	444	-137	1,161	17	1,144
Butte	229,359	230,681	1,322	0.58	2,446	2,394	52	1,270	219	1,051
Calaveras	45,414	45,365	-49	-0.11	368	520	-152	103	21	82
Colusa	21,455	21,677	222	1.03	309	150	159	63	92	-29
Contra Costa	1,128,317	1,141,566	13,249	1.17	12,589	7,802	4,787	8,462	4,697	3,765
Del Norte	27,113	27,070	-43	-0.16	317	299	18	-61	11	-72
El Dorado	182,205	182,937	732	0.40	1,554	1,553	1	731	236	495
Fresno	970,859	977,361	6,502	0.67	15,206	6,546	8,660	-2,158	2,775	-4,933
Glenn	28,001	28,005	4	0.01	380	259	121	-117	68	-185
Humboldt	136,348	137,346	998	0.73	1,521	1,307	214	784	76	708
Imperial	179,952	180,280	328	0.18	3,121	1,141	1,980	-1,652	1,955	-3,607
Inyo	18,911	18,956	45	0.24	202	193	9	36	16	20
Kern	878,081	880,702	2,621	0.30	13,817	5,824	7,993	-5,372	2,559	-7,931
Kings	148,525	147,615	-910	-0.61	2,253	789	1,464	-2,374	291	-2,665
Lake	66,931	66,945	14	0.02	724	856	-132	146	73	73
Lassen	31,697	32,309	612	1.93	297	263	34	578	12	566
Los Angeles	10,083,826	10,099,858	16,032	0.16	122,717	63,220	59,497	-43,465	49,260	-92,725
Madera	152,897	153,136	239	0.16	2,278	1,073	1,205	-966	264	-1,230
Marin	263,964	265,181	1,217	0.46	2,291	1,900	391	826	569	257
Mariposa	17,732	17,644	-88	-0.50	158	190	-32	-56	14	-70
Mendocino	90,198	91,021	823	0.91	1,003	892	111	712	144	568
Merced	267,099	268,701	1,602	0.60	4,088	1,795	2,293	-691	750	-1,441
Modoc	8,952	8,795	-157	-1.75	87	108	-21	-136	7	-143
Mono	13,548	13,389	-159	-1.17	138	54	84	-243	21	-264
Monterey	433,478	437,116	3,638	0.84	6,348	2,627	3,721	-83	1,395	-1,478
Napa	140,955	141,089	134	0.10	1,460	1,219	241	-107	397	-504
Nevada	100,456	100,919	463	0.46	811	987	-176	639	63	576
Orange	3,155,895	3,170,359	14,464	0.46	37,303	19,632	17,671	-3,207	15,322	-18,529
Placer	376,215	382,010	5,795	1.54	3,721	3,198	523	5,272	565	4,707
Plumas	19,701	19,672	-29	-0.15	172	221	-49	20	5	15
Riverside	2,313,162	2,337,698	24,536	1.06	30,319	16,181	14,138	10,398	6,433	3,965
Sacramento	1,502,821	1,520,401	17,580	1.17	19,691	11,283	8,408	9,172	8,277	895
San Benito	59,220	60,087	867	1.46	755	330	425	442	147	295
San Bernardino	2,119,575	2,132,121	12,546	0.59	30,678	13,896	16,782	-4,236	5,570	-9,806
San Diego	3,248,371	3,263,517	15,146	0.47	43,316	21,071	22,245	-7,099	14,441	-21,540
San Francisco	857,037	863,546	6,509	0.76	8,996	5,704	3,292	3,217	6,777	-3,560
San Joaquin	729,411	739,814	10,403	1.43	10,153	5,384	4,769	5,634	3,023	2,611
San Luis Obispo	279,800	281,681	1,881	0.67	2,686	2,353	333	1,548	370	1,178
San Mateo	761,484	764,070	2,586	0.34	9,004	4,637	4,367	-1,781	3,342	-5,123
Santa Barbara	442,188	444,277	2,089	0.47	5,594	3,140	2,454	-365	1,077	-1,442
Santa Clara	1,914,457	1,925,914	11,457	0.60	23,285	10,125	13,160	-1,703	11,111	-12,814
Santa Cruz	274,762	275,452	690	0.25	2,892	1,723	1,169	-479	601	-1,080
Shasta	180,812	180,287	-525	-0.29	2,031	2,196	-165	-360	139	-499
Sierra	3,213	3,220	7	0.22	29	33	-4	11	0	11
Siskiyou	44,655	44,554	-101	-0.23	467	609	-142	41	25	16
Solano	435,902	441,224	5,322	1.22	5,177	3,213	1,964	3,358	1,461	1,897
Sonoma	500,553	501,989	1,436	0.29	5,142	4,107	1,035	401	950	-549
Stanislaus	535,436	540,856	5,420	1.01	7,764	4,270	3,494	1,926	1,910	16
Sutter	95,844	96,517	673	0.70	1,405	819	586	87	613	-526
Tehama	63,509	63,999	490	0.77	839	621	218	272	81	191
Trinity	14,228	14,840	612	4.30	103	178	-75	687	5	682
Tulare	459,935	462,223	2,288	0.50	7,328	3,069	4,259	-1,971	1,227	-3,198
Tuolumne	55,104	55,162	58	0.11	441	683	-242	300	26	274
Ventura	850,038	850,227	189	0.02	9,932	5,636	4,296	-4,107	1,992	-6,099
Yolo	209,893	213,224	3,331	1.59	2,392	1,266	1,126	2,205	683	1,522
Yuba	75,748	76,782	1,034	1.37	1,170	609	561	473	128	345
California	38,913,507	39,127,855	214,348	0.55	489,165	260,232	228,933	-14,585	162,453	-177,038

E-2. California County Population Estimates and Components of Change  
 Revised July 1, 2014 and Revised July 1, 2015  
 Table 7.

County	Total Population		Change 2014-2015		Components of Change					
	Revised July 1, 2014	Revised July 1, 2015	Number	Percent	Births	Deaths	Natural Increase	Net Migration	Net Immigration	Net Domestic Migration
Alameda	1,608,614	1,630,159	21,545	1.34	19,495	9,647	9,848	11,697	8,562	3,135
Alpine	1,199	1,201	2	0.17	5	12	-7	9	1	8
Amador	36,930	36,905	-25	-0.07	305	438	-133	108	19	89
Butte	227,830	229,359	1,529	0.67	2,474	2,307	167	1,362	198	1,164
Calaveras	45,423	45,414	-9	-0.02	356	466	-110	101	31	70
Colusa	21,414	21,455	41	0.19	275	140	135	-94	121	-215
Contra Costa	1,112,733	1,128,317	15,584	1.40	12,574	7,567	5,007	10,577	4,396	6,181
Del Norte	27,260	27,113	-147	-0.54	301	283	18	-165	12	-177
El Dorado	181,898	182,205	307	0.17	1,607	1,540	67	240	179	61
Fresno	963,010	970,859	7,849	0.82	15,653	6,582	9,071	-1,222	2,484	-3,706
Glenn	28,075	28,001	-74	-0.26	393	265	128	-202	57	-259
Humboldt	135,710	136,348	638	0.47	1,448	1,275	173	465	99	366
Imperial	178,967	179,952	985	0.55	3,294	1,043	2,251	-1,266	1,702	-2,968
Inyo	18,873	18,911	38	0.20	196	187	9	29	18	11
Kern	872,913	878,081	5,168	0.59	14,084	5,908	8,176	-3,008	2,177	-5,185
Kings	148,494	148,525	31	0.02	2,358	802	1,556	-1,525	280	-1,805
Lake	67,677	66,931	-746	-1.10	710	830	-120	-626	73	-699
Lassen	32,725	31,697	-1,028	-3.14	302	224	78	-1,106	14	-1,120
Los Angeles	10,052,498	10,083,826	31,328	0.31	128,562	60,610	67,952	-36,624	46,236	-82,860
Madera	152,611	152,897	286	0.19	2,295	1,048	1,247	-961	253	-1,214
Marin	263,335	263,964	629	0.24	2,301	1,952	349	280	546	-266
Mariposa	17,848	17,732	-116	-0.65	145	187	-42	-74	19	-93
Mendocino	90,108	90,198	90	0.10	1,022	846	176	-86	141	-227
Merced	265,556	267,099	1,543	0.58	4,101	1,674	2,427	-884	636	-1,520
Modoc	8,959	8,952	-7	-0.08	93	120	-27	20	4	16
Mono	13,717	13,548	-169	-1.23	157	40	117	-286	19	-305
Monterey	428,633	433,478	4,845	1.13	6,453	2,504	3,949	896	1,262	-366
Napa	140,461	140,955	494	0.35	1,463	1,118	345	149	383	-234
Nevada	100,370	100,456	86	0.09	827	1,022	-195	281	99	182
Orange	3,135,170	3,155,895	20,725	0.66	38,583	18,975	19,608	1,117	12,293	-11,176
Placer	372,407	376,215	3,808	1.02	3,653	3,063	590	3,218	513	2,705
Plumas	19,776	19,701	-75	-0.38	149	230	-81	6	14	-8
Riverside	2,291,648	2,313,162	21,514	0.94	30,541	15,760	14,781	6,733	5,668	1,065
Sacramento	1,485,006	1,502,821	17,815	1.20	19,780	11,157	8,623	9,192	5,955	3,237
San Benito	58,515	59,220	705	1.20	720	292	428	277	136	141
San Bernardino	2,104,497	2,119,575	15,078	0.72	31,287	13,284	18,003	-2,925	5,271	-8,196
San Diego	3,228,488	3,248,371	19,883	0.62	44,450	20,528	23,922	-4,039	13,809	-17,848
San Francisco	848,474	857,037	8,563	1.01	9,104	5,634	3,470	5,093	6,102	-1,009
San Joaquin	718,498	729,411	10,913	1.52	9,978	5,375	4,603	6,310	2,630	3,680
San Luis Obispo	278,887	279,800	913	0.33	2,597	2,308	289	624	277	347
San Mateo	755,016	761,484	6,468	0.86	9,173	4,745	4,428	2,040	3,183	-1,143
Santa Barbara	438,421	442,188	3,767	0.86	5,809	3,013	2,796	971	952	19
Santa Clara	1,891,328	1,914,457	23,129	1.22	23,696	9,996	13,700	9,429	9,697	-268
Santa Cruz	272,386	274,762	2,376	0.87	2,981	1,714	1,267	1,109	567	542
Shasta	181,054	180,812	-242	-0.13	2,096	2,258	-162	-80	118	-198
Sierra	3,220	3,213	-7	-0.22	21	33	-12	5	1	4
Siskiyou	44,801	44,655	-146	-0.33	440	579	-139	-7	25	-32
Solano	431,153	435,902	4,749	1.10	5,281	3,148	2,133	2,616	1,282	1,334
Sonoma	498,151	500,553	2,402	0.48	5,067	4,007	1,060	1,342	962	380
Stanislaus	530,332	535,436	5,104	0.96	7,674	4,110	3,564	1,540	1,685	-145
Sutter	95,217	95,844	627	0.66	1,307	789	518	109	504	-395
Tehama	63,161	63,509	348	0.55	816	606	210	138	48	90
Trinity	14,151	14,228	77	0.54	102	152	-50	127	5	122
Tulare	456,558	459,935	3,377	0.74	7,509	2,989	4,520	-1,143	1,100	-2,243
Tuolumne	55,095	55,104	9	0.02	471	629	-158	167	36	131
Ventura	846,966	850,038	3,072	0.36	10,316	5,648	4,668	-1,596	1,935	-3,531
Yolo	207,708	209,893	2,185	1.05	2,410	1,286	1,124	1,061	695	366
Yuba	74,877	75,748	871	1.16	1,196	588	608	263	117	146
California	38,644,802	38,913,507	268,705	0.70	500,456	253,533	246,923	21,782	145,601	-123,819

E-2. California County Population Estimates and Components of Change  
 Revised July 1, 2013 and Revised July 1, 2014  
 Table 8.

County	Total Population		Change 2013-2014		Components of Change					
	Revised July 1, 2013	Revised July 1, 2014	Number	Percent	Births	Deaths	Natural Increase	Net Migration	Net Immigration	Net Domestic Migration
Alameda	1,584,064	1,608,614	24,550	1.55	19,486	9,302	10,184	14,366	8,744	5,622
Alpine	1,193	1,199	6	0.50	6	9	-3	9	0	9
Amador	36,561	36,930	369	1.01	287	422	-135	504	11	493
Butte	225,544	227,830	2,286	1.01	2,501	2,152	349	1,937	191	1,746
Calaveras	45,429	45,423	-6	-0.01	365	471	-106	100	14	86
Colusa	21,464	21,414	-50	-0.23	309	142	167	-217	43	-260
Contra Costa	1,098,192	1,112,733	14,541	1.32	12,239	7,225	5,014	9,527	3,830	5,697
Del Norte	27,589	27,260	-329	-1.19	309	270	39	-368	30	-398
El Dorado	181,963	181,898	-65	-0.04	1,609	1,391	218	-283	145	-428
Fresno	955,481	963,010	7,529	0.79	15,849	6,305	9,544	-2,015	2,102	-4,117
Glenn	28,014	28,075	61	0.22	406	269	137	-76	50	-126
Humboldt	135,676	135,710	34	0.03	1,479	1,332	147	-113	76	-189
Imperial	177,312	178,967	1,655	0.93	3,166	1,031	2,135	-480	1,332	-1,812
Inyo	18,761	18,873	112	0.60	239	200	39	73	14	59
Kern	867,036	872,913	5,877	0.68	14,085	5,630	8,455	-2,578	1,885	-4,463
Kings	149,667	148,494	-1,173	-0.78	2,297	814	1,483	-2,656	251	-2,907
Lake	67,300	67,677	377	0.56	768	817	-49	426	63	363
Lassen	33,040	32,725	-315	-0.95	320	225	95	-410	16	-426
Los Angeles	10,012,612	10,052,498	39,886	0.40	129,380	58,098	71,282	-31,396	42,818	-74,214
Madera	151,234	152,611	1,377	0.91	2,259	1,037	1,222	155	230	-75
Marin	260,645	263,335	2,690	1.03	2,428	1,878	550	2,140	487	1,653
Mariposa	17,937	17,848	-89	-0.50	158	185	-27	-62	8	-70
Mendocino	89,346	90,108	762	0.85	1,054	835	219	543	104	439
Merced	263,324	265,556	2,232	0.85	4,211	1,618	2,593	-361	567	-928
Modoc	9,049	8,959	-90	-0.99	73	110	-37	-53	2	-55
Mono	13,724	13,717	-7	-0.05	156	56	100	-107	20	-127
Monterey	426,355	428,633	2,278	0.53	6,455	2,391	4,064	-1,786	1,262	-3,048
Napa	139,378	140,461	1,083	0.78	1,481	1,161	320	763	368	395
Nevada	99,393	100,370	977	0.98	860	970	-110	1,087	81	1,006
Orange	3,112,757	3,135,170	22,413	0.72	37,874	18,400	19,474	2,939	12,103	-9,164
Placer	368,023	372,407	4,384	1.19	3,722	2,912	810	3,574	549	3,025
Plumas	19,817	19,776	-41	-0.21	159	229	-70	29	6	23
Riverside	2,268,362	2,291,648	23,286	1.03	30,327	14,957	15,370	7,916	4,877	3,039
Sacramento	1,465,450	1,485,006	19,556	1.33	19,644	10,784	8,860	10,696	5,652	5,044
San Benito	57,730	58,515	785	1.36	725	304	421	364	81	283
San Bernardino	2,088,642	2,104,497	15,855	0.76	30,670	12,912	17,758	-1,903	4,380	-6,283
San Diego	3,197,269	3,228,488	31,219	0.98	44,219	19,922	24,297	6,922	13,042	-6,120
San Francisco	840,311	848,474	8,163	0.97	8,949	5,461	3,488	4,675	6,311	-1,636
San Joaquin	707,552	718,498	10,946	1.55	9,918	5,113	4,805	6,141	2,527	3,614
San Luis Obispo	276,018	278,887	2,869	1.04	2,630	2,239	391	2,478	254	2,224
San Mateo	748,241	755,016	6,775	0.91	8,942	4,498	4,444	2,331	3,280	-949
Santa Barbara	434,421	438,421	4,000	0.92	5,758	2,997	2,761	1,239	828	411
Santa Clara	1,867,932	1,891,328	23,396	1.25	23,411	9,447	13,964	9,432	9,977	-545
Santa Cruz	271,320	272,386	1,066	0.39	2,892	1,730	1,162	-96	508	-604
Shasta	180,304	181,054	750	0.42	2,142	2,152	-10	760	115	645
Sierra	3,230	3,220	-10	-0.31	17	41	-24	14	2	12
Siskiyou	44,820	44,801	-19	-0.04	460	506	-46	27	25	2
Solano	425,587	431,153	5,566	1.31	5,252	3,003	2,249	3,317	1,114	2,203
Sonoma	494,852	498,151	3,299	0.67	4,992	3,968	1,024	2,275	881	1,394
Stanislaus	527,012	530,332	3,320	0.63	7,490	3,909	3,581	-261	1,326	-1,587
Sutter	95,909	95,217	-692	-0.72	1,294	731	563	-1,255	619	-1,874
Tehama	63,021	63,161	140	0.22	808	646	162	-22	59	-81
Trinity	14,058	14,151	93	0.66	109	163	-54	147	4	143
Tulare	453,765	456,558	2,793	0.62	7,579	2,844	4,735	-1,942	844	-2,786
Tuolumne	55,321	55,095	-226	-0.41	459	671	-212	-14	15	-29
Ventura	842,775	846,966	4,191	0.50	10,327	5,338	4,989	-798	1,661	-2,459
Yolo	206,723	207,708	985	0.48	2,470	1,169	1,301	-316	695	-1,011
Yuba	74,137	74,877	740	1.00	1,197	572	625	115	109	6
California	38,342,642	38,644,802	302,160	0.79	498,671	243,964	254,707	47,453	136,588	-89,135

E-2. California County Population Estimates and Components of Change  
 Revised July 1, 2012 and Revised July 1, 2013  
 Table 9.

County	Total Population		Change 2012-2013		Components of Change					
	Revised July 1, 2012	Revised July 1, 2013	Number	Percent	Births	Deaths	Natural Increase	Net Migration	Net Immigration	Net Domestic Migration
Alameda	1,560,713	1,584,064	23,351	1.50	19,464	9,668	9,796	13,555	7,822	5,733
Alpine	1,186	1,193	7	0.59	7	9	-2	9	0	9
Amador	36,903	36,561	-342	-0.93	254	418	-164	-178	22	-200
Butte	224,316	225,544	1,228	0.55	2,320	2,281	39	1,189	191	998
Calaveras	45,512	45,429	-83	-0.18	325	514	-189	106	19	87
Colusa	21,406	21,464	58	0.27	315	124	191	-133	57	-190
Contra Costa	1,082,513	1,098,192	15,679	1.45	12,241	7,265	4,976	10,703	3,667	7,036
Del Norte	28,038	27,589	-449	-1.60	333	270	63	-512	8	-520
El Dorado	180,978	181,963	985	0.54	1,494	1,326	168	817	208	609
Fresno	949,363	955,481	6,118	0.64	15,721	6,514	9,207	-3,089	2,282	-5,371
Glenn	28,009	28,014	5	0.02	385	209	176	-171	29	-200
Humboldt	135,500	135,676	176	0.13	1,541	1,274	267	-91	70	-161
Imperial	177,385	177,312	-73	-0.04	3,012	984	2,028	-2,101	1,637	-3,738
Inyo	18,702	18,761	59	0.32	212	196	16	43	14	29
Kern	858,439	867,036	8,597	1.00	14,416	5,642	8,774	-177	1,889	-2,066
Kings	149,766	149,667	-99	-0.07	2,464	801	1,663	-1,762	268	-2,030
Lake	67,017	67,300	283	0.42	740	826	-86	369	50	319
Lassen	33,533	33,040	-493	-1.47	284	220	64	-557	18	-575
Los Angeles	9,970,512	10,012,612	42,100	0.42	130,647	60,119	70,528	-28,428	42,612	-71,040
Madera	150,285	151,234	949	0.63	2,288	1,048	1,240	-291	239	-530
Marin	257,455	260,645	3,190	1.24	2,321	1,882	439	2,751	497	2,254
Mariposa	18,072	17,937	-135	-0.75	136	205	-69	-66	16	-82
Mendocino	88,936	89,346	410	0.46	1,061	836	225	185	120	65
Merced	262,303	263,324	1,021	0.39	4,188	1,612	2,576	-1,555	587	-2,142
Modoc	9,341	9,049	-292	-3.13	80	111	-31	-261	10	-271
Mono	13,982	13,724	-258	-1.85	137	53	84	-342	20	-362
Monterey	424,445	426,355	1,910	0.45	6,562	2,466	4,096	-2,186	1,281	-3,467
Napa	138,859	139,378	519	0.37	1,410	1,239	171	348	358	-10
Nevada	99,264	99,393	129	0.13	802	1,016	-214	343	73	270
Orange	3,087,846	3,112,757	24,911	0.81	37,616	18,780	18,836	6,075	11,854	-5,779
Placer	362,839	368,023	5,184	1.43	3,688	2,832	856	4,328	566	3,762
Plumas	19,914	19,817	-97	-0.49	146	260	-114	17	13	4
Riverside	2,249,295	2,268,362	19,067	0.85	29,937	15,001	14,936	4,131	5,190	-1,059
Sacramento	1,453,048	1,465,450	12,402	0.85	19,401	10,486	8,915	3,487	4,565	-1,078
San Benito	57,055	57,730	675	1.18	739	322	417	258	130	128
San Bernardino	2,076,903	2,088,642	11,739	0.57	30,555	12,744	17,811	-6,072	4,426	-10,498
San Diego	3,169,100	3,197,269	28,169	0.89	43,746	20,751	22,995	5,174	11,974	-6,800
San Francisco	831,468	840,311	8,843	1.06	9,093	5,747	3,346	5,497	5,812	-315
San Joaquin	701,991	707,552	5,561	0.79	10,047	4,957	5,090	471	2,124	-1,653
San Luis Obispo	274,697	276,018	1,321	0.48	2,628	2,262	366	955	235	720
San Mateo	740,804	748,241	7,437	1.00	9,067	4,702	4,365	3,072	3,259	-187
Santa Barbara	430,232	434,421	4,189	0.97	5,701	2,990	2,711	1,478	796	682
Santa Clara	1,842,698	1,867,932	25,234	1.37	24,170	9,449	14,721	10,513	8,902	1,611
Santa Cruz	268,525	271,320	2,795	1.04	2,982	1,730	1,252	1,543	589	954
Shasta	179,341	180,304	963	0.54	2,106	2,071	35	928	96	832
Sierra	3,234	3,230	-4	-0.12	20	39	-19	15	0	15
Siskiyou	44,909	44,820	-89	-0.20	457	570	-113	24	17	7
Solano	420,979	425,587	4,608	1.09	5,142	2,926	2,216	2,392	1,109	1,283
Sonoma	490,398	494,852	4,454	0.91	5,067	3,895	1,172	3,282	845	2,437
Stanislaus	523,837	527,012	3,175	0.61	7,503	3,844	3,659	-484	1,211	-1,695
Sutter	94,816	95,909	1,093	1.15	1,227	732	495	598	463	135
Tehama	63,192	63,021	-171	-0.27	727	707	20	-191	70	-261
Trinity	13,987	14,058	71	0.51	118	155	-37	108	6	102
Tulare	451,114	453,765	2,651	0.59	7,764	2,850	4,914	-2,263	950	-3,213
Tuolumne	54,638	55,321	683	1.25	461	600	-139	822	30	792
Ventura	837,333	842,775	5,442	0.65	10,529	5,366	5,163	279	1,862	-1,583
Yolo	205,138	206,723	1,585	0.77	2,505	1,282	1,223	362	564	-202
Yuba	73,721	74,137	416	0.56	1,230	582	648	-232	95	-327
California	38,055,785	38,342,642	286,857	0.75	499,532	247,760	251,772	35,085	131,817	-96,732

E-2. California County Population Estimates and Components of Change  
 Revised July 1, 2011 and Revised July 1, 2012  
 Table 10.

County	Total Population		Change 2011-2012		Components of Change					
	Revised July 1, 2011	Revised July 1, 2012	Number	Percent	Births	Deaths	Natural Increase	Net Migration	Net Immigration	Net Domestic Migration
Alameda	1,535,986	1,560,713	24,727	1.61	18,972	9,252	9,720	15,007	7,515	7,492
Alpine	1,181	1,186	5	0.42	5	9	-4	9	0	9
Amador	37,122	36,903	-219	-0.59	279	427	-148	-71	14	-85
Butte	222,149	224,316	2,167	0.98	2,399	2,229	170	1,997	203	1,794
Calaveras	45,519	45,512	-7	-0.02	354	463	-109	102	21	81
Colusa	21,356	21,406	50	0.23	302	147	155	-105	118	-223
Contra Costa	1,068,330	1,082,513	14,183	1.33	11,936	6,967	4,969	9,214	3,214	6,000
Del Norte	28,261	28,038	-223	-0.79	324	280	44	-267	13	-280
El Dorado	180,832	180,978	146	0.08	1,597	1,420	177	-31	203	-234
Fresno	941,793	949,363	7,570	0.80	15,946	6,251	9,695	-2,125	2,227	-4,352
Glenn	28,219	28,009	-210	-0.74	374	240	134	-344	87	-431
Humboldt	135,810	135,500	-310	-0.23	1,435	1,280	155	-465	73	-538
Imperial	176,872	177,385	513	0.29	3,014	961	2,053	-1,540	1,493	-3,033
Inyo	18,624	18,702	78	0.42	230	197	33	45	16	29
Kern	850,117	858,439	8,322	0.98	14,204	5,228	8,976	-654	1,892	-2,546
Kings	151,488	149,766	-1,722	-1.14	2,394	813	1,581	-3,303	275	-3,578
Lake	66,259	67,017	758	1.14	727	846	-119	877	53	824
Lassen	34,813	33,533	-1,280	-3.68	301	271	30	-1,310	13	-1,323
Los Angeles	9,893,861	9,970,512	76,651	0.77	129,120	57,898	71,222	5,429	39,685	-34,256
Madera	151,338	150,285	-1,053	-0.70	2,376	1,045	1,331	-2,384	253	-2,637
Marin	255,411	257,455	2,044	0.80	2,323	1,868	455	1,589	461	1,128
Mariposa	18,157	18,072	-85	-0.47	142	156	-14	-71	14	-85
Mendocino	87,826	88,936	1,110	1.26	1,122	802	320	790	116	674
Merced	259,700	262,303	2,603	1.00	4,303	1,580	2,723	-120	618	-738
Modoc	9,479	9,341	-138	-1.46	74	126	-52	-86	8	-94
Mono	14,243	13,982	-261	-1.83	146	54	92	-353	24	-377
Monterey	420,251	424,445	4,194	1.00	6,808	2,384	4,424	-230	1,324	-1,554
Napa	137,468	138,859	1,391	1.01	1,529	1,120	409	982	349	633
Nevada	99,222	99,264	42	0.04	772	964	-192	234	49	185
Orange	3,053,035	3,087,846	34,811	1.14	37,831	17,790	20,041	14,770	11,409	3,361
Placer	357,478	362,839	5,361	1.50	3,695	2,770	925	4,436	457	3,979
Plumas	19,951	19,914	-37	-0.19	157	201	-44	7	4	3
Riverside	2,228,172	2,249,295	21,123	0.95	30,089	14,584	15,505	5,618	5,202	416
Sacramento	1,439,148	1,453,048	13,900	0.97	19,530	10,513	9,017	4,883	4,591	292
San Benito	56,264	57,055	791	1.41	715	276	439	352	102	250
San Bernardino	2,066,286	2,076,903	10,617	0.51	30,148	12,090	18,058	-7,441	4,406	-11,847
San Diego	3,135,440	3,169,100	33,660	1.07	43,821	19,858	23,963	9,697	12,491	-2,794
San Francisco	819,178	831,468	12,290	1.50	8,778	5,527	3,251	9,039	5,795	3,244
San Joaquin	695,749	701,991	6,242	0.90	10,081	4,957	5,124	1,118	2,306	-1,188
San Luis Obispo	271,693	274,697	3,004	1.11	2,626	2,262	364	2,640	267	2,373
San Mateo	729,569	740,804	11,235	1.54	9,009	4,636	4,373	6,862	3,018	3,844
Santa Barbara	425,671	430,232	4,561	1.07	5,638	2,888	2,750	1,811	872	939
Santa Clara	1,815,327	1,842,698	27,371	1.51	23,413	9,280	14,133	13,238	8,975	4,263
Santa Cruz	265,932	268,525	2,593	0.98	3,162	1,678	1,484	1,109	662	447
Shasta	178,344	179,341	997	0.56	2,056	2,003	53	944	84	860
Sierra	3,237	3,234	-3	-0.09	21	31	-10	7	1	6
Siskiyou	44,912	44,909	-3	-0.01	495	522	-27	24	23	1
Solano	416,924	420,979	4,055	0.97	5,066	2,875	2,191	1,864	1,158	706
Sonoma	487,533	490,398	2,865	0.59	5,044	3,823	1,221	1,644	895	749
Stanislaus	519,341	523,837	4,496	0.87	7,694	3,787	3,907	589	1,372	-783
Sutter	94,528	94,816	288	0.30	1,320	725	595	-307	436	-743
Tehama	63,251	63,192	-59	-0.09	720	630	90	-149	63	-212
Trinity	13,877	13,987	110	0.79	116	145	-29	139	2	137
Tulare	447,272	451,114	3,842	0.86	8,019	2,820	5,199	-1,357	987	-2,344
Tuolumne	55,353	54,638	-715	-1.29	462	619	-157	-558	13	-571
Ventura	832,547	837,333	4,786	0.57	10,524	5,005	5,519	-733	1,883	-2,616
Yolo	202,754	205,138	2,384	1.18	2,318	1,163	1,155	1,229	523	706
Yuba	73,140	73,721	581	0.79	1,218	529	689	-108	84	-192
California	37,703,593	38,055,785	352,192	0.93	497,274	239,265	258,009	94,183	128,412	-34,229



E-2. California County Population Estimates and Components of Change  
 Revised July 1, 2010 and Revised July 1, 2011  
 Table 11.

County	Total Population		Change 2010-2011		Components of Change					
	Revised July 1, 2010	Revised July 1, 2011	Number	Percent	Births	Deaths	Natural Increase	Net Migration	Net Immigration	Net Domestic Migration
Alameda	1,516,617	1,535,986	19,369	1.28	19,217	9,073	10,144	9,225	7,098	2,127
Alpine	1,177	1,181	4	0.34	4	9	-5	9	0	9
Amador	37,714	37,122	-592	-1.57	264	439	-175	-417	15	-432
Butte	220,619	222,149	1,530	0.69	2,440	2,154	286	1,244	149	1,095
Calaveras	45,565	45,519	-46	-0.10	334	455	-121	75	11	64
Colusa	21,322	21,356	34	0.16	337	176	161	-127	79	-206
Contra Costa	1,053,028	1,068,330	15,302	1.45	12,326	7,231	5,095	10,207	2,881	7,326
Del Norte	28,421	28,261	-160	-0.56	335	289	46	-206	6	-212
El Dorado	181,135	180,832	-303	-0.17	1,629	1,307	322	-625	163	-788
Fresno	932,842	941,793	8,951	0.96	16,312	5,975	10,337	-1,386	2,213	-3,599
Glenn	28,220	28,219	-1	0.00	423	231	192	-193	57	-250
Humboldt	135,187	135,810	623	0.46	1,546	1,176	370	253	80	173
Imperial	175,188	176,872	1,684	0.96	3,120	992	2,128	-444	1,556	-2,000
Inyo	18,560	18,624	64	0.34	193	196	-3	67	14	53
Kern	841,932	850,117	8,185	0.97	14,400	5,391	9,009	-824	1,693	-2,517
Kings	152,355	151,488	-867	-0.57	2,576	752	1,824	-2,691	269	-2,960
Lake	65,981	66,259	278	0.42	741	785	-44	322	38	284
Lassen	34,878	34,813	-65	-0.19	298	198	100	-165	12	-177
Los Angeles	9,842,625	9,893,861	51,236	0.52	132,578	57,961	74,617	-23,381	34,862	-58,243
Madera	150,123	151,338	1,215	0.81	2,438	1,007	1,431	-216	211	-427
Marin	252,750	255,411	2,661	1.05	2,382	1,828	554	2,107	417	1,690
Mariposa	18,228	18,157	-71	-0.39	148	156	-8	-63	11	-74
Mendocino	87,856	87,826	-30	-0.03	1,012	824	188	-218	125	-343
Merced	256,705	259,700	2,995	1.17	4,299	1,452	2,847	148	564	-416
Modoc	9,713	9,479	-234	-2.41	100	103	-3	-231	6	-237
Mono	14,011	14,243	232	1.66	153	37	116	116	17	99
Monterey	415,956	420,251	4,295	1.03	6,860	2,326	4,534	-239	1,542	-1,781
Napa	136,568	137,468	900	0.66	1,501	1,142	359	541	391	150
Nevada	98,834	99,222	388	0.39	770	952	-182	570	44	526
Orange	3,016,922	3,053,035	36,113	1.20	38,231	17,633	20,598	15,515	11,027	4,488
Placer	350,872	357,478	6,606	1.88	3,849	2,768	1,081	5,525	400	5,125
Plumas	19,985	19,951	-34	-0.17	169	224	-55	21	8	13
Riverside	2,197,839	2,228,172	30,333	1.38	30,990	14,402	16,588	13,745	4,538	9,207
Sacramento	1,423,634	1,439,148	15,514	1.09	20,189	10,225	9,964	5,550	3,961	1,589
San Benito	55,563	56,264	701	1.26	760	267	493	208	116	92
San Bernardino	2,044,954	2,066,286	21,332	1.04	31,427	12,185	19,242	2,090	3,803	-1,713
San Diego	3,103,511	3,135,440	31,929	1.03	44,664	19,624	25,040	6,889	11,065	-4,176
San Francisco	809,945	819,178	9,233	1.14	8,897	5,727	3,170	6,063	6,124	-61
San Joaquin	688,585	695,749	7,164	1.04	10,545	4,719	5,826	1,338	2,124	-786
San Luis Obispo	269,604	271,693	2,089	0.77	2,640	2,239	401	1,688	222	1,466
San Mateo	721,169	729,569	8,400	1.16	9,137	4,518	4,619	3,781	2,859	922
Santa Barbara	424,045	425,671	1,626	0.38	5,746	2,881	2,865	-1,239	739	-1,978
Santa Clara	1,790,845	1,815,327	24,482	1.37	24,019	9,135	14,884	9,598	8,670	928
Santa Cruz	262,828	265,932	3,104	1.18	3,239	1,689	1,550	1,554	568	986
Shasta	177,488	178,344	856	0.48	2,106	2,029	77	779	93	686
Sierra	3,236	3,237	1	0.03	18	35	-17	18	1	17
Siskiyou	44,859	44,912	53	0.12	462	532	-70	123	29	94
Solano	413,197	416,924	3,727	0.90	5,171	2,834	2,337	1,390	1,185	205
Sonoma	484,014	487,533	3,519	0.73	5,308	3,844	1,464	2,055	742	1,313
Stanislaus	516,536	519,341	2,805	0.54	7,781	3,650	4,131	-1,326	1,027	-2,353
Sutter	94,844	94,528	-316	-0.33	1,335	728	607	-923	548	-1,471
Tehama	63,386	63,251	-135	-0.21	733	617	116	-251	55	-306
Trinity	13,821	13,877	56	0.41	112	158	-46	102	4	98
Tulare	442,343	447,272	4,929	1.11	8,149	2,847	5,302	-373	912	-1,285
Tuolumne	55,313	55,353	40	0.07	442	602	-160	200	19	181
Ventura	825,009	832,547	7,538	0.91	11,005	5,059	5,946	1,592	1,795	-203
Yolo	202,503	202,754	251	0.12	2,422	1,209	1,213	-962	562	-1,524
Yuba	72,408	73,140	732	1.01	1,249	549	700	32	93	-61
California	37,363,368	37,703,593	340,225	0.91	509,531	237,546	271,985	68,240	117,813	-49,573



E-2. California County Numeric Change  
 Revised July 1, 2010 through Preliminary July 1, 2021  
 Table 13.

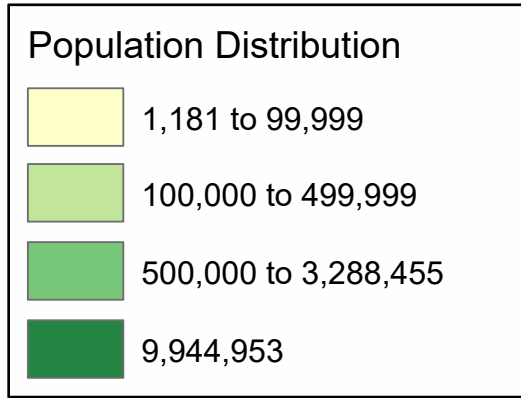
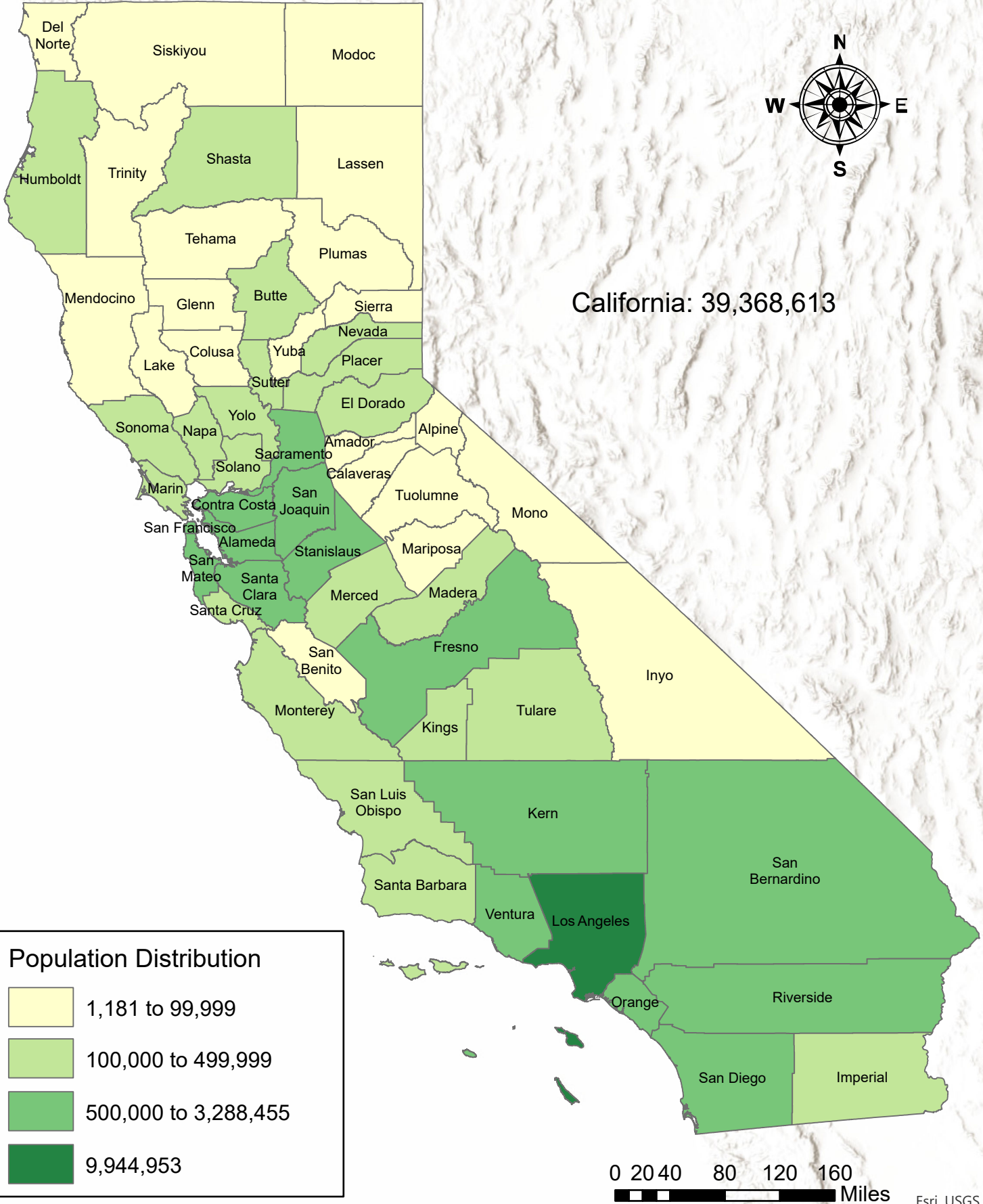
Numeric Population Change

County	2010-2011	2011-2012	2012-2013	2013-2014	2014-2015	2015-2016	2016-2017	2017-2018	2018-2019	2019-2020	2020-2021
Alameda	19,369	24,727	23,351	24,550	21,545	17,173	12,418	9,909	9,267	2,774	-9,959
Alpine	4	5	7	6	2	6	4	-3	-3	-6	-18
Amador	-592	-219	-342	369	-25	1,024	620	1,489	241	227	-190
Butte	1,530	2,167	1,228	2,286	1,529	1,322	2,399	1,547	-7,913	-15,498	-10,058
Calaveras	-46	-7	-83	-6	-9	-49	-11	11	-80	-8	-166
Colusa	34	50	58	-50	41	222	115	-102	55	81	233
Contra Costa	15,302	14,183	15,679	14,541	15,584	13,249	7,891	8,560	4,270	4,382	-2,904
Del Norte	-160	-223	-449	-329	-147	-43	-172	674	32	141	-216
El Dorado	-303	146	985	-65	307	732	1,863	2,322	783	3,377	710
Fresno	8,951	7,570	6,118	7,529	7,849	6,502	8,032	8,572	7,675	7,220	4,884
Glenn	-1	-210	5	61	-74	4	67	62	391	297	185
Humboldt	623	-310	176	34	638	998	146	1	-753	-226	-1,047
Imperial	1,684	513	-73	1,655	985	328	347	0	182	-2,272	-1,485
Inyo	64	78	59	112	38	45	-11	8	-6	30	-46
Kern	8,185	8,322	8,597	5,877	5,168	2,621	7,501	7,452	7,495	3,871	1,262
Kings	-867	-1,722	-99	-1,173	31	-910	1,318	2,107	651	1,394	532
Lake	278	758	283	377	-746	14	1,018	395	-244	-15	-17
Lassen	-65	-1,280	-493	-315	-1,028	612	346	281	-79	-832	-648
Los Angeles	51,236	76,651	42,100	39,886	31,328	16,032	14,778	-13,965	-36,820	-51,377	-67,521
Madera	1,215	-1,053	949	1,377	286	239	1,102	1,238	-185	1,228	135
Marin	2,661	2,044	3,190	2,690	629	1,217	-428	191	-1,027	-1,507	-1,994
Mariposa	-71	-85	-135	-89	-116	-88	-142	-157	-132	-90	-79
Mendocino	-30	1,110	410	762	90	823	588	117	1	-125	-796
Merced	2,995	2,603	1,021	2,232	1,543	1,602	3,909	2,261	3,286	2,716	2,320
Modoc	-234	-138	-292	-90	-7	-157	-104	64	-46	-6	-111
Mono	232	-261	-258	-7	-169	-159	-34	-133	5	-42	-112
Monterey	4,295	4,194	1,910	2,278	4,845	3,638	895	1,607	1,256	-1,866	695
Napa	900	1,391	519	1,083	494	134	-790	-741	-593	-532	-833
Nevada	388	42	129	977	86	463	465	536	378	94	-359
Orange	36,113	34,811	24,911	22,413	20,725	14,464	17,799	5,306	-2,099	-6,852	-22,832
Placer	6,606	5,361	5,184	4,384	3,808	5,795	6,763	6,904	5,994	3,637	3,736
Plumas	-34	-37	-97	-41	-75	-29	-30	-67	232	-141	-7
Riverside	30,333	21,123	19,067	23,286	21,514	24,536	24,297	21,778	16,762	20,945	10,167
Sacramento	15,514	13,900	12,402	19,556	17,815	17,580	16,116	18,151	16,250	14,748	365
San Benito	701	791	675	785	705	867	646	1,115	1,434	828	814
San Bernardino	21,332	10,617	11,739	15,855	15,078	12,546	15,170	12,745	14,401	7,546	-725
San Diego	31,929	33,660	28,169	31,219	19,883	15,146	12,596	17,237	922	9,464	-15,281
San Francisco	9,233	12,290	8,843	8,163	8,563	6,509	5,333	3,459	-133	-1,220	-15,435
San Joaquin	7,164	6,242	5,561	10,946	10,913	10,403	10,492	9,447	11,330	9,593	6,024
San Luis Obispo	2,089	3,004	1,321	2,869	913	1,881	422	849	-335	379	-4,389
San Mateo	8,400	11,235	7,437	6,775	6,468	2,586	1,531	1,110	-399	-2,815	-6,842
Santa Barbara	1,626	4,561	4,189	4,000	3,767	2,089	1,524	1,865	1,149	-156	-5,538
Santa Clara	24,482	27,371	25,234	23,396	23,129	11,457	7,033	5,038	-1,464	-3,005	-20,403
Santa Cruz	3,104	2,593	2,795	1,066	2,376	690	-713	-1,212	-1,345	178	-4,809
Shasta	856	997	963	750	-242	-525	808	377	-85	494	191
Sierra	1	-3	-4	-10	-7	7	13	-1	1	0	-16
Siskiyou	53	-3	-89	-19	-146	-101	-164	-85	-112	-102	-301
Solano	3,727	4,055	4,608	5,566	4,749	5,322	4,497	3,370	2,610	1,704	-873
Sonoma	3,519	2,865	4,454	3,299	2,402	1,436	-878	-4,242	-4,201	-2,788	-4,770
Stanislaus	2,805	4,496	3,175	3,320	5,104	5,420	5,643	3,045	2,022	2,429	-857
Sutter	-316	288	1,093	-692	627	673	1,254	1,563	1,712	-295	727
Tehama	-135	-59	-171	140	348	490	142	427	744	331	230
Trinity	56	110	71	93	77	612	658	256	300	81	-88
Tulare	4,929	3,842	2,651	2,793	3,377	2,288	3,120	2,313	2,963	2,863	1,516
Tuolumne	40	-715	683	-226	9	58	-130	279	5	184	-689
Ventura	7,538	4,786	5,442	4,191	3,072	189	-248	-456	-4,049	-929	-6,700
Yolo	251	2,384	1,585	985	2,185	3,331	1,848	1,402	-401	471	592
Yuba	732	581	416	740	871	1,034	1,399	862	1,207	1,218	623
California	340,225	352,192	286,857	302,160	268,705	214,348	201,071	147,138	53,502	12,220	(173,173)

E-2. California County Percent Change  
Revised July 1, 2010 through Preliminary July 1, 2021  
Table 14.

County	2010-2011	2011-2012	2012-2013	2013-2014	2014-2015	2015-2016	2016-2017	2017-2018	2018-2019	2019-2020	2020-2021
Alameda	1.3	1.6	1.5	1.5	1.3	1.1	0.8	0.6	0.6	0.2	-0.6
Alpine	0.3	0.4	0.6	0.5	0.2	0.5	0.3	-0.2	-0.2	-0.5	-1.5
Amador	-1.6	-0.6	-0.9	1.0	-0.1	2.8	1.6	3.9	0.6	0.6	-0.5
Butte	0.7	1.0	0.5	1.0	0.7	0.6	1.0	0.7	-3.4	-6.8	-4.8
Calaveras	-0.1	0.0	-0.2	0.0	0.0	-0.1	0.0	0.0	-0.2	0.0	-0.4
Colusa	0.2	0.2	0.3	-0.2	0.2	1.0	0.5	-0.5	0.3	0.4	1.1
Contra Costa	1.5	1.3	1.4	1.3	1.4	1.2	0.7	0.7	0.4	0.4	-0.3
Del Norte	-0.6	-0.8	-1.6	-1.2	-0.5	-0.2	-0.6	2.5	0.1	0.5	-0.8
El Dorado	-0.2	0.1	0.5	0.0	0.2	0.4	1.0	1.3	0.4	1.8	0.4
Fresno	1.0	0.8	0.6	0.8	0.8	0.7	0.8	0.9	0.8	0.7	0.5
Glenn	0.0	-0.7	0.0	0.2	-0.3	0.0	0.2	0.2	1.4	1.0	0.6
Humboldt	0.5	-0.2	0.1	0.0	0.5	0.7	0.1	0.0	-0.5	-0.2	-0.8
Imperial	1.0	0.3	0.0	0.9	0.6	0.2	0.2	0.0	0.1	-1.3	-0.8
Inyo	0.3	0.4	0.3	0.6	0.2	0.2	-0.1	0.0	0.0	0.2	-0.2
Kern	1.0	1.0	1.0	0.7	0.6	0.3	0.9	0.8	0.8	0.4	0.1
Kings	-0.6	-1.1	-0.1	-0.8	0.0	-0.6	0.9	1.4	0.4	0.9	0.4
Lake	0.4	1.1	0.4	0.6	-1.1	0.0	1.5	0.6	-0.4	0.0	0.0
Lassen	-0.2	-3.7	-1.5	-1.0	-3.1	1.9	1.1	0.9	-0.2	-2.5	-2.0
Los Angeles	0.5	0.8	0.4	0.4	0.3	0.2	0.1	-0.1	-0.4	-0.5	-0.7
Madera	0.8	-0.7	0.6	0.9	0.2	0.2	0.7	0.8	-0.1	0.8	0.1
Marin	1.1	0.8	1.2	1.0	0.2	0.5	-0.2	0.1	-0.4	-0.6	-0.8
Mariposa	-0.4	-0.5	-0.7	-0.5	-0.6	-0.5	-0.8	-0.9	-0.8	-0.5	-0.5
Mendocino	0.0	1.3	0.5	0.9	0.1	0.9	0.6	0.1	0.0	-0.1	-0.9
Merced	1.2	1.0	0.4	0.8	0.6	0.6	1.5	0.8	1.2	1.0	0.8
Modoc	-2.4	-1.5	-3.1	-1.0	-0.1	-1.8	-1.2	0.7	-0.5	-0.1	-1.3
Mono	1.7	-1.8	-1.8	-0.1	-1.2	-1.2	-0.3	-1.0	0.0	-0.3	-0.9
Monterey	1.0	1.0	0.4	0.5	1.1	0.8	0.2	0.4	0.3	-0.4	0.2
Napa	0.7	1.0	0.4	0.8	0.4	0.1	-0.6	-0.5	-0.4	-0.4	-0.6
Nevada	0.4	0.0	0.1	1.0	0.1	0.5	0.5	0.5	0.4	0.1	-0.4
Orange	1.2	1.1	0.8	0.7	0.7	0.5	0.6	0.2	-0.1	-0.2	-0.7
Placer	1.9	1.5	1.4	1.2	1.0	1.5	1.8	1.8	1.5	0.9	0.9
Plumas	-0.2	-0.2	-0.5	-0.2	-0.4	-0.1	-0.2	-0.3	1.2	-0.7	0.0
Riverside	1.4	0.9	0.8	1.0	0.9	1.1	1.0	0.9	0.7	0.9	0.4
Sacramento	1.1	1.0	0.9	1.3	1.2	1.2	1.1	1.2	1.0	0.9	0.0
San Benito	1.3	1.4	1.2	1.4	1.2	1.5	1.1	1.8	2.3	1.3	1.3
San Bernardino	1.0	0.5	0.6	0.8	0.7	0.6	0.7	0.6	0.7	0.3	0.0
San Diego	1.0	1.1	0.9	1.0	0.6	0.5	0.4	0.5	0.0	0.3	-0.5
San Francisco	1.1	1.5	1.1	1.0	1.0	0.8	0.6	0.4	0.0	-0.1	-1.8
San Joaquin	1.0	0.9	0.8	1.5	1.5	1.4	1.4	1.3	1.5	1.2	0.8
San Luis Obispo	0.8	1.1	0.5	1.0	0.3	0.7	0.1	0.3	-0.1	0.1	-1.6
San Mateo	1.2	1.5	1.0	0.9	0.9	0.3	0.2	0.1	-0.1	-0.4	-0.9
Santa Barbara	0.4	1.1	1.0	0.9	0.9	0.5	0.3	0.4	0.3	0.0	-1.2
Santa Clara	1.4	1.5	1.4	1.3	1.2	0.6	0.4	0.3	-0.1	-0.2	-1.1
Santa Cruz	1.2	1.0	1.0	0.4	0.9	0.3	-0.3	-0.4	-0.5	0.1	-1.8
Shasta	0.5	0.6	0.5	0.4	-0.1	-0.3	0.4	0.2	0.0	0.3	0.1
Sierra	0.0	-0.1	-0.1	-0.3	-0.2	0.2	0.4	0.0	0.0	0.0	-0.5
Siskiyou	0.1	0.0	-0.2	0.0	-0.3	-0.2	-0.4	-0.2	-0.3	-0.2	-0.7
Solano	0.9	1.0	1.1	1.3	1.1	1.2	1.0	0.8	0.6	0.4	-0.2
Sonoma	0.7	0.6	0.9	0.7	0.5	0.3	-0.2	-0.8	-0.8	-0.6	-1.0
Stanislaus	0.5	0.9	0.6	0.6	1.0	1.0	1.0	0.6	0.4	0.4	-0.2
Sutter	-0.3	0.3	1.2	-0.7	0.7	0.7	1.3	1.6	1.7	-0.3	0.7
Tehama	-0.2	-0.1	-0.3	0.2	0.6	0.8	0.2	0.7	1.2	0.5	0.4
Trinity	0.4	0.8	0.5	0.7	0.5	4.3	4.4	1.7	1.9	0.5	-0.6
Tulare	1.1	0.9	0.6	0.6	0.7	0.5	0.7	0.5	0.6	0.6	0.3
Tuolumne	0.1	-1.3	1.3	-0.4	0.0	0.1	-0.2	0.5	0.0	0.3	-1.2
Ventura	0.9	0.6	0.6	0.5	0.4	0.0	0.0	-0.1	-0.5	-0.1	-0.8
Yolo	0.1	1.2	0.8	0.5	1.1	1.6	0.9	0.7	-0.2	0.2	0.3
Yuba	1.0	0.8	0.6	1.0	1.2	1.4	1.8	1.1	1.5	1.5	0.8
<b>California</b>	<b>0.9</b>	<b>0.9</b>	<b>0.8</b>	<b>0.8</b>	<b>0.7</b>	<b>0.6</b>	<b>0.5</b>	<b>0.4</b>	<b>0.1</b>	<b>0.0</b>	<b>-0.4</b>

# July 1, 2021 Population Estimates Population Distribution by County

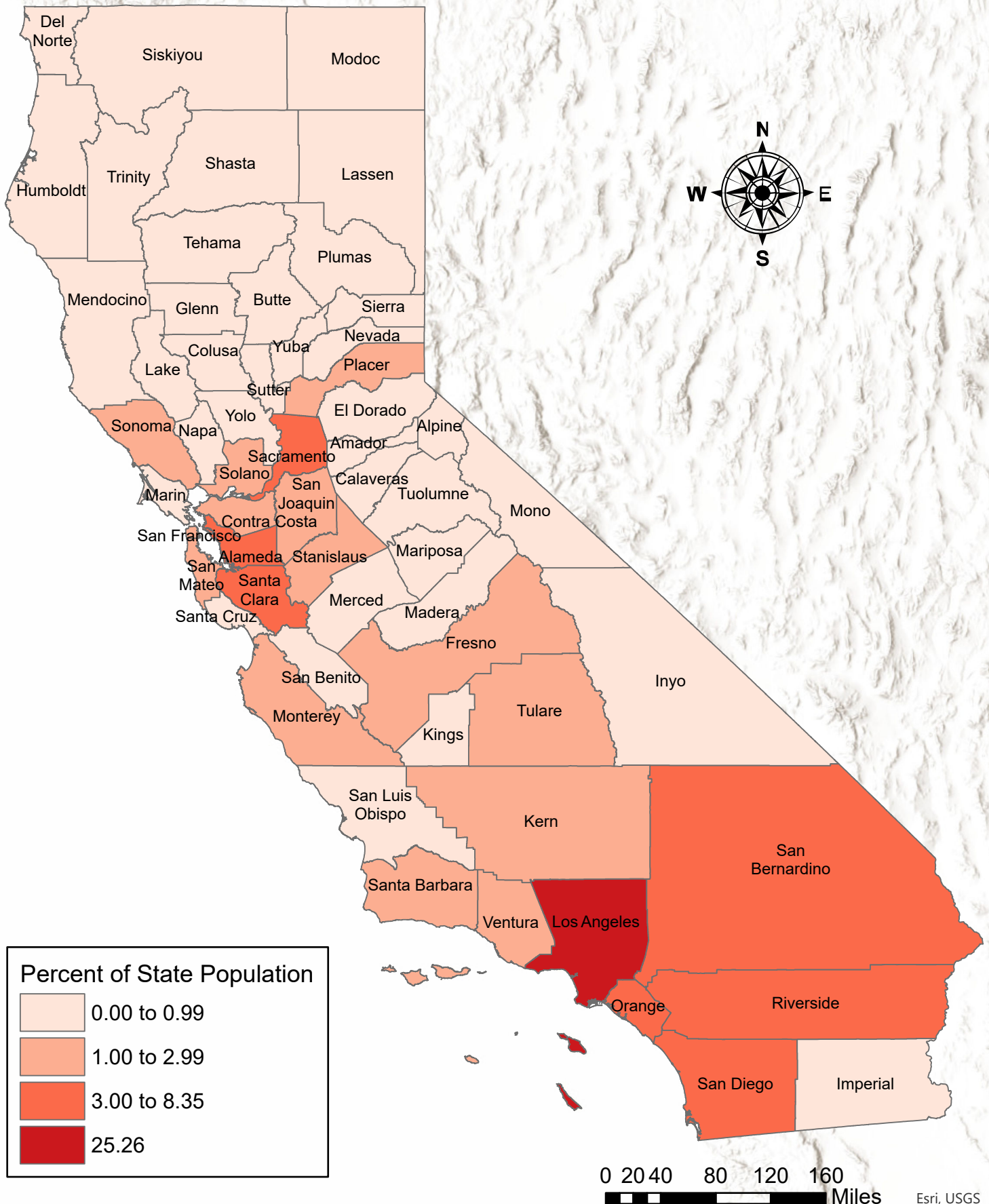


0 20 40 80 120 160 Miles

Esri, USGS

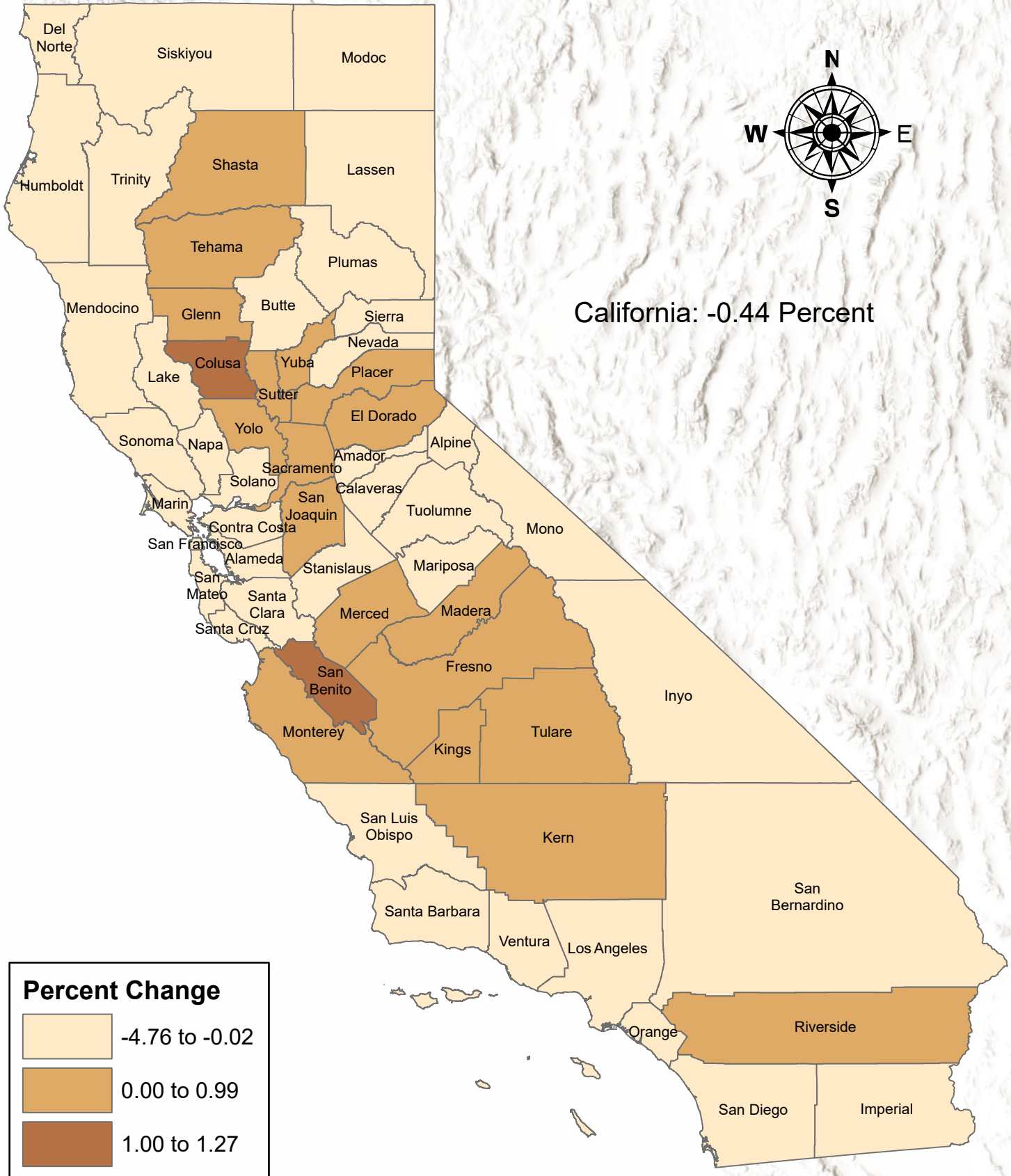
# July 1, 2021 Population Estimates

## County Percentage of California's Population



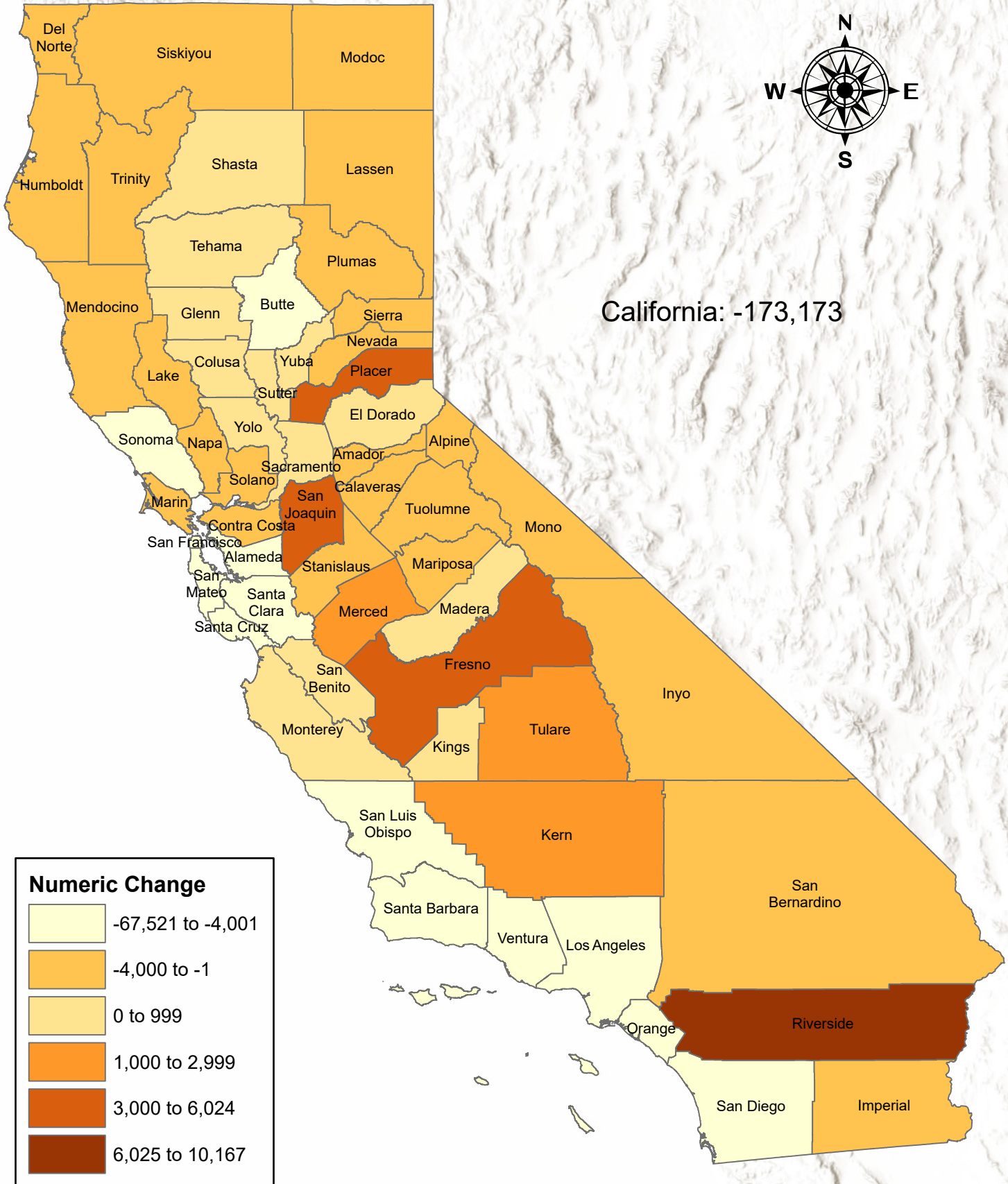


# July 1, 2020 to July 1, 2021 Population Estimates Percent Change



0 20 40 80 120 160 Miles Esri, USGS

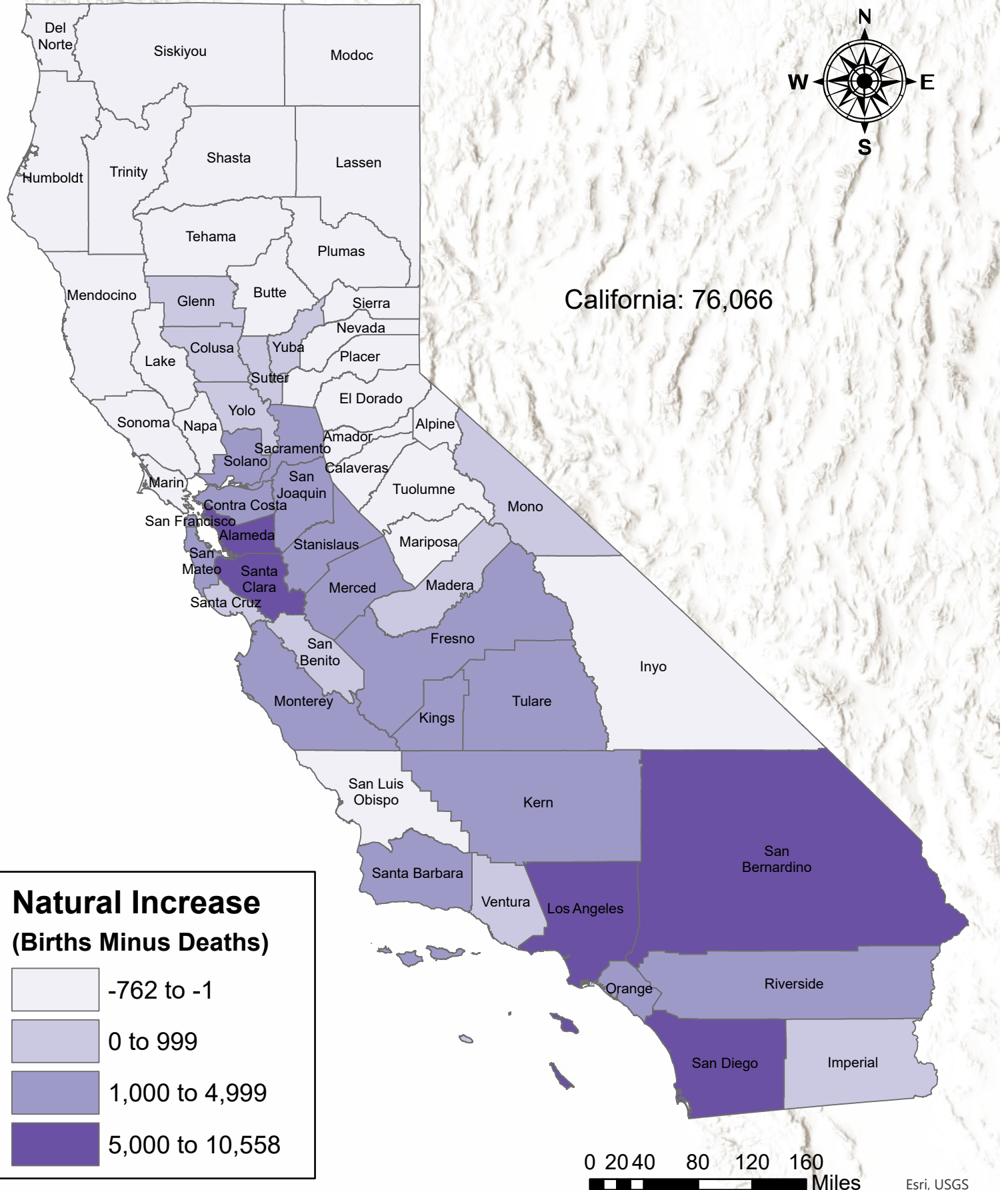
# July 1, 2020 to July 1, 2021 Population Estimates Numeric Change



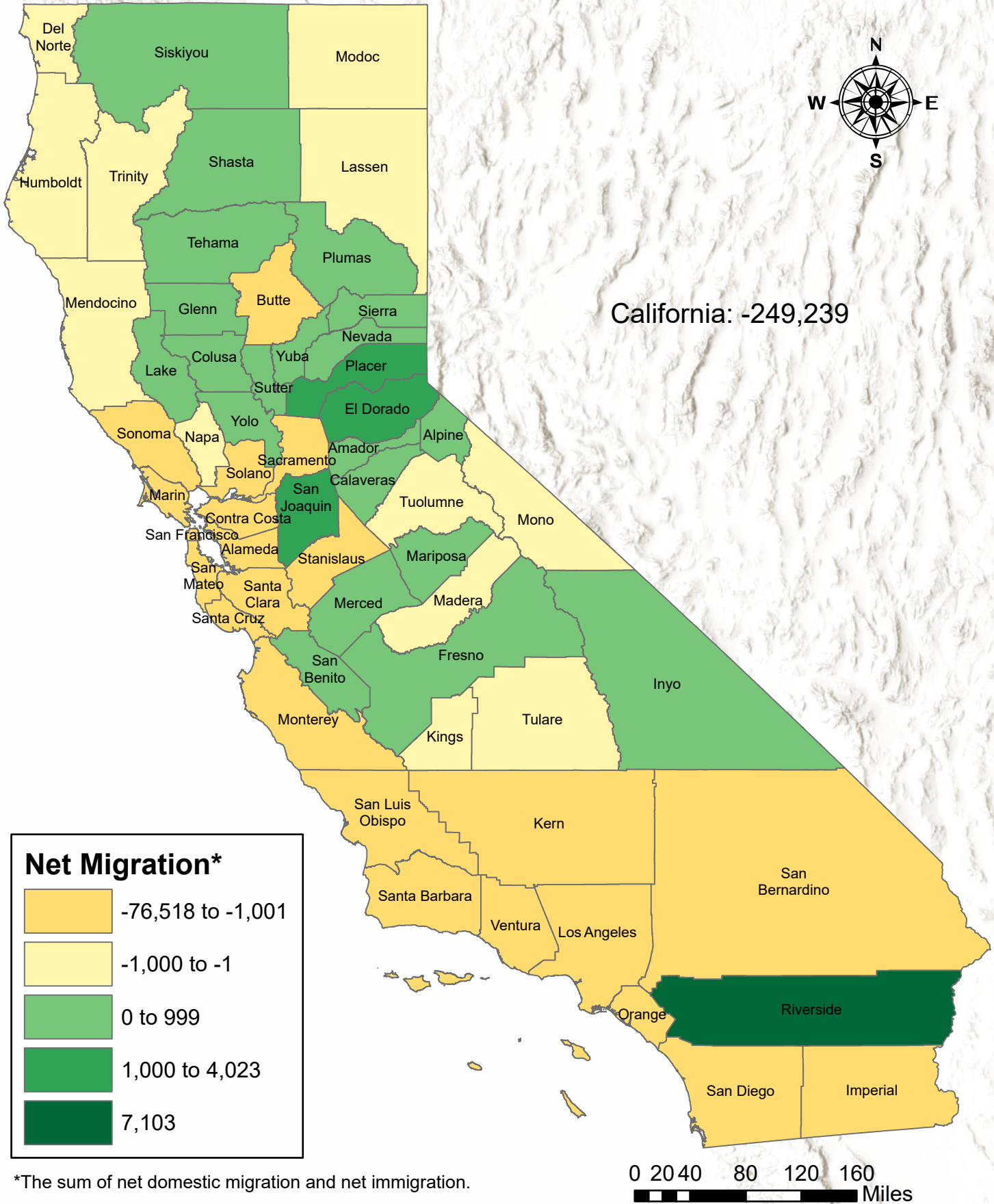
0 20 40 80 120 160 Miles Esri, USGS



# July 1, 2020 to July 1, 2021 Population Estimates Natural Increase



# July 1, 2020 to July 1, 2021 Population Estimates Net Migration



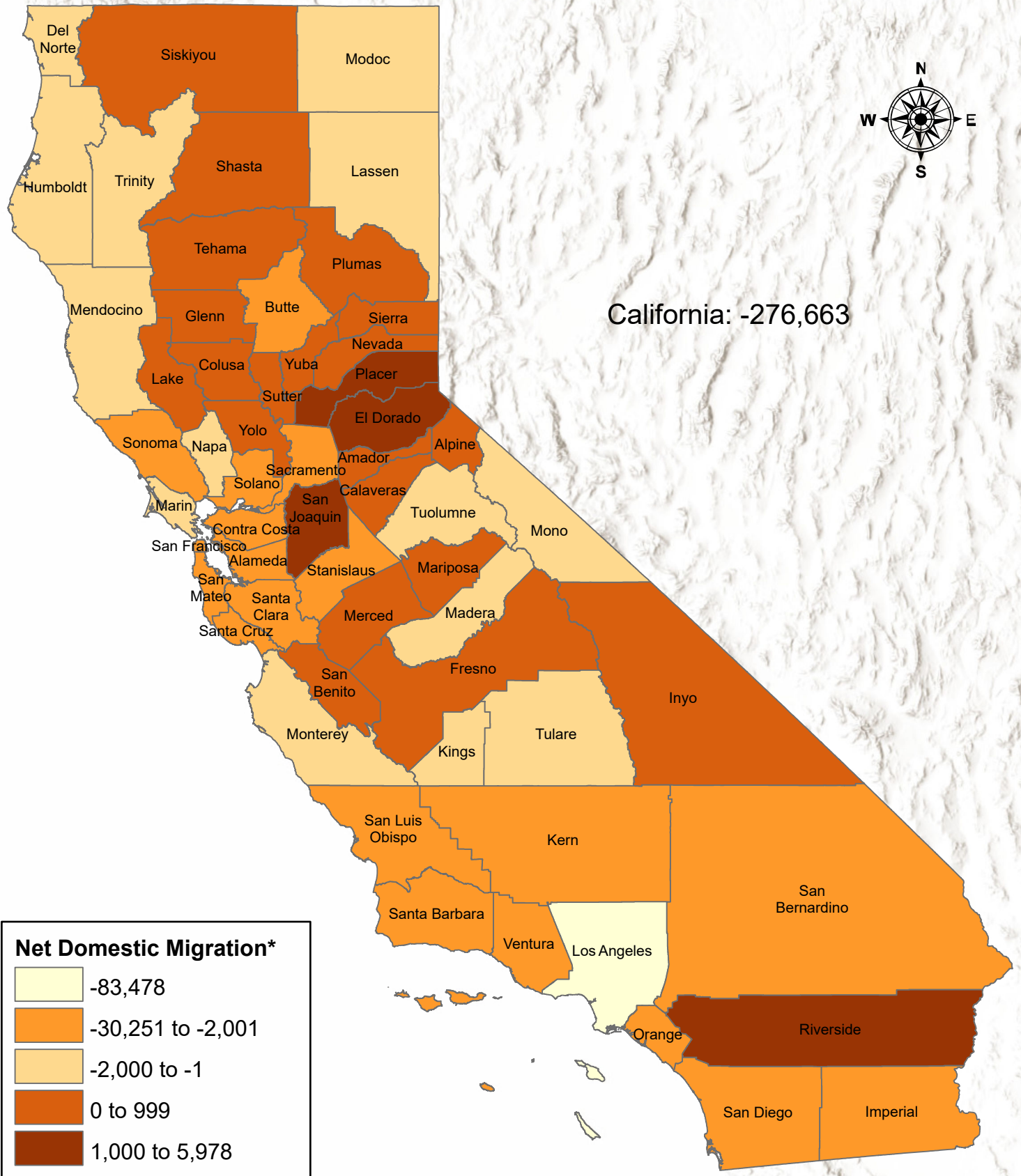
\*The sum of net domestic migration and net immigration.

Esri, USGS

Map prepared by: California Department of Finance, Demographic Research Unit, December 2021



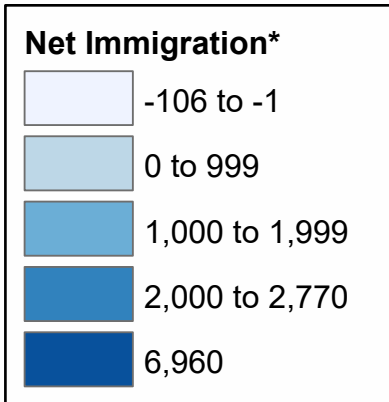
# July 1, 2020 to July 1, 2021 Population Estimates Net Domestic Migration



\*People moving to California from another U.S. state minus those moving out of California to another U.S. state.

0 20 40 80 120 160 Miles Esri, USGS

# July 1, 2020 to July 1, 2021 Population Estimates Net Immigration



\*Persons moving to California from a foreign country minus those leaving the state to live abroad.

