

1990 Census Mail Response Rates and Undercount
Data and Maps

1990 Census Mail Response Rates

The mail response rate is defined as the ratio of mail returns to the mail-out universe.

The denominator is the mail-out universe: the number of addresses that receive a questionnaire from either the United States Postal Service or Census Bureau staff. The mail-out universe includes occupied housing units, vacant units and nonexistent units. The numerator is mail returns: the number of these addresses for which the Census Bureau receives a questionnaire back through the mail. The mail response rate covers all of those questionnaires that are returned before the non-response follow-up universe is determined.

The mail response rate will be used by the Census Bureau in its "Plus Five" program to encourage people to return their Census 2000 form by mail. In the "Plus Five" program, Dr. Prewitt, the director of the Census Bureau, is challenging jurisdictions to increase their Census 2000 mail response rate by five percentage points over their 1990 rate.

1990 mail response rates are currently posted on the Census Bureau's website:

<http://www.census.gov/dmd/www/mailresp.html>

During Census 2000, the Census Bureau plans to post and continuously update local mail response rates.

For a detailed demographic analysis of response rates in the 1990 census, see the paper "Who Responds/Who Doesn't? Analyzing Variation in Mail Response Rates During the 1990 Census", by David L. Word, 1997. The full text of this paper is available at:

<http://www.census.gov/population/www/documentation/twps0019.html>

All jurisdictions do not have a mail response rate.

Mail response rates are calculated only for those areas of the country where either the U.S. Postal Service or Census Bureau staff deliver questionnaires to addresses prior to Census Day (April 1). In these areas, respondents complete the questionnaire and return it to the Census Bureau by mail. If a jurisdiction were enumerated solely by the list/enumerate methodology, i.e. a Census Bureau enumerator delivers the questionnaire to the address and personally interviews the household, writing the answers on the questionnaire, the mail response rate will not be displayed. Note also that the jurisdictional boundaries reflect 1990 definitions.

1990 Mail Response Rates

	Mail Response Rates
California	65%
Alameda County	65%
Alameda city	67%
Albany city	75%
Berkeley city	65%
Dublin city	72%
Emeryville city	51%
Fremont city	71%
Hayward city	64%
Livermore city	72%
Newark city	71%
Oakland city	57%
Piedmont city	85%
Pleasanton city	73%
San Leandro city	74%
Union City city	68%
Butte County	63%
Biggs city	46%
Chico city	57%
Gridley city	67%
Oroville city	59%
Paradise town	74%
Colusa County	58%
Colusa city	65%
Williams city	56%
Contra Costa County	71%
Antioch city	68%
Brentwood city	67%
Clayton city	81%
Concord city	73%
Danville city	73%
El Cerrito city	79%
Hercules city	69%
Lafayette city	81%
Martinez city	75%
Moraga Town city	86%
Orinda city	85%
Pinole city	76%
Pittsburg city	61%
Pleasant Hill city	73%
Richmond city	59%
San Pablo city	59%
San Ramon city	71%
Walnut Creek city	80%
El Dorado County	66%
Placerville city	65%
Fresno County	63%
Clovis city	66%

Coalinga city	57%
Firebaugh city	60%
Fowler city	66%
Fresno city	63%
Huron city	37%
Kerman city	67%
Kingsburg city	74%
Mendota city	49%
Orange Cove city	65%
Parlier city	57%
Reedley city	74%
Sanger city	69%
San Joaquin city	47%
Selma city	65%
Glenn County	62%
Orland city	64%
Willows city	68%
Humboldt County	66%
Arcata city	64%
Eureka city	64%
Fortuna city	70%
Imperial County	51%
Brawley city	54%
Calexico city	55%
Calipatria city	51%
El Centro city	59%
Holtville city	59%
Imperial city	64%
Westmorland city	37%
Inyo County	66%
Bishop city	59%
Kern County	60%
Arvin city	64%
Bakersfield city	62%
Delano city	58%
McFarland city	65%
Maricopa city	49%
Ridgecrest city	66%
Shafter city	60%
Taft city	64%
Wasco city	60%
Kings County	62%
Avenal city	51%
Corcoran city	61%
Hanford city	65%
Lemoore city	66%
Lake County	46%
Clearlake city	40%
Lakeport city	63%
Los Angeles County	64%
Agoura Hills city	75%
Alhambra city	70%

Arcadia city	71%
Artesia city	69%
Avalon city	0%
Azusa city	62%
Baldwin Park city	64%
Bell city	62%
Bellflower city	65%
Bell Gardens city	59%
Beverly Hills city	60%
Bradbury city	71%
Burbank city	69%
Carson city	69%
Cerritos city	80%
Claremont city	78%
Commerce city	69%
Compton city	49%
Covina city	69%
Cudahy city	58%
Culver City city	73%
Diamond Bar city	73%
Downey city	73%
Duarte city	73%
El Monte city	61%
El Segundo city	72%
Gardena city	65%
Glendale city	70%
Glendora city	68%
Hawaiian Gardens city	61%
Hawthorne city	55%
Hermosa Beach city	63%
Hidden Hills city	71%
Huntington Park city	62%
Industry city	28%
Inglewood city	53%
Irwindale city	53%
La Canada Flintridge city	85%
La Habra Heights city	78%
Lakewood city	77%
La Mirada city	79%
Lancaster city	59%
La Puente city	62%
La Verne city	76%
Lawndale city	58%
Lomita city	71%
Long Beach city	63%
Los Angeles city	60%
Lynwood city	59%
Manhattan Beach city	70%
Maywood city	61%
Monrovia city	67%
Montebello city	68%
Monterey Park city	73%

Norwalk city	73%
Palmdale city	58%
Palos Verdes Estates city	83%
Paramount city	61%
Pasadena city	68%
Pico Rivera city	72%
Pomona city	62%
Rancho Palos Verdes city	81%
Redondo Beach city	68%
Rolling Hills city	77%
Rolling Hills Estates city	82%
Rosemead city	70%
San Dimas city	69%
San Fernando city	67%
San Gabriel city	72%
San Marino city	85%
Santa Clarita city	69%
Santa Fe Springs city	73%
Santa Monica city	63%
Sierra Madre city	76%
Signal Hill city	62%
South El Monte city	61%
South Gate city	69%
South Pasadena city	75%
Temple City city	76%
Torrance city	75%
Vernon city	39%
Walnut city	72%
West Covina city	69%
West Hollywood city	57%
Westlake Village city	80%
Whittier city	67%
Madera County	60%
Chowchilla city	71%
Madera city	65%
Marin County	71%
Belvedere city	77%
Corte Madera town	79%
Fairfax town	70%
Larkspur city	77%
Mill Valley city	77%
Novato city	75%
Ross town	57%
San Anselmo town	74%
San Rafael city	70%
Sausalito city	63%
Tiburon town	78%
Mendocino County	59%
Fort Bragg city	57%
Point Arena city	49%
Ukiah city	70%
Willits city	66%

Merced County	66%
Atwater city	69%
Dos Palos city	65%
Gustine city	76%
Livingston city	64%
Los Banos city	71%
Merced city	67%
Monterey County	62%
Carmel-by-the-Sea city	30%
Del Rey Oaks city	78%
Gonzales city	57%
Greenfield city	60%
King City city	53%
Marina city	52%
Monterey city	69%
Pacific Grove city	73%
Salinas city	69%
Sand City city	48%
Seaside city	50%
Soledad city	68%
Napa County	70%
Calistoga city	64%
Napa city	72%
St. Helena city	72%
Yountville town	66%
Nevada County	64%
Grass Valley city	64%
Nevada City city	65%
Orange County	69%
Anaheim city	64%
Brea city	75%
Buena Park city	68%
Costa Mesa city	65%
Cypress city	78%
Dana Point city	60%
Fountain Valley city	77%
Fullerton city	72%
Garden Grove city	70%
Huntington Beach city	70%
Irvine city	72%
Laguna Beach city	62%
Laguna Niguel city	67%
La Habra city	72%
La Palma city	78%
Los Alamitos city	69%
Mission Viejo city	69%
Newport Beach city	64%
Orange city	73%
Placentia city	74%
San Clemente city	63%
San Juan Capistrano city	69%
Santa Ana city	61%

Seal Beach city	78%
Stanton city	63%
Tustin city	66%
Villa Park city	82%
Westminster city	73%
Yorba Linda city	77%
Placer County	68%
Auburn city	70%
Lincoln city	67%
Loomis town	66%
Rocklin city	68%
Roseville city	68%
Riverside County	59%
Banning city	61%
Beaumont city	58%
Blythe city	56%
Cathedral City city	46%
Coachella city	52%
Corona city	62%
Desert Hot Springs city	50%
Hemet city	66%
Indian Wells city	51%
Indio city	49%
Lake Elsinore city	55%
La Quinta city	48%
Moreno Valley city	60%
Norco city	71%
Palm Desert city	49%
Palm Springs city	48%
Perris city	58%
Rancho Mirage city	49%
Riverside city	64%
San Jacinto city	58%
Temecula city	61%
Sacramento County	66%
Folsom city	62%
Galt city	71%
Isleton city	55%
Sacramento city	64%
San Benito County	67%
Hollister city	71%
San Juan Bautista city	54%
San Bernardino County	63%
Apple Valley town	66%
Barstow city	59%
Chino city	68%
Colton city	54%
Fontana city	59%
Grand Terrace city	72%
Hesperia city	67%
Highland city	62%
Loma Linda city	58%

Montclair city	66%
Needles city	56%
Ontario city	61%
Rancho Cucamonga city	65%
Redlands city	73%
Rialto city	59%
San Bernardino city	59%
Upland city	69%
Victorville city	62%
Yucaipa city	73%
San Diego County	68%
Carlsbad city	70%
Chula Vista city	71%
Coronado city	66%
Del Mar city	64%
El Cajon city	68%
Encinitas city	70%
Escondido city	69%
Imperial Beach city	63%
La Mesa city	74%
Lemon Grove city	69%
National City city	63%
Oceanside city	66%
Poway city	78%
San Diego city	67%
San Marcos city	64%
Santee city	76%
Solana Beach city	64%
Vista city	62%
San Francisco County	64%
San Francisco city	64%
San Joaquin County	64%
Escalon city	74%
Lathrop city	60%
Lodi city	68%
Manteca city	66%
Ripon city	72%
Stockton city	62%
Tracy city	59%
San Luis Obispo County	68%
Arroyo Grande city	77%
Atascadero city	70%
El Paso de Robles (Paso Robles)	71%
Grover City city	71%
Morro Bay city	65%
Pismo Beach city	71%
San Luis Obispo city	71%
San Mateo County	70%
Atherton town	80%
Belmont city	77%
Brisbane city	63%
Burlingame city	73%

Colma town	43%
Daly City city	66%
East Palo Alto city	44%
Foster City city	73%
Half Moon Bay city	59%
Hillsborough town	81%
Menlo Park city	73%
Millbrae city	74%
Pacifica city	73%
Portola Valley town	81%
Redwood City city	68%
San Bruno city	70%
San Carlos city	79%
San Mateo city	72%
South San Francisco city	71%
Woodside town	74%
Santa Barbara County	69%
Carpinteria city	69%
Guadalupe city	68%
Lompoc city	67%
Santa Barbara city	71%
Santa Maria city	62%
Solvang city	69%
Santa Clara County	71%
Campbell city	71%
Cupertino city	74%
Gilroy city	68%
Los Altos city	86%
Los Altos Hills town	79%
Los Gatos town	72%
Milpitas city	74%
Monte Sereno city	82%
Morgan Hill city	71%
Mountain View city	70%
Palo Alto city	78%
San Jose city	69%
Santa Clara city	72%
Saratoga city	82%
Sunnyvale city	72%
Santa Cruz County	65%
Capitola city	63%
Santa Cruz city	69%
Scotts Valley city	76%
Watsonville city	66%
Shasta County	65%
Anderson city	65%
Redding city	65%
Solano County	67%
Benicia city	73%
Dixon city	73%
Fairfield city	67%
Rio Vista city	79%

Suisun City city	65%
Vacaville city	70%
Vallejo city	64%
Sonoma County	67%
Cloverdale city	69%
Cotati city	66%
Healdsburg city	75%
Petaluma city	75%
Rohnert Park city	68%
Santa Rosa city	73%
Sebastopol city	72%
Sonoma city	75%
Stanislaus County	64%
Ceres city	62%
Hughson city	61%
Modesto city	65%
Newman city	65%
Oakdale city	64%
Patterson city	67%
Riverbank city	67%
Turlock city	65%
Waterford city	57%
Sutter County	65%
Live Oak city	63%
Yuba City city	65%
Tehama County	60%
Corning city	62%
Red Bluff city	64%
Tehama city	57%
Tulare County	60%
Dinuba city	74%
Exeter city	71%
Farmersville city	62%
Lindsay city	62%
Porterville city	65%
Tulare city	60%
Visalia city	65%
Woodlake city	64%
Tuolumne County	59%
Sonora city	57%
Ventura County	76%
Camarillo city	80%
Fillmore city	75%
Moorpark city	79%
Ojai city	77%
Oxnard city	69%
Port Hueneme city	69%
San Buenaventura (Ventura) city	78%
Santa Paula city	77%
Simi Valley city	77%
Thousand Oaks city	80%
Yolo County	67%

Davis city	72%
West Sacramento city	62%
Winters city	68%
Woodland city	67%
Yuba County	58%
Marysville city	63%
Wheatland city	58%

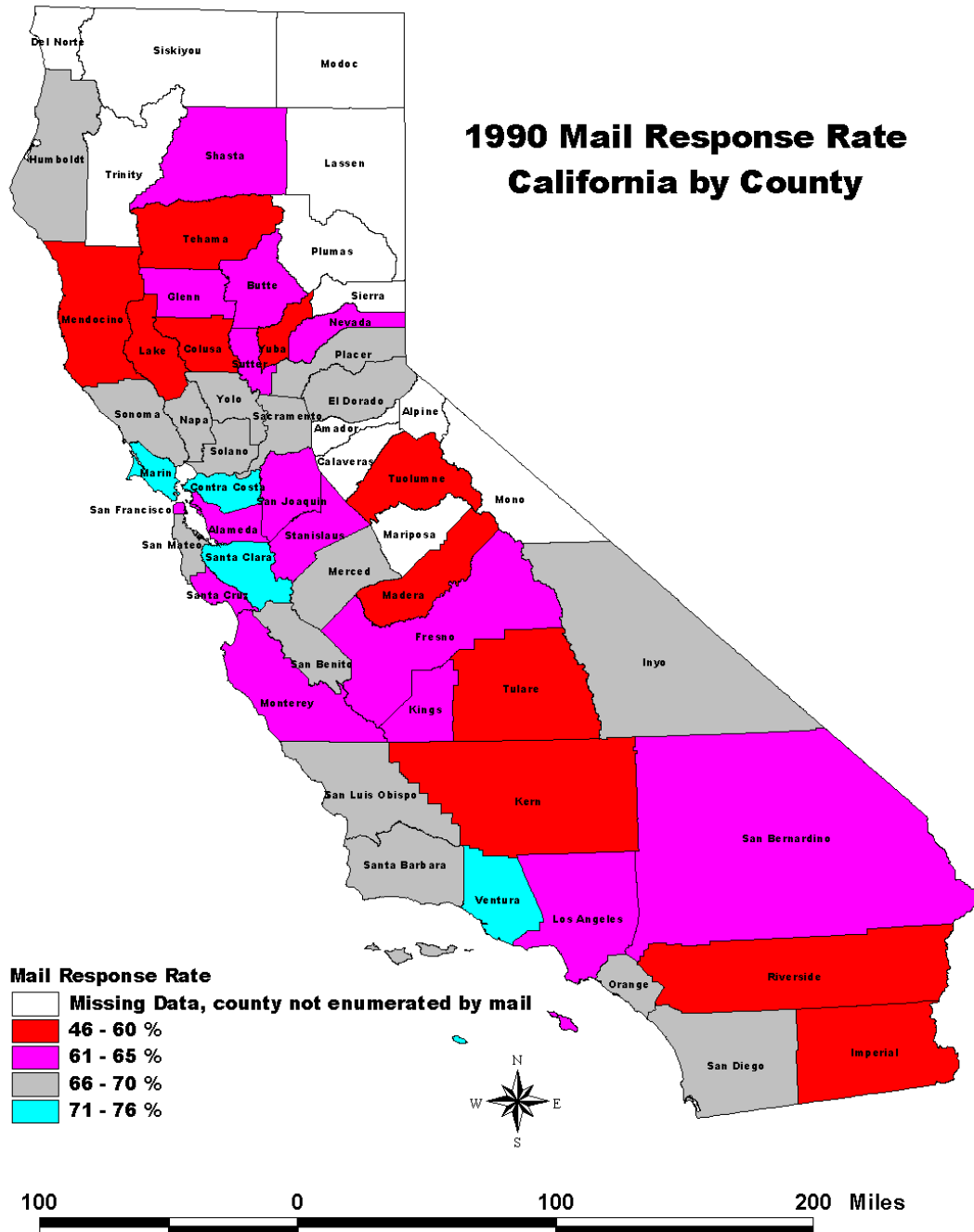
Data Source: 1990 US Census, <https://www.census.gov/dmd/www/mailresp.html>

The Mail Response Rate is calculated by dividing the number of mail returns by the total mail out universe (times 100 to convert to a rate).

The total mail out universe includes occupied housing units, vacant units and nonexistent units.

Not all jurisdictions are included in this table.

Maps – California Mail Response Rates by County

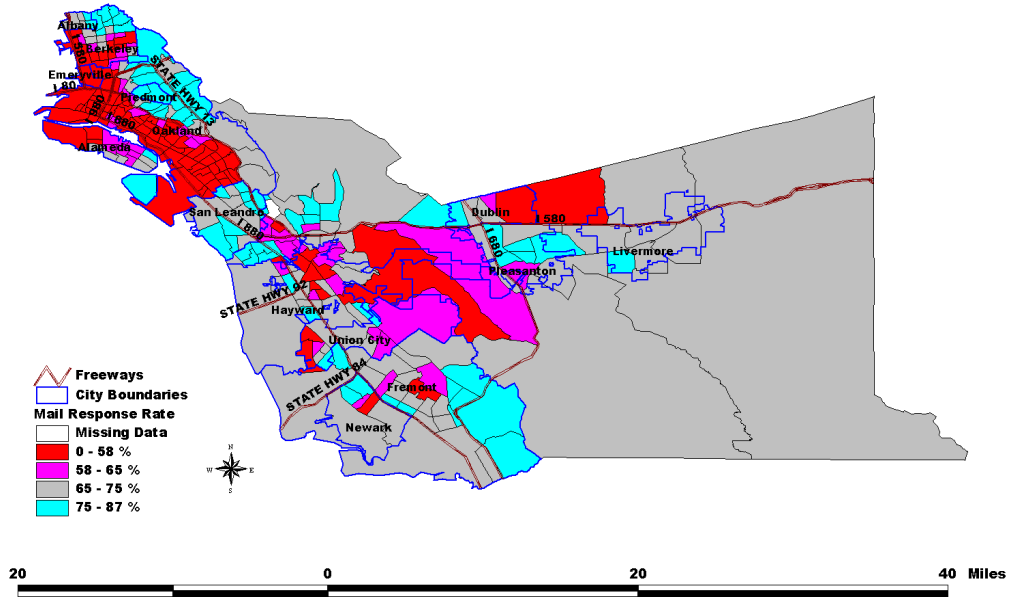


Source: 1990 US Census, map prepared by the California DEPARTMENT OF FINANCE, Demographic Research Unit, 2/3/00

Maps – County Mail Response Rates by Census Tract

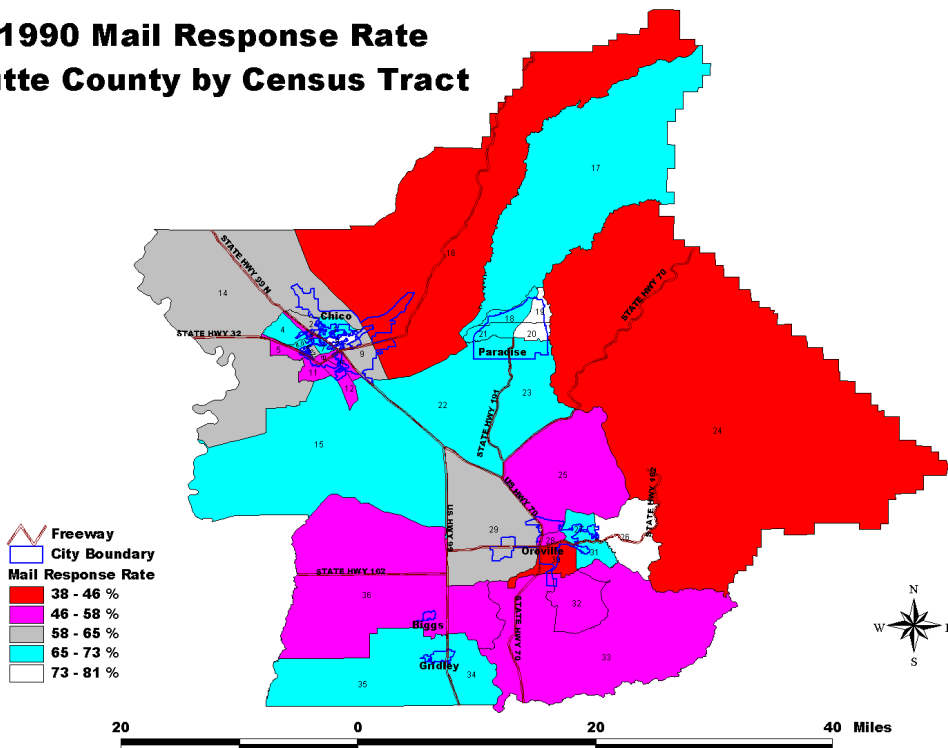
Note: County maps are not available for Alpine, Amador, Calaveras, Del Norte, Lassen, Mariposa, Modoc, Mono, Plumas, Sierra, Siskiyou, and Trinity Counties.

1990 Mail Response Rate Alameda County by Census Tract



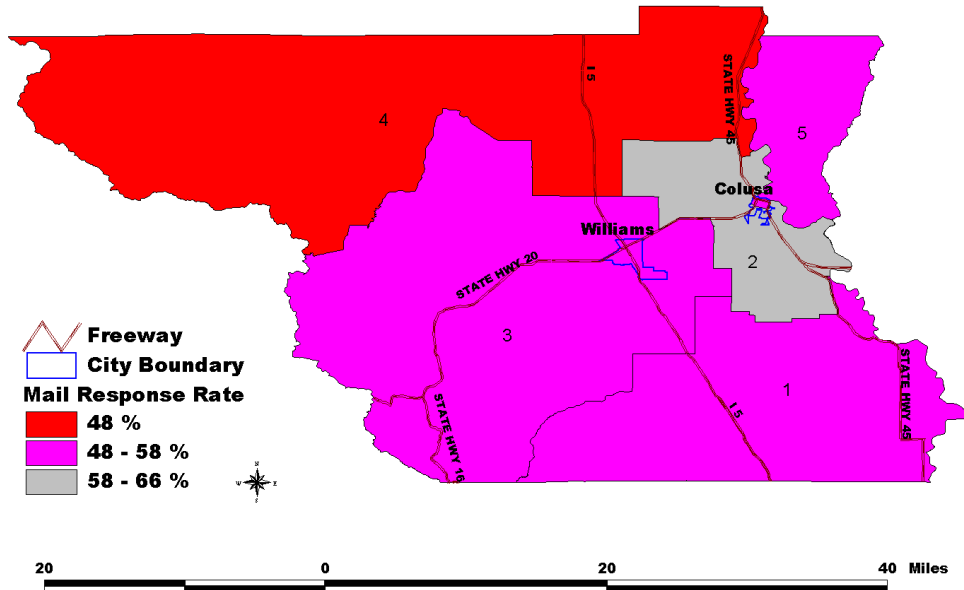
Source: 1990 US Census - Planning Database File, map prepared by the DEPARTMENT OF FINANCE, Demographic Research Unit, 12/1/99

1990 Mail Response Rate Butte County by Census Tract



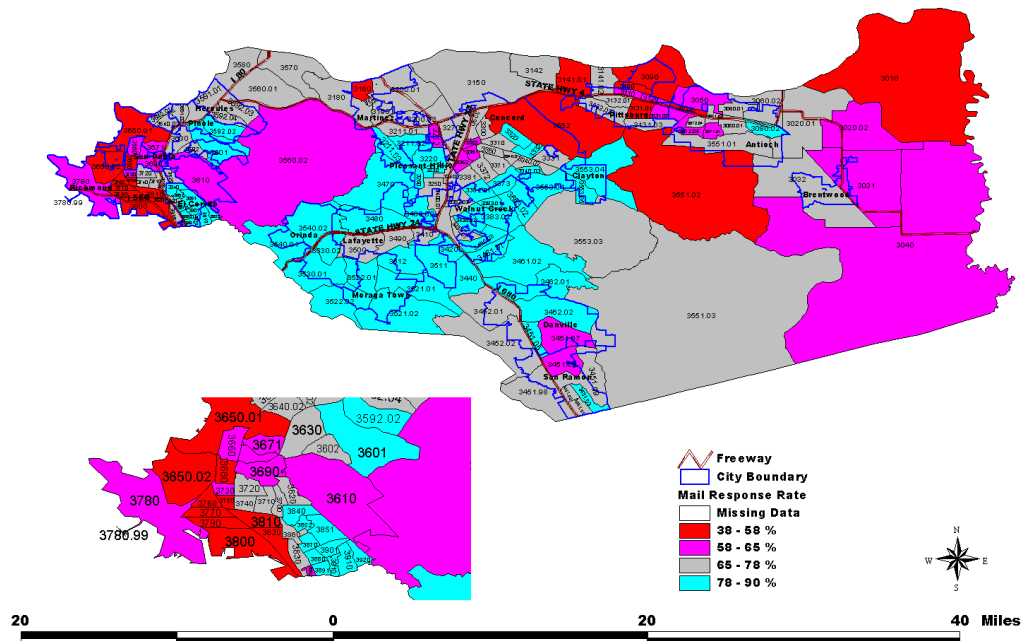
Source: 1990 US Census - Planning Database File, map prepared by the California DEPARTMENT OF FINANCE, Demographic Research Unit, 12/1/99

1990 Mail Response Rate Colusa County by Census Tract



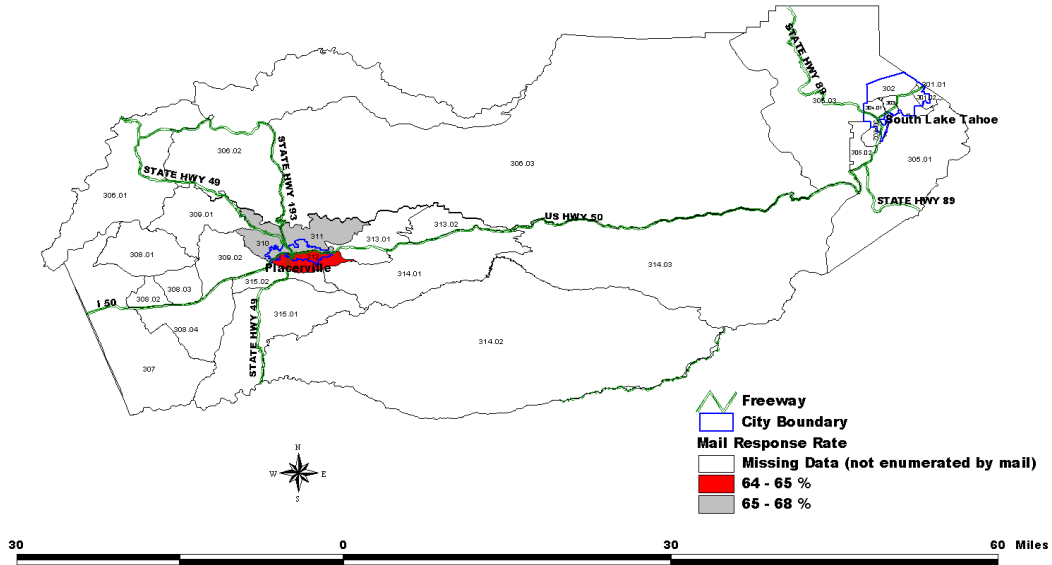
Source: 1990 US Census - Planning Database File, map prepared by the California DEPARTMENT OF FINANCE, Demographic Research Unit, 12/1/99

1990 Mail Response Rate Contra Costa County by Census Tract



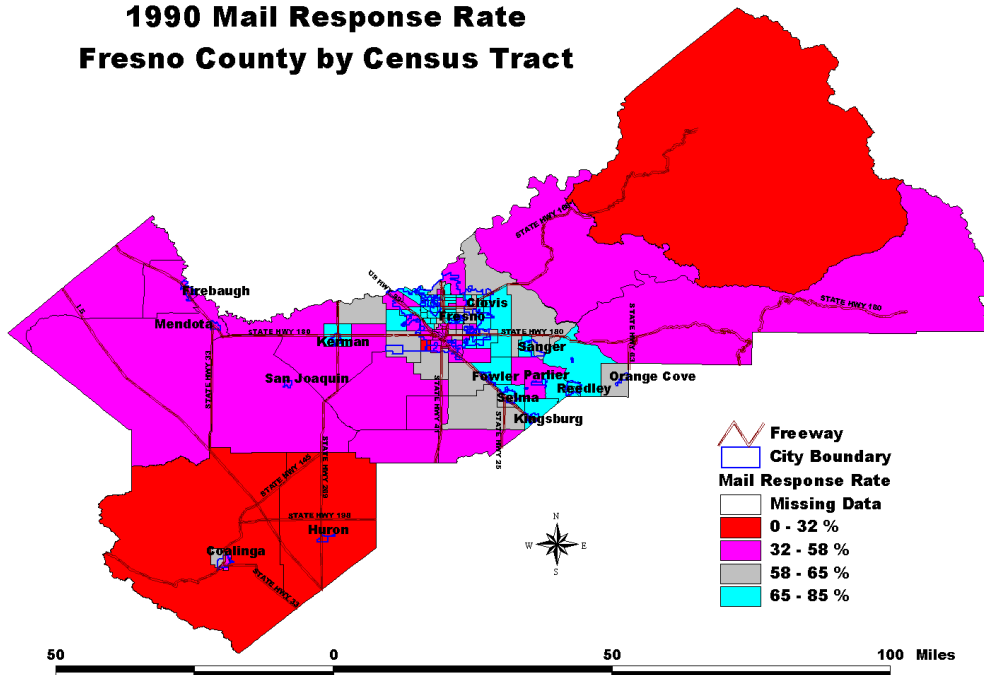
Source: 1990 US Census - Planning Database File, map prepared by the California DEPARTMENT OF FINANCE, Demographic Research Unit, 12/1/99

1990 Mail Response Rate El Dorado County by Census Tract



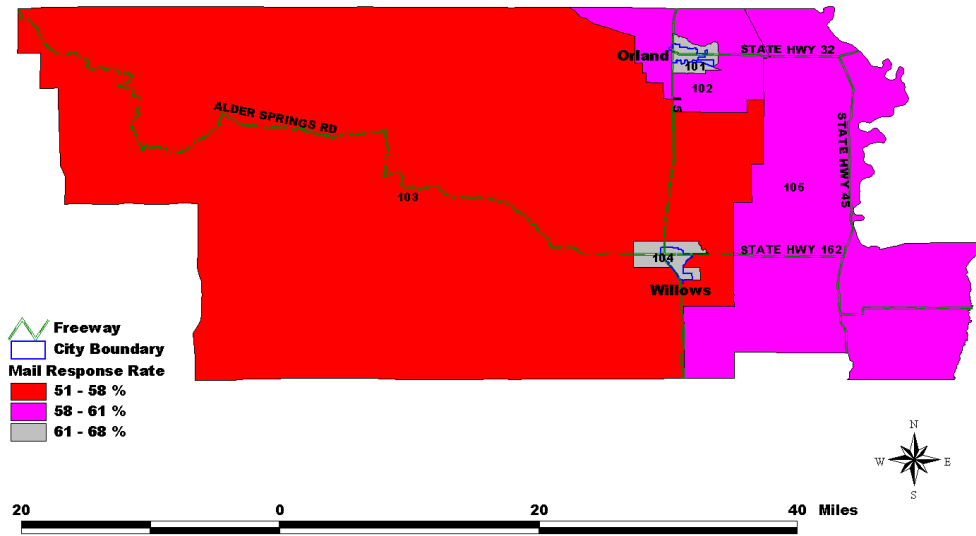
Source: 1990 US Census - Planning Database File, map prepared by the California DEPARTMENT OF FINANCE, Demographic Research Unit, 12/1/99

1990 Mail Response Rate Fresno County by Census Tract



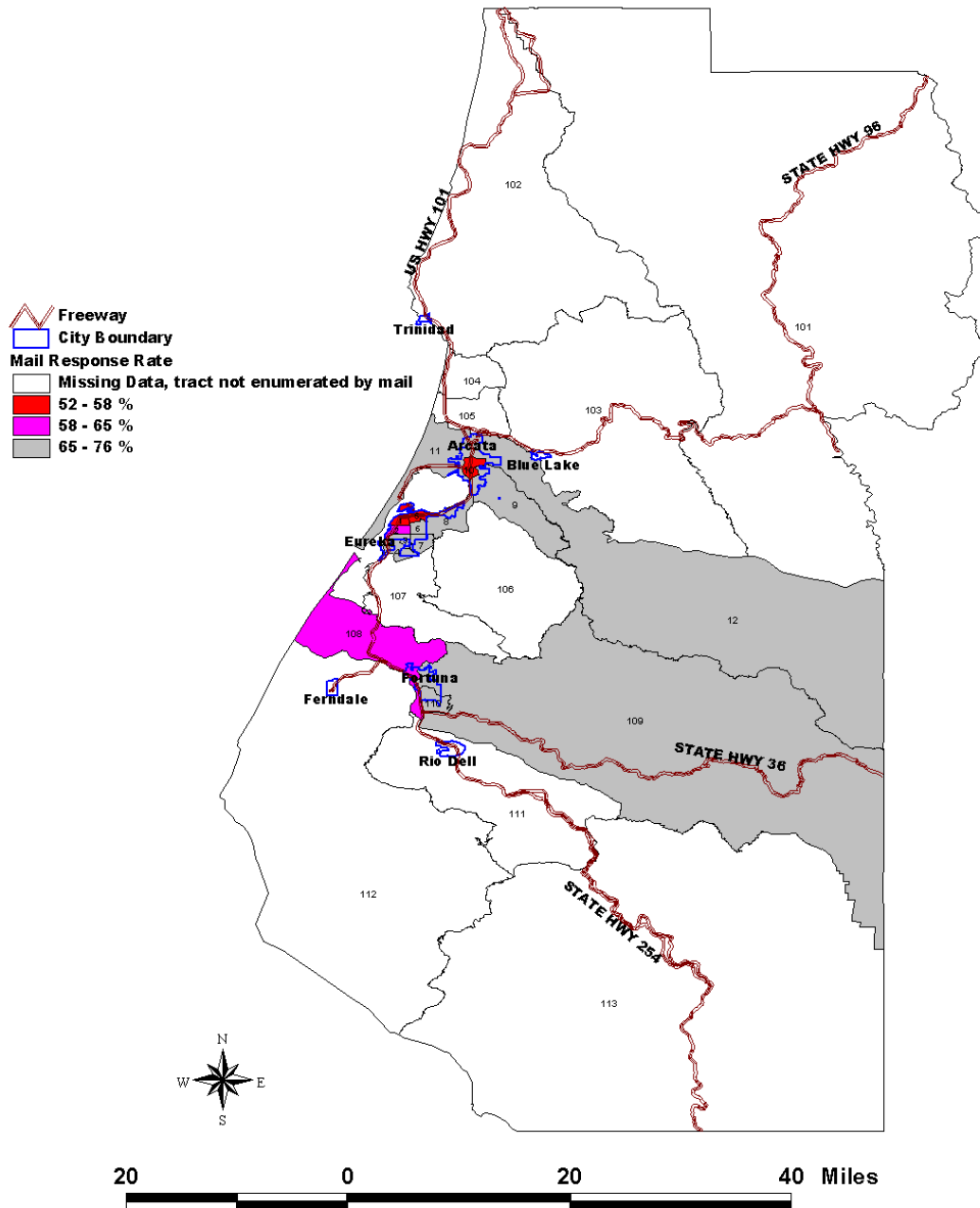
Source: 1990 US Census - Planning Database File, map prepared by the California DEPARTMENT OF FINANCE, Demographic Research Unit, 12/1/99

1990 Mail Response Rate Glenn County by Census Tract



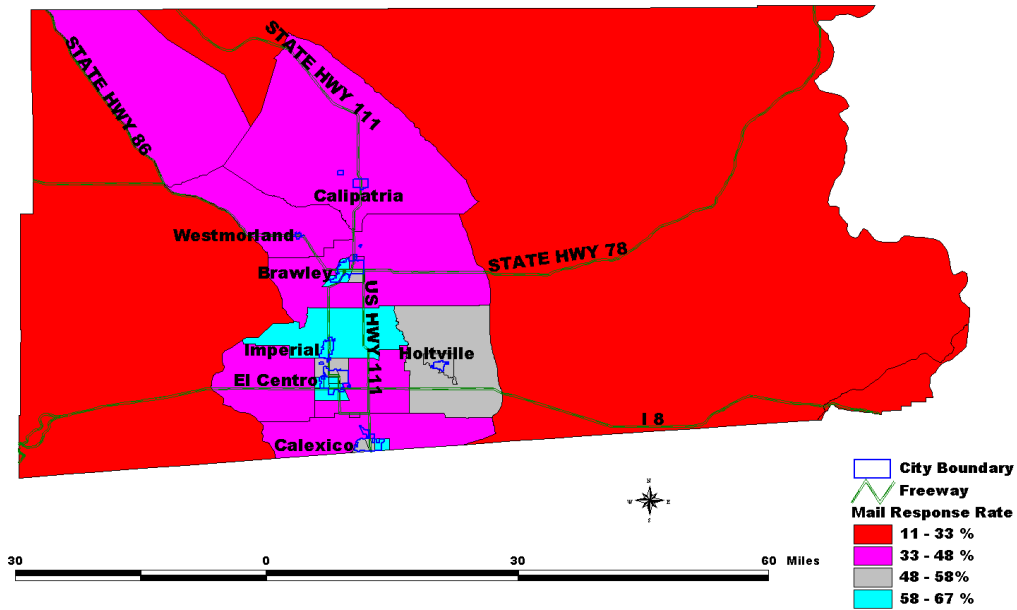
Source: 1990 US Census - Planning Database File, map prepared by the California DEPARTMENT OF FINANCE, Demographic Research Unit, 12/1/99

1990 Mail Response Rate Humboldt County by Census Tract



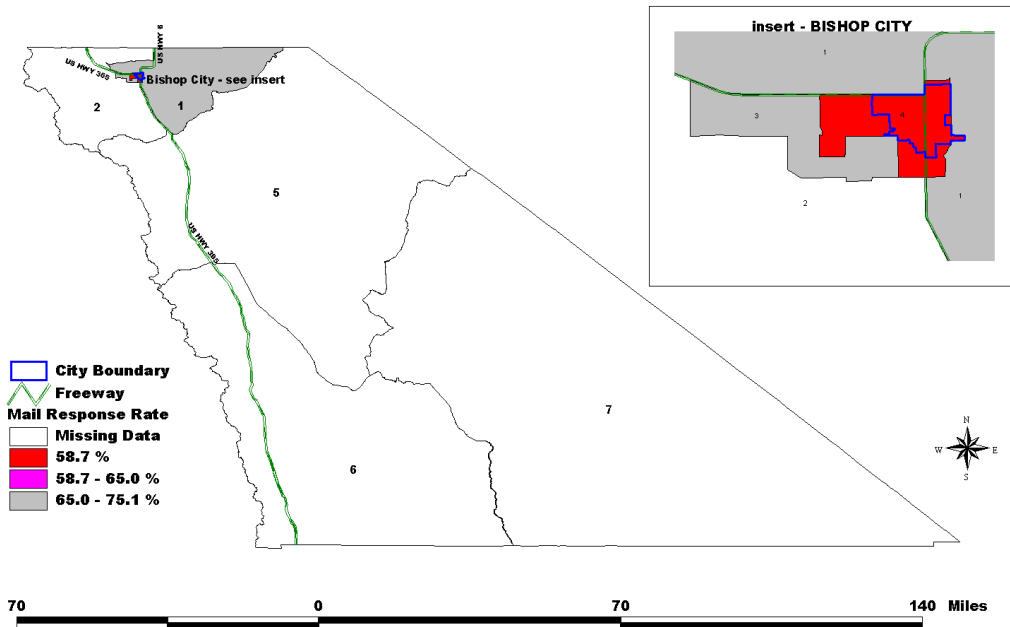
Source: 1990 US Census - Planning Database File, map prepared by the California DEPARTMENT OF FINANCE, Demographic Research Unit, 12/1/99

1990 Mail Response Rate Imperial County by Census Tract



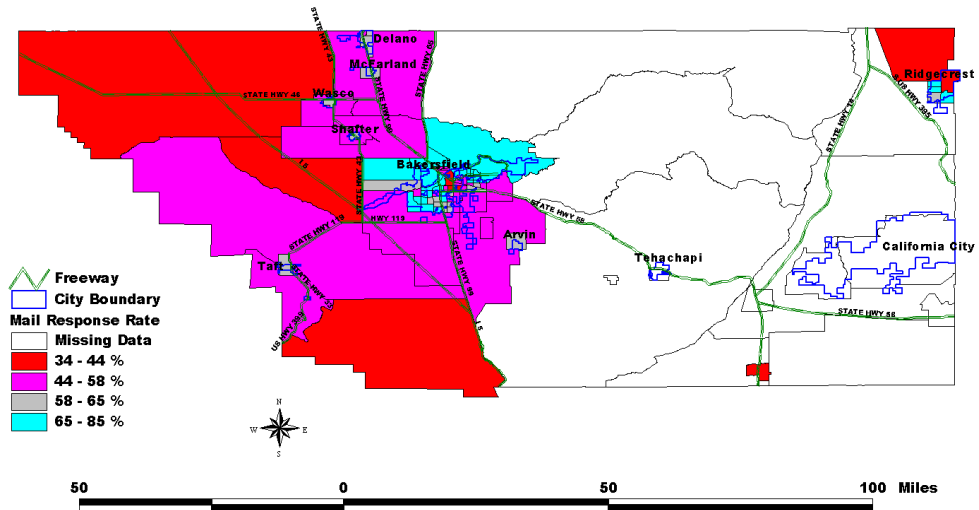
Source: 1990 US Census - Planning Database File, map prepared by the California DEPARTMENT OF FINANCE, Demographic Research Unit, 12/1/99

1990 Mail Response Rate Inyo County by Census Tract



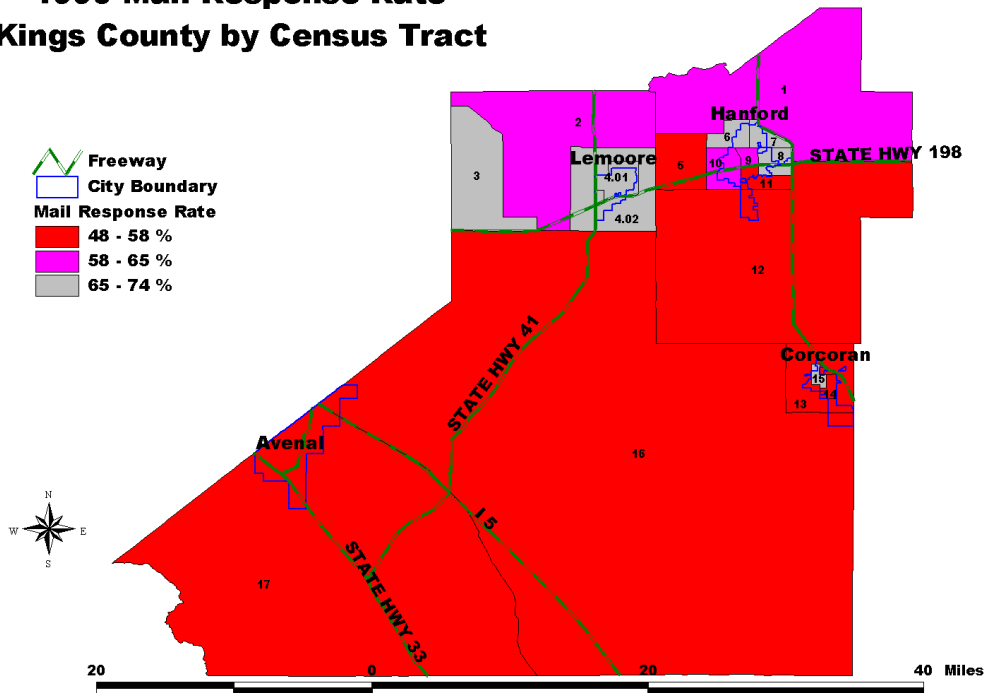
Source: 1990 US Census - Planning Database File, map prepared by the California DEPARTMENT OF FINANCE, Demographic Research Unit, 12/1/99

1990 Mail Response Rate Kern County by Census Tract



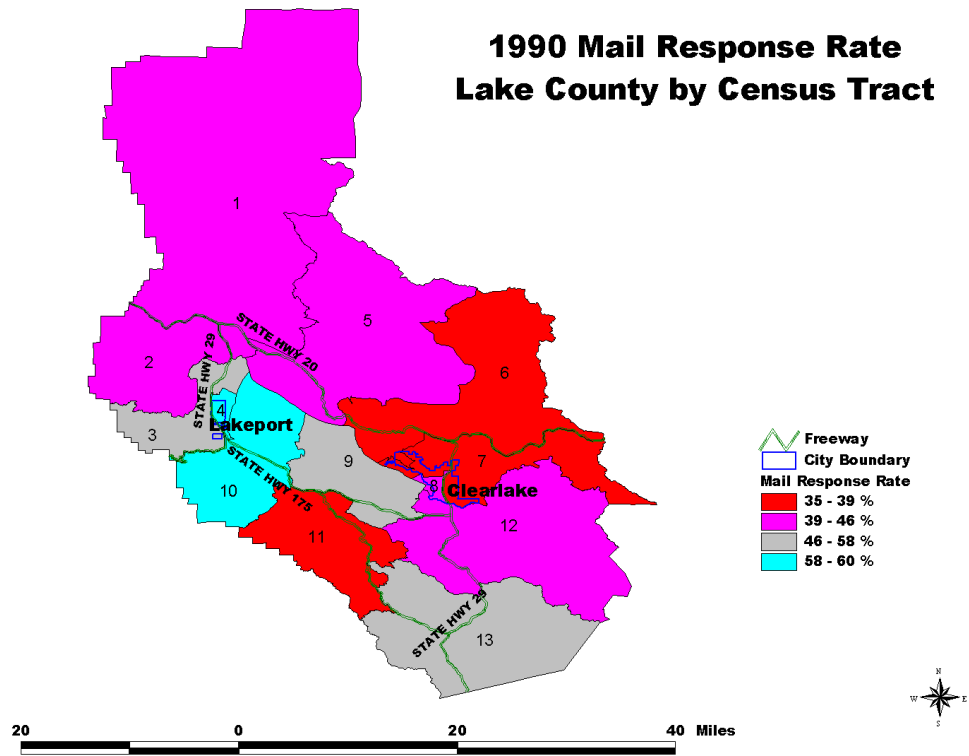
Source: 1990 US Census - Planning Database File, map prepared by the California DEPARTMENT OF FINANCE, Demographic Research Unit, 12/1/99

1990 Mail Response Rate Kings County by Census Tract



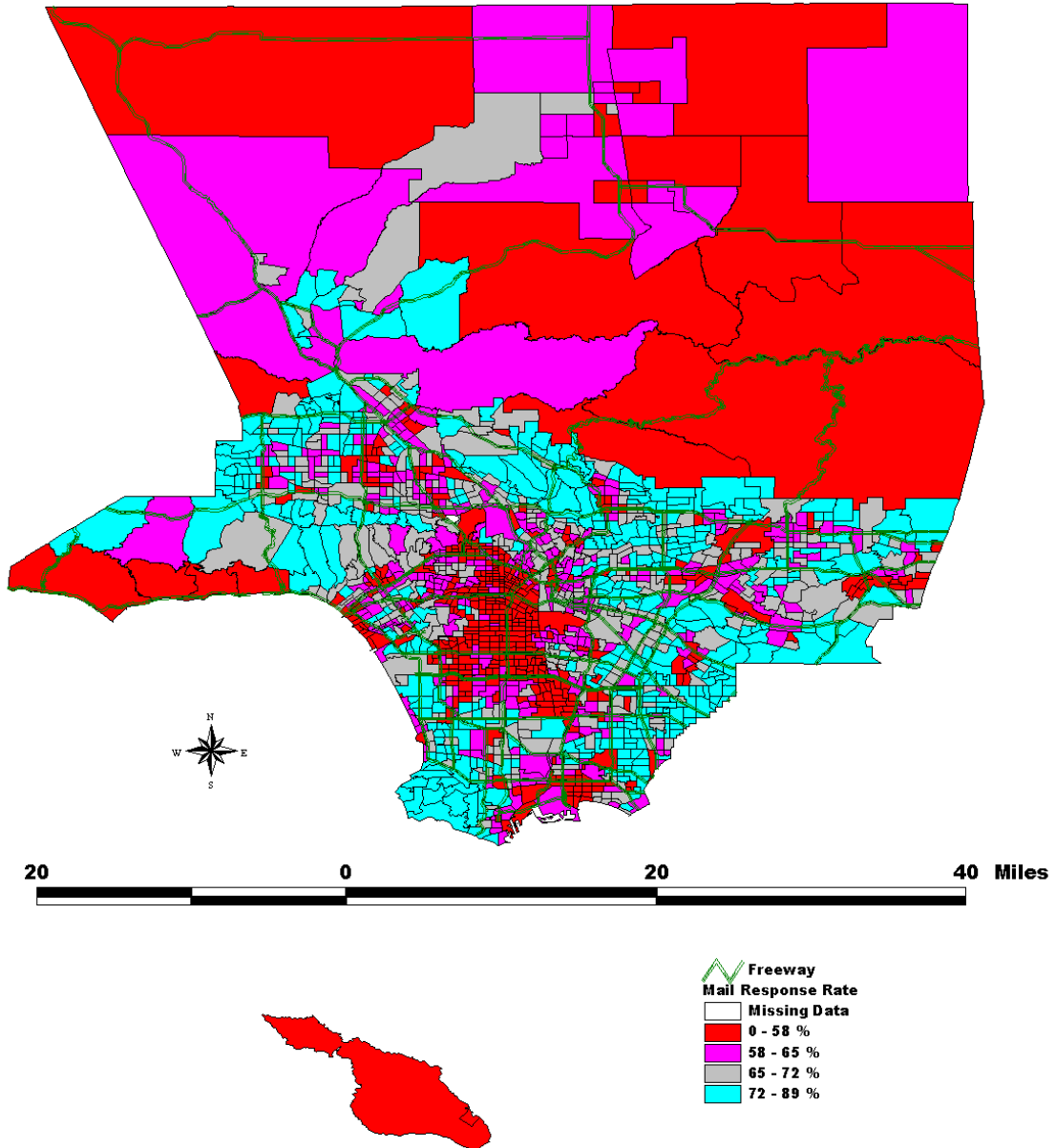
Source: 1990 US Census - Planning Database File, map prepared by the CA DEPARTMENT OF FINANCE, Demographic Research Unit, 11/12/99

1990 Mail Response Rate Lake County by Census Tract



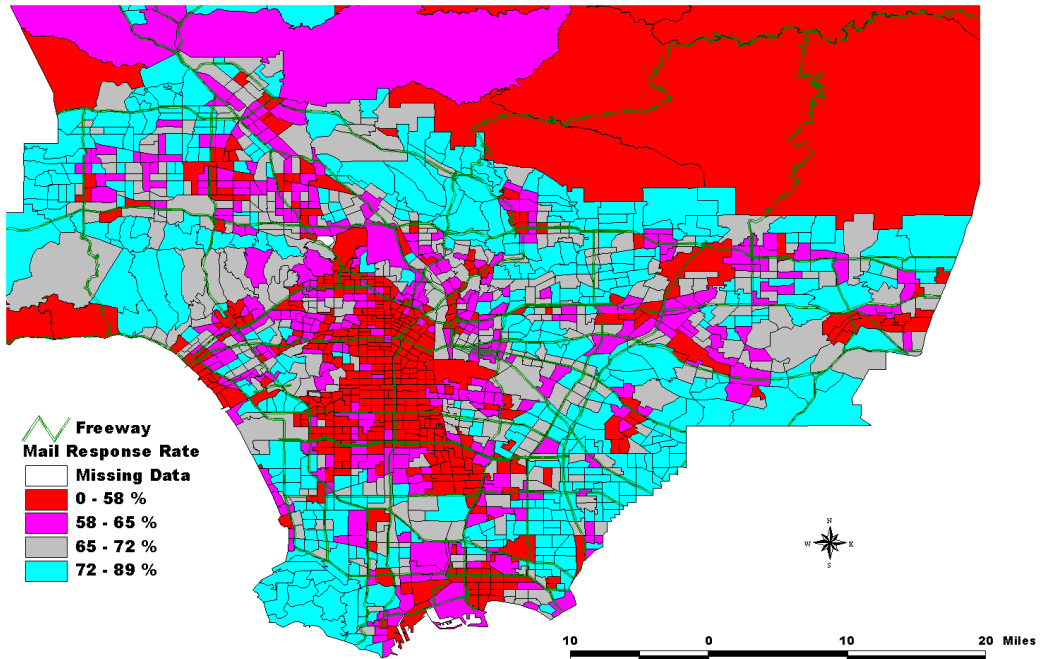
Source: 1990 US Census - Planning Database File, map prepared by the California DEPARTMENT OF FINANCE, Demographic Research Unit, 12/1/99

1990 Mail Response Rate Los Angeles County by Census Tract



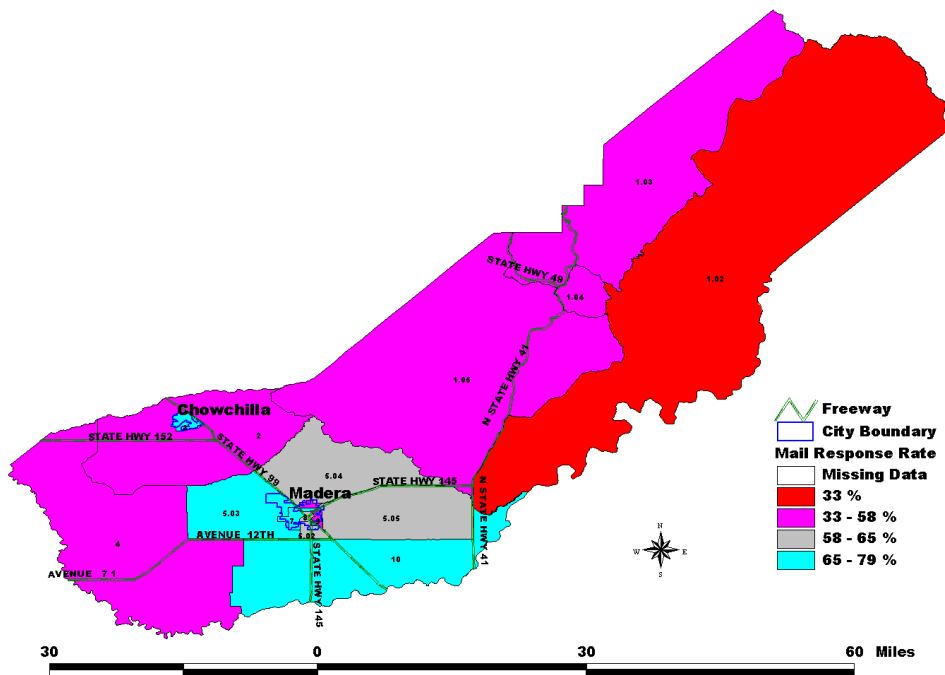
Source: 1990 US Census - Planning Database File, map prepared by the California DEPARTMENT OF FINANCE, Demographic Research Unit, 12/1/99

1990 Mail Response Rate - Southern Los Angeles County by Census Tract



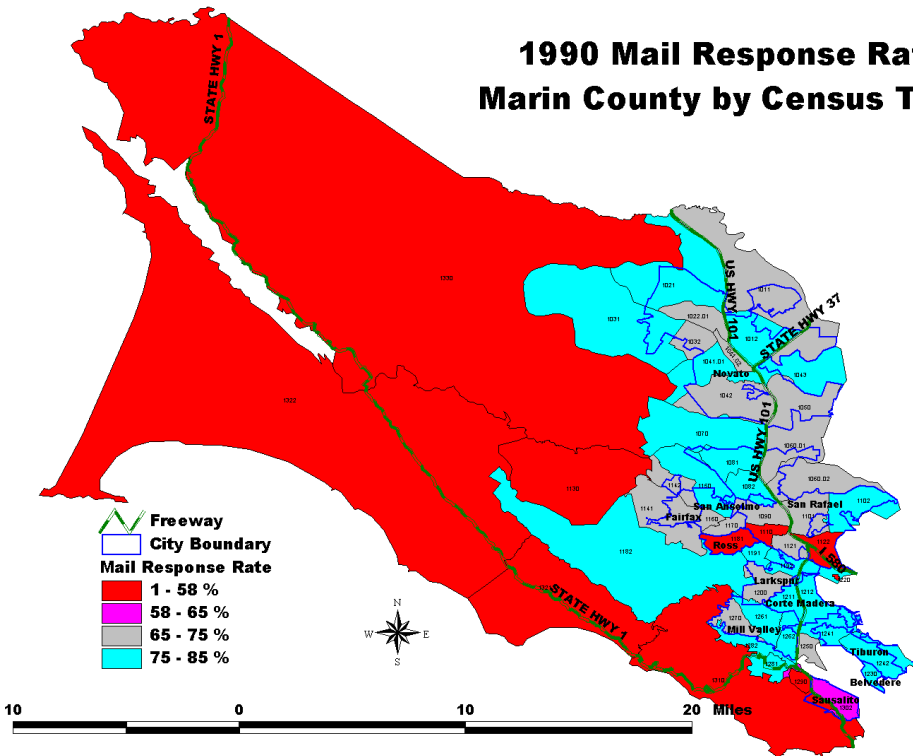
Source: 1990 US Census - Planning Database File, map prepared by the California DEPARTMENT OF FINANCE, Demographic Research Unit, 12/1/99

1990 Mail Response Rate Madera County by Census Tract



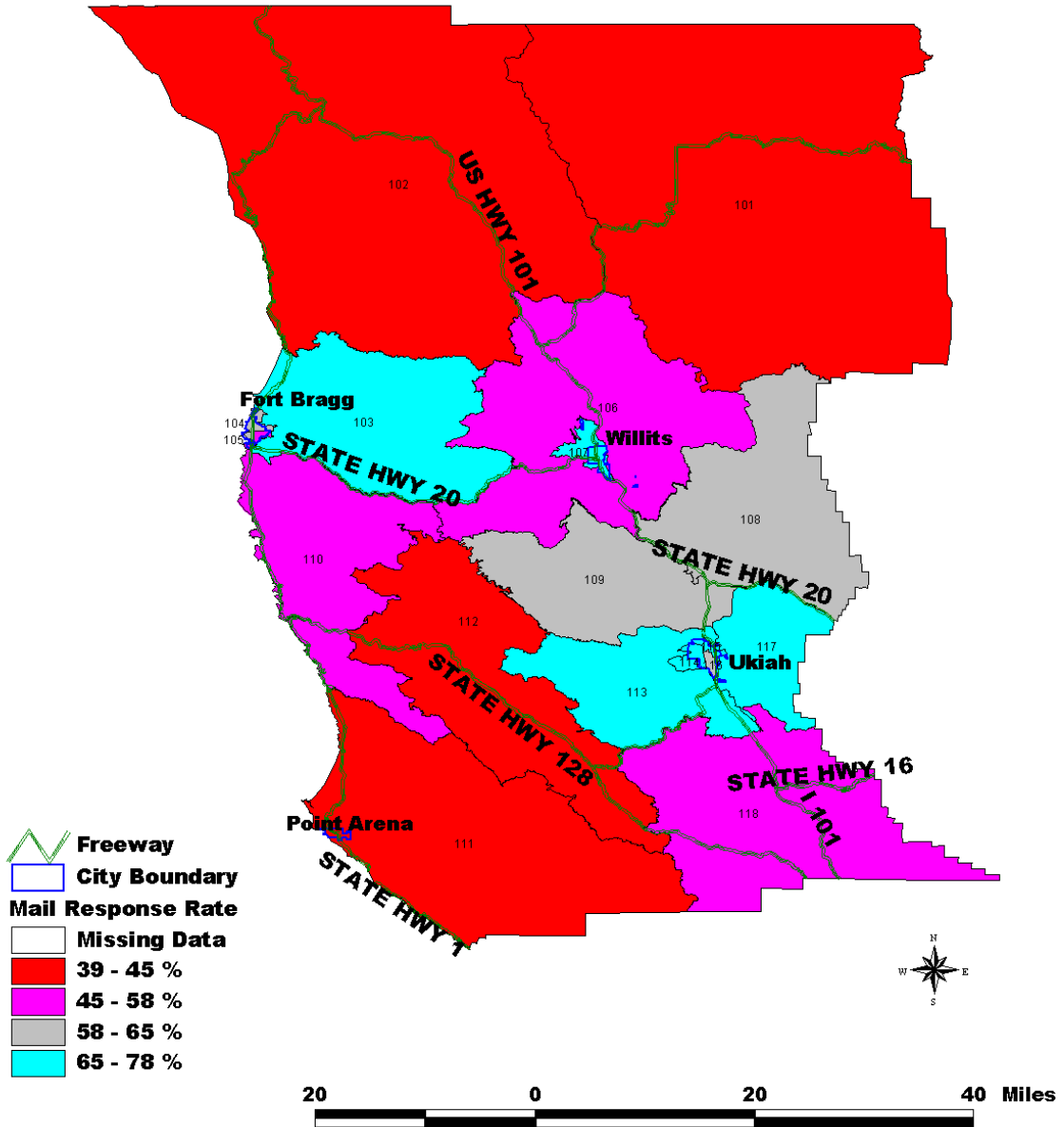
Source: 1990 US Census - Planning Database File, map prepared by the California DEPARTMENT OF FINANCE, Demographic Research Unit, 12/1/99

1990 Mail Response Rate Marin County by Census Tract



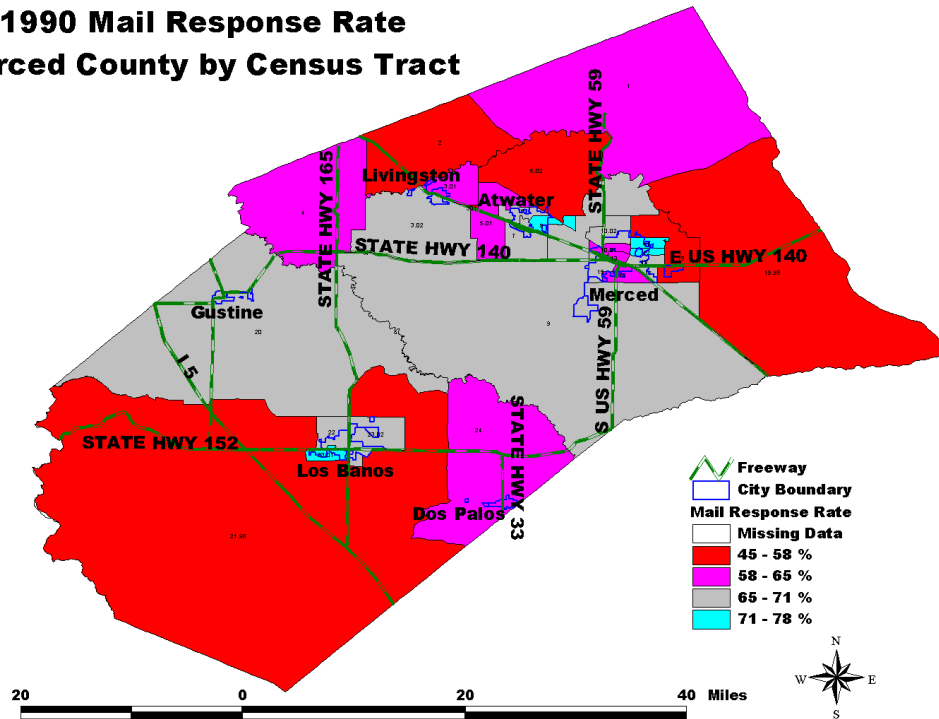
Source: 1990 US Census - Planning Database File, map prepared by the California DEPARTMENT OF FINANCE, Demographic Research Unit, 12/1/99

1990 Mail Response Rate Mendocino County by Census Tract



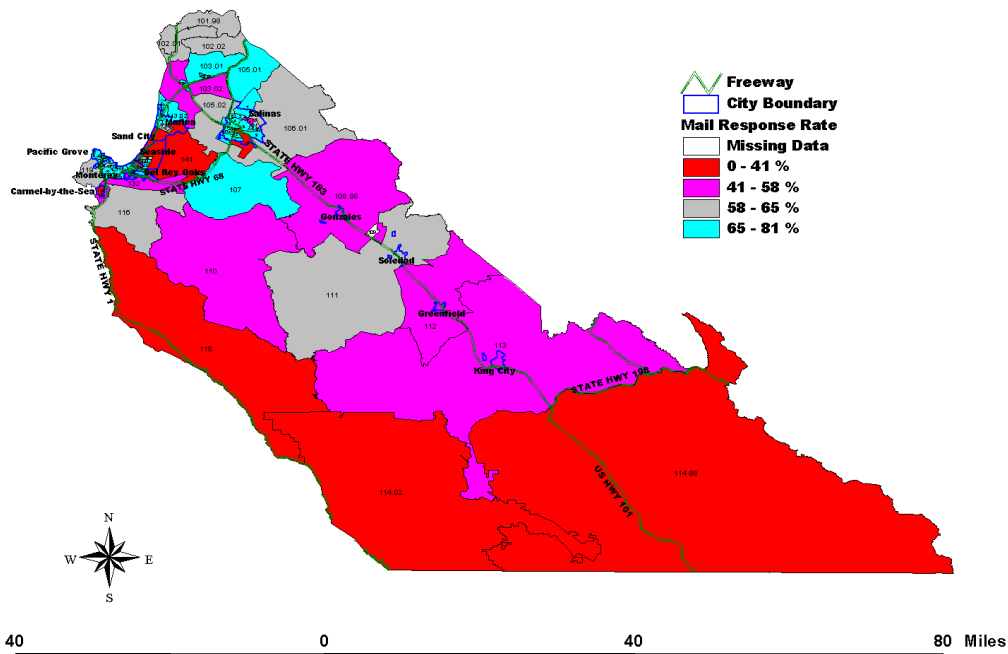
Source: 1990 US Census - Planning Database File, map prepared by the California DEPARTMENT OF FINANCE, Demographic Research Unit, 12/1/99

1990 Mail Response Rate Merced County by Census Tract



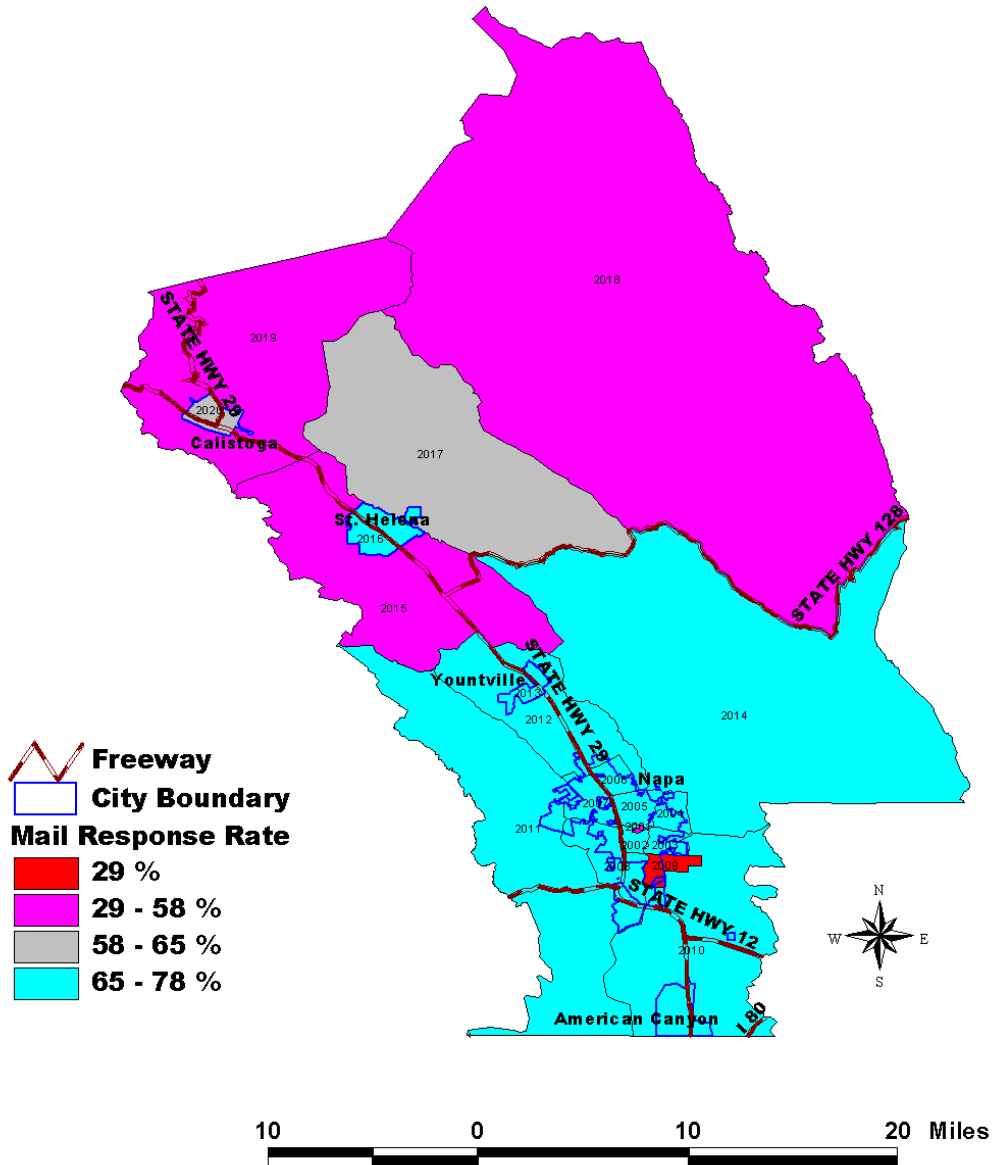
Source: 1990 US Census - Planning Database File, map prepared by the CA DEPARTMENT OF FINANCE, Demographic Research Unit, 11/8/99

1990 Mail Response Rate Monterey County by Census Tract



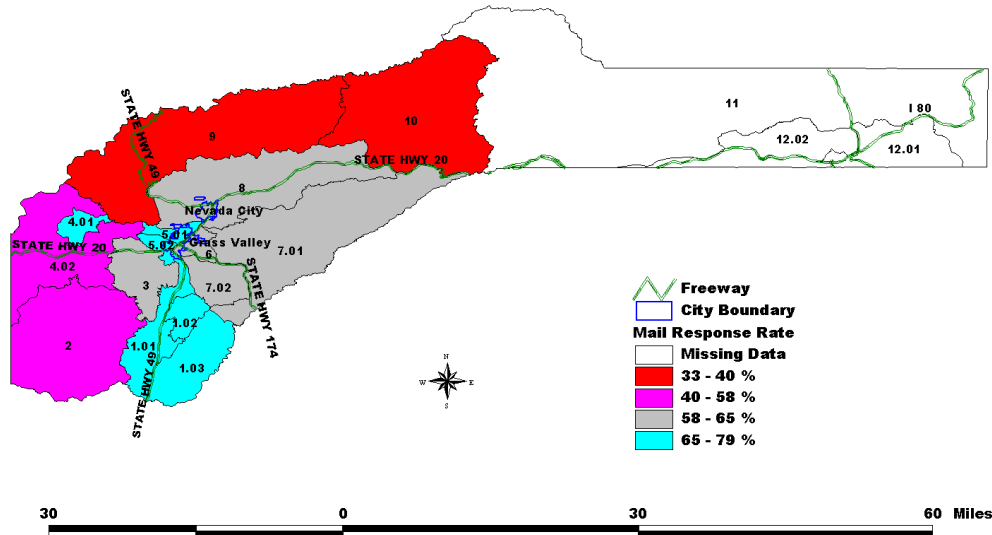
Source: 1990 US Census - Planning Database File, map prepared by the California DEPARTMENT OF FINANCE, Demographic Research Unit, 12/1/99

1990 Mail Response Rate Napa County by Census Tract



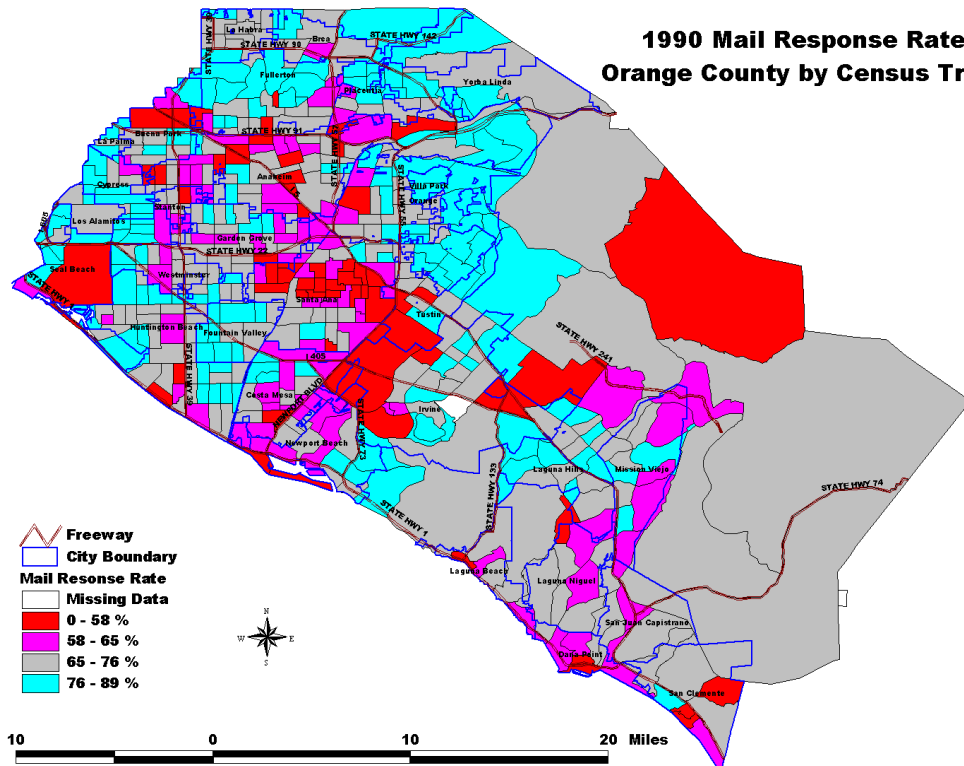
Source: 1990 US Census - Planning Database File, map prepared by the California DEPARTMENT OF FINANCE, Demographic Research Unit, 12/1/99

1990 Mail Response Rate Nevada County by Census Tract



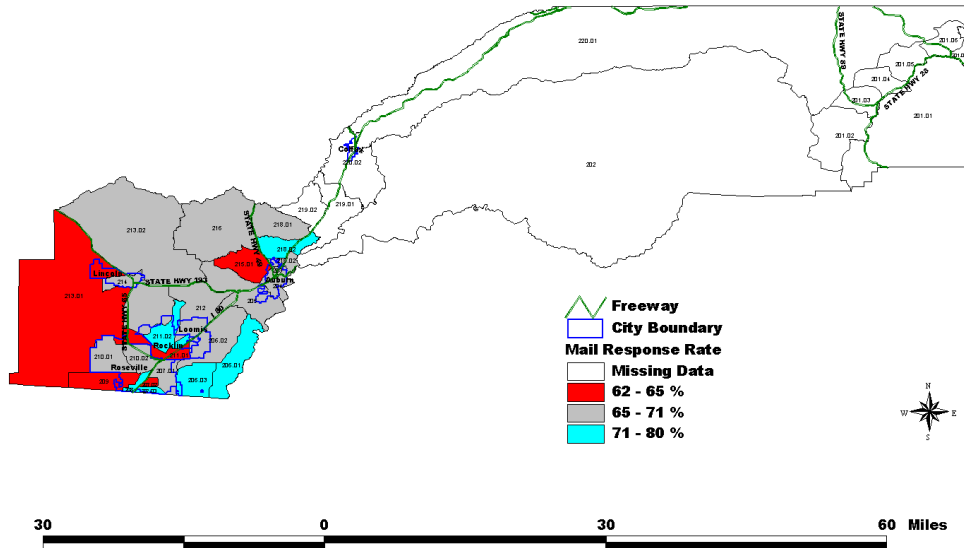
Source: 1990 US Census - Planning Database File, map prepared by California DEPARTMENT OF FINANCE, Demographic Research Unit, 12/1/99

1990 Mail Response Rate Orange County by Census Tract



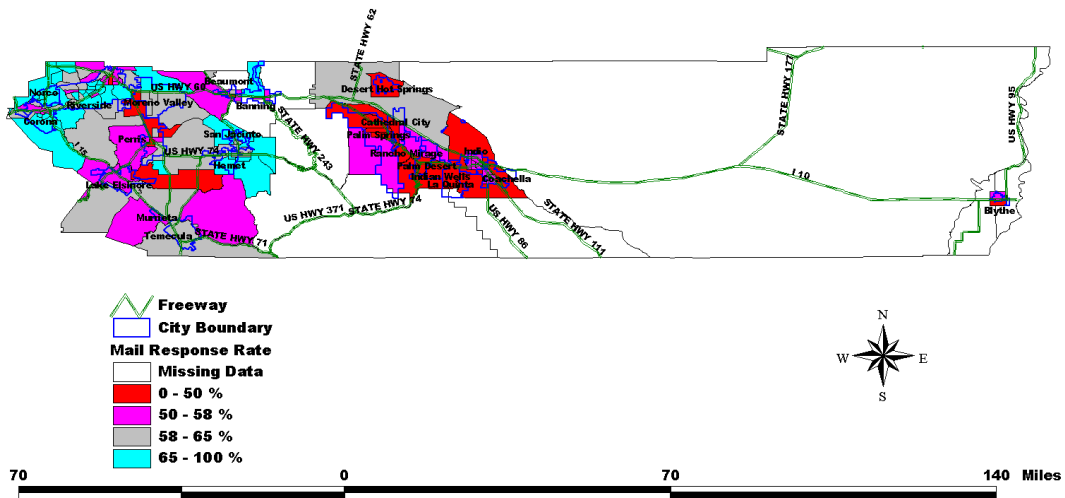
Source: 1990 US Census - Planning Database File, map prepared by the California DEPARTMENT OF FINANCE, Demographic Research Unit, 12/1/99

1990 Mail Response Rate Placer County by Census Tract



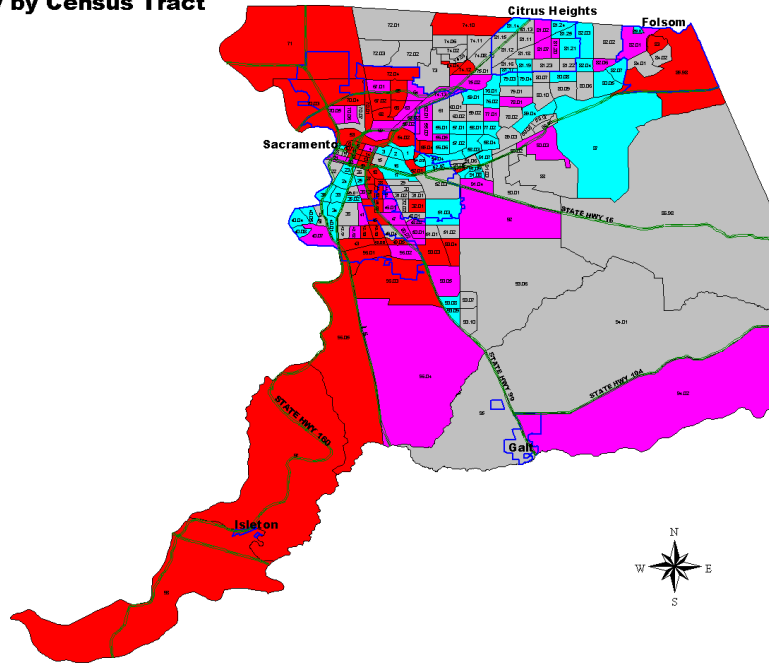
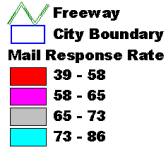
Source: 1990 US Census - Planning Database File, map prepared by the California DEPARTMENT OF FINANCE, Demographic Research Unit, 12/1/99

1990 Mail Response Rate Riverside County by Census Tract



Source: 1990 US Census - Planning Database File, map prepared by the California DEPARTMENT OF FINANCE, Demographic Research Unit, 12/1/99

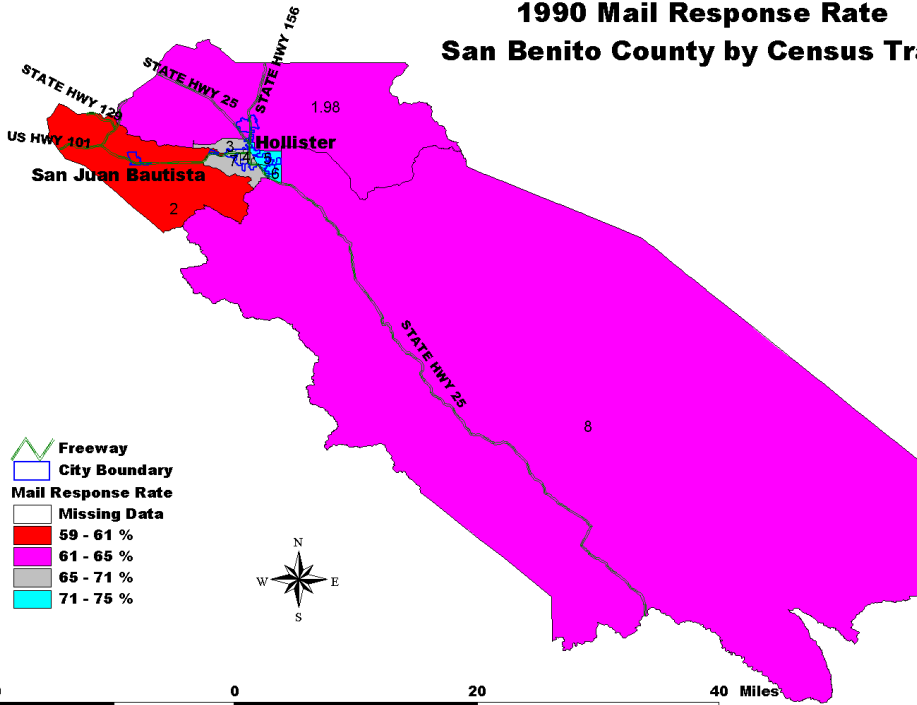
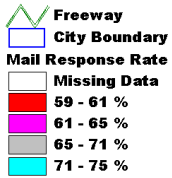
**1990 Mail Response Rate
Sacramento County by Census Tract**



Source: 1990 US Census - Planning Database File, map prepared by the California DEPARTMENT OF FINANCE, Demographic Research Unit, 12/1/99

20 0 20 40 Miles

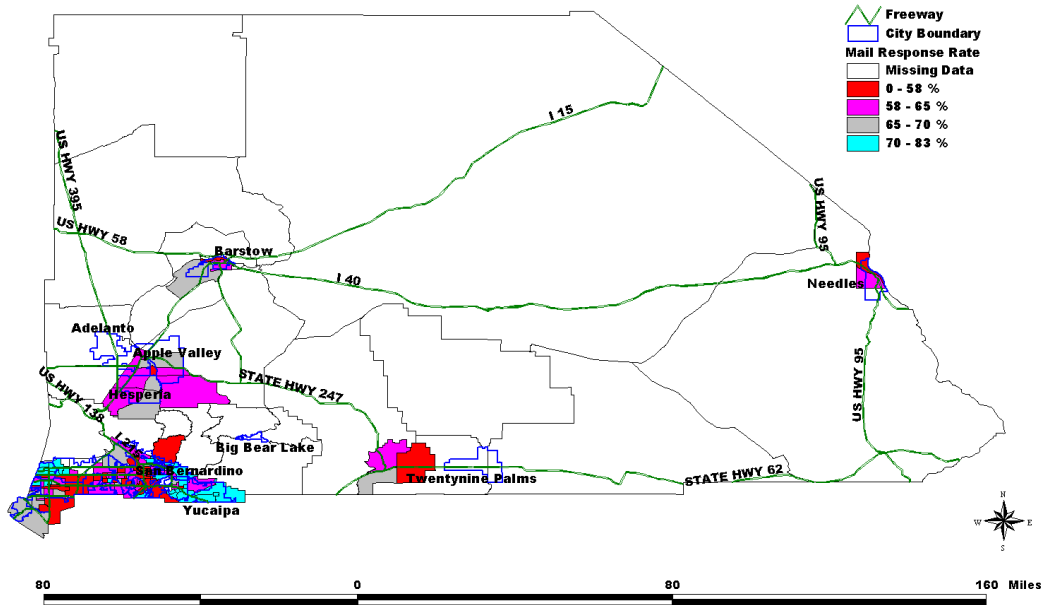
**1990 Mail Response Rate
San Benito County by Census Tract**



Source: 1990 US Census - Planning Database File, map prepared by the California DEPARTMENT OF FINANCE, Demographic Research Unit, 12/1/99

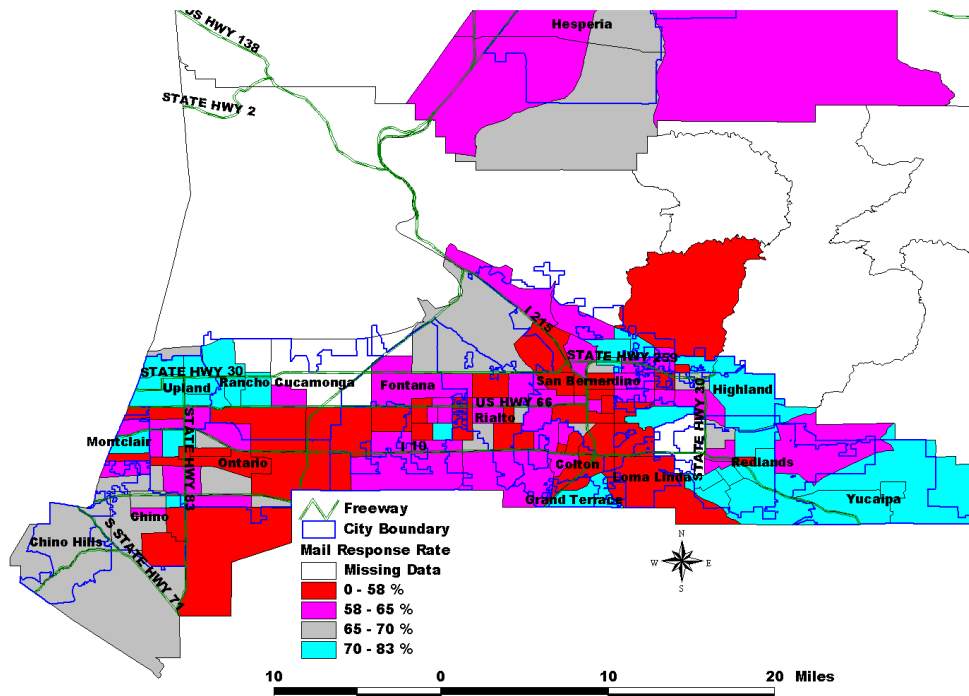
20 0 20 40 Miles

1990 Mail Response Rate San Bernardino County by Census Tract



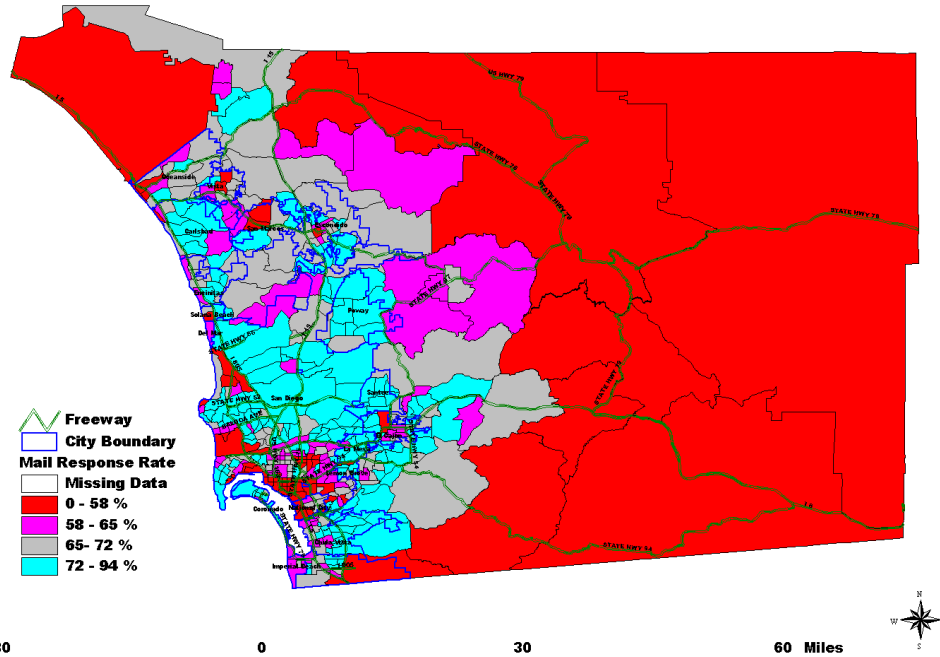
Source: 1990 US Census - Planning Database File, map prepared by the California DEPARTMENT OF FINANCE, Demographic Research Unit, 12/1/99

1990 Mail Response Rate Southwest San Bernardino County by Census Tract



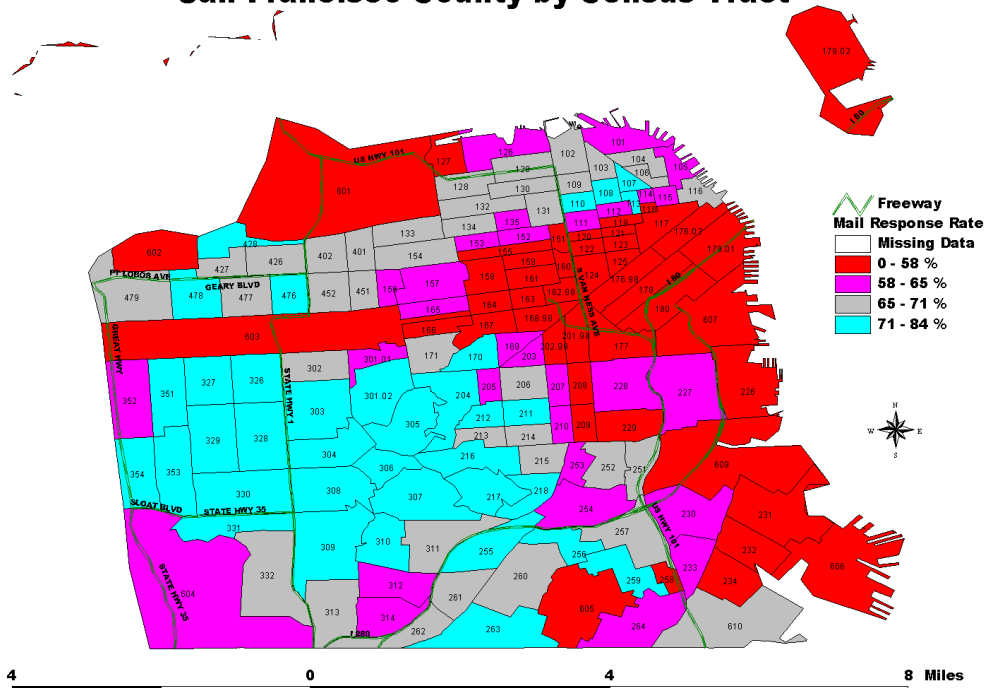
Source: 1990 US Census - Planning Database File, map prepared by the California DEPARTMENT OF FINANCE, Demographic Research Unit, 12/1/99

1990 Mail Response Rate San Diego County by Census Tract



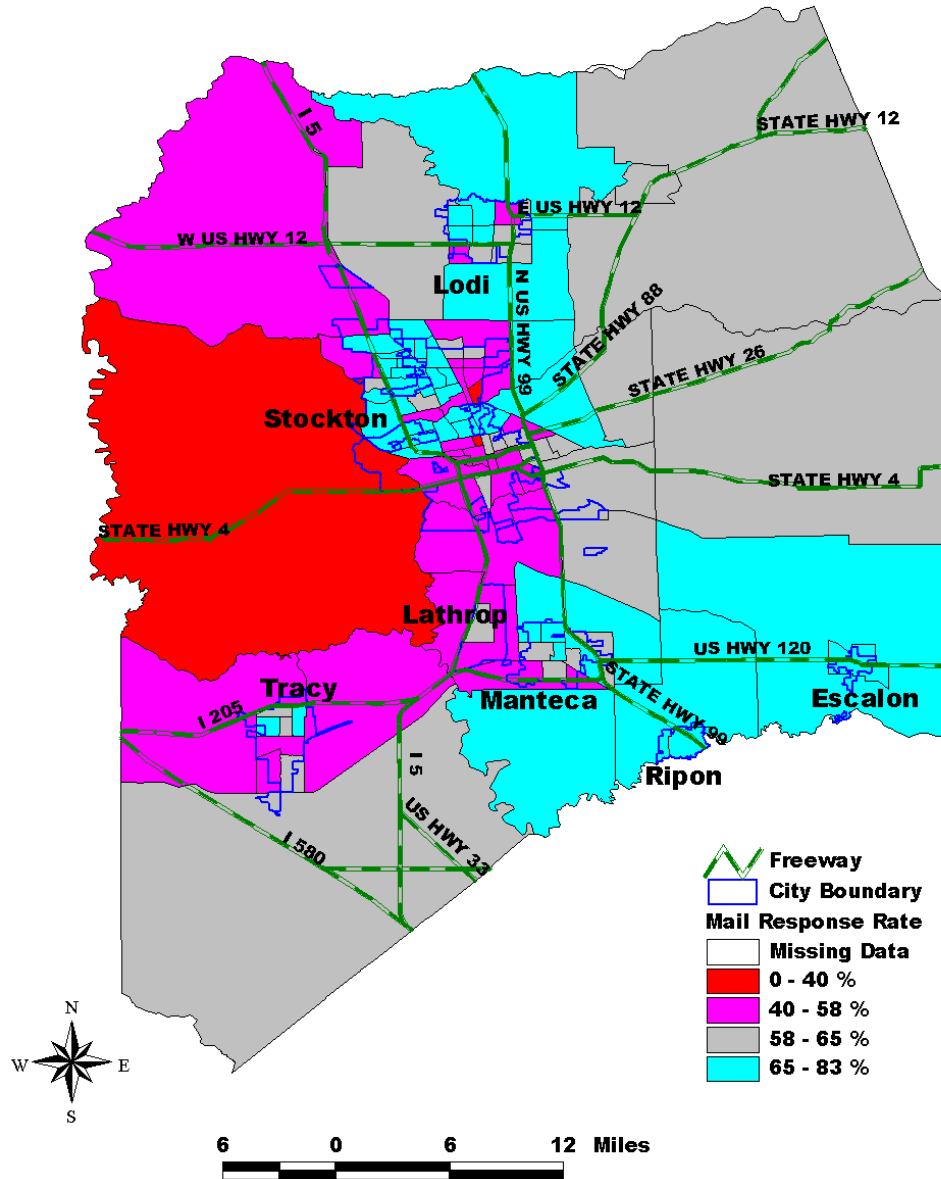
Source: 1990 US Census - Planning Database File, map prepared by the California DEPARTMENT OF FINANCE, Demographic Research Unit, 12/1/99

1990 Mail Response Rate San Francisco County by Census Tract



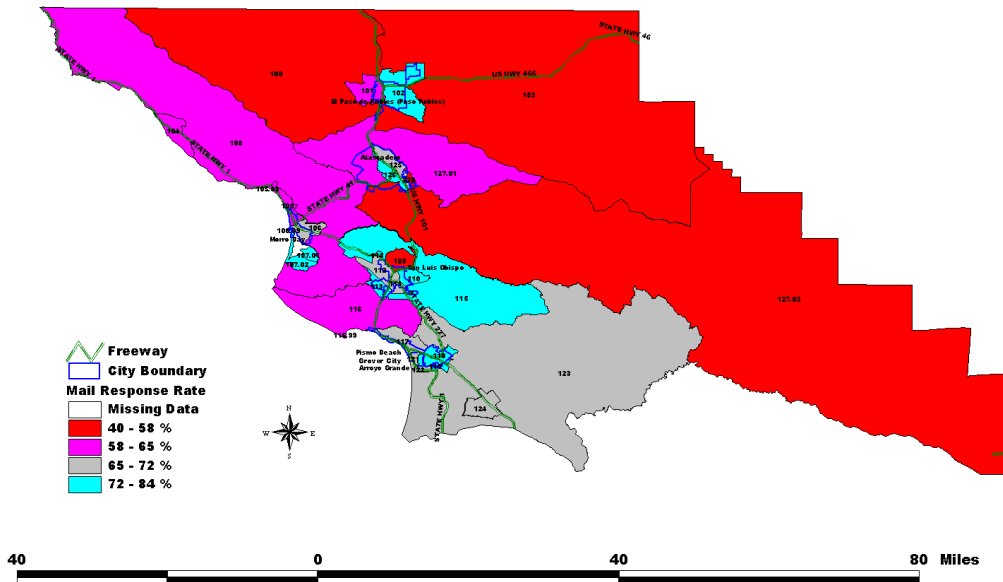
Source: 1990 US Census - Planning Database File, map prepared by the California DEPARTMENT OF FINANCE, Demographic Research Unit, 12/1/99

1990 Mail Response Rate San Joaquin County by Census Tract



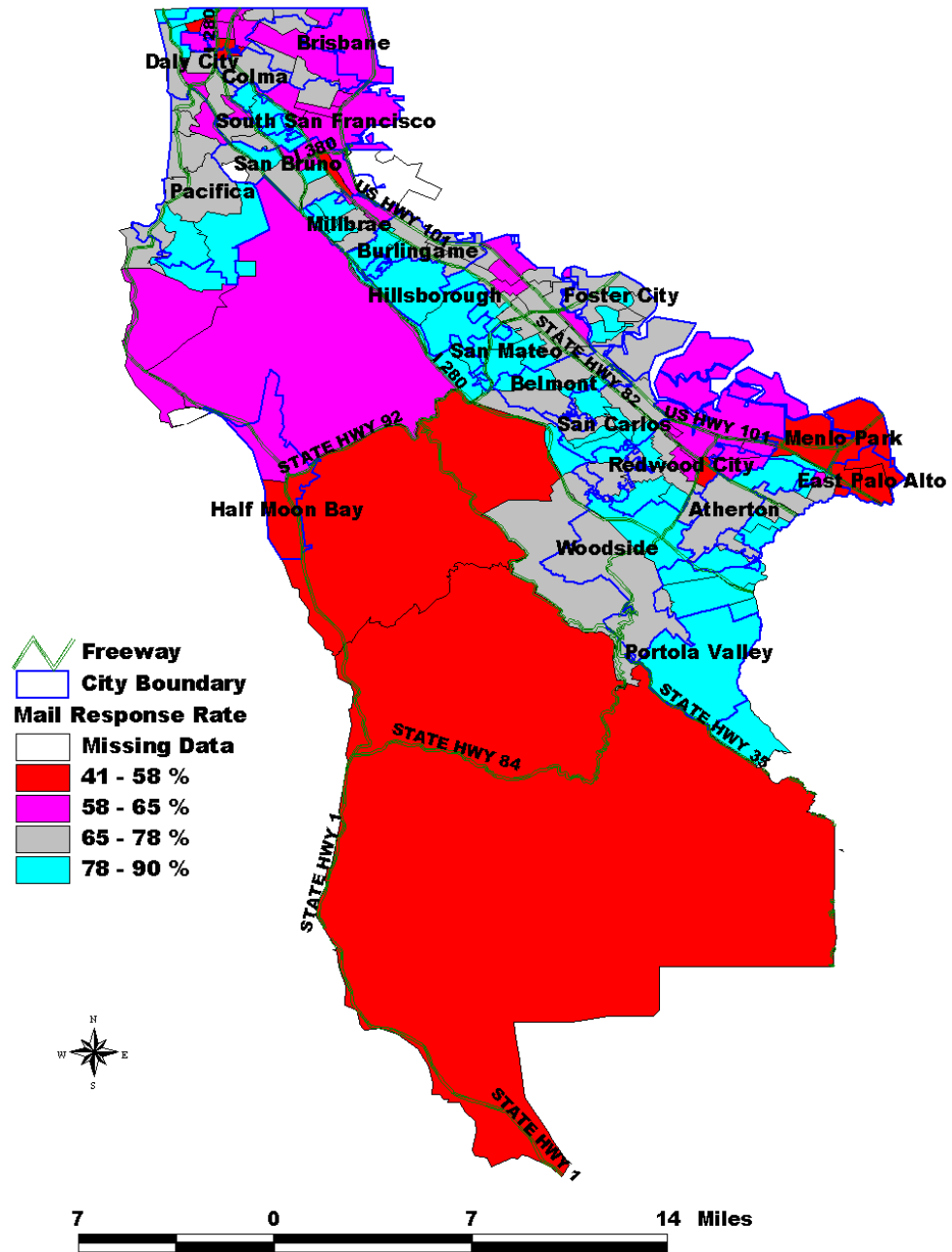
Source: 1990 US Census - Planning Database File, map prepared by the California DEPARTMENT OF FINANCE, Demographic Research Unit, 12/4/99

1990 Mail Response Rate San Luis Obispo County by Census Tract



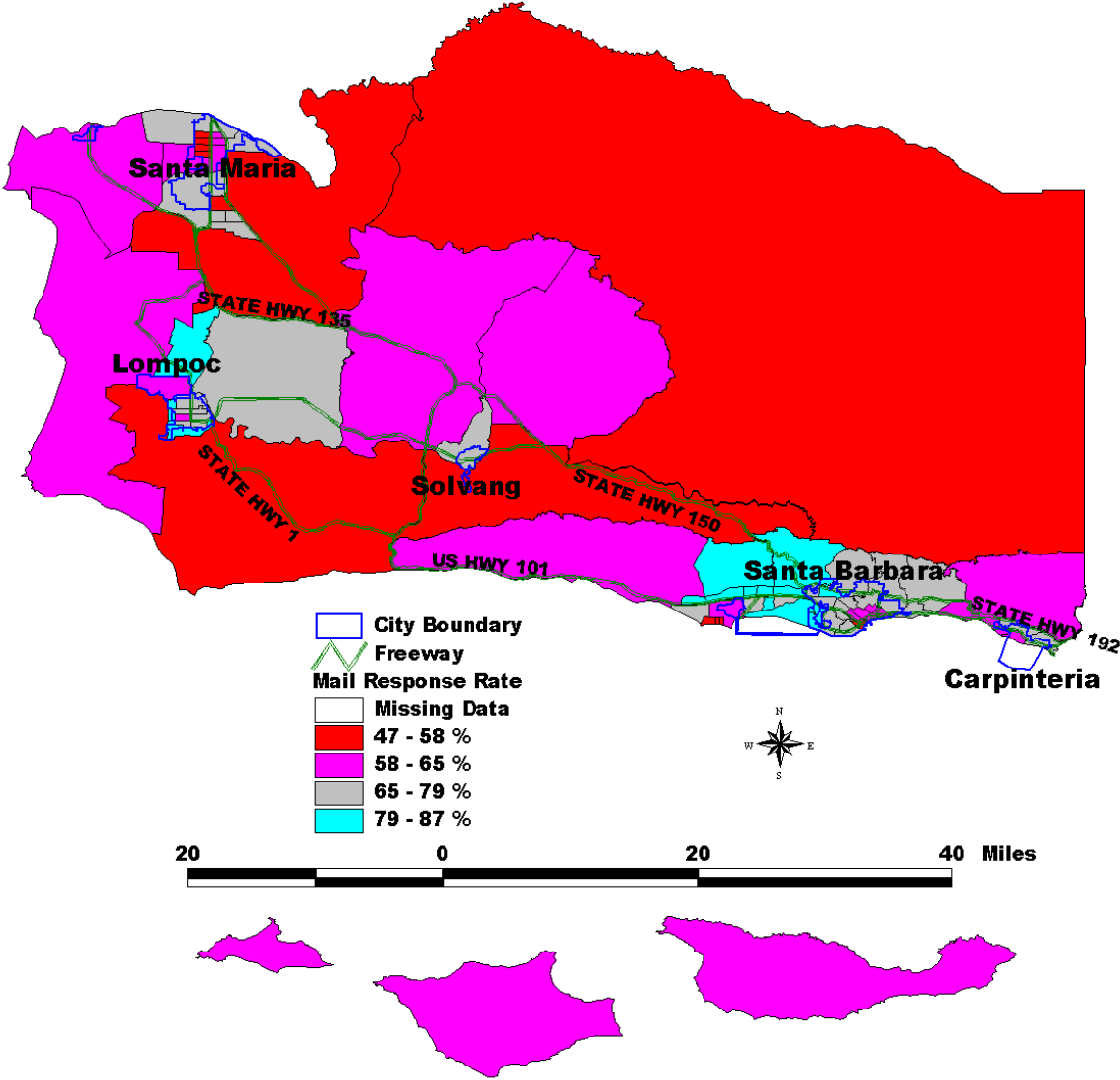
Source: 1990 US Census - Planning Database File, map prepared by the California DEPARTMENT OF FINANCE, Demographic Research Unit, 12/1/99

1990 Mail Response Rate San Mateo County by Census Tract



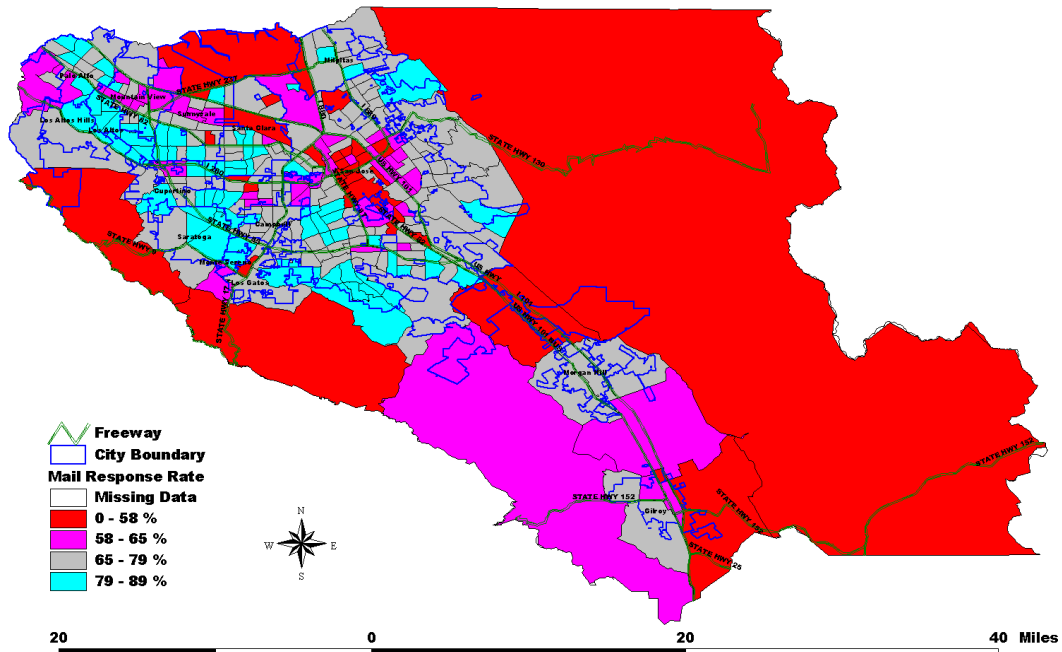
Source: 1990 US Census - Planning Database File, map prepared by the California DEPARTMENT OF FINANCE, Demographic Research Unit, 12/1/99

1990 Mail Response Rate Santa Barbara County by Census Tract



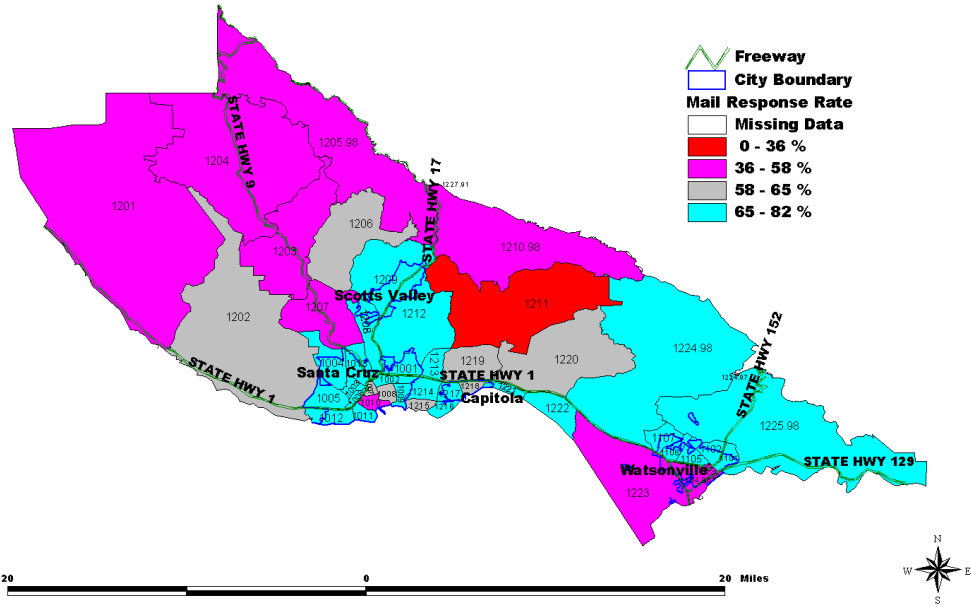
Source: 1990 US Census - Planning Database File, map prepared by the
 CA DEPARTMENT OF FINANCE, Demographic Research Unit, 11/2/99

1990 Mail Response Rate Santa Clara County by Census Tract



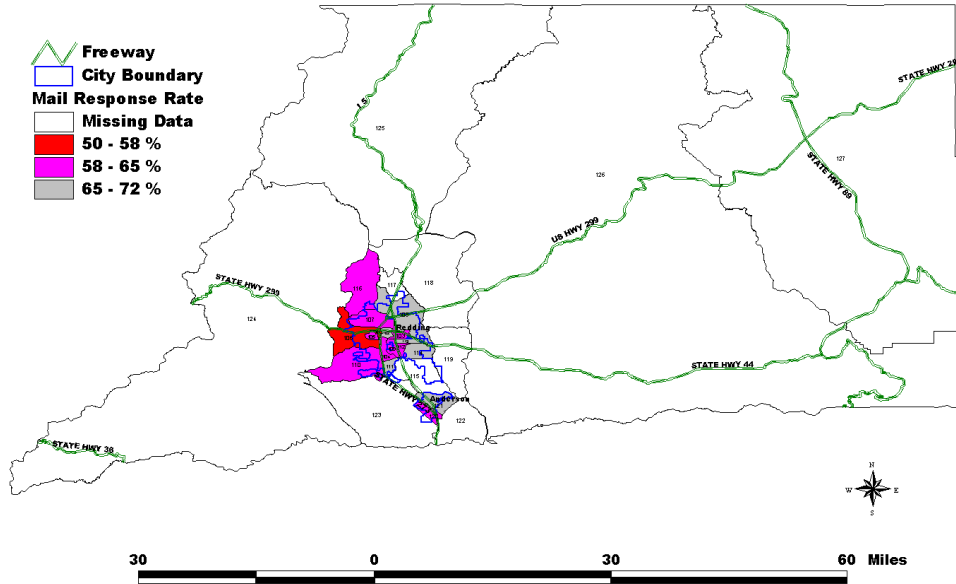
Source: 1990 US Census - Planning Database File, map prepared by the California DEPARTMENT OF FINANCE, Demographic Research Unit, 12/1/99

1990 Mail Response Rate Santa Cruz County by Census Tract



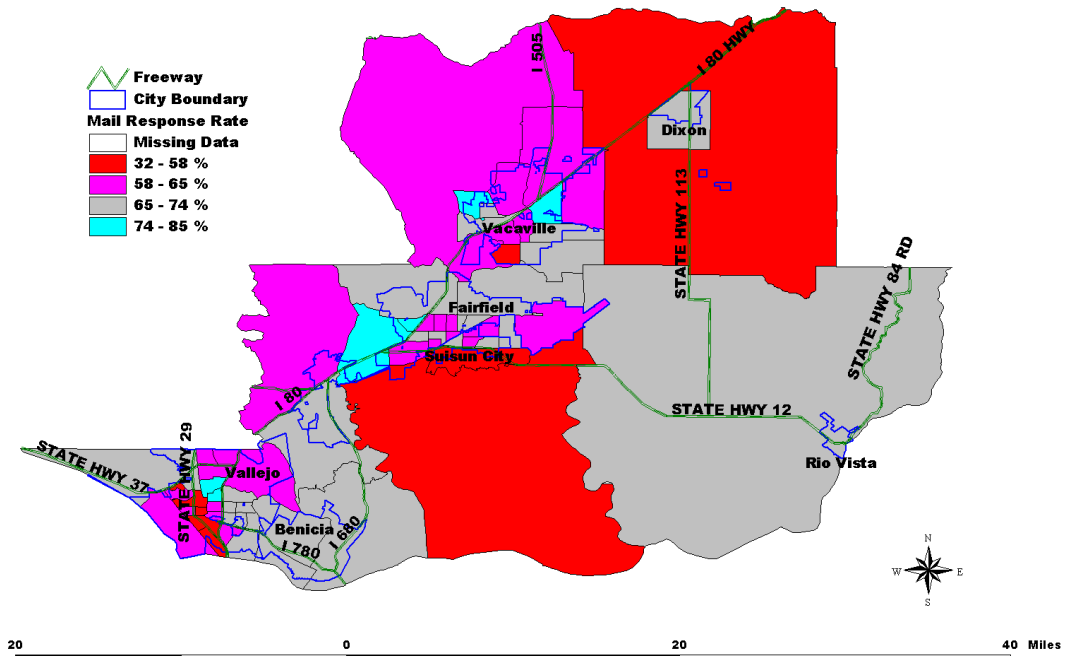
Source: 1990 US Census - Planning Database File, map prepared by the DEPARTMENT OF FINANCE, Demographic Research Unit, 12/1/99

1990 Mail Response Rate Shasta County by Census Tract



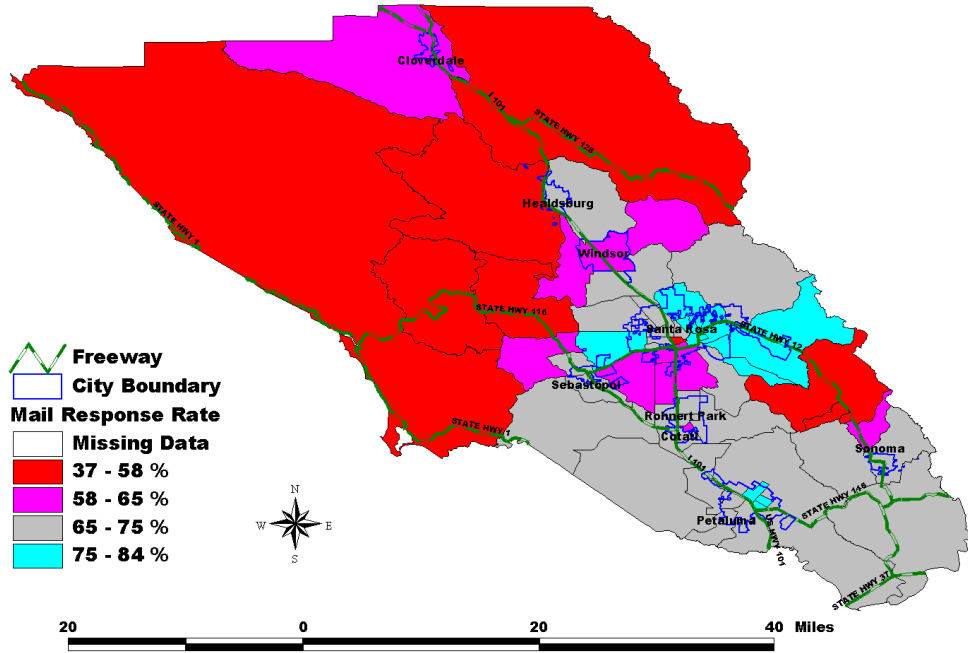
Source: 1990 US Census - Planning Database File, map prepared by the California DEPARTMENT OF FINANCE, Demographic Research Unit 12/1/99

1990 Mail Response Rate Solano County by Census Tract



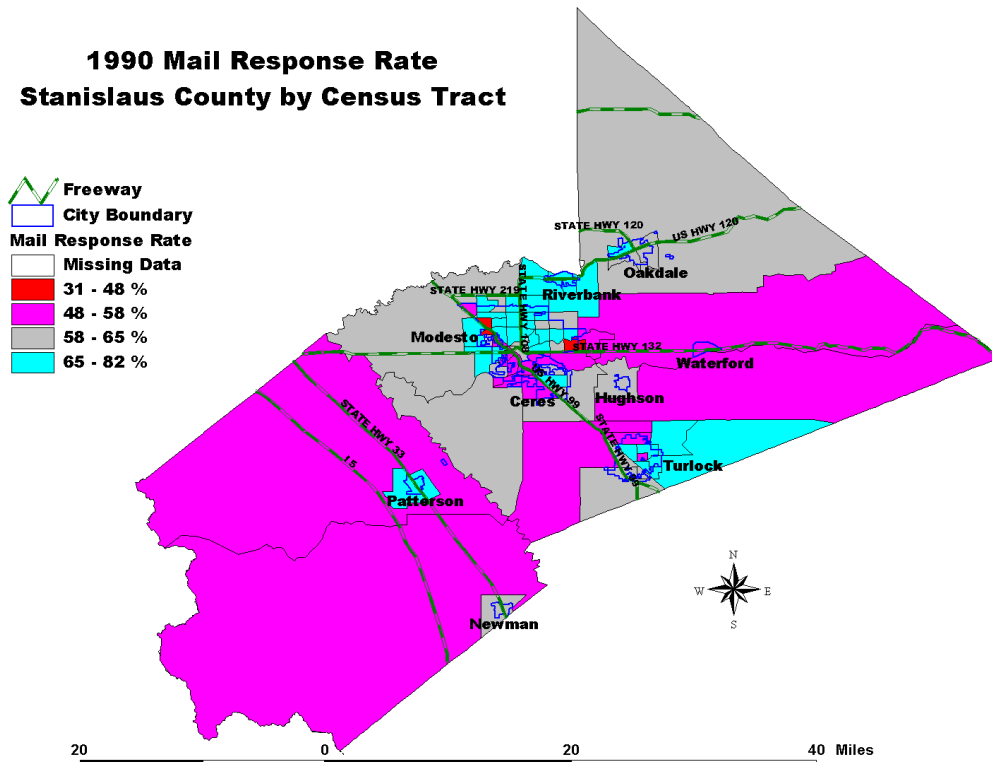
Source: 1990 US Census - Planning Database File, map prepared by the California DEPARTMENT OF FINANCE, Demographic Research Unit, 12/1/99

1990 Mail Response Rate Sonoma County by Census Tract



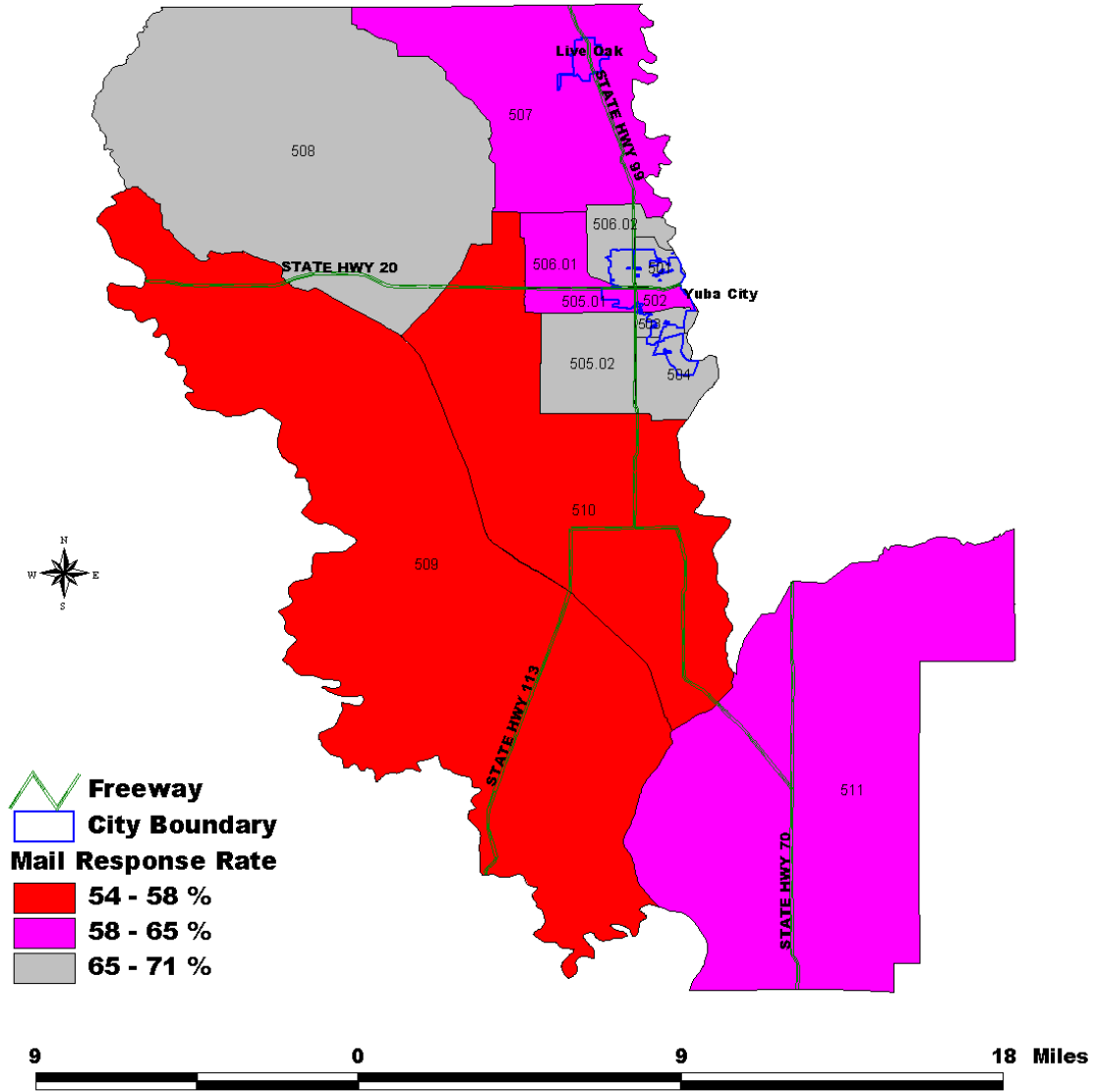
Source: 1990 US Census - Planning Database File, map prepared by the CA DEPARTMENT OF FINANCE, Demographic Research Unit, 11/3/99

1990 Mail Response Rate Stanislaus County by Census Tract



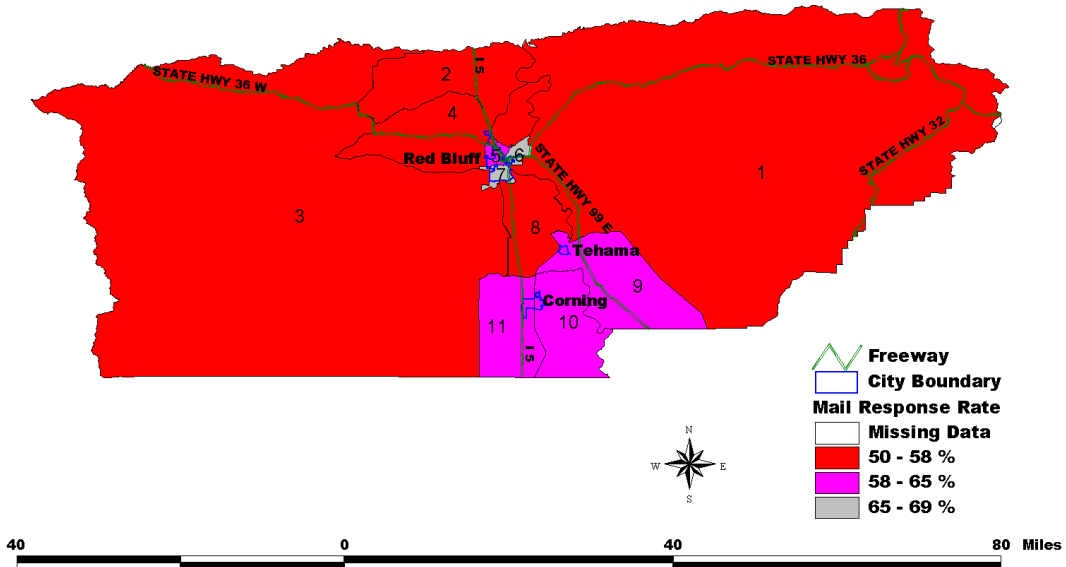
Source: 1990 US Census - Planning Database File, map prepared by the CA DEPARTMENT OF FINANCE, Demographic Research Unit, 11/2/99

1990 Mail Response Rate Sutter County by Census Tract



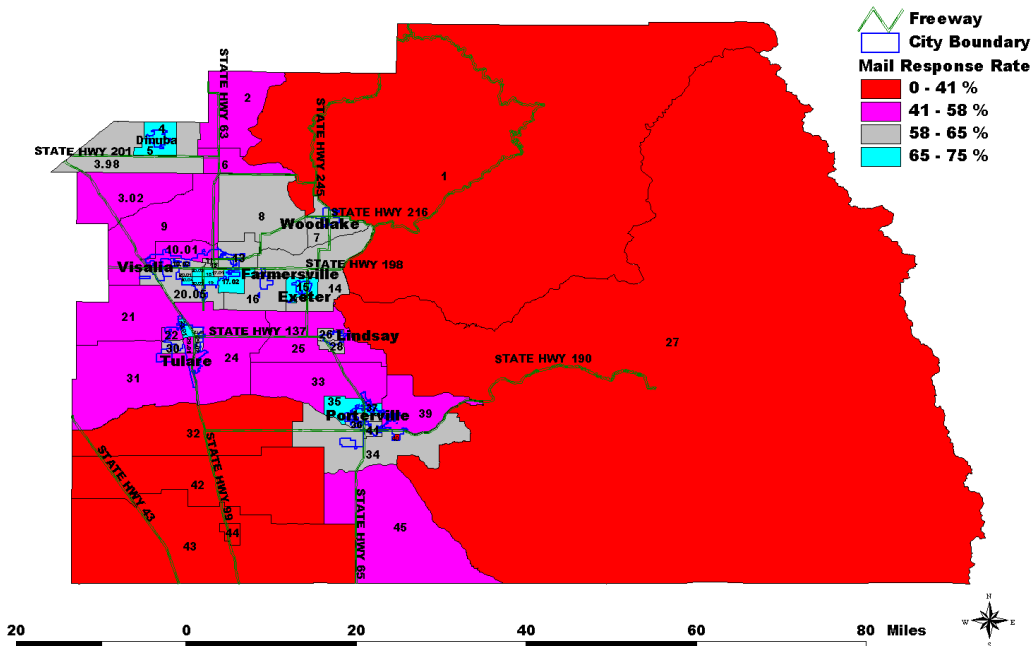
Source: 1990 US Census - Planning Database File, map prepared by the California DEPARTMENT OF FINANCE, Demographic Research Unit, 12/1/99

1990 Mail Response Rate Tehama County by Census Tract



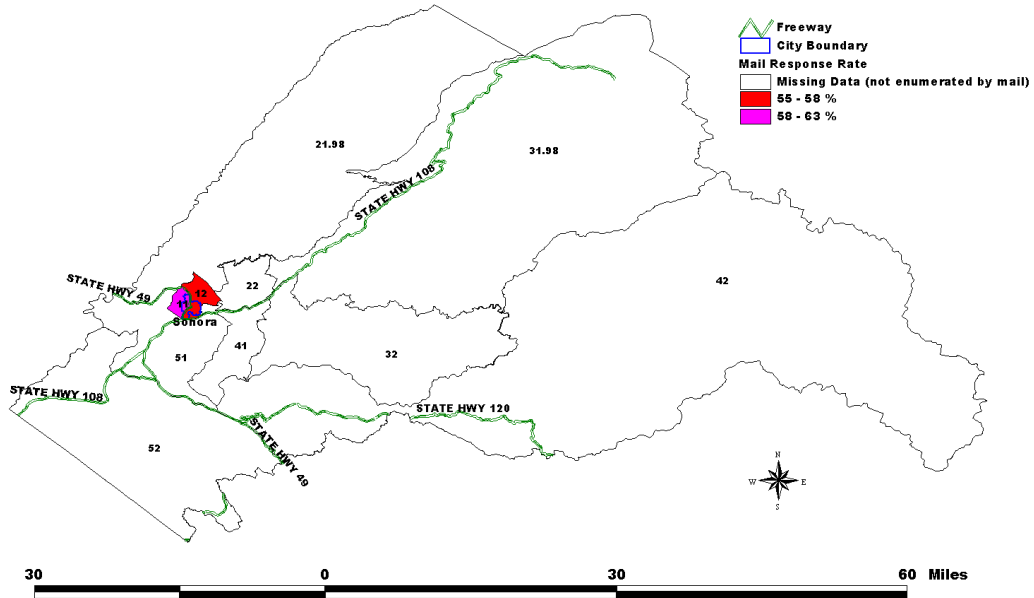
Source: 1990 US Census - Planning Database File, map prepared by the California DEPARTMENT OF FINANCE, Demographic Research Unit, 12/1/99

1990 Mail Response Rate Tulare County by Census Tract



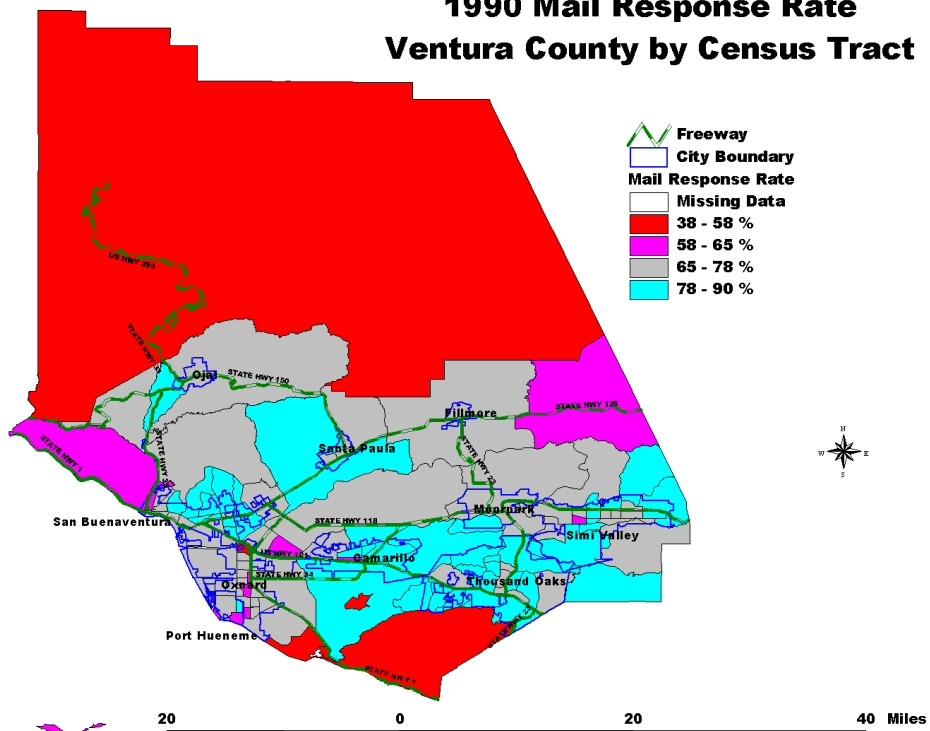
Source: 1990 US Census - Planning Database File, map prepared by the California DEPARTMENT OF FINANCE, Demographic Research Unit, 12/1/99

1990 Mail Response Rate Tuolumne County by Census Tract



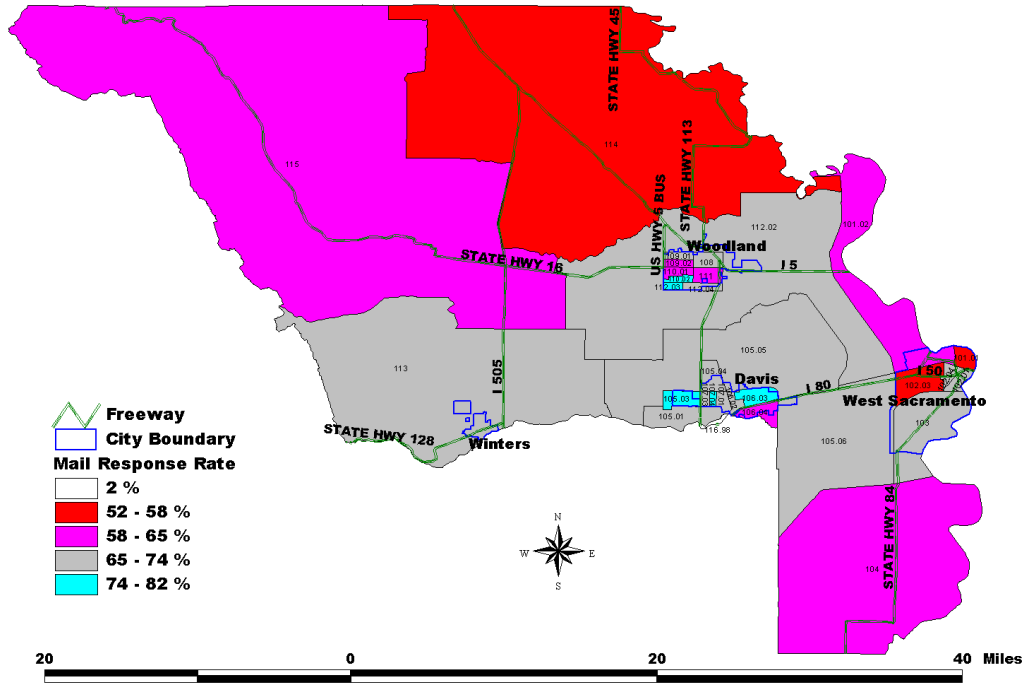
Source: 1990 US Census - Planning Database File, map prepared by the California DEPARTMENT OF FINANCE, Demographic Research Unit, 2/14/00

1990 Mail Response Rate Ventura County by Census Tract



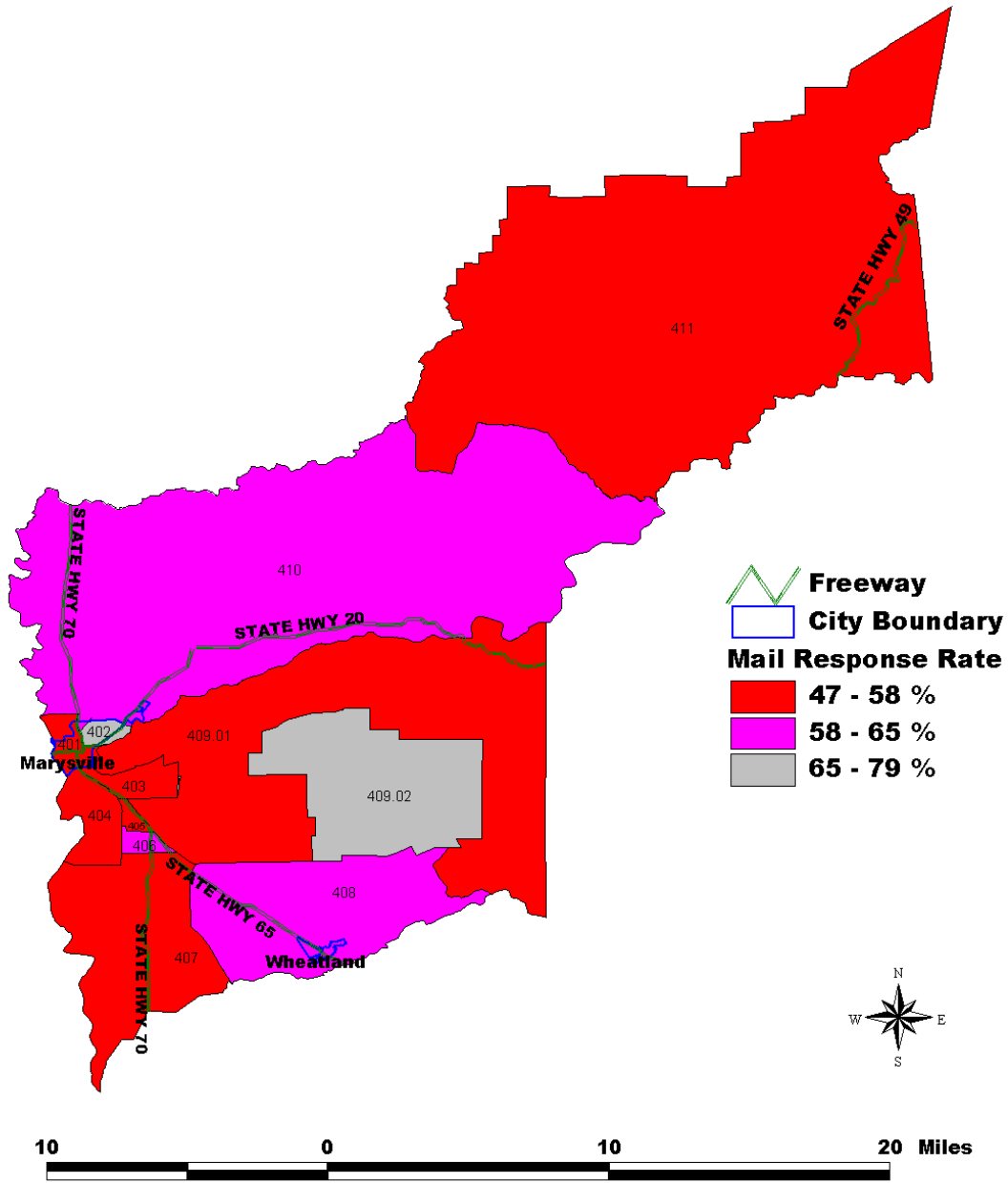
Source: 1990 US Census - Planning Database File, map prepared by the California DEPARTMENT OF FINANCE, Demographic Research Unit, 12/1/99

1990 Mail Response Rate Yolo County by Census Tract



Source: 1990 US Census - Planning Database File, map prepared by the California DEPARTMENT OF FINANCE, Demographic Research Unit, 12/1/99

1990 Mail Response Rate Yuba County by Census Tract



Source: 1990 US Census - Planning Database File, map prepared by the California DEPARTMENT OF FINANCE, Demographic Research Unit

1990 Census Undercount

Undercount, Undercount Rate, City Undercount Share

The decennial census attempts to count all persons, but always misses some people.

The 1990 **undercount** is the number of persons estimated by the Census Bureau to have been missed (not counted) in the 1990 census enumeration. These figures were estimated using a sample survey several months after the census enumeration on April 1. The sum of the undercount and the official census population count is the statistically adjusted population estimate.

Note that an undercount with a minus sign denotes an overcount. The term "undercount" in this report refers to the net undercount.

The **undercount rate** is the undercount as a percent of the adjusted population. It represents the percent of the population that was missed in the census enumeration.

The **differential undercount** refers to the difference between the undercount rate of minority groups and the rate of non-Hispanic Whites. The **overall or total undercount** refers to the undercount of all groups.

An **undercount share** is the undercount in a local area as a percent of the total undercount in a larger region. For example, city undercounts can be calculated as a share of the total county undercount.

Undercount + Official Census Population = Adjusted Population

Example: California, 1990

1990 Official Census Population	29,760,021	persons counted on April 1
1990 Undercount	+ 837,557	<u>persons undercounted</u>
1990 Adjusted Population	30,597,578	Total persons

Undercount Rate = (Undercount / Adjusted Population) X 100

Example: California, 1990

City Undercount Share = The city undercount as a percentage of the total county undercount

Example: Oakland City, Alameda County, 1990

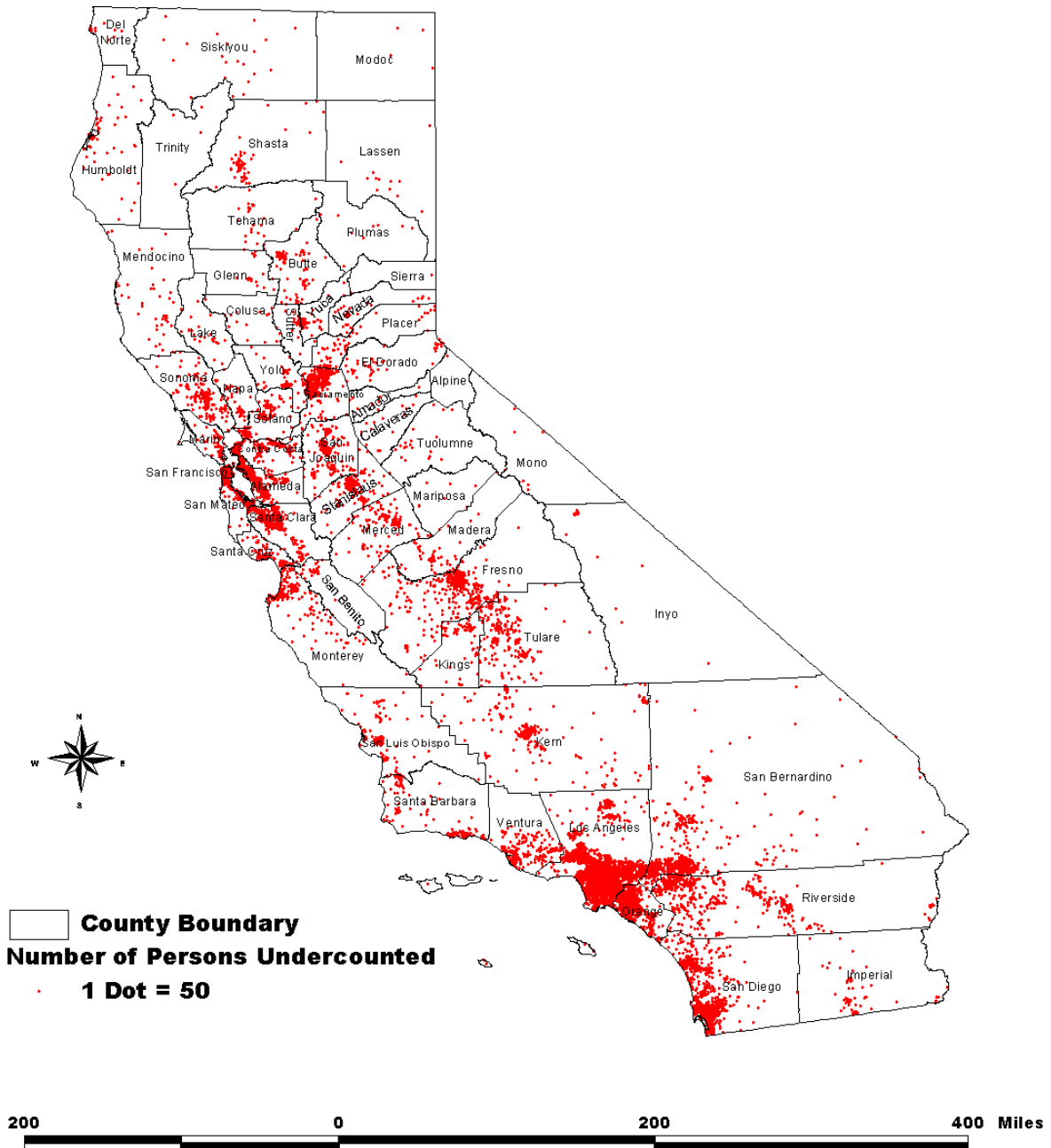
<i>1990 Undercount Rate</i>	
County	Undercount Rate
Alameda	2.89%
Alpine	3.05%
Amador	1.45%
Butte	2.53%
Calaveras	1.86%
Colusa	4.22%
Contra Costa	1.74%
Del Norte	2.39%
El Dorado	1.91%
Fresno	3.57%
Glenn	3.46%
Humboldt	2.71%
Imperial	3.50%
Inyo	3.15%
Kern	2.76%
Kings	3.54%
Lake	2.21%
Lassen	2.00%
Los Angeles	3.33%
Madera	3.48%
Marin	1.23%
Mariposa	2.53%
Mendocino	2.95%
Merced	3.81%
Modoc	2.45%
Mono	3.60%
Monterey	3.31%
Napa	2.26%
Nevada	1.65%
Orange	2.07%
Placer	1.42%
Plumas	2.26%
Riverside	2.40%
Sacramento	2.26%
San Benito	3.91%
San Bernardino	2.56%
San Diego	2.44%
San Francisco	2.90%
San Joaquin	2.96%
San Luis Obispo	2.56%
San Mateo	1.83%
Santa Barbara	3.02%

<i>1990 Net Numerical Undercount</i>	
County	Total Number of Persons Undercounted in 1990
Alameda	38,080
Alpine	35
Amador	443
Butte	4,723
Calaveras	608
Colusa	717
Contra Costa	14,254
Del Norte	575
El Dorado	2,459
Fresno	24,692
Glenn	888
Humboldt	3,323
Imperial	3,968
Inyo	595
Kern	15,447
Kings	3,726
Lake	1,143
Lassen	564
Los Angeles	305,772
Madera	3,177
Marin	2,873
Mariposa	371
Mendocino	2,443
Merced	7,066
Modoc	243
Mono	372
Monterey	12,160
Napa	2,556
Nevada	1,316
Orange	50,841
Placer	2,494
Plumas	456
Riverside	28,763
Sacramento	24,027
San Benito	1,495
San Bernardino	37,270
San Diego	62,536
San Francisco	21,621
San Joaquin	14,649
San Luis Obispo	5,708
San Mateo	12,094
Santa Barbara	11,491

Santa Clara	2.21%
Santa Cruz	2.66%
Shasta	2.07%
Sierra	2.44%
Siskiyou	2.35%
Solano	2.33%
Sonoma	2.34%
Stanislaus	2.70%
Sutter	2.64%
Tehama	2.36%
Trinity	1.91%
Tulare	3.66%
Tuolumne	1.89%
Ventura	2.15%
Yolo	3.34%
Yuba	3.12%
State	2.74%

Santa Clara	33,824
Santa Cruz	6,281
Shasta	3,110
Sierra	83
Siskiyou	1,047
Solano	8,127
Sonoma	9,286
Stanislaus	10,297
Sutter	1,748
Tehama	1,198
Trinity	254
Tulare	11,851
Tuolumne	934
Ventura	14,727
Yolo	4,882
Yuba	1,874
State	837,557

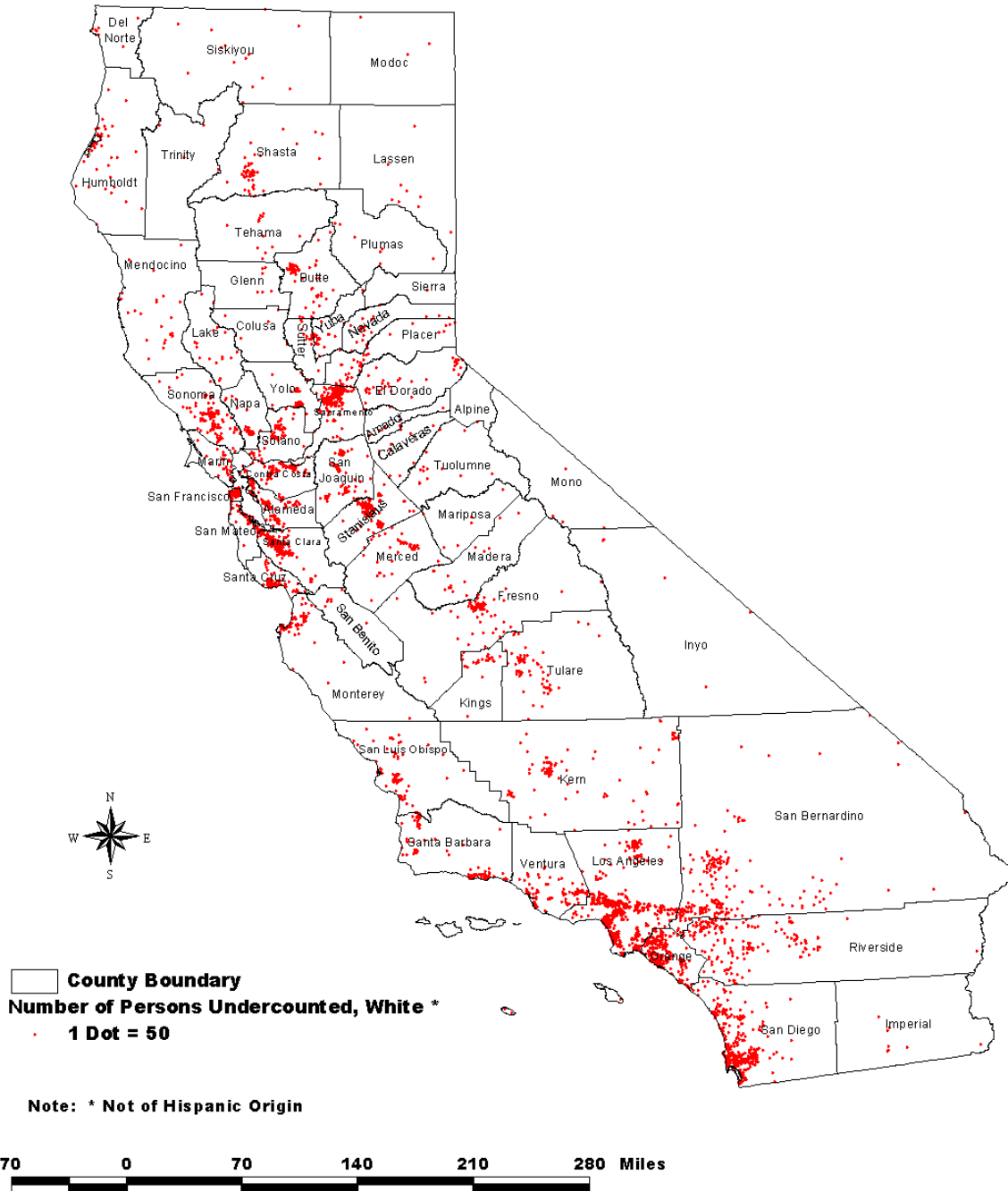
1990 Census Undercount California Counties



Source: 1990 US Census, map prepared by the California DEPARTMENT OF FINANCE, Demographic Research Unit

1990 Undercount, White *

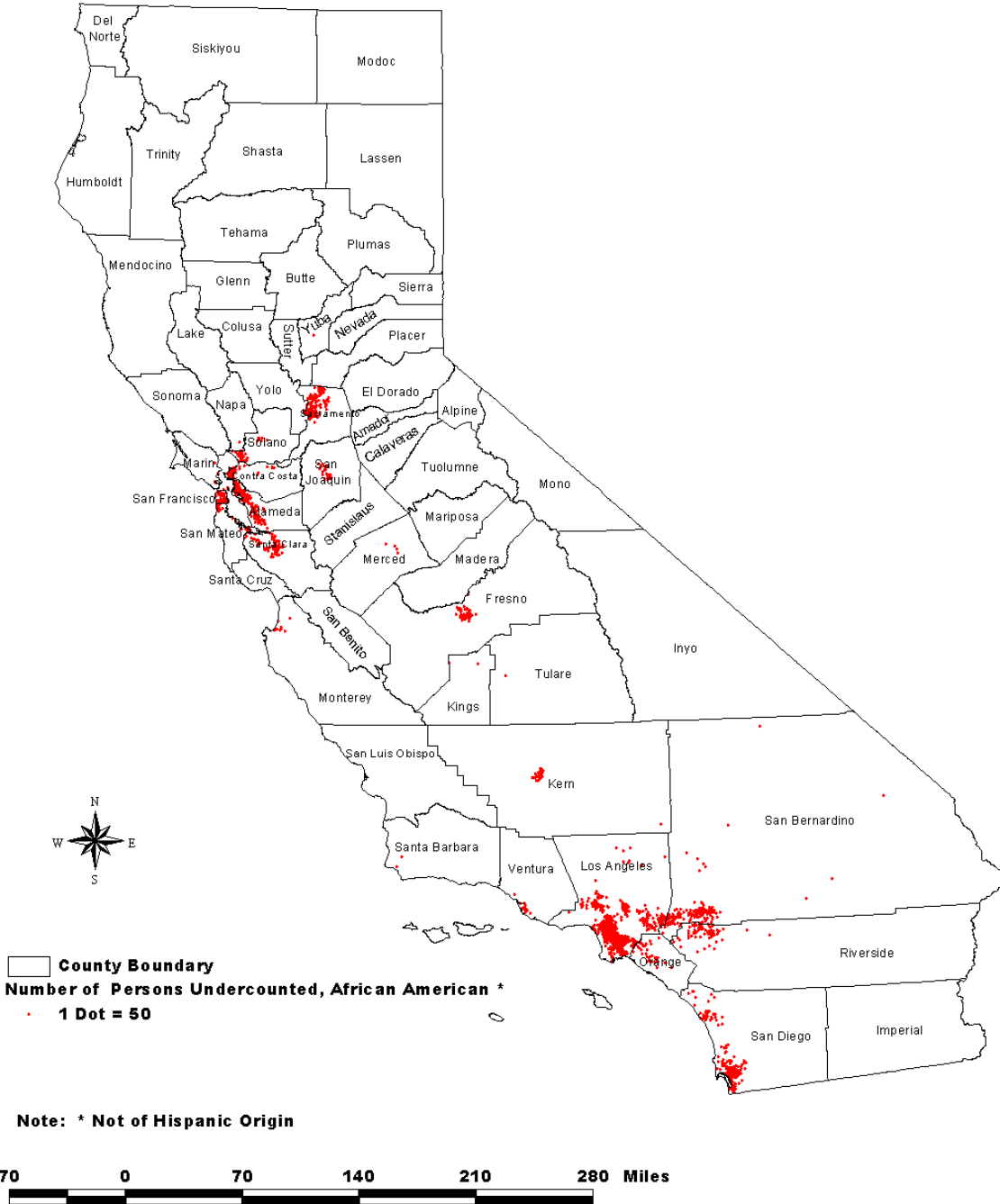
California Counties



Source: 1990 US Census, map prepared by the California DEPARTMENT OF FINANCE, Demographic Research Unit

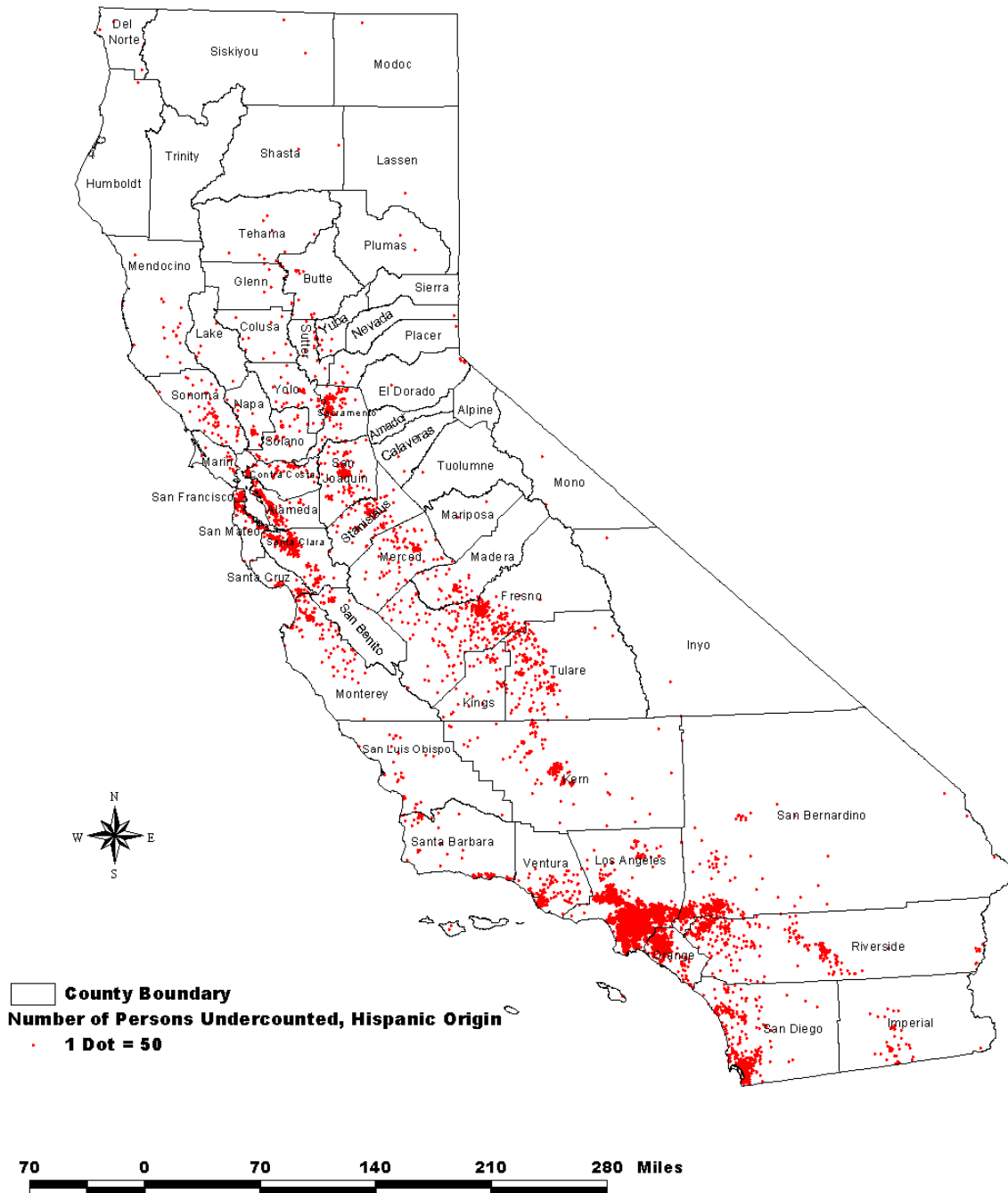
1990 Undercount, African American *

California Counties



Source: 1990 US Census, map prepared by the California DEPARTMENT OF FINANCE, Demographic Research Unit

1990 Undercount, Hispanic Origin California Counties



Source: 1990 US Census, map prepared by the California DEPARTMENT OF FINANCE, Demographic Research Unit

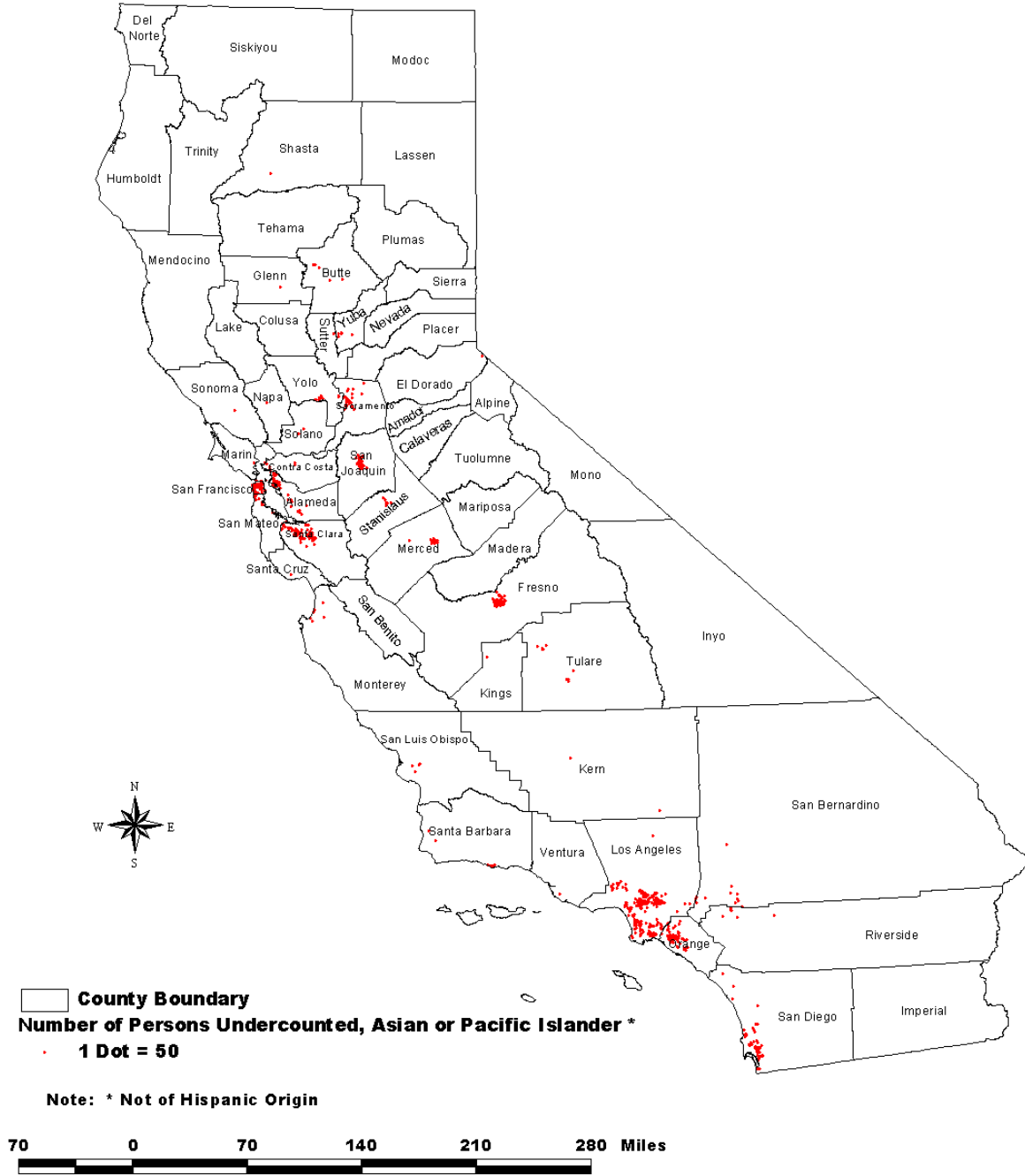
1990 Undercount, American Indian, Eskimo, or Aleut * California Counties



Source: 1990 US Census, map prepared by the California DEPARTMENT OF FINANCE, Demographic Research Unit

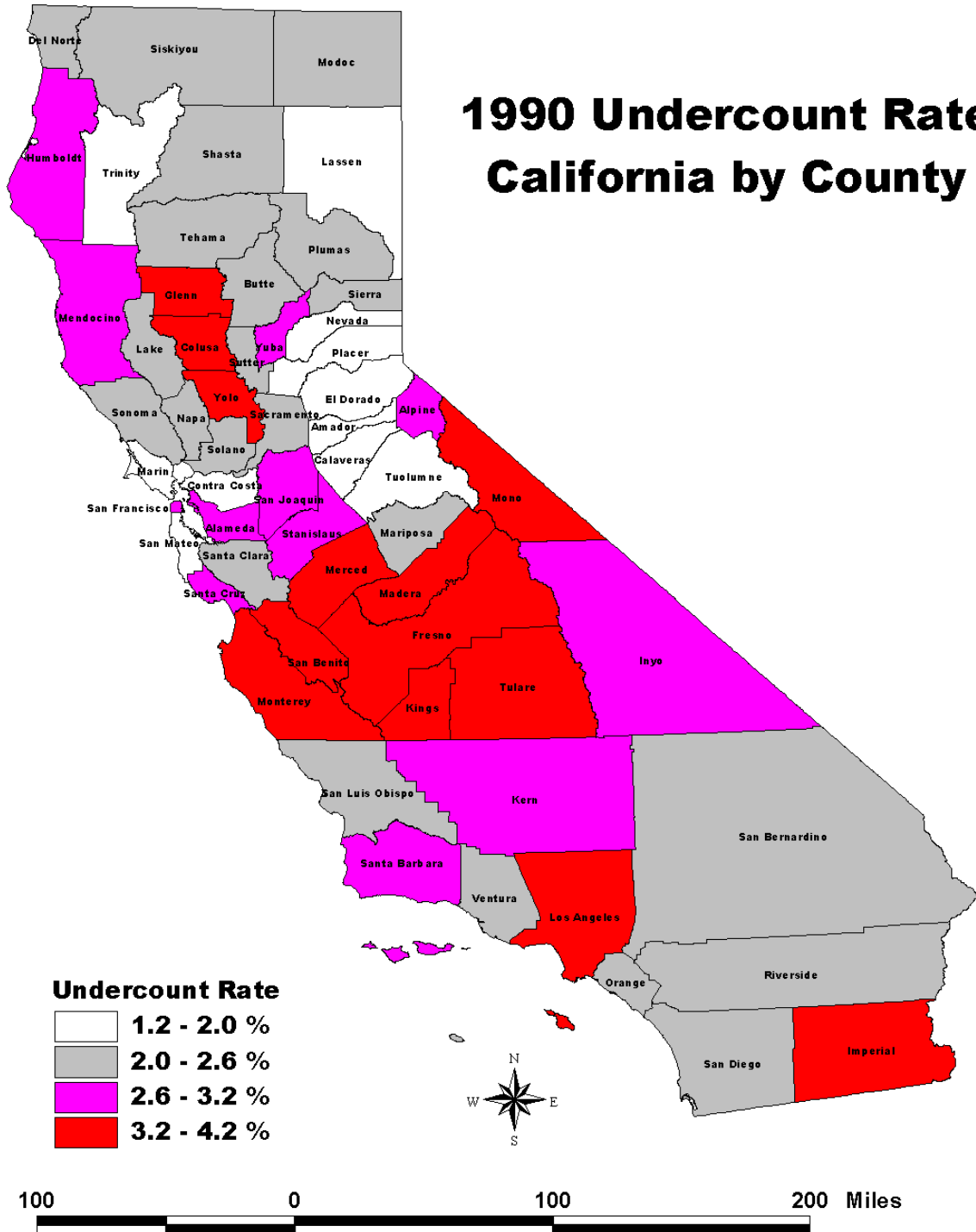
1990 Undercount, Asian or Pacific Islander *

California Counties



Source: 1990 US Census, map prepared by the California DEPARTMENT OF FINANCE, Demographic Research Unit

1990 Undercount Rate California by County



Source: 1990 US Census, map prepared by the California DEPARTMENT OF FINANCE, Demographic Research Unit, 12/1/99