

**CALIFORNIA
CURRENT POPULATION
SURVEY REPORT
MARCH 2004**

**Demographic Research Unit
915 L Street
Sacramento, CA 95814
(916) 323-4086
<http://www.dof.ca.gov>**

May 2005

Acknowledgements

This report was prepared by **Tadese Alemu**. **Cynthia Singer** made significant contributions and suggestions. **Julie Hoang** coordinated and directed the report. **Mary Heim**, Chief, and **William Schooling**, Assistant Chief, Demographic Research Unit, provided overall guidance.

SUGGESTED CITATION

State of California, Department of Finance, *California Current Population Survey Report: March 2004*. Sacramento, California. May 2005.

CALIFORNIA CURRENT POPULATION SURVEY REPORT: MARCH 2004 DATA

Sponsored jointly by the Bureau of Labor Statistics and the U.S. Census Bureau, the Current Population Survey (CPS) is the primary source of labor force data for the entire nation. Although information on the labor force and unemployment are central to the CPS, extensive data on the social, economic, and demographic characteristics of the population are also collected through supplemental questions in the Annual Social and Economic Survey (ASEC). The CPS targets a sample of 57,000 civilian non-institutional occupied households in the U.S., of which about 5,389 are in California.

DATA LIMITATIONS

The survey's estimation procedure uses independent samples for each state and inflates sample-weighted results to independent national estimates of the civilian non-institutional population by age, sex, race, and Hispanic origin. Because of the unique sample design and weighting procedures used in the March Supplement of the CPS, the population estimate for the state is not consistent with current population estimates produced by either the U.S. Census Bureau or the California Department of Finance (DOF).¹ It is important to mention here that the sample design and methods of weighting CPS data are geared towards producing estimates for the entire nation, so data for states are not as reliable as national data.

As the primary purpose of the CPS is to gather labor force data, the sampling procedure used to determine the size of the survey is based on the Coefficient of Variation (CV) of the level of unemployment. This procedure ensures the allocation of a sample big enough to maintain a certain level of CV on national monthly estimates of the unemployment level and unemployment rate. However, it limits the reliability of demographic information such as age, sex, race/ethnicity, and other variables closely correlated with the labor force variables. (For details on sample method, please go to "Technical Paper 63RV: Current Population Survey - Design & Methodology," issued March 2002 at <http://www.census.gov/prod/2002pubs/tp63rv.pdf>).

All estimates developed from the CPS are subject to sampling error. The magnitude of the error is inversely related to the size of the population being estimated. Estimates for the nation are better than those for the state. Estimates for a large segment of the state (e.g., total employed) are better than for a smaller segment (e.g., employment in retail trade). Differences in an estimate over time may be due to sampling error rather than actual change. Data items with broad confidence intervals indicate large sampling errors. Estimates of 100,000 or less have large standard errors and are denoted with *italic type*.

Estimates for a given year, particularly 1994 and 1995, may differ from earlier years by more than can be attributed to real changes in population characteristics. Beginning in 2002, CPS estimates are based on the 2000 census-based population controls. From 1994 to 2001, population controls were based on 1990 census data, making comparability to 2002 and subsequent years difficult. According to the Census

¹The CPS and DOF estimates should not be expected to be the same. The CPS estimate is for the civilian non-institutional population including military personnel living off-base or in civilian housing on-base, while the DOF estimate is for the entire resident population of the state.

Bureau, differences could be disproportionately greater for certain subpopulation groups than for the total populations. The use of summary measures—such as means, medians, and percentages—is recommended.

USER'S NOTE

Beginning in 2003, persons could report more than one race. As a result, the data on race in 2004 are directly comparable only to those collected in 2003 but not to those in previous years. The CPS has also introduced the North American Industry Classification System (NAICS) based on the Census 2000 industry and occupation codes in 2003. The new classification system affected almost all industry and occupation variables since then. For details on differences between the NAICS and SIC (Standard Industrial Classification) classifications, go to: <http://www.bls.census.gov/cps/asec/2003/sfiledif.htm>.

Race/ethnicity tables were constructed using mutually exclusive categories. The response to the Spanish, Hispanic, or Latino origin question took priority when determining race/ethnicity resulting in Hispanic and non-Hispanic categories. The non-Hispanic categories are: White; Black; Asian; American Indian & Alaskan Native; Hawaiian/Pacific Islander; and Two or More Races. The Hispanic category includes persons of Spanish, Hispanic, or Latino origin who may be of any race. Except for Table 1, race/ethnic groups do not add up to the total population because only major race categories and Hispanic origin were examined.

To assist in determining the size of the sampling error for an estimate, 90 percent confidence intervals were calculated for selected data items and included in Appendix A.

More information on the Annual Social and Economic Survey (March Supplement) of the Current Population Survey can be obtained from <http://www.census.gov/apsd/techdoc/cps/cpsmar03.pdf>.

TABLE OF CONTENTS

Acknowledgements.....	ii
Data Limitations.....	iii
Users' Note.....	iv

I. General Population Characteristics

Table	1. Persons by Race/Ethnicity.....	2
Figure	1. Population Shares by Race/Ethnicity	2
Table	2. Persons by Age, Race/Ethnicity, and Sex	3
Figure	2. California Population Pyramid	4
Figure	3. White Population Pyramid.....	4
Figure	4. Hispanic Population Pyramid.....	4
Figure	5. Asian Population Pyramid.....	5
Figure	6. Black Population Pyramid.....	5
Figure	7. Median Age by Race/Ethnicity and Sex	5
Table	3. Persons (15+) by Marital Status and Sex	6
Figure	8. Distribution of Persons (15+) by Marital Status and Sex	6
Table	4. Persons (15+) by Marital Status, Race/Ethnicity, and Sex	7
Figure	9. Persons (15+) by Marital Status and Race/Ethnicity	7
Table	5. Persons (15-44) Never Married by Age and Sex	8
Table	6. Persons (65+) Widowed by Age and Sex	8
Figure	10. Percent of Persons (65+) Widowed by Age and Sex	8
Table	7. Persons by Household Size and Race/Ethnicity	9
Figure	11. Distribution of Persons by Household Size and Race/Ethnicity	9
Figure	12. Mean Household Size by Race/Ethnicity.....	10
Table	8. Persons (65+) by Age, Sex, and Household Size.....	10
Table	9. Households and Persons by Household Size.....	11
Figure	13. Distribution of Households and Persons by Household Size.....	11
Table	10. Households by Housing Tenure and Household Size	11
Figure	14. Distribution of Households by Household Size and Housing Tenure	12
Table	11. Households by Household Type and Presence of Children.....	12
Table	12. Persons (0-17) by Age and Presence of Parents in Family.....	12

II. Health and Health Insurance

Table	13. Persons (21+) by Self-Reported Health Appraisal and Sex.....	13
Figure	15. Reported Health Status of Persons (21+) by Sex.....	13
Table	14. Persons with 2003 Health Insurance by Type.....	14

Table 15. Persons with Any 2003 Health Insurance Coverage by Age	14
Table 16. Persons with 2003 Medicaid (“Medi-Cal”) Coverage by Age and Sex.....	14
Table 17. Persons with 2003 CHAMPUS, CHAMPVA, VA, or Military Health Care Coverage by Age and Sex	15
Table 18. Persons with 2003 Medicare Health Insurance Coverage by Age and Sex	15
Table 19. Persons with 2003 Private Health Insurance Coverage by Age and Sex.....	15

III. Mobility

Table 20. Persons by Mobility Status and Housing Tenure.....	16
Table 21. Persons Moving by Age and Sex	16
Figure 16. Distribution of Movers by Age and Sex	17
Table 22. Type of Move for Persons Moving	17
Table 23. Persons Moving to California by US Region of Former Residence.....	17
Table 24. Persons (by Sex) and Households Moving to California.....	18
Table 25. Persons Moving to California by Age	18
Table 26. Persons (by Sex) and Households Moving from California.....	18
Table 27. Persons Moving from California by Age	18

IV. Foreign Born

Table 28. Foreign-Born Persons by Age and Sex	19
Figure 17. Distribution of Foreign-Born Persons by Age and Sex	19
Table 29. Persons by Race/Ethnicity and Nativity.....	20
Figure 18. Race/Ethnicity for Foreign Born and Native	20
Table 30. Foreign-Born Persons by Year of Entry and Citizenship Status.....	20
Table 31. Foreign-Born Persons by Country of Birth and Citizenship Status.....	21
Figure 19. Distribution of Foreign-Born Persons by Country of Birth	21
Figure 20. Distribution of Foreign-Born Persons by Country of Birth and Citizenship Status	21

V. Educational Attainment

Table 32. Persons (25+) by Educational Attainment and Race/Ethnicity.....	22
Figure 21. Distribution of Persons (25+) by Educational Attainment and Race/Ethnicity	23
Table 33. Persons (25+) by Educational Attainment and Nativity	23
Figure 22. Distribution of Persons (25+) by Educational Attainment and Nativity	24
Table 34. Persons (25+) Reporting a High School Diploma or Higher by Age and Sex.....	24
Table 35. Persons (25+) Reporting a BA/BS Degree or Higher by Age and Sex.....	24
Table 36. Persons (25+) with a BA/BS Degree or Higher by Degree Type and Sex	25
Table 37. Persons (25+) by Educational Attainment and Personal Income (2003).....	25

Figure 23.	Distribution of Persons (25+) by Educational Attainment and Personal Income (2003).....	25
Table 38.	Median Personal Income (2003) for Persons (25+) by Educational Attainment and Race/Ethnicity	26
Figure 24.	Median Personal Income (2003) for Persons (25+) by Educational Attainment and Race/Ethnicity.....	26
Table 39.	Median Personal Income (2003) for Persons (25+) by Educational Attainment and Sex	27
Figure 25.	Median Personal Income (2003) for Persons (25+) by Educational Attainment and Sex.....	27

VI. Labor Force Characteristics

Table 40.	Persons (16+) by Age, Civilian Labor Force Participation, and Sex.....	28
Figure 26.	Persons (16+) by Age, Civilian Labor Force Participation Rate, and Sex.....	29
Table 41.	Persons (16+) by Employment Status, Race/Ethnicity, and Sex.....	29
Figure 27.	Unemployment Rate by Race/Ethnicity and Sex.....	30
Table 42.	Persons (16+, Employed) by Major Industrial Group and 2003 Mean & Median Earnings.....	30
Table 43.	Persons (16+, Employed) by Major Occupational Group and 2003 Mean & Median Earnings.....	31
Table 44.	Families by Number of Persons Employed and Median Family Income (2003).....	31
Figure 28.	Distribution of Families by Number of Persons Employed and Median Family Income (2003).....	31

VII. Income

Table 45.	Persons (15+) by 2003 Personal Income and Sex.....	32
Table 46.	Persons (65+) by Sex and Receipt of Social Security and Supplemental Security Income	33
Table 47.	Persons (65+) by Selected Types of Income Received (2003) and Sex.....	33
Table 48.	Households by Household Income (2003) and Families by Family Income (2003) and Race/Ethnicity of Householder	33
Figure 29.	Families by Race/Ethnicity of Householder Median Family Income (2003)	34
Table 49.	Households by Age of Householder and Mean and Median Household Income (2003).....	34
Figure 30.	Median Household Income (2003) by Age of Householder	34
Table 50.	Households by Size of Household and Mean and Median Household Income (2003).....	35
Table 51.	Families by Size of Family and Mean and Median Family Income (2003).....	35
Table 52.	Households by Selected Types of 2003 Household Income Source.....	35

VIII. Poverty

Table 53.	Persons by Race/Ethnicity and Poverty Level Status	36
Figure 31.	Percentage of Persons by Poverty Status and Race/Ethnicity.....	36
Table 54.	Persons Below the Poverty Level (2003) by Age and Sex	37
Figure 32.	Percentage of Persons Below the Poverty Level (2003) by Age and Sex	37
Table 55.	Persons Below the Poverty Level (2003) by Race/Ethnicity and Age.....	37
Figure 33.	Percentage of Persons Below the Poverty Level (2003) by Age and Race/Ethnicity.....	38
Table 56.	Families by Poverty Status, Presence of Children, and Family Type.....	38
Table 57.	Families with Children by Poverty Status and Family Type	39
Table 58.	Families with No Children by Poverty Status and Family Type	39
Figure 34.	Distribution of Families with Children Living Below Poverty by Family Type..	39

Appendices

Appendix A.	Standard Errors and Confidence Intervals for Selected Characteristics.....	40
Appendix B.	Major Changes in the Current Population Survey Since 1985	46
Appendix C.	Sample Size of California Portion of the March Supplement to the Current Population Survey, 1987-2004.....	47

I. General Population Characteristics

The estimated population of California in March 2004 was 35,394,062, adding more than a quarter million (235,157) over 2003. Whites, the State's largest race group, constituted nearly half of the population (46.6 percent); Hispanics make up one-third (32.9 percent); and the rest altogether accounted for a fifth of the total (20.5 percent). As shown in Figure 1, the relative share of each race group remained unaltered since last year.

Children under 18 constituted 27 percent of the overall population. Hispanics represented the largest child population in the State (43.8 percent), followed by Whites (35.6 percent). Population in the working age group (18-64) accounted for 62.5 percent of the State's population. Among the working age group, Whites had the highest proportion (48 percent), followed by Hispanics (31.4 percent). The population over 65 was about 10.5 percent. Whites make up two-thirds (66.5 percent) of the State's aging population. Overall, Whites had 20.7 percent of their population under 18 and 15 percent over 64; Asians had 22.6 percent under 18 and 11.7 percent over 64; Hispanics had 36 percent under 18 and only 4.5 percent over 64; Blacks had 31 percent under 18 and 8.5 percent over 64.

Data on the age-sex distribution of the population revealed a modest dominance of males until age 35. After 35 females slightly outnumbered males (see Figure 2). The overall sex ratio of the population was 49.7 percent male and 50.3 percent female. However, the male-female sex ratio was highest for Hispanics (102 males for every 100 females) and lowest for Blacks (90 males for every 100 females). The median age ranged from 26 years for Hispanics to 40 years for Whites (see Figure 7).

Among the 27.5 million persons 15 years and older, over two-thirds (67.6 percent) had ever been married and only one-third were never married. The proportion married accounted for 76.6 percent of the population ever married, the widowed represent 7.5 percent, and the separated 3.1 percent. While men accounted for 46.1 percent of the ever married and 55.8 percent of the never married, women accounted for 53.9 percent of the ever married and 44.2 percent of the never married.

Marital patterns differed considerably by age, sex, and race/ethnicity. Whites had the highest proportion of ever married (72.1 percent) and Blacks had the highest proportion of never married (46.6 percent). Among persons between 20 to 44 years, the chance of remaining single was higher for males than for females. For people 65 years and over, the proportion widowed was 13.7 percent for men and 40.3 percent for women.

During the year, California's 35.4 million residents lived in 12.7 million households; the average household had 2.8 persons. Close to one-quarter of Hispanics (24.6 percent) lived in households with six or more persons, compared with 16.5 percent of Blacks, 13.2 percent of Asians, and 6.5 percent of Whites. The average household size was highest for Hispanic households (3.8 persons per household) and lowest for Whites (2.3 persons per household). Nearly one out of five (19.3 percent) persons age 65 and over lived in households with three or more persons. The proportion of women 65 years and over living in households with three or more persons varied with each successively older age group from 51.8 percent to 58.7 percent (see Table 8).

Of the State's 12.7 million households, 59.2 percent were owner-occupied and 40.8 percent were renter-occupied. The average household size for owner- and renter-occupied households was 2.8 and 2.7 persons, respectively. Approximately 69 percent of all households consisted of family households with two or more related persons and the rest consisted of nonfamily households. Three-fourths (74.5 percent) of family households were married-couple families, 17.9 percent were female householders with no husband present, and only 7.6 percent were male householders with no wife present.

Finally, a look at the living arrangement of children under 18 revealed that more than two-thirds (69.9 percent) were living with both parents; over a quarter (26.2 percent) were living with a single parent; and 3.8 percent were living with neither parent. The majority (82.9 percent) of children who lived with a single parent lived with their mothers.

Table 1. Persons by Race/Ethnicity

Race/Ethnicity	Number	Percent
White	16,484,212	46.6%
Hispanic	11,661,759	32.9%
Asian	4,099,438	11.6%
Black	2,192,479	6.2%
American Indian	130,034	0.4%
Hawaiian/Pacific Islander	251,945	0.7%
Two or More	574,195	1.6%
Total*	35,394,062	100.0%

* Total civilian non-institutional population. Includes members of armed forces living off military bases or living in civilian housing on base.

Figure 1. Population Shares by Race/Ethnicity

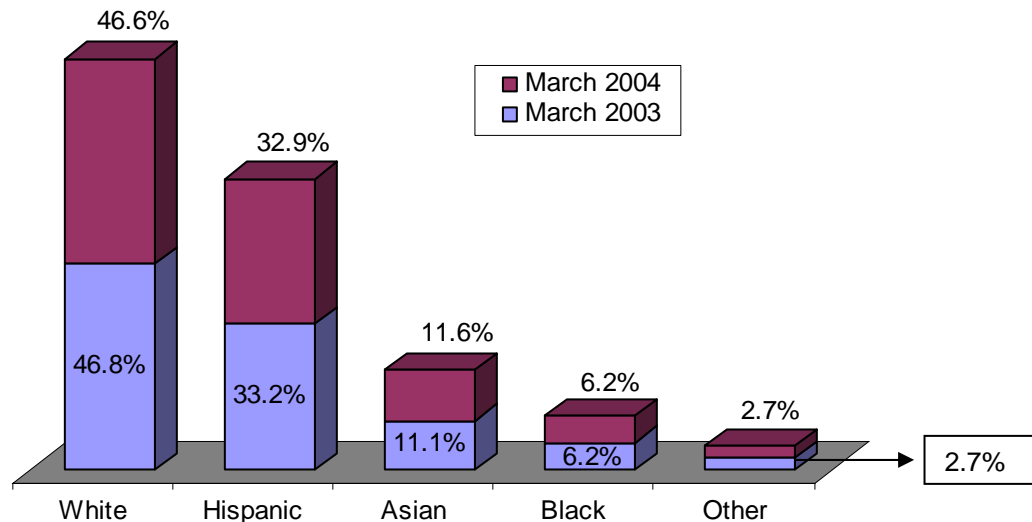


Figure 21. Distribution of Persons (25+) by Educational Attainment and Race/Ethnicity

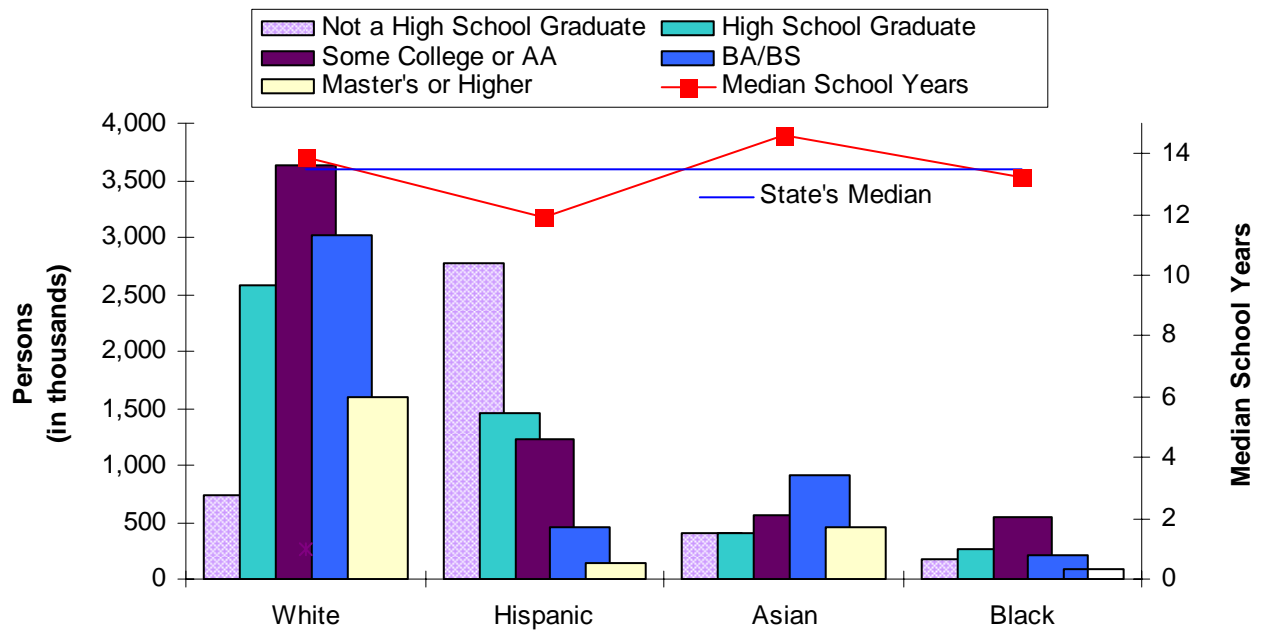


Table 33. Persons (25+) by Educational Attainment and Nativity

Educational Attainment	Native Born	Foreign Born		Total
		Naturalized	Not Citizen	
Not a High School Graduate	1,163,352	867,969	2,107,789	4,139,111
High School Graduate	3,263,648	765,825	812,530	4,842,003
Some College or AA	4,860,437	696,169	558,619	6,115,225
BA/BS	3,351,067	737,816	597,605	4,686,488
Master's or Higher	1,631,398	400,592	280,919	2,312,908
Total	14,269,903	3,468,371	4,357,461	22,095,735
Median Years Completed	13.6	13.8	12.0	13.5
Average Years Completed	14.0	12.6	10.4	13.1

Figure 22. Distribution of Persons (25+) by Educational Attainment and Nativity

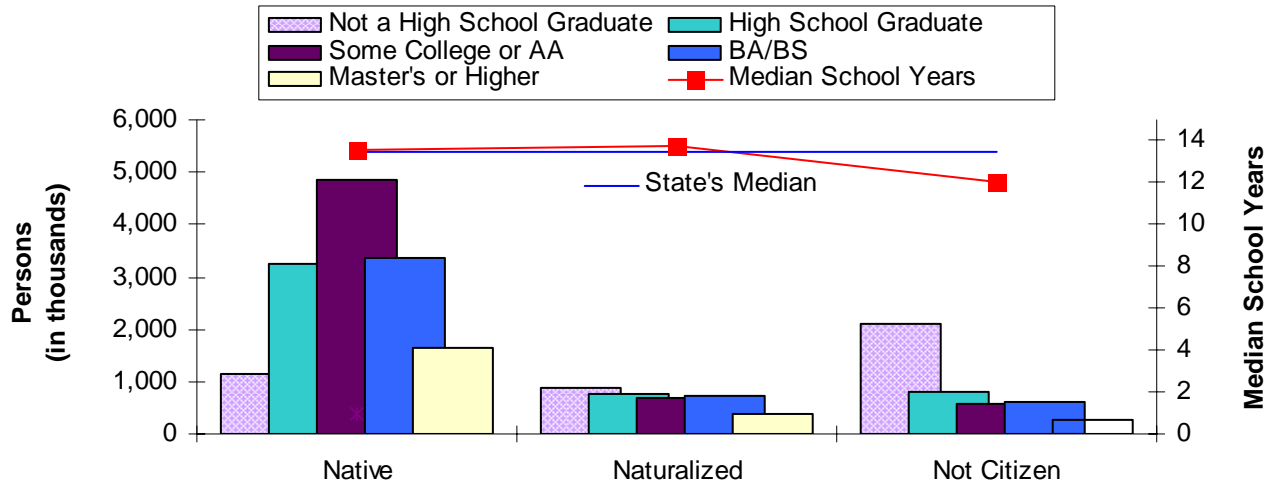


Table 34. Persons (25+) Reporting a High School Diploma or Higher by Age and Sex

Age Group	Males	Percent	Females	Percent	Total	Percent
25-34	1,967,899	80.0%	1,966,584	82.4%	3,934,483	81.2%
35-49	3,227,574	80.4%	3,330,895	81.4%	6,558,468	80.9%
50-64	2,231,266	83.9%	2,398,334	86.5%	4,629,600	85.2%
65 +	1,316,286	80.8%	1,517,787	73.0%	2,834,073	76.4%
Total	8,743,025	81.2%	9,213,599	81.3%	17,956,624	81.3%

Table 35. Persons (25+) Reporting a BA/BS Degree or Higher by Age and Sex

Age Group	Males	Percent	Females	Percent	Total	Percent
25-34	754,490	30.7%	785,206	32.9%	1,539,696	31.8%
35-49	1,254,644	31.3%	1,240,094	30.3%	2,494,738	30.8%
50-64	1,059,902	39.9%	879,729	31.7%	1,939,630	35.7%
65 +	632,126	38.8%	393,205	18.9%	1,025,331	27.6%
Total	3,701,163	34.4%	3,298,233	29.1%	6,999,396	31.7%

Table 36. Persons (25+) with a BA/BS Degree or Higher by Degree Type and Sex

Highest Degree Attained	Males	Females	Total
Bachelor's (BA, BS, AB, etc.)	2,336,352	2,350,136	4,686,488
Master's (MA, MS, MBA, etc.)	876,896	683,537	1,560,433
Professional or Doctorate (PhD, Md, LLB, etc.)	487,915	264,561	752,475
Total	3,701,163	3,298,233	6,999,396

Table 37. Persons (25+) by Educational Attainment and Personal Income (2003)

Attainment	Less than \$9,999	\$10,000-\$24,999	\$25,000-\$39,999	\$40,000-\$59,999	\$60,000 and Over	Total	Median Income
Not a High School Graduate	1,712,144	1,656,782	505,366	187,048	77,771	4,139,111	\$12,000
High School Graduate	1,441,910	1,401,015	982,414	581,371	435,292	4,842,003	\$19,708
Some College or AA	1,251,005	1,463,691	1,258,941	1,118,635	1,022,954	6,115,225	\$28,308
BA/BS	859,901	787,731	714,925	861,849	1,462,082	4,686,488	\$39,454
Master's or Higher	266,907	296,953	209,460	388,094	1,151,493	2,312,908	\$59,704
Total	5,531,867	5,606,172	3,671,107	3,136,997	4,149,592	22,095,735	\$24,466

Figure 23. Distribution of Persons (25+) by Educational Attainment and Personal Income (2003)

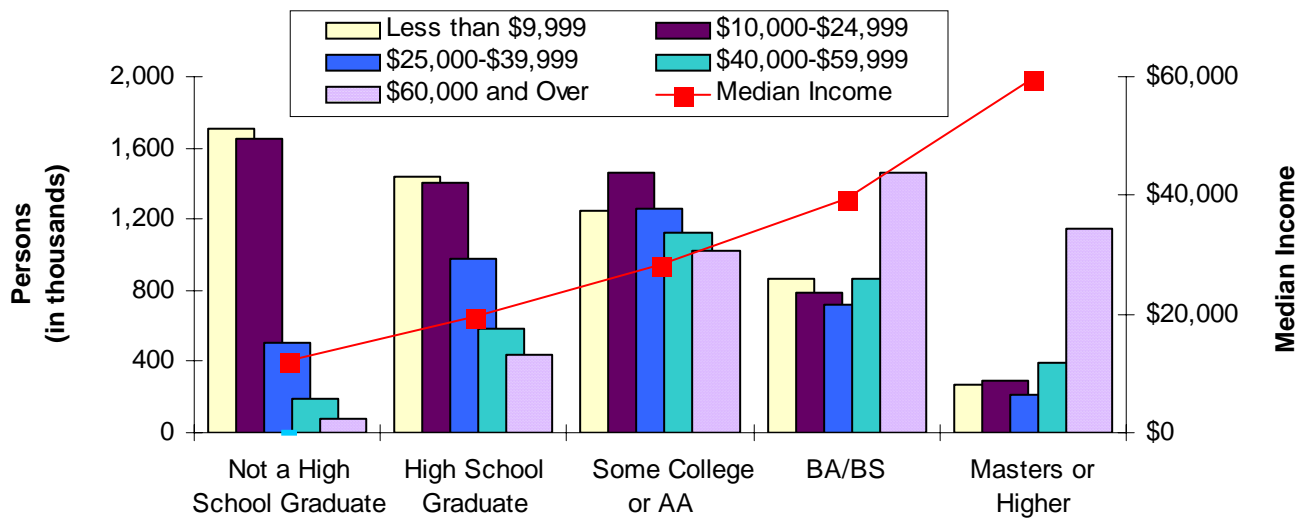


Table 38. Median Personal Income (2003) for Persons (25+) by Educational Attainment and Race/Ethnicity

Attainment	Median Personal Income				
	White	Hispanic	Asian	Black*	Total**
Not a High School Graduate	\$13,472	\$12,800	\$9,120	\$9,576	\$12,000
High School Graduate	\$20,800	\$18,825	\$15,045	\$20,000	\$19,708
Some College or AA	\$30,936	\$25,002	\$25,162	\$24,700	\$28,308
BA/BS	\$41,897	\$36,000	\$30,000	\$40,000	\$39,454
Master's or Higher	\$60,050	\$48,200	\$60,005	\$40,000	\$59,704
Total	\$31,290	\$17,000	\$22,706	\$23,744	\$24,466

* Patterns in income by educational attainment are the same for all races except Blacks. This may be attributed to smaller samples for Blacks than Non-Blacks.

** Total includes all race/ethnic groups.

Figure 24. Median Personal Income (2003) for Persons (25+) by Educational Attainment and Race/Ethnicity

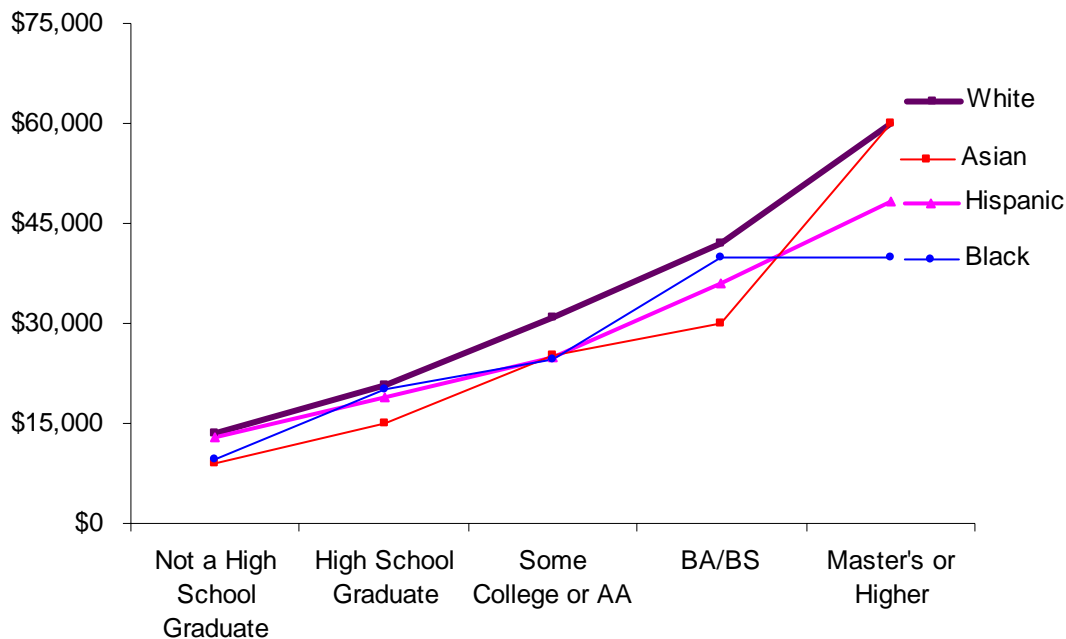
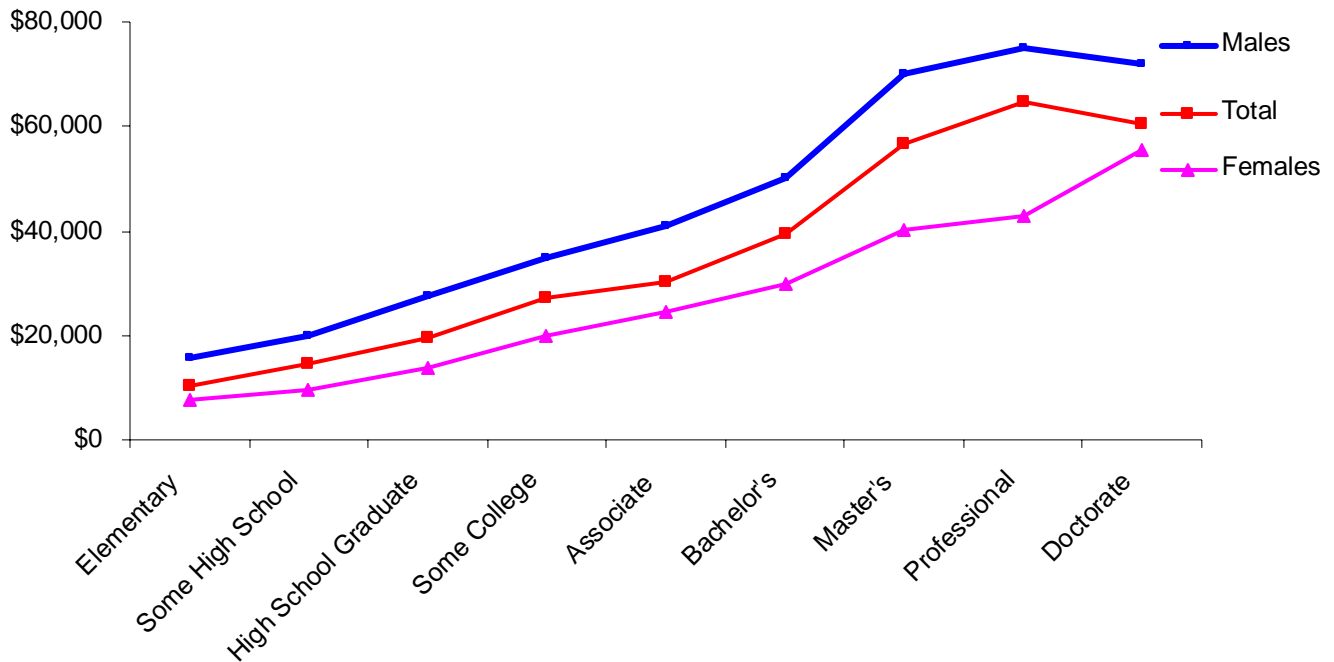


Table 39. Median Personal Income (2003) for Persons (25+) by Educational Attainment and Sex

Attainment	Median Personal Income		
	Males	Females	Total
Elementary	\$15,600	\$7,585	\$10,436
Some High School	\$19,900	\$9,720	\$14,444
High School Graduate	\$27,389	\$13,856	\$19,708
Some College	\$35,000	\$20,050	\$27,046
Associate	\$40,769	\$24,341	\$30,050
Bachelor's	\$50,146	\$30,000	\$39,454
Master's	\$70,000	\$40,070	\$56,544
Professional	\$75,000	\$43,000	\$64,749
Doctorate	\$72,116	\$55,442	\$60,525
Total	\$33,400	\$16,749	\$24,466

Figure 25. Median Personal Income (2003) for Persons (25+) by Educational Attainment and Sex



VI. Labor Force Characteristics

The estimated 2004 civilian labor force² was 17.3 million, approximately 65 percent of the civilians 16 years and older. Males accounted for slightly more than half (55 percent) of the estimated labor force and females 45 percent. In general, participation rates were higher for males than for females.

Statewide, the unemployment rate was estimated at 7.4 percent. Of the total 1.3 million unemployed persons, 57.8 percent were men and 42.2 percent women. Blacks had the highest unemployment rate (11.9 percent), followed by Hispanics (10.1 percent). Asians had the lowest (5.4 percent), followed by Whites (5.5 percent).

Of the estimated 16 million employed civilians 16 years and over, approximately one-fifth (19.4 percent) worked in the education and health services sector, 14.7 percent in the wholesale and retail trade, and 12.3 percent in the professional and business services. Professional and related careers accounted for the highest share of occupations (20.8 percent) followed by management, business, and financial occupations (15.7 percent). At the other end of the scale, farming, fishing, and forestry occupations accounted for less than one percent of the total employment. Management, business, and financial occupations had the highest median earning (\$69,005) whereas farming, fishing, and forestry occupations had the lowest (\$19,903).

The percentage of families with three or more employed civilians was 8.5; two employed civilians was 37.5; one employed civilian 36.5; and no employed civilian 17.4. Families with no employed civilian had the lowest median income (\$22,383) whereas families with three or more employed civilians had the highest (\$92,557).

Table 40. Persons (16+) by Age, Civilian Labor Force Participation, and Sex

Age Group	In Civilian Labor Force		Not in Labor Force		Civilian Labor Force Participation Rate	
	Males	Females	Males	Females	Males	Females
16-19	361,909	347,808	693,442	657,534	34.3%	34.6%
20-24	1,078,028	921,696	335,358	421,290	76.3%	68.6%
25-29	1,029,388	741,027	125,808	357,354	89.1%	67.5%
30-34	1,142,013	901,242	110,292	386,117	91.2%	70.0%
35-39	1,247,849	949,969	114,423	417,467	91.6%	69.5%
40-44	1,257,944	977,267	98,586	396,015	92.7%	71.2%
45-49	1,108,202	1,021,100	158,485	325,917	87.5%	75.8%
50-54	925,804	804,893	164,936	320,695	84.9%	71.5%
55-59	739,464	610,072	169,195	354,939	81.4%	63.2%
60-64	360,740	292,867	289,461	390,281	55.5%	42.9%
65-69	164,551	128,897	318,645	474,713	34.1%	21.4%
70 +	119,993	90,542	1,026,489	1,386,398	10.5%	6.1%
Total	9,535,886	7,787,380	3,605,120	5,888,719	72.6%	56.9%

² CPS defines the civilian labor force as all civilians in the non-institutional population age 16 and over classified as "Employed" or "Unemployed who are either looking for work or on layoff."

Figure 26. Persons (16+) by Age, Civilian Labor Force Participation Rate, and Sex

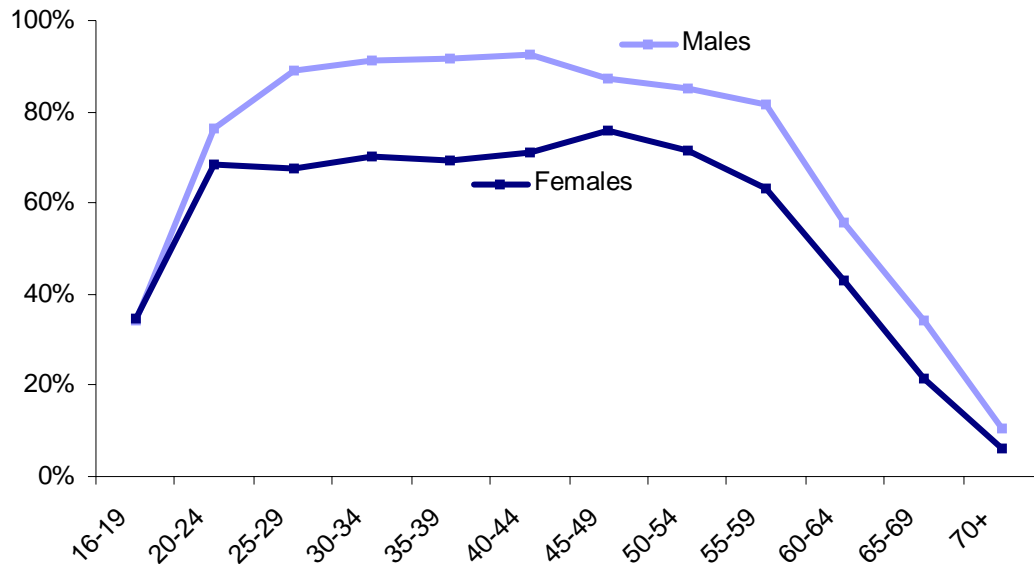


Table 41. Persons (16+) by Employment Status, Race/Ethnicity, and Sex

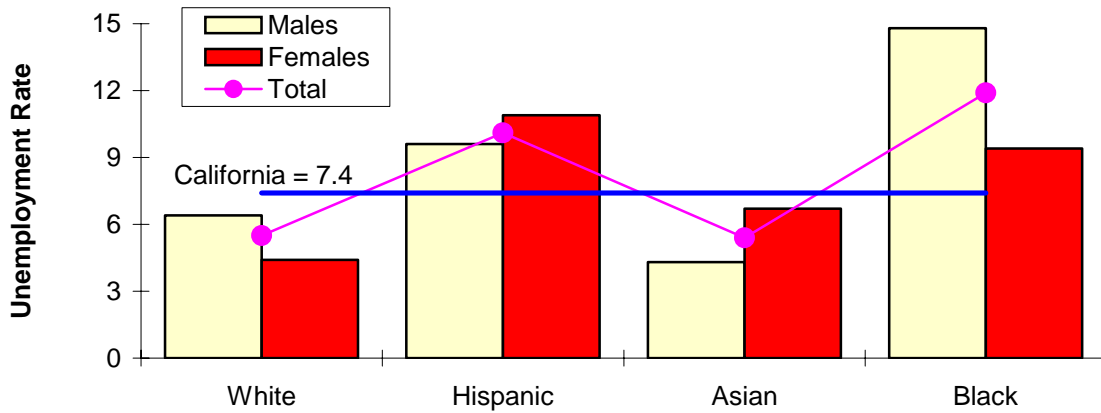
Civilian Labor Force	White			Hispanic			Asian		
	Males	Females	Total	Males	Females	Total	Males	Females	Total
Employed	4,324,405	3,734,131	8,058,536	2,862,480	1,951,784	4,814,264	1,025,253	911,786	1,937,039
Unemployed	293,256	173,353	466,609	303,916	238,201	542,117	46,221	65,361	111,582
Total	4,617,661	3,907,484	8,525,145	3,166,396	2,189,984	5,356,380	1,071,474	977,147	2,048,621
% Unemployed	6.4%	4.4%	5.5%	9.6%	10.9%	10.1%	4.3%	6.7%	5.4%

--- Table 41. Continued ---

Civilian Labor Force	Black			Total*		
	Males	Females	Total	Males	Females	Total
Employed	393,861	480,599	874,460	8,799,284	7,248,626	16,047,909
Unemployed	68,447	49,685	118,132	736,602	538,754	1,275,356
Total	462,308	530,284	992,592	9,535,886	7,787,380	17,323,265
% Unemployed	14.8%	9.4%	11.9%	7.7%	6.9%	7.4%

* Total includes all race/ethnic groups.

Figure 27. Unemployment Rate* by Race/Ethnicity, and Sex



* Civilian labor force only.

Table 42. Persons (16+, Employed*) by Major Industrial Group and 2003 Mean & Median Earnings

Major Industry Group	Employed		Earnings	
	Number	Percent	Mean	Median
Agriculture, Forestry, Fishing, and Hunting	209,704	1.3%	\$31,692	\$18,000
Construction	1,183,698	7.4%	\$37,487	\$28,000
Educational and Health Services	3,105,862	19.4%	\$39,479	\$31,000
Financial Activities	1,334,202	8.3%	\$56,738	\$35,000
Information	508,824	3.2%	\$58,811	\$43,000
Leisure and Hospitality	1,326,533	8.3%	\$23,459	\$16,000
Manufacturing	1,828,265	11.4%	\$47,496	\$35,000
Mining	19,327	0.1%	\$71,119	\$54,000
Other Services	818,752	5.1%	\$26,256	\$18,000
Professional and Business Services	1,969,914	12.3%	\$49,672	\$31,000
Public Administration	699,382	4.4%	\$54,258	\$49,000
Transportation and Utilities	691,010	4.3%	\$45,224	\$40,000
Wholesale and Retail Trade	2,352,436	14.7%	\$37,327	\$25,000
Total	16,047,909	100.0%	\$42,058	\$30,000

* Includes both full and part-time employees.

Table 43. Persons (16+, Employed*) by Major Occupational Group and 2003 Mean & Median Earnings

Major Occupation Group	Employed		Earnings	
	Number	Percent	Mean	Median
Construction and Extraction Occupations	918,145	5.7%	\$31,231	\$25,000
Farming, Fishing, and Forestry Occupations	135,488	0.8%	\$19,903	\$18,000
Installations, Maintenance, and Repair Occupations	520,865	3.2%	\$40,345	\$35,000
Management, Business, and Financial Occupations	2,524,016	15.7%	\$69,005	\$50,000
Office and Administrative Support Occupations	2,422,439	15.1%	\$28,802	\$25,000
Production Occupations	987,840	6.2%	\$29,528	\$24,000
Professional and Related Occupations	3,343,883	20.8%	\$55,176	\$45,000
Sales and Related Occupations	1,930,765	12.0%	\$43,198	\$25,006
Service Occupations	2,390,935	14.9%	\$22,484	\$16,000
Transportation and Material Moving Occupations	873,533	5.4%	\$31,801	\$25,000
Total	16,047,909	100.0%	\$42,058	\$30,000

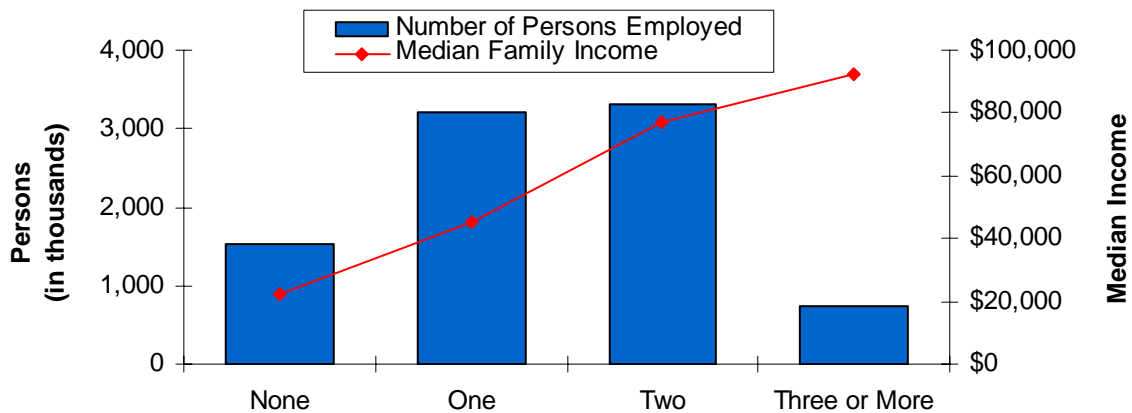
* Includes both full and part-time employees.

Table 44. Families by Number of Persons Employed* and Median Family Income (2003)

Number of Persons Employed	Families	Percent	Median Family Income
None	1,535,171	17.4%	\$22,383
One	3,215,544	36.5%	\$45,047
Two	3,300,621	37.5%	\$77,083
Three or More	749,590	8.5%	\$92,557
Total	8,800,927	100.0%	\$57,130

* Includes all civilians 15 years and over who were either "at work" or were "with a job but not at work".

Figure 28. Distribution of Families by Number of Persons Employed and Median Family Income (2003)



VII. Income

Data on income cover all sources of gross money incomes (excluding capital gains and losses) reported by persons age 15 and over in the previous calendar year. Over half of Californians 15 years and over (51.3 percent) had incomes below \$20,000 a year, 28.7 percent earned between \$20,000 and \$50,000, and only 20 percent earned \$50,000 or more. In general, men earned more than women. The proportion of women with incomes less than \$20,000 a year (60.6 percent) was significantly higher than that of men (41.8 percent). In contrast, only 12.4 percent of women earned \$50,000 or more a year, while 27.7 percent of men earned that much. Accordingly, the median income of women (\$13,415) was much lower than that of men (\$25,000).

Eight out of ten persons 65 years and older (83 percent) received Social Security income, while only 8.5 percent received Supplemental Security income. Although more women than men had Social Security and Supplemental Security incomes, men had relatively higher median Social Security and Supplemental Security income.

Among families, more than half (55.5 percent) had incomes \$50,000 or more a year, 28.7 percent earned \$20,000 to \$50,000 a year, and 15.9 percent earned less than \$20,000. Families with a White householder had the highest median income (\$71,474) while families with a Hispanic householder had the lowest (\$36,000). White and Asian families had median incomes higher than the State median; Black and Hispanic families had median incomes lower than the State median. Families of four persons had the highest median income (\$67,000) and families of two had the lowest (\$50,224).

Among households, 20.5 percent had incomes of less than \$20,000 per annum; 29.9 percent had incomes between \$20,000 and \$50,000; and 49.6 percent earned \$50,000 or more. In 2004, the majority of households had more than one source of income. However, wage and salary (75.8 percent), interest (52.9 percent), and dividend (23.6 percent) were the top three sources of income. The highest median household income (\$66,104) was recorded for households of four persons and for householders between the ages of 45 and 54.

Table 45. Persons (15+) by 2003 Personal Income and Sex

Personal Income:	Males	Females	Total
Less than \$10,000	3,410,180	5,777,805	9,187,985
\$10,000 - \$19,999	2,252,122	2,663,062	4,915,184
\$20,000 - \$29,999	1,673,932	1,607,611	3,281,543
\$30,000 - \$39,999	1,394,405	1,266,149	2,660,553
\$40,000 - \$49,999	1,066,729	884,583	1,951,313
\$50,000 - \$74,999	1,802,767	1,043,989	2,846,756
\$75,000 - \$99,999	848,733	341,595	1,190,327
\$100,000 and Over	1,097,350	349,190	1,446,540
Total	13,546,217	13,933,984	27,480,201
Mean	\$39,565	\$23,441	\$31,389
Median	\$25,000	\$13,415	\$18,720

Table 46. Persons (65+) by Sex and Receipt of Social Security and Supplemental Security Income

Source of Income (2003)	Males	Percent of Males 65+	Females	Percent of Females 65+	Total	Percent of Persons 65+
Social Security	1,340,913	82.3%	1,740,155	83.6%	3,081,068	83.0%
Supplemental Security	129,597	8.0%	187,297	9.0%	316,894	8.5%

Table 47. Persons (65+) by Selected Types of Income Received (2003) and Sex

Source of Income (2003)	Males		Females		Total	
	Mean	Median	Mean	Median	Mean	Median
Social Security	\$11,622	\$11,648	\$9,434	\$9,104	\$10,386	\$10,184
Supplemental Security	\$7,228	\$8,064	\$6,511	\$8,040	\$6,804	\$8,040
Total Personal Income	\$30,932	\$19,300	\$17,268	\$10,892	\$23,270	\$13,844

Table 48. Households by Household Income (2003) and Families by Family Income (2003) and Race/Ethnicity of Householder

Family Income	Number of Families					Number of Households
	White	Hispanic	Asian	Black	Total*	
Less than \$10,000	164,793	200,047	63,947	75,482	521,152	1,042,840
\$10,000 - \$19,999	296,820	388,951	102,169	69,184	874,709	1,561,336
\$20,000 - \$29,999	315,788	442,544	64,933	71,381	913,638	1,314,065
\$30,000 - \$39,999	326,372	377,601	83,295	51,517	845,019	1,288,013
\$40,000 - \$49,999	366,984	255,372	88,487	46,373	764,815	1,200,658
\$50,000 - \$74,999	833,087	443,508	213,978	89,177	1,603,335	2,212,236
\$75,000 - \$99,999	665,234	238,710	147,016	71,794	1,151,900	1,501,783
\$100,000 and Over	1,459,378	235,488	320,136	70,724	2,126,360	2,579,130
Total	4,428,456	2,582,221	1,083,961	545,632	8,800,927	12,700,062
Mean Income	\$90,245	\$48,937	\$76,889	\$54,478	\$73,838	\$66,915
Median Income	\$71,474	\$36,000	\$67,064	\$40,000	\$57,130	\$49,320

* Total includes all race/ethnic groups.

Figure 29. Families by Race/Ethnicity of Householder and Median Family Income (2003)

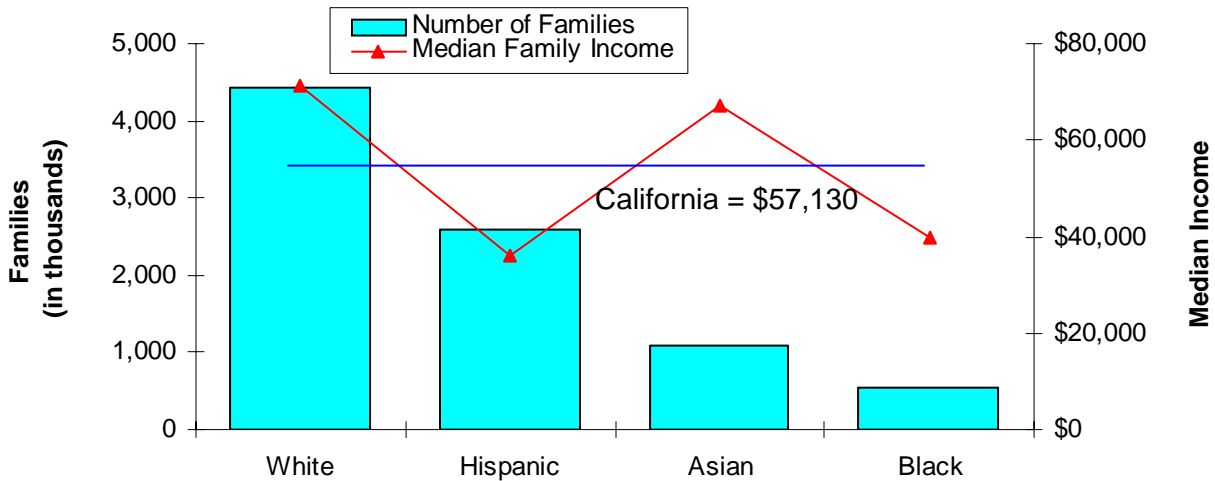


Table 49. Households by Age of Householder and Mean and Median Household Income (2003)

Age of Householder	Households		Household Income	
	Number	Percent	Mean	Median
Less than 35	2,979,331	23.5%	\$59,608	\$44,400
35-44	2,866,192	22.6%	\$76,496	\$58,006
45-54	2,691,087	21.2%	\$83,478	\$66,104
55-64	1,815,304	14.3%	\$74,776	\$60,364
65 +	2,348,148	18.5%	\$39,431	\$24,491
Total	12,700,062	100.0%	\$66,915	\$49,320

Figure 30. Median Household Income (2003) by Age of Householder

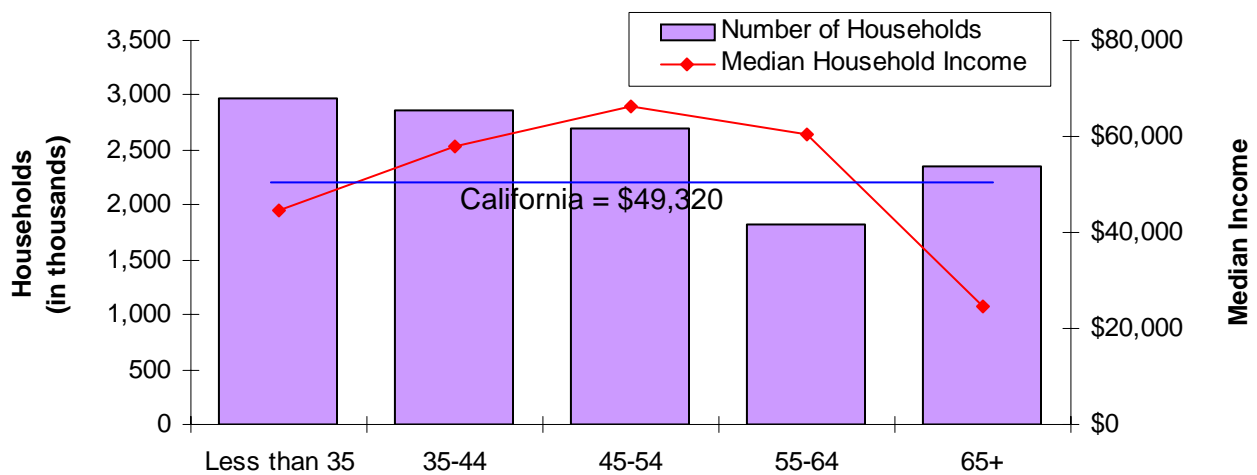


Table 50. Households by Size of Household and Mean and Median Household Income (2003)

	3,066,256	24.1%	\$40,636	\$28,000
	3,840,893	30.2%	\$71,690	\$54,090
	2,066,887	16.3%	\$75,111	\$60,364
	1,937,829	15.3%	\$84,383	\$66,104
	1,062,045	8.4%	\$73,536	\$57,000
	726,152	5.7%	\$72,993	\$59,000
	12,700,062	100.0%	\$66,915	\$49,320

Table 51. Families by Size of Family and Mean and Median Family Income (2003)

Family Size	Families		Family Income	
	Number	Percent	Mean	Median
2	3,452,419	39.2%	\$68,197	\$50,224
3	1,872,894	21.3%	\$74,615	\$60,000
4	1,851,554	21.0%	\$84,838	\$67,000
5	977,493	11.1%	\$72,595	\$56,048
6	646,566	7.3%	\$72,081	\$58,000
All Families	8,800,927	100.0%	\$73,838	\$57,130

Table 52. Households by Selected Types of 2003 Household Income Source

Number of Households with Persons Who Received Income from	Households	Percent of all Households	Income Received	
			Mean	Median
Wages and Salary	9,626,887	75.8%	\$67,145	\$51,200
Farm and Non-Farm Self-Employment*	1,619,043	12.7%	\$37,454	\$20,000
Unemployment Compensation	1,120,699	8.8%	\$4,406	\$3,198
Workers' Compensation	272,642	2.1%	\$10,046	\$8,160
Social Security	2,962,261	23.3%	\$13,482	\$12,192
Supplemental Security Income (SSI)	646,521	5.1%	\$7,860	\$7,800
Veterans' Payments	174,696	1.4%	\$9,416	\$6,599
Disability Benefits	217,601	1.7%	\$11,363	\$9,600
Retirement or Pension Income	1,320,980	10.4%	\$20,387	\$13,810
Interest	6,716,882	52.9%	\$2,580	\$243
Dividends	3,001,305	23.6%	\$3,796	\$500
Rental or Property Income*	1,106,883	8.7%	\$9,268	\$2,000
Child Support Payments	436,726	3.4%	\$5,554	\$4,500
Alimony Payments	48,321	0.4%	\$9,936	\$5,000

* Self-employment and rental income can be positive or negative.

VIII. Poverty

There were 4.7 million Californians living below the poverty level in 2004, representing 13.3 percent of the State's population. Blacks, who made up 6.2 percent of Californians, experienced the highest rates of poverty (21.9 percent) while Whites, who had the largest share of the State's population (46.6 percent), had the lowest rate (7.5 percent). Hispanics, the second largest group (32.9 percent), had the second highest poverty rate (20.5 percent); Asians, representing 11.6 percent of Californians, had 11 percent of their population living below poverty. Women accounted for 52.2 percent of persons below poverty. Children under 18, who comprised 27 percent of the State's population, made up 39 percent of all persons below poverty.

Of the 8.8 million families in California, a total of 969,243 families (11 percent) had incomes below the poverty level. Half of the families living below the poverty level (50.7 percent) were married-couple families; 40.2 percent were female householders with no spouse present; and 9.1 percent were male householders with no spouse present. Among families with children, the proportion living below poverty was highest (30.5 percent) for female householders with no spouse present and lowest (9.4 percent) for married couples (see Table 57). Similarly, among families with no children, female householders with no spouse present had the highest rate, at 10.9 percent. Overall, families with no children had much lower poverty rates for each family type.

Table 53. Persons by Race/Ethnicity and Poverty Level Status*

	1,231,914	2,236,157	13,016,141	7.5%
	2,395,584	3,462,590	5,803,584	20.5%
	451,765	682,428	2,965,245	11.0%
	479,547	455,481	1,257,451	21.9%
	4,719,001	6,984,153	23,690,908	13.3%

* Poverty status is determined for all persons except institutionalized persons, persons in military group quarters and in college dormitories, and unrelated individuals under 15 years old. Poverty status is designated for the current year, 2004, but is calculated on the previous year's income, 2003.

** Total includes all race/ethnic groups.

Figure 31. Percentage of Persons by Poverty Status and Race/Ethnicity

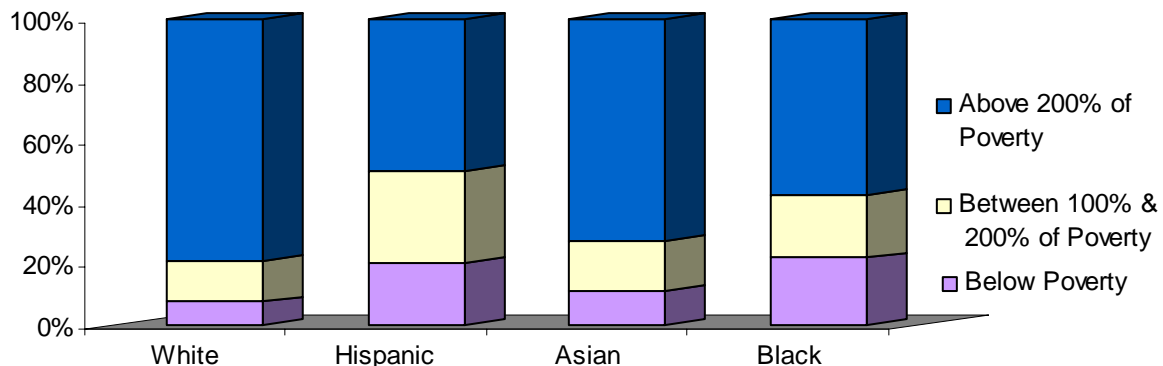


Table 54. Persons Below the Poverty Level (2003) by Age and Sex

Age Group	Males	Percent of Age	Females	Percent of Age	Total	Percent of Age
0-4	248,232	19.7%	243,753	19.6%	491,985	19.6%
5-17	729,955	20.1%	620,809	18.1%	1,350,764	19.1%
18-34	576,176	13.1%	716,423	17.1%	1,292,599	15.1%
35-49	369,852	9.2%	449,646	11.0%	819,498	10.1%
50-64	221,084	8.3%	227,421	8.2%	448,505	8.3%
65 +	112,497	6.9%	203,153	9.8%	315,650	8.5%
Total	2,257,797	12.8%	2,461,204	13.8%	4,719,001	13.3%

Figure 32. Percentage of Persons Below the Poverty Level (2003) by Age and Sex

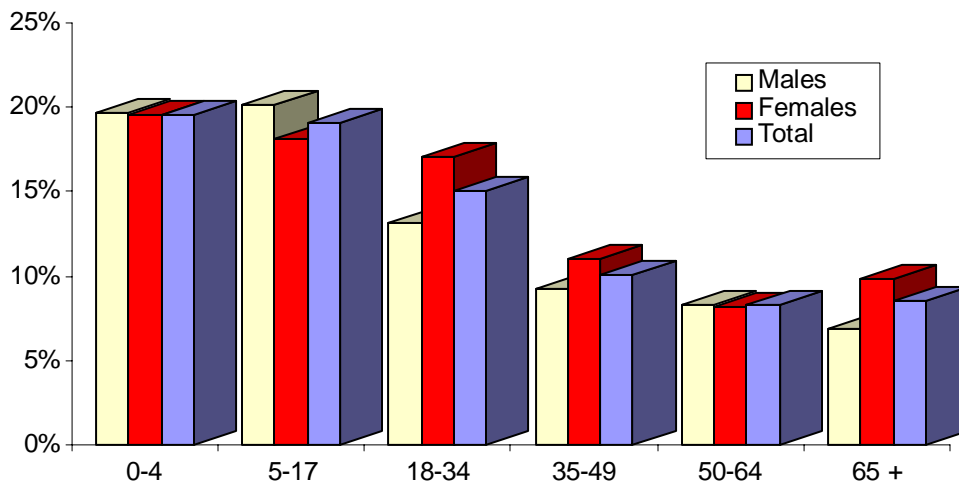


Table 55. Persons Below the Poverty Level (2003) by Race/Ethnicity and Age

Race/Ethnicity	0-17	Percent of Age	18-64	Percent of Age	65 +	Percent of Age	Total	Percent of Age
White	288,514	8.5%	782,158	7.4%	161,242	6.5%	1,231,914	7.5%
Hispanic	1,182,055	28.2%	1,157,656	16.7%	55,874	10.6%	2,395,584	20.5%
Asian	86,428	9.3%	304,163	11.3%	61,174	12.8%	451,765	11.0%
Black	217,600	32.0%	231,994	17.5%	29,954	16.1%	479,547	21.9%
Total*	1,842,748	19.3%	2,560,602	11.6%	315,650	8.5%	4,719,001	13.3%

* Total includes all race/ethnic groups.

Figure 33. Percentage of Persons Below the Poverty Level (2003) by Age and Race/Ethnicity

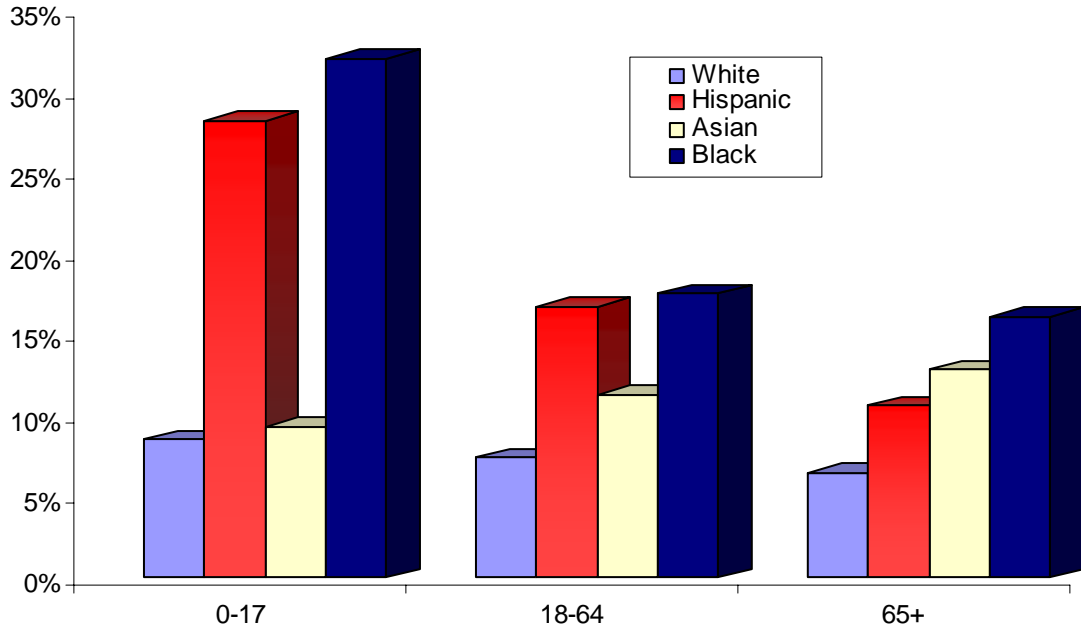


Table 56. Families by Poverty Status, Presence of Children*, and Family Type

Poverty Status		Total Families		Married-Couple Families		Other Families			
						Male Householder, No Wife Present		Female Householder, No Husband Present	
		Number	Percent	Number	Percent	Number	Percent	Number	Percent
Below Poverty	With Children	730,230	8.3%	328,681	5.0%	61,858	9.3%	339,692	21.6%
	W/O Children	239,013	2.7%	162,472	2.5%	26,198	3.9%	50,343	3.2%
	Total	969,243	11.0%	491,153	7.5%	88,056	13.2%	390,035	24.8%
Between 100 and 149% of Poverty	With Children	567,582	6.4%	348,703	5.3%	38,803	5.8%	180,076	11.4%
	W/O Children	237,079	2.7%	173,926	2.7%	21,867	3.3%	41,285	2.6%
150% and Above of Poverty	With Children	3,650,482	41.5%	2,828,287	43.1%	228,445	34.3%	593,750	37.7%
	W/O Children	3,376,541	38.4%	2,717,849	41.4%	289,360	43.4%	369,332	23.5%
Total	With Children	4,948,294	56.2%	3,505,670	53.4%	329,106	49.4%	1,113,518	70.7%
	W/O Children	3,852,633	43.8%	3,054,247	46.6%	337,425	50.6%	460,961	29.3%
	Total	8,800,927	100.0%	6,559,917	100.0%	666,531	100.0%	1,574,479	100.0%

* Includes children related to the householder.

Table 57. Families with Children* by Poverty Status and Family Type

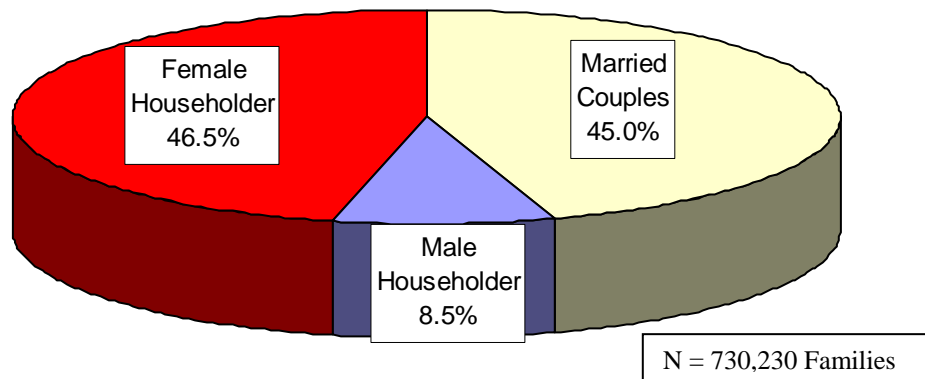
Poverty Status	Total Families		Married-Couple Families		Other Families			
					Male Householder, No Wife Present		Female Householder, No Husband Present	
	Number	Percent	Number	Percent	Number	Percent	Number	Percent
Below Poverty	730,230	14.8%	328,681	9.4%	61,858	18.8%	339,692	30.5%
Between 100% and 149% of Poverty	567,582	11.5%	348,703	9.9%	38,803	11.8%	180,076	16.2%
150% and Above of Poverty	3,650,482	73.8%	2,828,287	80.7%	228,445	69.4%	593,750	53.3%
Total	4,948,294	100.0%	3,505,670	100.0%	329,106	100.0%	1,113,518	100.0%

* Includes children related to the householder.

Table 58. Families with No Children by Poverty Status and Family Type

Poverty Status	Total Families		Married-Couple Families		Other Families			
					Male Householder, No Wife Present		Female Householder, No Husband Present	
	Number	Percent	Number	Percent	Number	Percent	Number	Percent
Below Poverty	239,013	6.2%	162,472	5.3%	26,198	7.8%	50,343	10.9%
Between 100% and 149% of Poverty	237,079	6.2%	173,926	5.7%	21,867	6.5%	41,285	9.0%
150% and Above of Poverty	3,376,541	87.6%	2,717,849	89.0%	289,360	85.8%	369,332	80.1%
Total	3,852,633	100.0%	3,054,247	100.0%	337,425	100.0%	460,961	100.0%

Figure 34. Distribution of Families with Children Living Below Poverty by Family Type



**Appendix A. Standard Errors (SE) and Confidence Intervals (CI) for Selected Characteristics
for which 'a' and 'b' Parameters are Provided**

I. GENERAL CHARACTERISTICS	Estimate	a	b	f-Factor	Adjusted		SE	CI at 90%		SE*90%CL (SE*1.645)	Error (%)
					a	b		Lower	Upper		
CA											
Race/Ethnicity (All persons)											
Total Persons	35,394,062	-0.000011	3,222	1.63	-0.00015	5,252	22,730	35,356,670	35,431,454	37,392	0.11%
White	16,484,212	-0.000011	3,222	1.63	-0.00015	5,252	214,693	16,131,041	16,837,383	353,171	2.14%
Hispanic	11,661,759	-0.000139	5,617	1.63	-0.00026	9,156	267,307	11,222,039	12,101,479	439,720	3.77%
Asian	4,099,438	-0.000285	5,617	1.63	-0.00026	9,156	182,123	3,799,845	4,399,031	299,593	7.31%
Black	2,192,479	-0.000101	5,617	1.63	-0.00026	9,156	137,205	1,966,776	2,418,182	225,703	10.29%
Hawaiian/Pacific Islander	251,945	-0.000285	5,617	1.63	-0.00026	9,156	47,857	173,221	330,669	78,724	31.25%
American Indian & Alaskan Native	130,034	-0.000285	5,617	1.63	-0.00026	9,156	34,441	73,379	186,689	56,655	43.57%
Two or More Races	574,195	-0.000285	5,617	1.63	-0.00026	9,156	71,913	455,897	692,493	118,298	20.60%
Marital Status (Persons 15 years and over)											
Total	27,480,201	-0.000011	3,222	1.63	-0.00015	5,252	178,398	27,186,737	27,773,665	293,464	1.07%
Never Married	8,920,525	-0.000011	3,222	1.63	-0.00015	5,252	187,069	8,612,796	9,228,254	307,729	3.45%
Married	14,212,222	-0.000011	3,222	1.63	-0.00015	5,252	211,070	13,865,012	14,559,432	347,210	2.44%
Separated	566,652	-0.000011	3,222	1.63	-0.00015	5,252	54,112	477,637	655,667	89,015	15.71%
Widowed	1,392,866	-0.000011	3,222	1.63	-0.00015	5,252	83,822	1,254,979	1,530,753	137,887	9.90%
Divorced	2,387,935	-0.000011	3,222	1.63	-0.00015	5,252	108,128	2,210,065	2,565,805	177,870	7.45%
Children in Family (Persons less than 18 years old)											
Living with both parents	6,688,922	-0.000009	2,652	1.63	-0.00012	4,323	153,064	6,437,132	6,940,712	251,790	3.76%
Living with father only	430,104	-0.000009	2,652	1.63	-0.00012	4,323	42,855	359,607	500,601	70,497	16.39%
Living with mother only	2,078,421	-0.000009	2,652	1.63	-0.00012	4,323	91,950	1,927,163	2,229,679	151,258	7.28%
Neither/Unknown	365,922	-0.000009	2,652	1.63	-0.00012	4,323	39,565	300,838	431,006	65,084	17.79%

Housing Tenure (All households)	Estimate	a	b	CA	Adjusted		SE	CI at 90%		SE*90%CL (SE*1.645)	Error (%)
				f-Factor	a	b		Lower	Upper		
Total											
Owner Occupied	7,523,426	-0.000004	1,052	1.63	-0.00005	1,715	100,736	7,357,715	7,689,137	165,711	2.20%
Renter Occupied	5,176,636	-0.000004	1,052	1.63	-0.00005	1,715	87,025	5,033,481	5,319,791	143,155	2.77%
Household Type (All households)											
One person household – Male	1,328,199	-0.000004	1,052	1.63	-0.00005	1,715	46,816	1,251,187	1,405,211	77,012	5.80%
Female	1,738,056	-0.000004	1,052	1.63	-0.00005	1,715	53,230	1,650,493	1,825,619	87,563	5.04%
2+ Persons Related	8,800,927	-0.000004	1,052	1.63	-0.00005	1,715	106,414	8,625,875	8,975,979	175,052	1.99%
Married Couple – w/Children	3,505,670	-0.000004	1,052	1.63	-0.00005	1,715	73,577	3,384,635	3,626,705	121,035	3.45%
w/o Children	3,054,247	-0.000004	1,052	1.63	-0.00005	1,715	69,163	2,940,473	3,168,021	113,774	3.73%
Female Headed* – w/Children	1,113,518	-0.000004	1,052	1.63	-0.00005	1,715	43,001	1,042,781	1,184,255	70,737	6.35%
w/o Children	460,961	-0.000004	1,052	1.63	-0.00005	1,715	27,930	415,016	506,906	45,945	9.97%
Male Headed* – w/Children	329,106	-0.000004	1,052	1.63	-0.00005	1,715	23,645	290,211	368,001	38,895	11.82%
w/o Children	337,425	-0.000004	1,052	1.63	-0.00005	1,715	23,939	298,046	376,804	39,379	11.67%
2+ Persons Unrelated	832,880	-0.000004	1,052	1.63	-0.00005	1,715	37,342	771,452	894,308	61,428	7.38%
II. HEALTH AND INSURANCE (All persons)											
Covered	28,894,777	-0.000009	2,652	1.63	-0.00012	4,323	150,107	28,647,851	29,141,703	246,926	0.85%
Not covered	6,499,285	-0.000009	2,652	1.63	-0.00012	4,323	151,379	6,250,267	6,748,303	249,018	3.83%
III. MOBILITY (Persons 1 year and over)											
Abroad (to CA)	286,078	-0.000014	3,965	1.63	-0.00018	6,463	42,824	215,632	356,524	70,446	24.62%
Different State	442,246	-0.000014	3,965	1.63	-0.00018	6,463	53,126	354,854	529,638	87,392	19.76%
Same State, Different County	1,321,974	-0.000014	3,965	1.63	-0.00018	6,463	90,683	1,172,800	1,471,148	149,174	11.28%
Same County	3,202,492	-0.000014	3,965	1.63	-0.00018	6,463	137,177	2,976,837	3,428,147	225,655	7.05%

* with no spouse present

IV. FOREIGN BORN* (All persons)	Estimate	a	b	CA f-Factor	Adjusted		SE	CI at 90%		SE*90%CL (SE*1.645)	Error (%)
					a	b		Lower	Upper		
					Total	9,541,214		-0.0000143	4,189		
Naturalized	3,735,458	-0.0000143	4,189	1.63	-0.00019	6,827	151,001	3,487,062	3,983,854	248,396	6.65%
Noncitizen	5,805,756	-0.0000143	4,189	1.63	-0.00019	6,827	181,963	5,506,426	6,105,086	299,330	5.16%
V. EDUCATIONAL ATTAINMENT (Persons 25 years and over)											
Educational Attainment by Race											
Total**	22,095,735	-0.000005	1,206	1.63	-0.00006	1,966	127,327	21,886,282	22,305,188	209,453	0.95%
White	11,568,063	-0.000005	1,206	1.63	-0.00006	1,966	123,606	11,364,731	11,771,395	203,332	1.76%
Hispanic	6,039,209	-0.000029	922	1.63	-0.00004	1,503	86,726	5,896,545	6,181,873	142,664	2.36%
Asian	2,737,834	-0.000083	1,364	1.63	-0.00006	2,223	74,929	2,614,576	2,861,092	123,258	4.50%
Black	1,275,231	-0.000029	1,364	1.63	-0.00006	2,223	52,275	1,189,238	1,361,224	85,993	6.74%
Educational Attainment by Nativity											
Foreign Born (Total)**	7,825,832	-0.0000065	1,568	1.63	-0.00007	2,556	124,738	7,620,638	8,031,026	205,194	2.62%
Not a High School Graduate	2,975,758	-0.0000065	1,568	1.63	-0.00007	2,556	83,443	2,838,495	3,113,021	137,263	4.61%
High School Graduate	1,578,355	-0.0000065	1,568	1.63	-0.00007	2,556	62,072	1,476,247	1,680,463	102,108	6.47%
Some College or AA	1,254,788	-0.0000065	1,568	1.63	-0.00007	2,556	55,610	1,163,309	1,346,267	91,479	7.29%
BA/BS	1,335,421	-0.0000065	1,568	1.63	-0.00007	2,556	57,301	1,241,161	1,429,681	94,260	7.06%
Master's or Higher	681,511	-0.0000065	1,568	1.63	-0.00007	2,556	41,327	613,528	749,494	67,983	9.98%
Native (Total)	14,269,903	-0.000005	1,206	1.63	-0.00006	1,966	129,217	14,057,340	14,482,466	212,563	1.49%
Not a High School Graduate	1,163,352	-0.000005	1,206	1.63	-0.00006	1,966	47,026	1,085,994	1,240,710	77,358	6.65%
High School Graduate	3,263,648	-0.000005	1,206	1.63	-0.00006	1,966	76,300	3,138,134	3,389,162	125,514	3.85%
Some College or AA	4,860,437	-0.000005	1,206	1.63	-0.00006	1,966	90,760	4,711,138	5,009,736	149,299	3.07%
BA/BS	3,351,067	-0.000005	1,206	1.63	-0.00006	1,966	77,209	3,224,057	3,478,077	127,010	3.79%
Master's or Higher	1,631,398	-0.000005	1,206	1.63	-0.00006	1,966	55,304	1,540,422	1,722,374	90,976	5.58%

* For foreign born and noncitizen 'a' and 'b' parameters are multiplied by 1.3.

** Total includes all races/ethnic groups

VI. LABOR FORCE	Estimate	a	b	CA f-Factor	Adjusted		SE	CI at 90%		SE*90%CL (SE*1.645)	Error (%)
					a	b		Lower	Upper		
Persons in Labor Force (Civilian 16 years and over)											
Total	17,323,266	-0.000008	1,586	1.63	-0.00007	2,585	150,924	17,074,996	17,571,536	248,270	1.43%
Male	9,535,886	-0.000035	2,927	1.63	-0.00014	4,771	182,181	9,236,199	9,835,573	299,687	3.14%
Female	7,787,380	-0.000033	2,693	1.63	-0.00012	4,390	163,195	7,518,924	8,055,836	268,456	3.45%
Persons Employed (Employed civilians 16 years and over)											
Total*	16,047,909	-0.000008	1,586	1.63	-0.00007	2,585	150,339	15,800,601	16,295,217	247,308	1.54%
White	8,058,536	-0.000008	1,586	1.63	-0.00007	2,585	126,771	7,849,998	8,267,074	208,538	2.59%
Hispanic	4,814,264	-0.000187	3,296	1.63	-0.00015	5,372	149,441	4,568,434	5,060,094	245,830	5.11%
Asian	1,937,039	-0.000272	2,749	1.63	-0.00013	4,481	90,569	1,788,053	2,086,025	148,986	7.69%
Black	874,460	-0.000154	3,296	1.63	-0.00015	5,372	67,687	763,115	985,805	111,345	12.73%
VII. INCOME											
Personal Income (Persons 15 and over)											
Total	27,480,201	-0.000005	1,249	1.63	-0.00006	2,036	111,073	27,297,486	27,662,916	182,715	0.66%
Family Income (All families)											
Total*	8,800,927	-0.000005	1,140	1.63	-0.00005	1,858	110,776	8,618,701	8,983,153	182,226	2.07%
White	4,428,456	-0.000005	1,140	1.63	-0.00005	1,858	84,825	4,288,919	4,567,993	139,537	3.15%
Hispanic	2,582,221	-0.000039	1,245	1.63	-0.00006	2,029	69,688	2,467,584	2,696,858	114,637	4.44%
Asian	1,083,961	-0.000076	1,245	1.63	-0.00006	2,029	46,175	1,008,004	1,159,918	75,957	7.01%
Black	545,632	-0.000027	1,245	1.63	-0.00006	2,029	33,017	491,319	599,945	54,313	9.95%
Household Income (All households)											
Total	12,700,062	-0.000005	1,140	1.63	-0.00005	1,858	122,873	12,497,935	12,902,189	202,127	1.59%

* Total includes all races/ethnic groups

VIII. POVERTY STATUS	Estimate	a	b	CA f-Factor	Adjusted		SE	CI at 90%		SE*90%CL (SE*1.645)	Error (%)
					a	b		Lower	Upper		
Persons											
(Persons 15 years and over)											
Below Poverty*	4,719,001	-0.000019	5,282	1.63	-0.00024	8,610	187,592	4,410,413	5,027,589	308,588	6.54%
White	1,231,914	-0.000019	5,282	1.63	-0.00024	8,610	101,172	1,065,486	1,398,342	166,428	13.51%
Hispanic	2,395,584	-0.000141	5,282	1.63	-0.00024	8,610	138,649	2,167,506	2,623,662	228,078	9.52%
Asian	451,765	-0.000093	5,282	1.63	-0.00024	8,610	61,965	349,832	553,698	101,933	22.56%
Black	479,547	-0.000147	5,282	1.63	-0.00024	8,610	63,817	374,568	584,526	104,979	21.89%
Families											
(All families)											
Total Families	8,800,927	0.000052	1,243	1.63	0.00008	2,026	156,194	8,543,987	9,057,867	256,940	2.92%
Below Poverty	969,243	0.000052	1,243	1.63	0.00008	2,026	45,204	894,882	1,043,604	74,361	7.67%
Families with Children	730,230	0.000052	1,243	1.63	0.00008	2,026	39,048	665,997	794,463	64,233	8.80%
Families without Children	239,013	0.000052	1,243	1.63	0.00008	2,026	22,116	202,633	275,393	36,380	15.22%
Between 100 to 150% of Poverty	804,661	0.000052	1,243	1.63	0.00008	2,026	41,051	737,132	872,190	67,529	8.39%
Families with Children	567,582	0.000052	1,243	1.63	0.00008	2,026	34,311	511,140	624,024	56,442	9.94%
Families without Children	237,079	0.000052	1,243	1.63	0.00008	2,026	22,025	200,848	273,310	36,231	15.28%
Above 150% of Poverty	7,027,023	0.000052	1,243	1.63	0.00008	2,026	135,730	6,803,746	7,250,300	223,277	3.18%
Families with Children	3,650,482	0.000052	1,243	1.63	0.00008	2,026	92,335	3,498,591	3,802,373	151,891	4.16%
Families without Children	3,376,541	0.000052	1,243	1.63	0.00008	2,026	88,360	3,231,188	3,521,894	145,353	4.30%

* Total includes all races/ethnic groups

STANDARD ERROR OF RATES	Base Estimates	Rate	b	CA f-Factor	Adjusted b	SE	CI at 90%		SE*90%CL (SE*1.645)	Error (%)
							Lower	Upper		
Unemployment Rate (percentages)										
White	8,525,145	5.5	3,005	1.63	4,898	0.55	4.60	6.40	0.899	16.34%
Hispanic	5,356,380	10.1	3,296	1.63	5,372	0.95	8.53	11.67	1.570	15.54%
Asian	2,048,621	5.4	2,749	1.63	4,481	1.06	3.66	7.14	1.739	32.20%
Black	992,592	11.9	3,296	1.63	5,372	2.38	7.98	15.82	3.919	32.93%
Educational Attainment Rate										
Reporting a High School Diploma or Higher	22,095,735	81.3	1,206	1.63	1,966	0.37	80.70	81.90	0.605	0.74%
Reporting a BA/BS Degree or Higher	22,095,735	31.7	1,206	1.63	1,966	0.44	30.98	32.42	0.722	2.28%
Poverty Rate										
Total Below Poverty	35,394,062	13.3	5,282	1.63	8,610	0.53	12.43	14.17	0.871	6.55%
Men	17,586,162	12.8	5,282	1.63	8,610	0.74	11.58	14.02	1.216	9.50%
Women	17,807,900	13.8	5,282	1.63	8,610	0.76	12.55	15.05	1.248	9.04%

Appendix B: Major Changes in the Current Population Survey Since 1985

2003: In addition to the name change from Annual Demographic to Annual Social and Economic Supplement, modifications to existing CPS variables were made and new variables introduced. In 2003, persons were able to report more than one race. As a result, the old race variables were replaced with the new ones. Again beginning this year, CPS began using the North American Industry Classification System (NAICS) based on the Census 2000 industry and occupation codes. The new classification system affected all industry and occupation variables.

2002: The 2002 CPS Annual Demographic File (ADF) contains the expanded sample of state estimates of children's health insurance coverage that was implemented in 2001. The expanded sample accounts for the addition of about 34,500 households nationwide and 1,231 households for California in 2002. The 2002 ADF also used weights based on Census 2000 population controls, instead of 1990 population controls used in previous years. Using 2000 based weights affects weighted frequencies, which are noticeable when comparing 2002 to earlier years.

2001: The Census Bureau expanded the sample size to improve state estimates of children's health insurance coverage in the winter of 2001-02. This data was released in autumn of 2002. The original September 2001 sample file was revised due to a weight adjustment.* This report contains only data from the original revised sample file released December 2001.

1996: The sample size taken in Los Angeles County was significantly reduced. The March survey for the first time contained a question on self-reported health status of the respondents.

1994: The independent national population controls used for age, sex, race, and Hispanic origin were prepared by projecting forward the population as enumerated in the 1990 decennial census adjusted for the 1990 census undercount. Most estimates in the profile were affected by these changes.

1990: The sample reduction from 1989 was restored.

1989: The sample size for California was reduced by approximately 38 percent.

1985: Controls for the Hispanic population were introduced for the first time. These controls included an estimate of illegal immigrants.

*More information on the source and accuracy of the 2004 survey file can be obtained at <http://www.census.gov/apsd/techdoc/cps/cpsmar04.pdf>

**Appendix C: Sample Size of California Portion of the March Supplement
to the Current Population Survey, 1987-2004**

<i>Year</i>	<i>Households</i>	<i>Persons</i>
1987	4,739	13,349
1988	4,790	13,540
1989	2,949	7,997
1990	4,945	14,437
1991	5,011	14,894
1992	5,018	14,846
1993	4,923	14,732
1994	4,639	14,018
1995	4,590	13,579
1996	4,377	12,904
1997	4,496	13,113
1998	4,465	13,188
1999	4,525	13,214
2000	4,453	13,325
2001	4,338	12,966
2002	5,569	16,857
2003	5,600	16,779
2004	5,389	16,269